

216TH STREET INTERCHANGE AND HIGHWAY 1 IMPROVEMENT PROJECT



Ministry of
Transportation
and Infrastructure

PROJECT UPDATE MARCH 2020



Highway 1 facing eastbound traffic

Construction Update

Since the previous update in July 2019, the Ministry of Transportation and Infrastructure has made substantial progress on the project and advanced several key activities. Work continues on construction of the interchange bridge deck, the interchange entry/exit ramps, highway lane widening and sound walls.

This is the fifth project update for the 216th Street Interchange and Highway 1 Improvement Project.

Activity Update

- Bridge deck concrete poured in November.
- Interchange entry/exit ramps are fully-formed and ready to support further construction. Removal of pre-load material is substantially complete.
- Completed sections of bottom lift layer of paving on 216th Street north and south sides.
- Guy Creek culvert installation substantially complete.
- Yorkson Creek culvert installation substantially complete.
- Concrete sound wall on the north side of Highway 1, from west side of 216th Street to 208th Street, is substantially complete.
- Wood sound wall on the south side of Highway 1, from east of 212th Street to 216th Street eastbound exit ramp, is complete.



5 m concrete sound wall on north side of Highway 1



Installing 3 m wood sound wall on south side of Highway 1

Environmental Upgrades at Yorkson Creek and Guy Creek

As part of the environmental enhancements for the Project, new culverts were installed to improve fish passage at Guy Creek (located at the east end of the project limits) and Yorkson Creek (located at the west end of the project limits). Additional enhancements will include planting native vegetation along the stream banks, which will be monitored for a 5-year period to ensure plant survivorship.

Construction of the new culverts has been a three-stage process that required shifting travel lanes on Highway 1. The creek flows were maintained in the original culverts while the new culverts were being installed adjacent to the stream beds. When Guy Creek culvert was completed, the stream was diverted to the new culvert during the fish window – the time of year that in-stream work can be carried out. Yorkson Creek will be diverted later this year and the original culverts for both creeks will be retained to provide wildlife passage.

Yorkson Creek is home to Chum, Rainbow, Coho and Sockeye salmon. In Guy Creek, Coho salmon and Cutthroat trout can be found. Small mammals (i.e. squirrels, skunks, raccoons), amphibians and reptiles can now access important habitats on both sides of the highway. Below are images taken throughout the installation process at Yorkson Creek, and the completed south side culvert at Guy Creek.



Pouring concrete bridge deck



Paving on north side of 216th Street



Facing Highway 1 traffic from eastbound exit ramp

What You Can Expect

- Please be advised that nighttime construction activities may take place as the project progresses.
- Highway lanes will continue to be shifted north and south within the project limits to facilitate work on the shoulder or median. Please obey all signs, temporary lane markings and barriers, and drive with caution.
- Two lanes of traffic will be maintained eastbound and westbound during the day. There may be a single lane in each direction at night during off-peak hours (11 p.m. – 5 a.m.).
- Newly constructed lanes will be opened to the public when the project is complete.
- Construction impacts may include lighting and vibration from equipment operating on-site, and some noise from vehicle engines, generators or safety backup signals.
- Minor delays on Highway 1 near the project area can be expected, plan your trip accordingly.

Upcoming Activities

The activities described below will take place over the next 3 – 6 months. Paving activities are weather dependent and will primarily take place during favourable dry conditions.

- Install a waterproof membrane on the bridge deck, followed by an asphalt overlay.
- Complete sections of bottom and top lift paving on 216th Street north and south.
- Complete underground utility connections on the north and south side of 216th Street.
- Install lighting and railings on the bridge deck.
- Complete curb work and multi-use pathways.
- Lane paving on Highway 1 and on the eastbound and westbound interchange ramps.



Original Yorkson Creek culvert (north side)



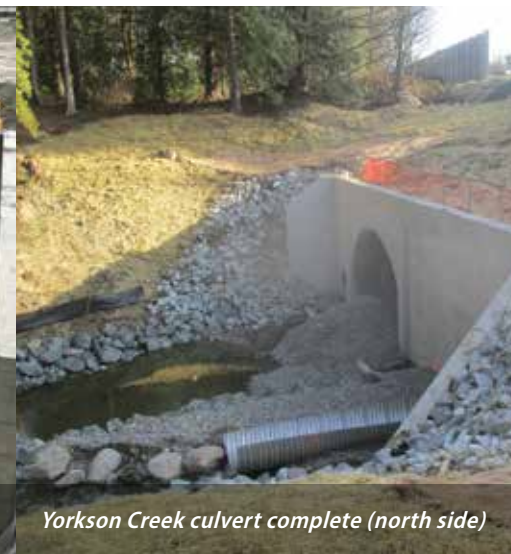
Preparing site to install culvert piping



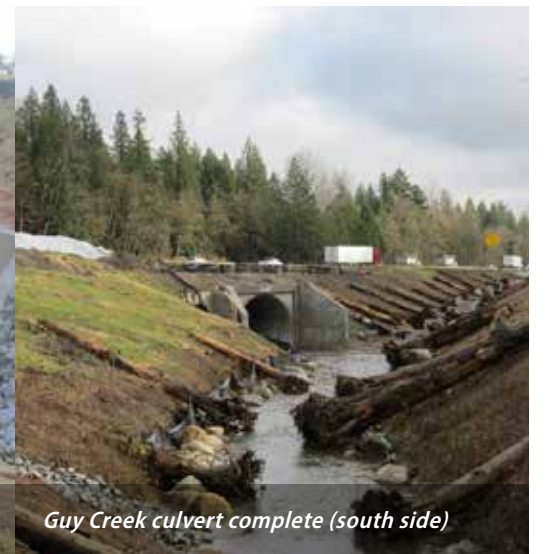
Casting headwall



Backfilling headwall



Yorkson Creek culvert complete (north side)



Guy Creek culvert complete (south side)

PROJECT UPDATES

The Ministry of Transportation and Infrastructure is committed to keeping the public informed about the project. Updates with information about ongoing activities and progress will be posted to the project website. Please visit: <http://www2.gov.bc.ca/gov/content/transportation/transportation-infrastructure/Projects/highway1-216th>

If you would like to sign up for project e-updates, or have questions, please email the project team at: 216interchange@gov.bc.ca.



Bridge deck pour, facing westbound Highway 1 traffic

Please remember, the speed limit in construction zones is 80 km/hr.
Protect site workers' lives – and your wallet from expensive fines.
Slow down, it's safer for everyone.