

216TH STREET INTERCHANGE AND HIGHWAY 1 IMPROVEMENT PROJECT



Ministry of
Transportation
and Infrastructure

PROJECT UPDATE JULY 2019



Highway 1 east facing

Construction Update

In April 2019, the Ministry of Transportation and Infrastructure (the Ministry) revised the project scope to upgrade the new general purpose travel lanes to HOV lanes from 200th Street to 216th Street. A key benefit of this upgrade will be the continuous HOV connection from Grandview Highway in Vancouver to 216th Street in Langley.

With this change to HOV lanes, the overall project is expected to be completed by winter 2020 instead of fall 2019 to allow for additional engineering, production of new overhead signs and the construction of large bases, poles, sign faces and protective barriers.

This is the fourth project update for the 216th Street Interchange and Highway 1 Improvement Project.

Activities Completed

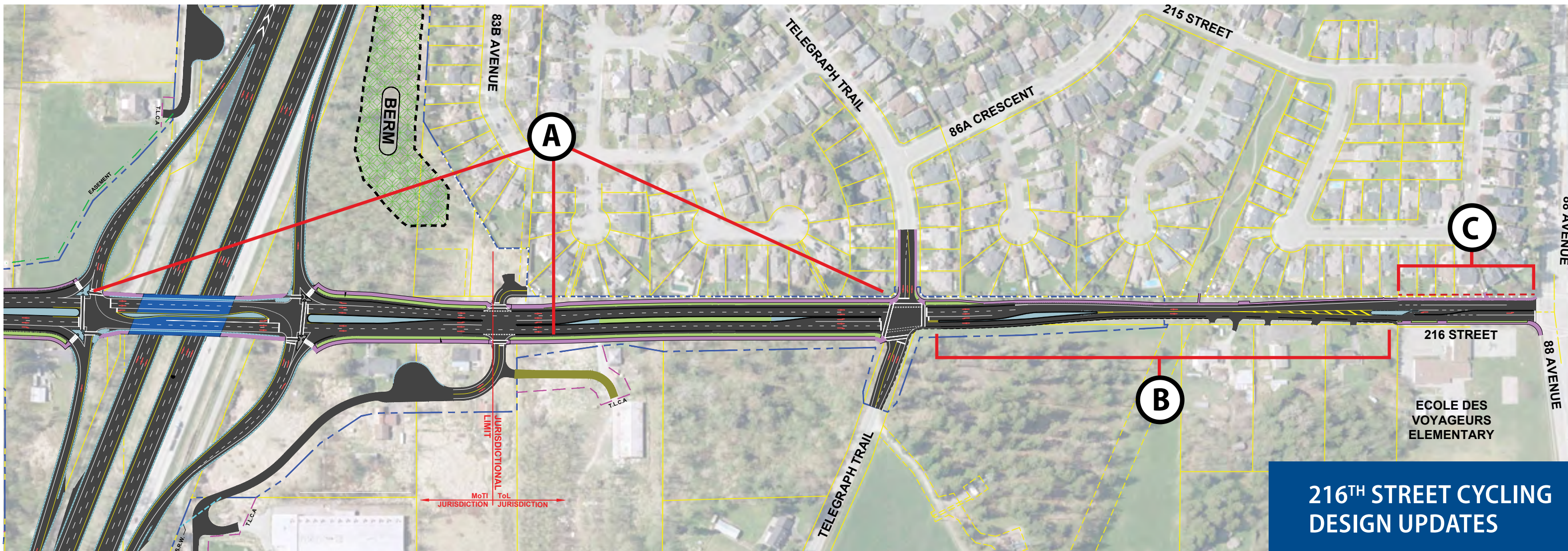
- The interchange footprint, including eastbound/westbound exit and entry ramps, have been constructed and have achieved final settlement to support further construction.
- All 38 bridge girders are in place on the bridge foundation.
- The north and middle section of Guy Creek and middle section of Yorkson Creek culverts have been installed.
- The absorptive sound wall across from École des Voyageurs school is complete.

Guy Creek culvert installation



216th Street north side sound wall





216TH STREET CYCLING DESIGN UPDATES

Bridge Girder Installation

A major milestone in the project construction was completed. In May, a crane lifted the 38 girders, each 35 metres-long, to form the bridge deck foundation. The two spans connect in the centre pier which is positioned in the median of Highway 1. The next stage of work includes pouring the concrete bridge deck and constructing the vehicle travel lanes, as well as the 3.0 metre multi-use pathways on both sides of the deck.

Upcoming Activities for Summer

Highway 1:

- Installing the south side section of Guy Creek culvert.
- Pouring and placing the overpass bridge deck on top of the bridge girders.
- Constructing the 5-metre concrete sound wall on the north side of Highway 1, from west of the berm up to west of 208th Street.
- Installing the north and south side sections of Yorkson Creek culvert.

216th Street:

- Grading 216th Street north of the highway.
- Completing the curbs, sidewalk, boulevard, and paving south of the highway.
- Design updates for cyclists on 216th Street include (see map above):
 - Installing a curb to separate vehicles from the cycle lanes on both sides of 216th Street, from 80th Avenue in the south to Telegraph Trail in the north.
 - Installing a 1.5 metre wide curb separated shoulder on the east side of 216th Street between Telegraph Trail and École des Voyageurs.

A Addition of 1.8 m wide curb separated bike lane on both sides of 216th St. from 80th Ave. in south to Telegraph Trail.

B Addition of 1.5 m wide curb separated shoulder (for cyclists and pedestrians) on east side of 216th St. between Telegraph Trail and École des Voyageurs.

C Addition of 3.0 m absorptive sound wall across from École des Voyageurs.

Bridge girder installation over Highway 1



Nighttime girder installation



What You Can Expect

- Please be advised that nighttime construction activities may take place as the project progresses.
- East and westbound Highway 1 lanes will be continually shifted to the north and south to facilitate the culvert section installations for Guy and Yorkson Creek.
- Two lanes of traffic will be maintained eastbound and westbound during the day. There will be a single lane for each direction at night.
- Newly constructed lanes will be used to facilitate construction equipment and will not be opened to the public until the project is complete.
- Construction impacts may include lighting and vibration from equipment operating on-site, as well as some noise from vehicle engines, generators or safety backup signals.



Detour lanes on Highway 1, west facing

Project Updates

The Ministry of Transportation and Infrastructure is committed to keeping the public informed about the project. Updates with information about ongoing activities and progress will be posted to the project website.

Please visit: <http://www2.gov.bc.ca/gov/content/transportation/transportation-infrastructure/Projects/highway1-216th>

If you would like to sign up for project e-updates, or have questions, please email the project team at: 216interchange@gov.bc.ca.

Please remember, the speed limit in construction zones is 80 km/hr.
Protect site workers lives – and your wallet from expensive fines.
Slow down, it's safer for everyone.