

# WELCOME

**Thank you for attending the open house for the Highway 91/17 and Deltaport Way Upgrade Project. Today we welcome you to:**

- Meet members of the Project team and ask questions about the Project
- View the display boards and learn about the Project
- Provide your feedback
- Learn how to stay informed about the Project

***Please submit your feedback by July 12, 2018:***

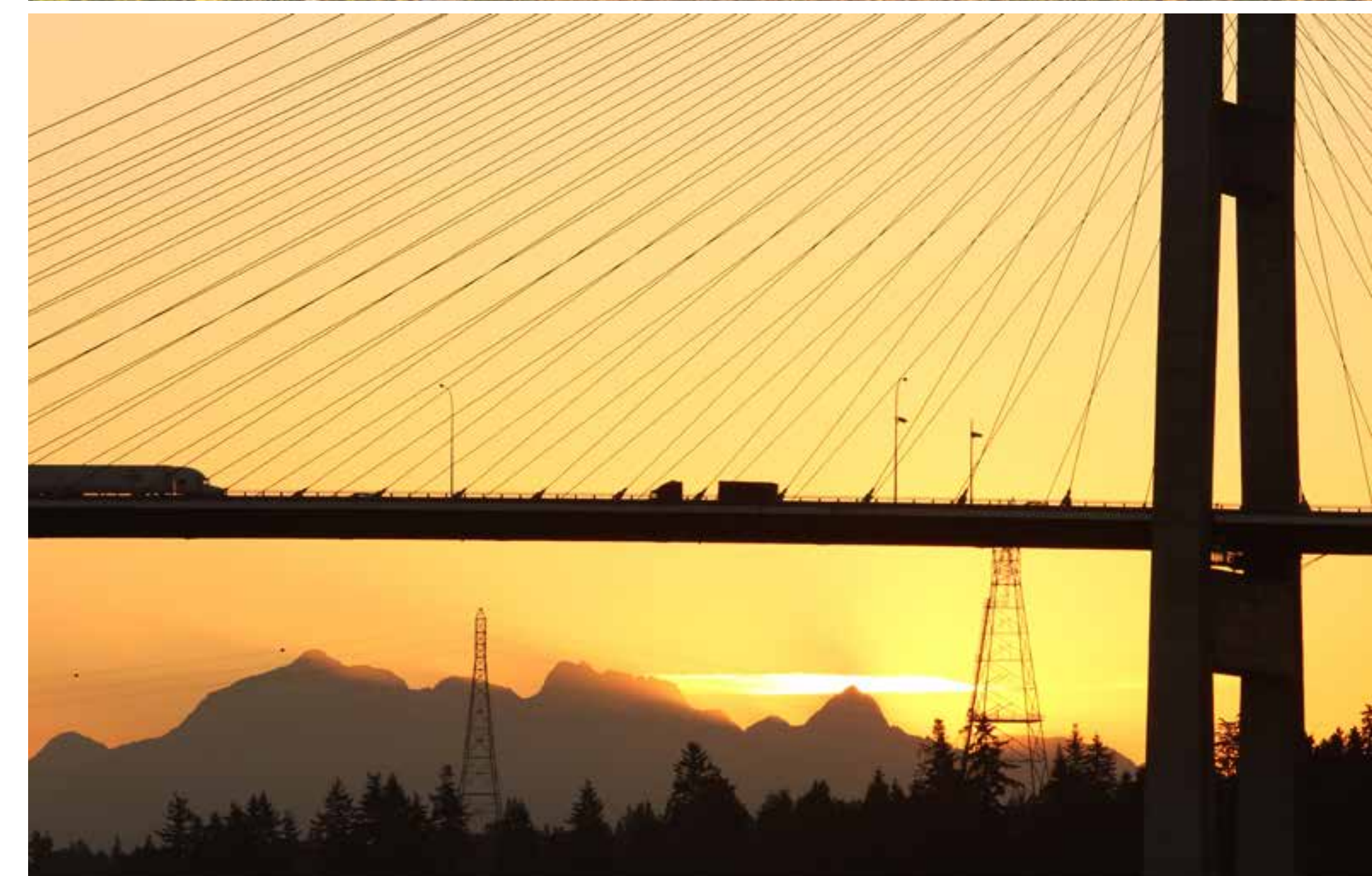
**In person** at today's **open house**

**By email:** info.hwy91\_17@gov.bc.ca

**By mail:** Highway 91/17 and Deltaport Way Upgrade Project  
Ministry of Transportation and Infrastructure  
Suite 1450-605 Robson Street  
Vancouver, B.C. V6B 5J3

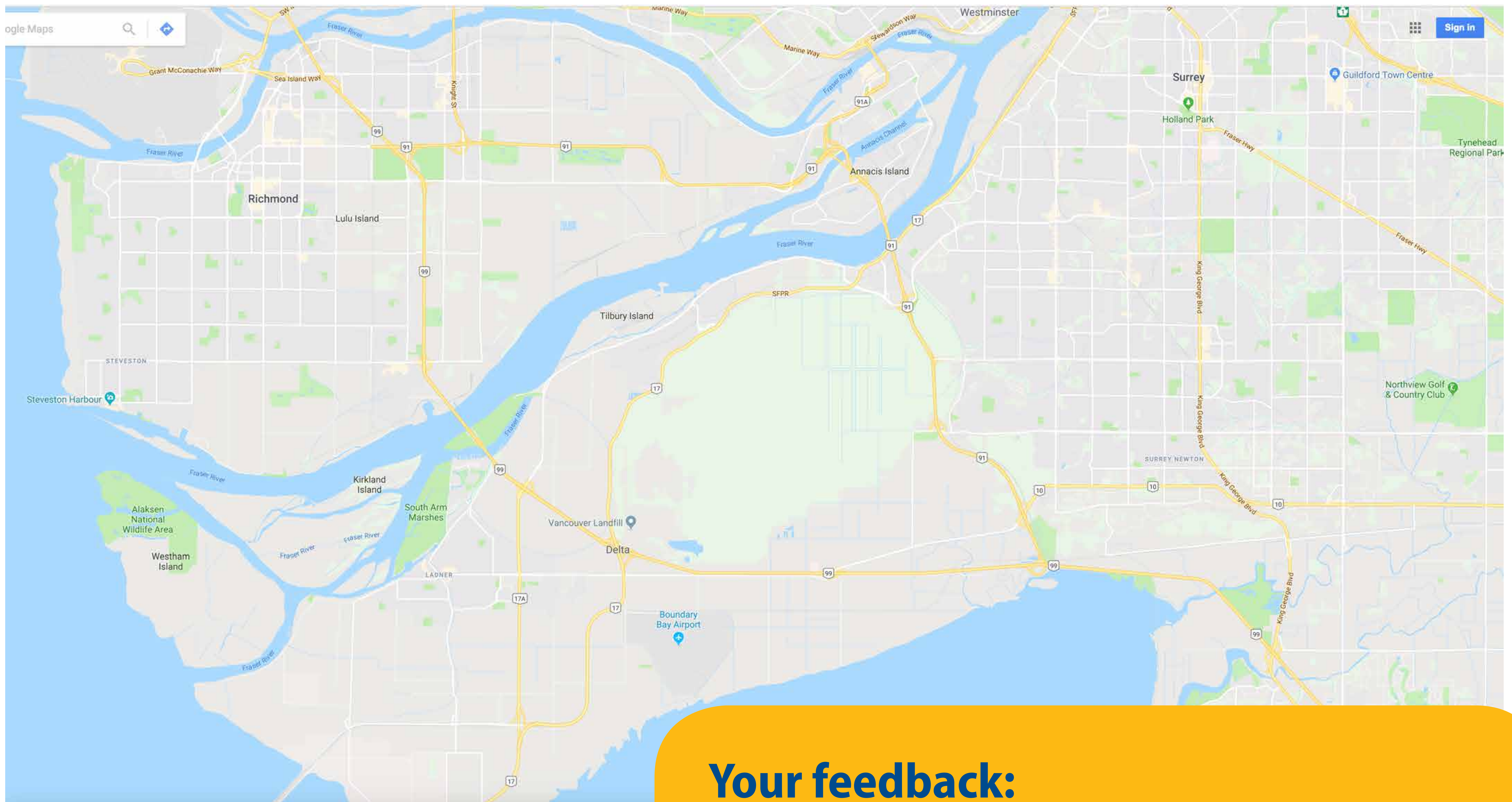
For more information, please visit:



**[www.gov.bc.ca/highway91-17-deltaport](http://www.gov.bc.ca/highway91-17-deltaport)**





# WHO'S TALKING ABOUT THIS INVESTMENT



 WORK  HOME

## Your feedback:

*Tell us where you are from. Please use a pushpin to show where you work or live in the Project area. If you work or live outside of the area shown, use the white space around the map and add a sticky note with your points of origin or destination.*



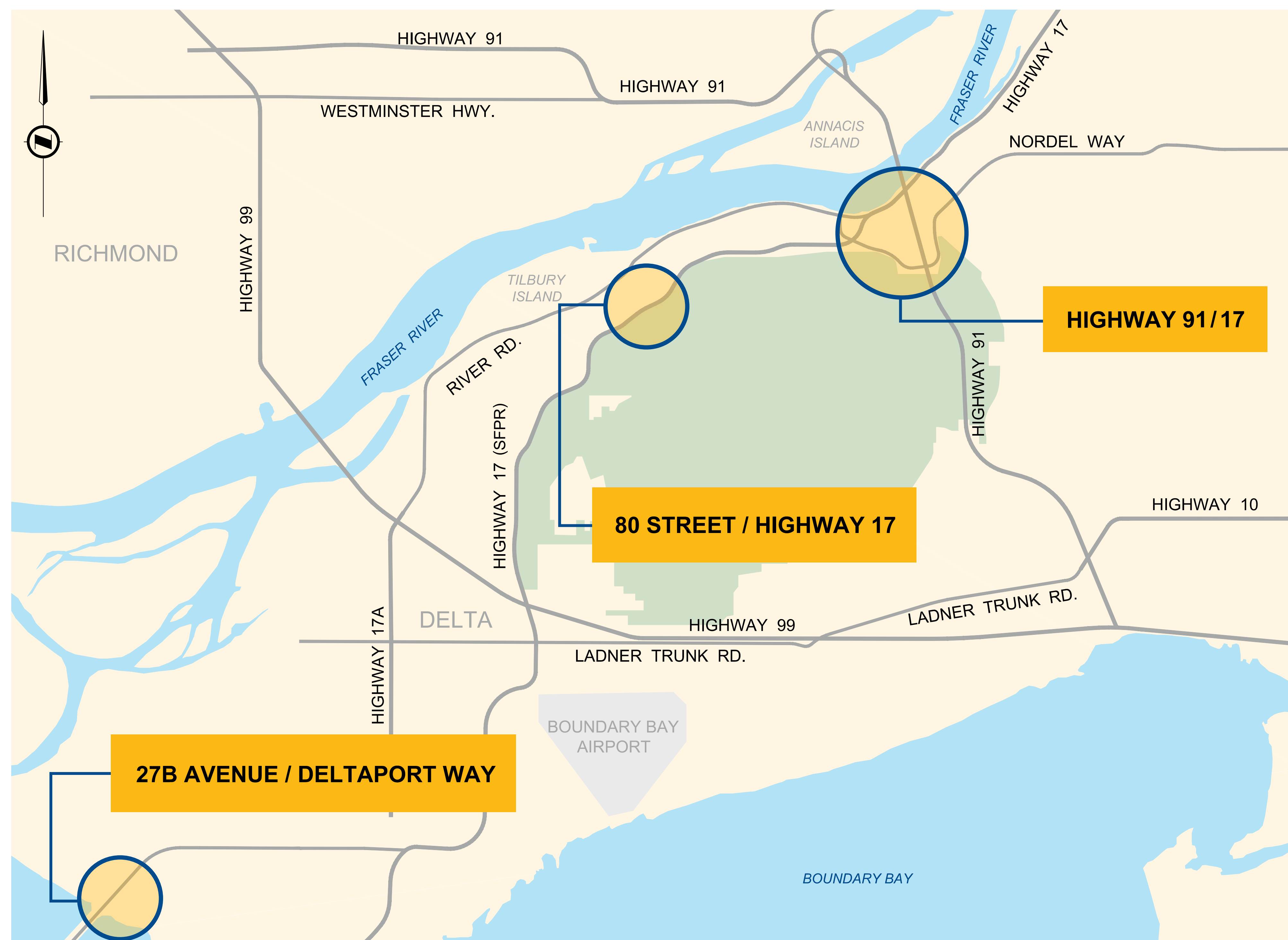
# PROJECT OVERVIEW

The Highway 91/17 and Deltaport Way Upgrade Project is a combination of improvements to Highway 91, Highway 17, the Highway 91 Connector and Deltaport Way to improve travel safety, reliability and efficiency as goods movement, commercial and local traffic continue to grow. The Project will:

- Improve travel time and reliability through Delta
- Improve traffic safety for goods movers and the travelling public
- Support community and economic development

Funding partners include the Province of British Columbia, the National Infrastructure Component of the New Building Canada Fund, the Vancouver Fraser Port Authority and the Tsawwassen First Nation.

These improvements complement the Alex Fraser Bridge and 72<sup>nd</sup> Avenue Interchange Projects

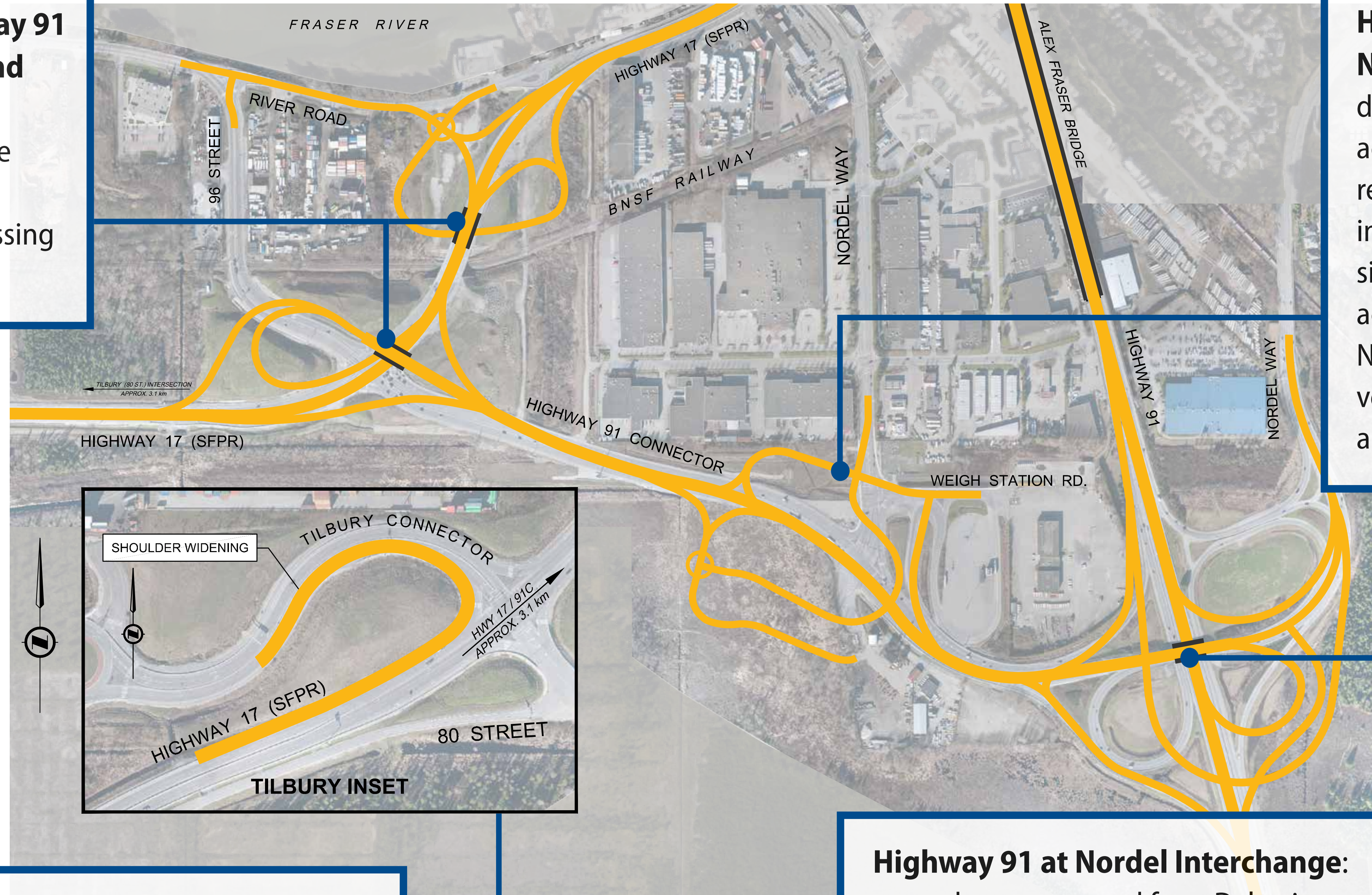




# PROJECT DESIGN: HIGHWAY 91 & 17

**Highway 17 and Highway 91 Connector (Sunbury) and River Road connection:** new interchange to replace signalized intersection; eliminate at-grade rail crossing to access the highway.

**Highway 91 Connector at Nordel Way intersection:** direct access roads and additional turning lanes to remove one signal light and improve all movements; significantly improved access to and from the Nordel Way commercial vehicle inspection station and truck parking area.



**Highway 17 at 80th Street (Tilbury):** upgrade the connection from 80th Street to Highway 17 westbound, to improve merging and reduce queuing on 80th Street.

**Highway 91 at Nordel Interchange:** upgrade ramps to and from Delta; improve acceleration and deceleration lanes; additional through-lanes for Nordel Way traffic crossing over Highway 91.

## Your feedback:

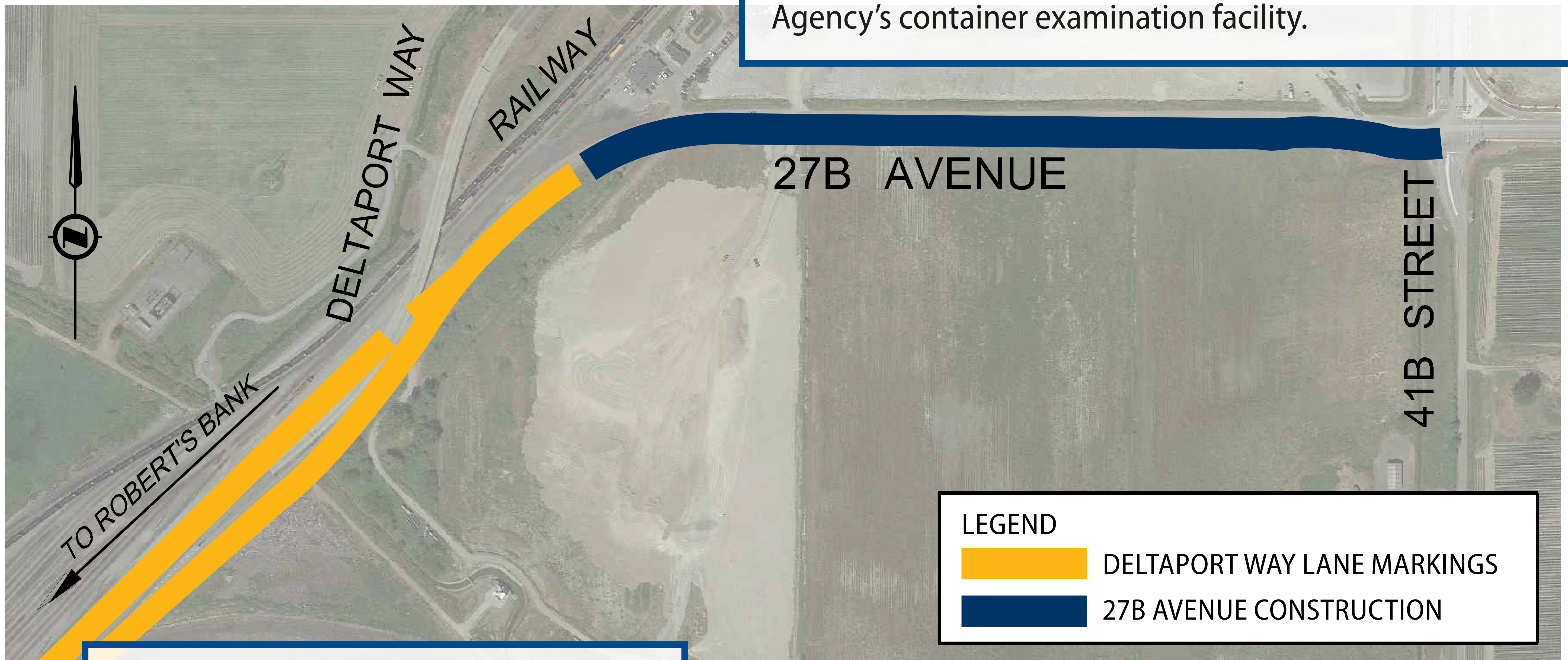
*Place a sticky dot to indicate the improvements you like most, or sticky note to add other benefits you see.*

Cycling measures are being assessed, including looking at ways to improve access to designated cycling routes in Delta.



# PROJECT DESIGN: DELTAPORT WAY & 27B AVENUE

\* **27B Avenue between Deltaport Way and 41B Street:** widen and upgrade roadway to improve access to industrial lands and the Canadian Border Service Agency's container examination facility.



**27B Avenue to Deltaport Way access:** provide a smoother, safer merge for westbound traffic.

## Your feedback:

Place a sticky dot to indicate the improvements you like most, or sticky note to add other benefits you see.

\* Funding partners for this portion of the Project are the Tsawwassen First Nation and Government of Canada.



# PROTECTING THE ENVIRONMENT

## The Project offers a number of environmental benefits, including:

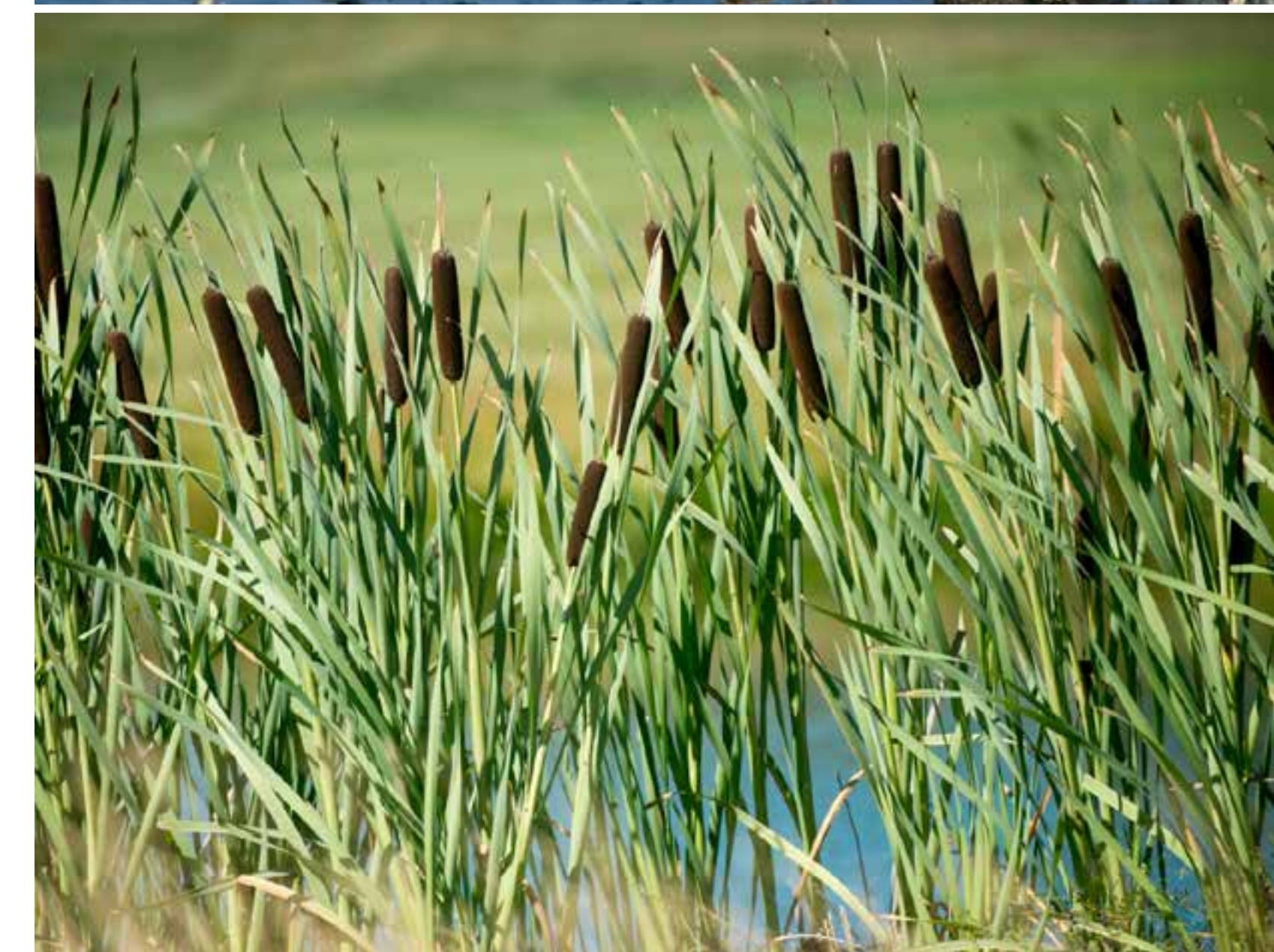
- Improve drainage to help regulate the flow of water in ditches and protect the hydrology and water quality of Burns Bog
- Manage stormwater and prevent road runoff from entering Burns Bog
- Protect and potentially improve upon environmental measures installed as part of the South Fraser Perimeter Road Project (Highway 17)
- Reduce vehicle accidents/truck rollovers that can cause spills and other environmental effects
- Improve air quality through reduced congestion at the truck inspection station and throughout the Highway 91 to Highway 17 corridor
- Relocate and improve boardwalk along a section of the trail in the Delta Nature Reserve near Highway 91

Construction management plans based on best practices will be developed to avoid or minimize potential construction-related environmental impacts, including:

- Air quality and dust control
- Soil erosion and sediment control
- Protecting vegetation, wildlife and aquatic resources

The Ministry will conduct environmental monitoring during Project construction to ensure compliance with all environmental requirements and commitments. Post-construction monitoring will be undertaken to confirm the effectiveness of long-term environmental protection measures.

The Project team will work closely with Indigenous Groups, the City of Delta, Metro Vancouver, scientific experts including the Burns Bog Scientific Advisory Panel, and identified stakeholder groups to consider opportunities to improve existing conditions, where feasible, as part of the Project.





# ENVIRONMENTAL REVIEW

An environmental review for the entire Project area is being conducted to ensure potential environmental effects are assessed and appropriately addressed. The assessment builds on the applicable environmental commitments of the South Fraser Perimeter Road Environmental Assessment Certificate and includes:

- Vegetation
- Wildlife and wildlife habitat
- Fisheries and aquatic resources
- Hydrology and water quality
- Agriculture
- Contaminated sites
- Noise
- Air quality
- Archaeology

Once complete, the report will be posted to the Project website.



**Your feedback:** *What questions do you have for the environmental review? Please use the feedback form to provide your comments.*



# CONSTRUCTION MANAGEMENT

The Ministry will require the construction contractor to develop construction management plans, using best industry practice, to keep traffic moving and maintain business activity in the area. This will include:

- Advance notification of traffic pattern changes
- Maintaining business access
- Coordination with other Ministry projects in the area



**Your feedback:** *What questions do you have about construction management?*

*Please complete a feedback form to let us know what construction information you would like to have and how you would like to be informed.*



# NEXT STEPS

## Thank you for your input!

Next steps include:

- Post summary of open house feedback to the Project website once complete
- Consider input along with technical and financial information, in finalizing Project designs
- Early work to prepare for Project construction



**June 28, 2018**  
**WE ARE HERE**