

# Highway 91/17 Upgrade Project

---

MONTHLY STATUS REPORT

Month Ending June 30, 2022

# 1. PROJECT DASHBOARD

Project Delivery Objectives		Overall Project	DB Contractor	Owners/Other Works	Comments
<b>Safety</b>	Take every reasonable step to ensure that the work is performed safely and in compliance with all applicable safety regulations, and in accordance with government policy.	●	●	●	Safety meetings and orientations ongoing.
<b>Budget</b>	Delivered within the approved budget.	●	●	●	The Project has an approved capital budget of \$260 million and continues to track on budget.
<b>Schedule</b>	Delivered within the approved schedule.	●	●	●	Most key Project activities are proceeding on schedule. Working to mitigate potential schedule impacts
<b>Scope</b>	Deliver the approved scope.	●	●	●	Delivery of the specified components is on track.
<b>Indigenous Groups</b>	Continue to build and maintain a positive collaborative working relationship	●	●	●	Discussions and consultation with Indigenous groups ongoing.
<b>Environmental</b>	Ensure the work is performed in an environmentally responsible manner.	●	●	●	The Project is being delivered in accordance with the obligations identified in the Construction Environment Management Plan.
<b>Community Benefits</b>	Incorporate the Community Benefits Objectives into the Project.	●	●	●	Community Benefits Objectives outlined in the Design-Build Agreement for implementation by the Design-Builder.
<b>Third Parties</b>	Continue to build and maintain positive relationships with Project Partners and other third parties.	●	●	●	Early and frequent engagement and advancing agreements with Project partners and other third parties.
<b>Stakeholder Engagement</b>	Continue to build and maintain positive relationships with the community, and other stakeholders.	●	●	●	Engagement with key Project partners is ongoing. Community and stakeholder engagement will continue.
<b>Quality</b>	Implement and Maintain an effective Quality Management System.	●	●	●	Quality audits and reviews performed as required per the Quality Management Plan.

Status	Description
●	Not currently applicable, as the Owner's Works are complete
●	Managing some issues, negotiating resolution; required immediately
●	Managing some issues, negotiating resolution; required in the near term
●	Good progress

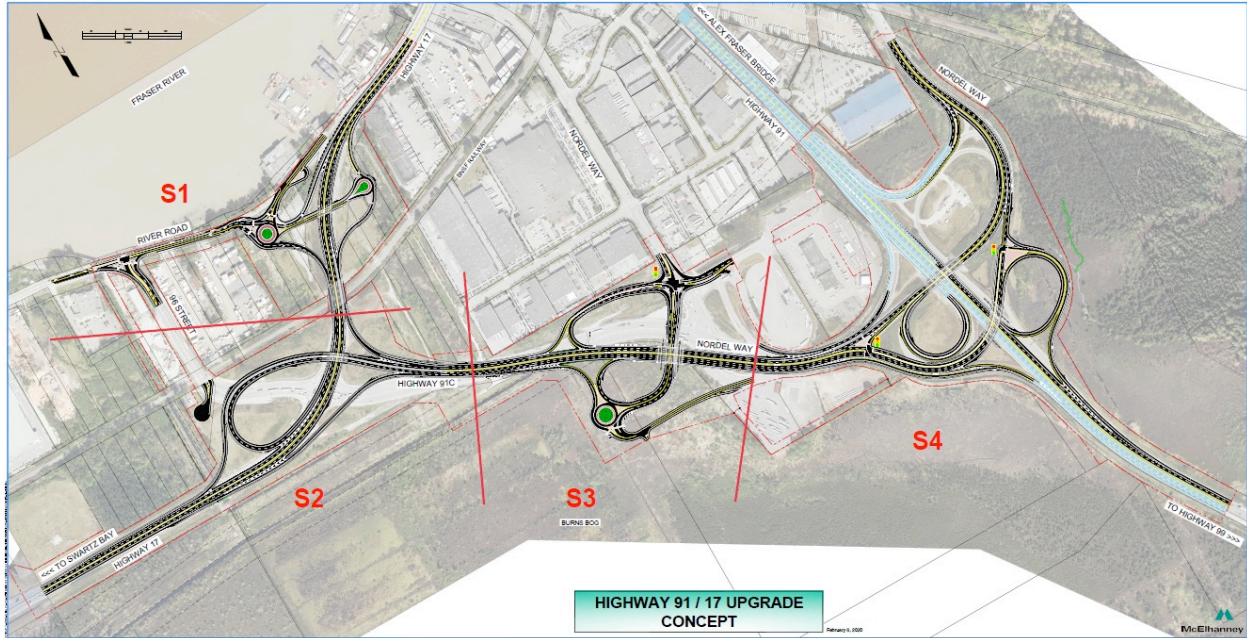
## 2. Introduction

### Project Overview

The Highway 91/17 & Deltaport Way Upgrade Project (the Program) is comprised of the Highway 91/17 Upgrade Project, as well as the 27B Avenue and Deltaport Way Improvements Project. The 27B Avenue and Deltaport Way improvements were completed in 2019 and are no longer reported out on in the monthly reports.

The Highway 91/17 Upgrade Project (the Project) is a subcomponent project of the broader Program and includes a combination of improvements to the existing Highway 91, Highway 17, and Highway 91 Connector corridors to improve travel safety and efficiency. These upgrades will improve local and commercial travel time and reliability in the area, reduce conflicts between commercial vehicles and other traffic, and support community and economic development. The Highway 91/17 components also complement the recently completed 72nd Avenue Interchange Project and the Alex Fraser Bridge Project.

A Design-Build Agreement between the BC Ministry of Transportation and Infrastructure (the Ministry), the BC Transportation Financing Authority (BCTFA), and Pacific Gateway Constructors General Partnership (the Design-Builder) was signed on December 13, 2019. As such, the Project has entered the implementation phase and a comprehensive Monthly Status Report will be prepared to report on progress, budget status, and risk.



## June 2022 Highlights

Project highlights this month include:

<b>Stakeholder Engagement</b>	<ul style="list-style-type: none"> <li>Ongoing public and stakeholder notification to advise of Project activities including upcoming traffic and construction activities</li> </ul>
<b>Environment</b>	<ul style="list-style-type: none"> <li>Environmental protection measures continue as part of active construction areas, actively addressing any areas of concern,</li> <li>Design-Builder providing environmental submissions</li> <li>Design-Builder continues work on Habitat Offsetting sites; weather dependent</li> <li>Project continues to maintain focus on some site issues, in particular elevated turbidity in watercourses.</li> </ul>
<b>Safety</b>	<ul style="list-style-type: none"> <li>Safety inspections ongoing</li> <li>One first aid incident reported</li> </ul>
<b>Design</b>	<ul style="list-style-type: none"> <li>Ongoing development and review of Design-Builder guide sign detailed design</li> </ul>
<b>Construction</b>	<p>Segment 1 – River Road / Highway 17 Interchange</p> <ul style="list-style-type: none"> <li>Post-construction informal walk through completed</li> </ul> <p>Segment 2 – Highway 91C / Highway 17 Interchange</p> <ul style="list-style-type: none"> <li>Ongoing Hwy 17 structure deck pour preparation</li> <li>Gravel widening of Hwy 17 WB lanes</li> </ul> <p>Segment 3 – Highway 91C / Weigh Scale Interchange</p> <ul style="list-style-type: none"> <li>Segment 3 structure parapets construction</li> <li>Pumice installation Weigh Scale Road EB lanes and Hwy 91 south</li> </ul> <p>Segment 4 – Nordel Way / Highway 91 Interchange</p> <ul style="list-style-type: none"> <li>Segment 4 structure construction ongoing with girders and deck panel installation</li> <li>Ongoing Nordel Way EB lane leveling paving</li> <li>Hwy 91 east side culvert installation with lane shifts</li> </ul>
<b>Traffic Management</b>	<ul style="list-style-type: none"> <li>Hwy 17 WB and EB nighttime slow lane closure.</li> <li>Hwy 91C EB nighttime slow lane closure.</li> <li>Nordel Way WB and EB nighttime lane closures.</li> </ul>
<b>Quality</b>	<ul style="list-style-type: none"> <li>Development/assembling of Quality Turnover Packages</li> <li>Ongoing auditing and site monitoring of Design-Builder</li> </ul>

### 3. PROJECT DELIVERY

#### Project Controls

<b>Completed this Month</b>	<ul style="list-style-type: none"> <li>Ongoing project control meetings</li> <li>Ongoing review of Risk Register</li> <li>Ongoing review of project schedule, scope and budget</li> </ul>
<b>Key activities for Next 3 months</b>	<ul style="list-style-type: none"> <li>Ongoing project control meetings</li> <li>Ongoing review of Risk Register</li> <li>Ongoing review of project schedule, scope and budget</li> </ul>

## 4. PROJECT DEVELOPMENT

### Communications and Stakeholder Engagement

<p><b>Completed this Month</b></p>	<ul style="list-style-type: none"> <li>• Provided updates to interested stakeholder groups as requested</li> <li>• Reviewed Design-Builder communications submissions</li> <li>• Supported the Design-Builder with traffic and construction notifications to the public, community, and stakeholders</li> <li>• Ongoing Project website updates</li> <li>• Ongoing enquiry response</li> </ul>
<p><b>Key Activities for Next 3 months</b></p>	<ul style="list-style-type: none"> <li>• Continue to support the Design-Builder regarding upcoming traffic and construction notifications to the public, community and stakeholders</li> <li>• Ongoing enquiry response</li> <li>• Ongoing Project website updates</li> </ul>

### Environment

<p><b>Completed this Month</b></p>	<ul style="list-style-type: none"> <li>• Ongoing regular weekly meetings with the Design-Builder regarding environmental components of the Project</li> <li>• Ongoing review of environmental reports and Project Site to ensure potential issues are being addressed</li> <li>• Environmental Work Plans continue to be received, reviewed and put into effect</li> <li>• Design-Builder continues to manage the environment and permit obligations</li> <li>• Habitat Offsetting/Landscaping site work continuing where sites are available and ready</li> <li>• Project received and posted annual water quality report for Burns Bog</li> </ul>
<p><b>Key Activities for Next 3 months</b></p>	<ul style="list-style-type: none"> <li>• On-site environmental monitoring of the Design-Builder’s environmental mitigation measures to confirm compliance during construction</li> <li>• Maintain prudent environmental site monitoring</li> <li>• Ongoing submission review in accordance with the DBA requirements</li> <li>• Commence discussions on Project close-out requirements with the Design-Builder</li> </ul>

### Agriculture

<p><b>Completed this Month</b></p>	<ul style="list-style-type: none"> <li>• No activity this month</li> </ul>
<p><b>Key activities for Next 3 months</b></p>	<ul style="list-style-type: none"> <li>• Monitor construction to meet Agricultural Land Commission (ALC) conditions and proceed with any action items</li> </ul>

### Indigenous Groups

<p><b>Completed this Month</b></p>	<ul style="list-style-type: none"> <li>• Ongoing review and sharing of key Project documents with Indigenous groups</li> </ul>
------------------------------------	--

	<ul style="list-style-type: none"> <li>• Meetings ongoing with Design-Builder and Project team</li> <li>• Continued communication with Indigenous groups regarding Project construction activities and cultural recognition opportunities</li> <li>• Contracting and employment opportunities for environmental monitoring ongoing</li> </ul>
Key Activities for Next 3 months	<ul style="list-style-type: none"> <li>• Responses to Indigenous group comments on key project updates</li> <li>• Continued communication with Indigenous groups regarding project construction activities and cultural recognition opportunities</li> </ul>

## 5. DESIGN BUILD PROGRESS

### Safety

Completed this Month	<ul style="list-style-type: none"> <li>• Pacific Gateway Constructors is the Prime Contractor on the Project Site</li> <li>• Onsite safety training sessions held for all on site staff</li> </ul>
Key Activities for Next 3 months	<ul style="list-style-type: none"> <li>• Construction activities and ongoing site safety training sessions as required</li> <li>• Daily &amp; weekly safety briefings for active site crews</li> <li>• Monthly mass safety meetings</li> </ul>
Safety Incidents	<ul style="list-style-type: none"> <li>• One first aid incident reported</li> <li>• Six property damage incidents reported</li> </ul>

### Design

Completed this Month	<ul style="list-style-type: none"> <li>• Review of Delta Nature Reserve (DNR) Boardwalk turnover package</li> <li>• Review of ongoing submissions and variance requests</li> <li>• Ongoing review of traffic control plan variance requests</li> <li>• Proposed guide signs in Hwy 17 closed landfill area under review</li> </ul>
Key Activities for Next 3 months	<ul style="list-style-type: none"> <li>• Review PGC Records Documentation/Turnover Packages</li> <li>• Ongoing review of Project-wide guide sign designs</li> <li>• Perform informal site walkthroughs and generate interim deficiency lists</li> <li>• Ongoing meetings with various regulatory agencies/stakeholders as required</li> </ul>

### Construction

Completed this Month	<p><b>Segment 1 – River Road / Highway 17 Interchange</b></p> <ul style="list-style-type: none"> <li>• Guide sign installation in Sunbury west ramps</li> <li>• Post-construction informal walk through completed</li> </ul> <p><b>Segment 2 – Highway 91C / Highway 17 Interchange</b></p> <ul style="list-style-type: none"> <li>• Ongoing paving at south approach to Segment 2 bridge</li> <li>• Ongoing Hwy 17 structure deck pour preparation</li> <li>• Gravel widening of Hwy 17 WB lanes</li> <li>• Sand preload removal on Hwy 17 west alignments</li> </ul> <p><b>Segment 3 – Highway 91C / Weigh Scale Interchange</b></p> <ul style="list-style-type: none"> <li>• Segment 3 structure parapets construction</li> </ul>
----------------------	--

	<ul style="list-style-type: none"> <li>• Paving on Hwy 91C north and roundabout</li> <li>• Ongoing leveling courses on Hwy 91C</li> <li>• Pumice installation Weigh Scale Road EB lanes and Hwy 91 south</li> </ul> <p><b>Segment 4 – Nordel Way / Highway 91 Interchange</b></p> <ul style="list-style-type: none"> <li>• Nordel Way lead installation</li> <li>• Segment 4 structure construction ongoing with girders and deck panel installation</li> <li>• Ongoing Nordel Way EB lane leveling paving</li> <li>• Hwy 91 east side culvert installation with lane shifts</li> </ul>
<b>Key Activities for Next 3 months</b>	<p><b>Segment 1 – River Road / Highway 17 Interchange</b></p> <ul style="list-style-type: none"> <li>• Guide sign installation</li> <li>• Top lift paving on Hwy 17 east of new structure</li> <li>• River Road top lift pavement</li> </ul> <p><b>Segment 2 – Highway 91C / Highway 17 Interchange</b></p> <ul style="list-style-type: none"> <li>• Segment 2 structure deck pour</li> <li>• Excavation and construction of Hwy 17 west ramp, east of box culvert</li> </ul> <p><b>Segment 3 – Highway 91C / Weigh Scale Interchange</b></p> <ul style="list-style-type: none"> <li>• Nordel Way at Weigh Scale Road intersection construction</li> <li>• Weigh Scale structure construction</li> <li>• Roundabout construction</li> </ul> <p><b>Segment 4 – Nordel Way / Highway 91 Interchange</b></p> <ul style="list-style-type: none"> <li>• Nordel Way cross culvert and widening</li> <li>• Nordel Way structure columns and pier cap construction</li> <li>• Preload removal in southeast quadrant of Nordel interchange</li> <li>• Embankment fill on east side of Hwy 91</li> </ul>

## Traffic Management

<b>Completed this Month</b>	<ul style="list-style-type: none"> <li>• Hwy 91 SB to Nordel Way EB offramp closures</li> <li>• Hwy 17 WB nighttime slow lane closure</li> <li>• Hwy 91C WB nighttime slow lane closures</li> <li>• Nordel Way WB and EB lane closures</li> </ul>
<b>Key Activities for Next 3 months</b>	<ul style="list-style-type: none"> <li>• Nighttime lane closures Hwy 17 EB, WB, and Hwy 91C</li> <li>• Nighttime lane closures Nordel way to Hwy 91 SB</li> <li>• July long weekend warrior with S3 interchange opening</li> <li>• Weekend day and night closures Hwy 91 SB slow lane</li> <li>• Weekend day and night closures Hwy 17 EB and WB slow lanes</li> </ul>

## Quality

<b>Completed this Month</b>	<ul style="list-style-type: none"> <li>• Ongoing monitoring of quality management system</li> <li>• Development/assembling of Quality Turnover Packages</li> <li>• Ongoing auditing and site monitoring of the Design-Builder</li> </ul>
<b>Key Activities for Next 3 months</b>	<ul style="list-style-type: none"> <li>• Ongoing implementation and monitoring of quality management system</li> <li>• Ongoing quality audits</li> <li>• Development/assembling of Quality Turnover Packages</li> </ul>

## 6. Milestones Achieved Date

The milestone dates shown in DBA Schedule 3 Appendix A have been updated in the June 2022 Works Schedule submitted by the Design-Builder as follows:

Activity Name	DBA Milestone Date:	Milestone Date (June 2022 Works Schedule)
<b>Construction Start</b>		
Highway 91 / Nordel Way Interchange	April 6, 2020	June 16, 2020
Delta Nature Reserve Boardwalk	July 2, 2020	September 28, 2020
Highway 91C / Weigh Scale Interchange	April 6, 2020	August 14, 2020
Highway 91C/ Highway 17 Interchange	April 6, 2020	July 12, 2020
Highway 17 / River Road Interchange	April 6, 2020	May 8, 2020
<b>Construction Complete</b>		
Highway 91 / Nordel Way Interchange	September 15, 2022	November 28, 2022
Delta Nature Reserve Boardwalk	October 6, 2020	March 8, 2021
Highway 91C / Weigh Scale Interchange	March 15, 2023*	November 16, 2022
Highway 91C/ Highway 17 Interchange	March 15, 2023*	November 24, 2022
Highway 17 / River Road Interchange	October 4, 2021	December 2, 2021
Substantial Completion Date	November 30, 2022	December 1, 2022
Total Completion Date	May 31, 2023	May 19, 2023

\* Deferred completion date for limited alignments; majority of Section complete for November 30, 2022

Non-conforming Milestone dates and corrective actions to address schedule delays are under discussion with the Design-Builder.



## 7. Site Photographs



Hwy 91 and Nordel Interchange installation of girders for bridge structure. Taken June 6, 2022



Hwy 17 overpass work. Taken June 11, 2022



Hwy 17/Hwy 91C paving of east and west approaches; preparations for the deck concrete pour. Taken June 16, 2022



River Road/Hwy 17 final completion works. Taken June 16, 2022



Hwy 91C/Nordel Way deck pour and paving of ramps. Taken June 16, 2022



New Hwy 91 overpass deck panel install. Taken June 23, 2022

## 8. Project Cost Report

- To date, \$198.3 million has been spent on the Project
- The approved capital Project budget is \$260 million