

# Highway 91/17 Upgrade Project

---

MONTHLY STATUS REPORT

Month Ending April 30, 2022

# 1. PROJECT DASHBOARD

Project Delivery Objectives		Overall Project	DB Contractor	Owners/Other Works	Comments
<b>Safety</b>	Take every reasonable step to ensure that the work is performed safely and in compliance with all applicable safety regulations, and in accordance with government policy.	●	●	●	Safety meetings and orientations ongoing.
<b>Budget</b>	Delivered within the approved budget.	●	●	●	The Project has an approved capital budget of \$260 million and continues to track on budget.
<b>Schedule</b>	Delivered within the approved schedule.	●	●	●	Most key Project activities are proceeding on schedule. Working to mitigate potential schedule impacts
<b>Scope</b>	Deliver the approved scope.	●	●	●	Delivery of the specified components is on track.
<b>Indigenous Groups</b>	Continue to build and maintain a positive collaborative working relationship	●	●	●	Discussions and consultation with Indigenous groups ongoing.
<b>Environmental</b>	Ensure the work is performed in an environmentally responsible manner.	●	●	●	The Project being delivered in accordance with the obligations identified in the Construction Environment Management Plan.
<b>Community Benefits</b>	Incorporate the Community Benefits Objectives into the Project.	●	●	●	Community Benefits Objectives outlined in the Design-Build Agreement for implementation by the Design-Builder.
<b>Third Parties</b>	Continue to build and maintain positive relationships with Project Partners and other third parties.	●	●	●	Early and frequent engagement and advancing agreements with Project partners and other third parties.
<b>Stakeholder Engagement</b>	Continue to build and maintain positive relationships with the community, and other stakeholders.	●	●	●	Engagement with key Project partners is ongoing. Community and stakeholder engagement will continue.
<b>Quality</b>	Implement and Maintain an effective Quality Management System.	●	●	●	Quality audits and reviews performed as required per the Quality Management Plan.

Status	Description
●	Not currently applicable, as the Owner's Works are complete
●	Managing some issues, negotiating resolution; required immediately
●	Managing some issues, negotiating resolution; required in the near term
●	Good progress

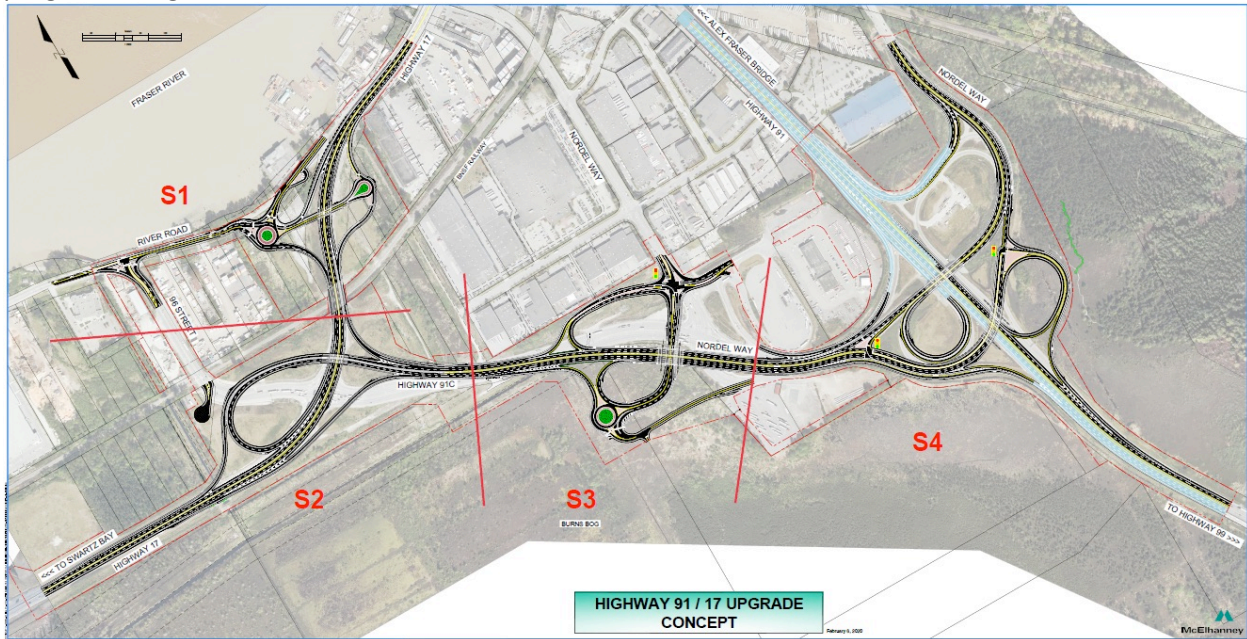
## 2. Introduction

### Project Overview

The Highway 91/17 & Deltaport Way Upgrade Project (the Program) is comprised of the Highway 91/17 Upgrade Project, as well as the 27B Avenue and Deltaport Way Improvements Project. The 27B Avenue and Deltaport Way improvements were completed in 2019 and are no longer reported out on in the monthly reports.

The Highway 91/17 Upgrade Project (the Project) is a subcomponent project of the broader Program and includes a combination of improvements to the existing Highway 91, Highway 17, and Highway 91 Connector corridors to improve travel safety and efficiency. These upgrades will improve local and commercial travel time and reliability in the area, reduce conflicts between commercial vehicles and other traffic, and support community and economic development. The Highway 91/17 components also complement the recently completed 72nd Avenue Interchange Project and the Alex Fraser Bridge Project.

A Design-Build Agreement between the BC Ministry of Transportation and Infrastructure (the Ministry), the BC Transportation Financing Authority (BCTFA), and Pacific Gateway Constructors General Partnership (the Design-Builder) was signed on December 13, 2019. As such, the Project has entered the implementation phase and a comprehensive Monthly Status Report will be prepared to report on progress, budget status, and risk.



## April 2022 Highlights

Project highlights this month include:

<b>Stakeholder Engagement</b>	<ul style="list-style-type: none"> <li>• Ongoing public and stakeholder notification to advise of Project activities including upcoming traffic and construction activities</li> </ul>
<b>Environment</b>	<ul style="list-style-type: none"> <li>• Environmental protection measures continue as part of active construction areas, no significant issues of concern</li> <li>• Design-Builder providing environmental submissions</li> <li>• Design-Builder continues work on Habitat Offsetting sites; weather dependent</li> <li>• Project is increasing its focus on some site issues, in particular localized fill erosion and elevated turbidity in watercourses</li> </ul>
<b>Safety</b>	<ul style="list-style-type: none"> <li>• COVID-19 screenings and physical distancing being followed for staff and visitors</li> <li>• Safety inspections ongoing</li> <li>• Two minor injuries reported</li> </ul>
<b>Design</b>	<ul style="list-style-type: none"> <li>• Ongoing development and review of Design-Builder detailed design</li> </ul>
<b>Construction</b>	<p>Segment 1 – River Road / Highway 17 Interchange</p> <ul style="list-style-type: none"> <li>• Pavement and barrier tie-in at Hwy 17 westbound (WB) River Road off-ramp</li> <li>• River Road electrical conduit installation</li> </ul> <p>Segment 2 – Highway 91C / Highway 17 Interchange</p> <ul style="list-style-type: none"> <li>• Preload removal in Sunbury west alignment, south of Segment 2 structure</li> <li>• Sand preload placement on south side of Hwy 91C completed</li> </ul> <p>Segment 3 – Highway 91C / Weigh Scale Interchange</p> <ul style="list-style-type: none"> <li>• Segment 3 structure girder installation</li> <li>• Utility and culvert installation works at Nordel/Weigh Scale intersection</li> </ul> <p>Segment 4 – Highway 91 / Nordel Way interchange</p> <ul style="list-style-type: none"> <li>• Nordel Way east lead installations</li> <li>• Nordel Way drilled shafts completed</li> </ul>
<b>Traffic Management</b>	<ul style="list-style-type: none"> <li>• Hwy 17 WB and eastbound (EB) nighttime slow lane closure</li> <li>• Nordel Way WB and EB nighttime lane closures</li> <li>• River Road at 96<sup>th</sup> Street lane closures</li> </ul>
<b>Quality</b>	<ul style="list-style-type: none"> <li>• Ongoing development / revising of quality documents (QMPs, QSPs, ITPs).</li> <li>• Starting development / assembling of Quality Turnover Packages</li> <li>• Ongoing auditing and site monitoring of Design-Builder</li> </ul>

### 3. PROJECT DELIVERY

#### Project Controls

<b>Completed this Month</b>	<ul style="list-style-type: none"> <li>• Ongoing project control meetings</li> <li>• Ongoing review of Risk Register</li> <li>• Ongoing review of project schedule, scope and budget</li> </ul>
<b>Key activities for Next 3 months</b>	<ul style="list-style-type: none"> <li>• Ongoing project control meetings</li> <li>• Ongoing review of Risk Register</li> <li>• Ongoing review of project schedule, scope and budget</li> </ul>

### 4. PROJECT DEVELOPMENT

#### Communications and Stakeholder Engagement

<b>Completed this Month</b>	<ul style="list-style-type: none"> <li>• Provided updates to interested stakeholder groups as requested</li> <li>• Reviewed Design-Builder communications submissions</li> <li>• Supported the Design-Builder with traffic and construction notifications to the public, community, and stakeholders</li> <li>• Ongoing Project website updates</li> <li>• Ongoing enquiry response</li> </ul>
<b>Key Activities for Next 3 months</b>	<ul style="list-style-type: none"> <li>• Continue to support the Design-Builder regarding upcoming traffic and construction notifications to the public, community and stakeholders</li> <li>• Ongoing enquiry response</li> <li>• Ongoing Project website updates</li> </ul>

#### Environment

<b>Completed this Month</b>	<ul style="list-style-type: none"> <li>• Ongoing regular weekly meetings with the Design-Builder regarding environmental components of the Project</li> <li>• Ongoing review of environmental reports and Project Site to ensure potential issues are being addressed</li> <li>• Environmental Work Plans continue to be received, reviewed and put into effect</li> <li>• Ongoing Design-Builder management of environment and permit obligations</li> <li>• Habitat offsetting/landscaping site work recommencing where sites are available and ready</li> </ul>
<b>Key Activities for Next 3 months</b>	<ul style="list-style-type: none"> <li>• Onsite environmental monitoring of the Design-Builder’s environmental mitigation measures to confirm compliance during construction</li> <li>• With expected increase in construction activity, potential increase to environmental site monitoring</li> <li>• Ongoing submission review in accordance with the Design-Build Agreement (DBA) requirements</li> <li>• Continue to monitor construction activities in the designated Sunbury contaminated waste area as it is completed</li> </ul>

## Agriculture

Completed this Month	<ul style="list-style-type: none"><li>No activity this month</li></ul>
Key activities for Next 3 months	<ul style="list-style-type: none"><li>Monitor construction to meet Agricultural Land Commission (ALC) conditions and proceed with any action items</li></ul>

## Indigenous Groups

Completed this Month	<ul style="list-style-type: none"><li>Ongoing review and sharing of key Project documents with Indigenous groups</li><li>Meetings ongoing with Design-Builder and Project team</li><li>Continued communication with Indigenous groups regarding Project construction activities</li><li>Contracting and employment opportunities for environmental monitoring ongoing</li></ul>
Key Activities for Next 3 months	<ul style="list-style-type: none"><li>Responses to Indigenous group comments on key Project documents</li><li>Ongoing consultation and engagement relating to geotechnical, environmental, and archaeological works</li></ul>

## 5. DESIGN BUILD PROGRESS

### Safety

Completed this Month	<ul style="list-style-type: none"><li>Pacific Gateway Constructors is the Prime Contractor on the Project Site</li><li>Onsite safety training sessions held for all staff</li><li>Ongoing COVID-19 protocol implementation</li></ul>
Key Activities for Next 3 months	<ul style="list-style-type: none"><li>Construction activities and ongoing site safety training sessions as required</li><li>Daily &amp; weekly safety briefings for active site crews</li><li>Monthly mass safety meetings</li><li>Ongoing COVID-19 protocol implementation</li></ul>
Safety Incidents	<ul style="list-style-type: none"><li>One first aid incident and 2 property damage incidents on site</li></ul>

### Design

Completed this Month	<ul style="list-style-type: none"><li>Ongoing meetings with various regulatory agencies/stakeholders</li><li>Ongoing review of Project-wide guide sign designs</li><li>Review and discussion of Project turnover packages</li></ul>
Key Activities for Next 3 months	<ul style="list-style-type: none"><li>Review Design-Builder Records Documentation/Turnover Packages</li><li>Review of remaining guide sign designs</li><li>Ongoing meetings with various regulatory agencies/stakeholders as required</li></ul>

## Construction

<p><b>Completed this Month</b></p>	<p><b>Segment 1 – River Road / Highway 17 Interchange</b></p> <ul style="list-style-type: none"> <li>• Pavement and barrier tie-in at Hwy 17 westbound (WB) River Road off-ramp</li> <li>• River Road electrical conduit installation</li> <li>• River Road and 96<sup>th</sup> Street intersection curbing and paving</li> </ul> <p><b>Segment 2 – Highway 91C / Highway 17 Interchange</b></p> <ul style="list-style-type: none"> <li>• Ongoing Tilbury contaminated soil excavation North of 96<sup>th</sup> Street</li> <li>• Ongoing Hwy 17 structure deck pour preparation</li> <li>• Preload removal in Sunbury west alignment, south of Segment 2 structure</li> <li>• Sand preload placement on south side of Hwy 91C completed</li> </ul> <p><b>Segment 3 – Highway 91C / Weigh Scale Interchange</b></p> <ul style="list-style-type: none"> <li>• Segment 3 structure girder installation</li> <li>• Utility and culvert installation works at Nordel/Weigh Scale intersection</li> </ul> <p><b>Segment 4 – Highway 91 / Nordel Way interchange</b></p> <ul style="list-style-type: none"> <li>• Nordel Way east lead installations</li> <li>• Nordel Way drilled shafts completed</li> <li>• Gravel placement on Hwy 91 west and base/intermediate paving</li> </ul>
<p><b>Key Activities for Next 3 months</b></p>	<p><b>Segment 1 – River Road / Highway 17 Interchange</b></p> <ul style="list-style-type: none"> <li>• Guide sign installation</li> <li>• Top lift paving on Hwy 17 east side of new structure</li> <li>• River Road top lift pavement</li> </ul> <p><b>Segment 2 – Highway 91C / Highway 17 Interchange</b></p> <ul style="list-style-type: none"> <li>• Segment 2 structure deck pour</li> <li>• Excavation and construction of Hwy 17 west ramp, east of box culvert</li> </ul> <p><b>Segment 3 – Highway 91C / Weigh Scale Interchange</b></p> <ul style="list-style-type: none"> <li>• Nordel Way at Weigh Scale Road intersection construction</li> <li>• Weigh Scale structure construction</li> <li>• Roundabout construction</li> </ul> <p><b>Segment 4 – Nordel Way / Highway 91 Interchange</b></p> <ul style="list-style-type: none"> <li>• Nordel way cross culvert and widening of Nordel Way structure columns and pier cap construction</li> <li>• Preload removal in southeast quadrant of Nordel interchange</li> <li>• Embankment fill on east side of Hwy 91</li> </ul>

## Traffic Management

<p><b>Completed this Month</b></p>	<ul style="list-style-type: none"> <li>• Hwy 17 WB and eastbound nighttime slow lane closure</li> <li>• Nordel Way WB and EB nighttime lane closures</li> <li>• River Road at 96<sup>th</sup> Street lane closures</li> </ul>
<p><b>Key Activities for Next 3 months</b></p>	<ul style="list-style-type: none"> <li>• Nighttime lane closures Hwy 17 EB, WB, and Hwy 91C</li> <li>• Nighttime lane closures Nordel way to Hwy 91SB on-ramp</li> <li>• Weekend day and night closures Hwy 91 SB slow lane</li> </ul>

- 
- Weekend day and night closures Hwy 17 EB and WB slow lanes
- 

## Quality

<b>Completed this Month</b>	<ul style="list-style-type: none"><li>• Ongoing monitoring of quality management system</li><li>• Development/assembling of Quality Turnover Packages</li><li>• Ongoing auditing and site monitoring of the Design-Builder</li></ul>
<b>Key Activities for Next 3 months</b>	<ul style="list-style-type: none"><li>• Ongoing implementation and monitoring of quality management system</li><li>• Ongoing quality audits</li><li>• Development/assembling of Quality Turnover Packages</li></ul>



## 6. Milestones Achieved Date

The milestone dates shown in DBA Schedule 3 Appendix A have been updated in the April 2022 Works Schedule submitted by the Design-Builder as follows:

Activity Name	DBA Milestone Date:	Milestone Date (April 2022 Works Schedule)
<b>Construction Start</b>		
Highway 91 / Nordel Way Interchange	April 6, 2020	June 16, 2020
Delta Nature Reserve Boardwalk	July 2, 2020	September 28, 2020
Highway 91C / Weigh Scale Interchange	April 6, 2020	August 14, 2020
Highway 91C/ Highway 17 Interchange	April 6, 2020	July 12, 2020
Highway 17 / River Road Interchange	April 6, 2020	May 8, 2020
<b>Construction Complete</b>		
Highway 91 / Nordel Way Interchange	September 15, 2022	November 23, 2022
Delta Nature Reserve Boardwalk	October 6, 2020	March 8, 2021
Highway 91C / Weigh Scale Interchange	March 15, 2023*	November 15, 2022
Highway 91C/ Highway 17 Interchange	March 15, 2023*	November 18, 2022
Highway 17 / River Road Interchange	October 4, 2021	December 2, 2021
Substantial Completion Date	<i>November 30, 2022</i>	<i>November 29, 2022</i>
Total Completion Date	<i>May 31, 2023</i>	<i>May 8, 2023</i>

\* Deferred completion date for limited alignments; majority of Section complete for November 30, 2022

Non-conforming Milestone dates and corrective actions to address schedule delays are under discussion with the Design-Builder.

## 7. Site Photographs



S2 – Sunbury Underpass west – Pier diaphragm, MSE Wall, jump span. Taken April 14, 2022



S1 – 96<sup>th</sup> Street at River Road – Top lift asphalt paved. Taken April 20, 2022



S3 – Cellular concrete pour in-progress. Taken April 20, 2022



S2 – Sunbury Underpass west – Deck rebar install, E MSE Wall. Taken April 22, 2022



S3 – Westside overpass girder erection. Taken April 23, 2022



S3 – Nordel Underpass. Taken April 26, 2022

## 8. Project Cost Report

- To date, \$181.1 million has been spent on the Project
- The approved capital Project budget is \$260 million