

Highway 91/17 Upgrade Project

MONTHLY STATUS REPORT

Month Ending November 30, 2021

1. PROJECT DASHBOARD

| Project Delivery Objectives | | Overall Project | DB Contractor | Owners/Other Works | Comments |
|-------------------------------|----------------------------------------------------------------------------------------------------------------------------------------------------------------------------|-----------------|---------------|--------------------|----------------------------------------------------------------------------------------------------------------------------------------------|
| Safety | Take every reasonable step to ensure that the work is performed safely and in compliance with all applicable safety regulations, and in accordance with government policy. | ● | ● | ● | Safety meetings and orientations ongoing. |
| Budget | Delivered within the approved budget. | ● | ● | ● | The Project has an approved capital budget of \$260 million and continues to track on budget. |
| Schedule | Delivered within the approved schedule. | ● | ● | ● | Most key Project activities are proceeding on schedule. Working to mitigate schedule impacts; evaluating implication of November storm event |
| Scope | Deliver the approved scope. | ● | ● | ● | Delivery of the specified components is on track. |
| Indigenous Groups | Continue to build and maintain a positive collaborative working relationship | ● | ● | ● | Discussions and consultation with Indigenous groups ongoing. |
| Environmental | Ensure the work is performed in an environmentally responsible manner. | ● | ● | ● | The Project will be delivered in accordance with the obligations identified in the Construction Environment Management Plan. |
| Community Benefits | Incorporate the Community Benefits Objectives into the Project. | ● | ● | ● | Community Benefits Objectives outlined in the Design-Build Agreement for implementation by the Design-Builder. |
| Third Parties | Continue to build and maintain positive relationships with Project Partners and other third parties. | ● | ● | ● | Early and frequent engagement and advancing agreements with Project partners and other third parties. |
| Stakeholder Engagement | Continue to build and maintain positive relationships with the community, and other stakeholders. | ● | ● | ● | Engagement with key Project partners is ongoing. Community and stakeholder engagement will continue. |
| Quality | Implement and Maintain an effective Quality Management System. | ● | ● | ● | Quality audits and reviews performed as required per the Quality Management Plan. |

| Status | Description |
|--------|-------------------------------------------------------------------------|
| ● | Not currently applicable, as the Owner's Works are complete |
| ● | Managing some issues, negotiating resolution; required immediately |
| ● | Managing some issues, negotiating resolution; required in the near term |
| ● | Good progress |

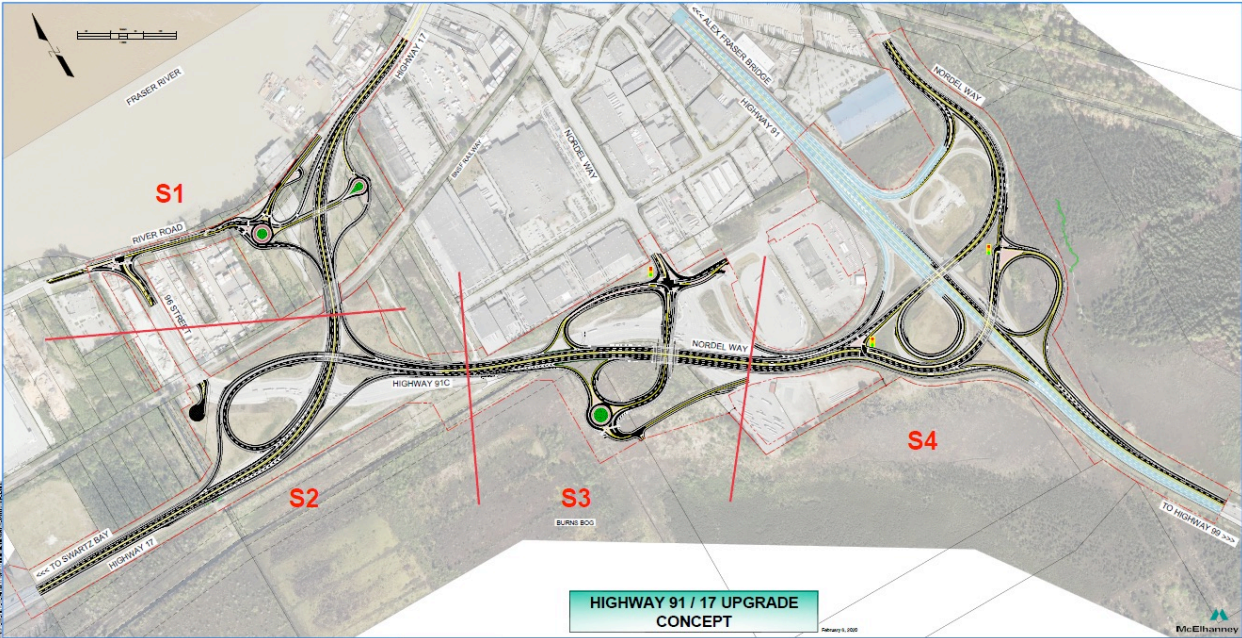
2. Introduction

Project Overview

The Highway 91/17 & Deltaport Way Upgrade Project (the Program) is comprised of the Highway 91/17 Upgrade Project, as well as the 27B Avenue and Deltaport Way Improvements Project. The 27B Avenue and Deltaport Way improvements were completed in 2019 and are no longer be reported out on in the monthly reports.

The Highway 91/17 Upgrade Project (the Project) is a subcomponent project of the broader Program and includes a combination of improvements to the existing Highway 91, Highway 17, and Highway 91 Connector corridors to improve travel safety and efficiency. These upgrades will improve local and commercial travel time and reliability in the area, reduce conflicts between commercial vehicles and other traffic, and support community and economic development. The Highway 91/17 components also complement the recently completed 72nd Avenue Interchange Project and the Alex Fraser Bridge Project.

A Design-Build Agreement between the BC Ministry of Transportation and Infrastructure (the Ministry), the BC Transportation Financing Authority (BCTFA), and Pacific Gateway Constructors General Partnership (the Design-Builder) was signed on December 13, 2019. As such, the Project has entered the implementation phase and a comprehensive Monthly Status Report will be prepared to report on progress, budget status, and risk.



November 2021 Highlights

Project highlights this month include:

| | |
|-------------------------------|---------------------------------------------------------------------------------------------------------------------------------------------------------------------------------------------------------------------------------------------------------------------------------------------------------------------------------------------------------------------------------------------------------------------------------------------------------------------------------------------------------------------------------------------------------------------------------------------------------------------------------------------------------------------------------------------------------------------------------------------------------------------------------------|
| Stakeholder Engagement | <ul style="list-style-type: none"> Ongoing public and stakeholder notification to advise of Project activities including upcoming traffic and construction activities |
| Environment | <ul style="list-style-type: none"> Environmental protection measures continue as part of active construction areas Restoration of environmental protection measures following November storm event Design-Builder providing environmental submissions Design-Builder initiated work on Habitat Offsetting sites Ongoing management of archaeological materials and sites |
| Safety | <ul style="list-style-type: none"> COVID-19 screenings and physical distancing being followed for staff and visitors Safety inspections ongoing |
| Design | <ul style="list-style-type: none"> Ongoing development and review of Design-Builder detailed design |
| Construction | <p>Segment 1 – River Road / Highway 17 Interchange</p> <ul style="list-style-type: none"> Tear drop concrete pad and sidewalk work complete Columns installation for future guide signs at interchange <p>Segment 2 – Highway 91C / Highway 17 Interchange</p> <ul style="list-style-type: none"> Hwy 17 structure column and pier cap installation Hwy 17/Hwy 91C intersection temporary lights installation <p>Segment 3 – Highway 91C / Weigh Scale Interchange</p> <ul style="list-style-type: none"> Hwy 91C north sand embankment completed <p>Segment 4 – Highway 91 / Nordel Way interchange</p> <ul style="list-style-type: none"> Nordel Way structure embankment west side of Hwy 91 ongoing |
| Traffic Management | <ul style="list-style-type: none"> Hwy 17 westbound (WB) and EB nighttime slow lane closure. Hwy 91C WB nighttime slow lane closures |
| Quality | <ul style="list-style-type: none"> Ongoing implementation and review of quality system |

3. PROJECT DELIVERY

Project Controls

| | |
|-----------------------------|-------------------------------------------------------------------------------------------------------------------------------------------------------------------------------------------|
| Completed this Month | <ul style="list-style-type: none"> Ongoing project control meetings Ongoing review of Risk Register Ongoing review of project schedule, scope and budget |
|-----------------------------|-------------------------------------------------------------------------------------------------------------------------------------------------------------------------------------------|

| | |
|-----------------------------------------|-------------------------------------------------------------------------------------------------------------------------------------------------------------------------------------------------|
| Key activities for Next 3 months | <ul style="list-style-type: none"> • Ongoing project control meetings • Ongoing review of Risk Register • Ongoing review of project schedule, scope and budget |
|-----------------------------------------|-------------------------------------------------------------------------------------------------------------------------------------------------------------------------------------------------|

4. PROJECT DEVELOPMENT

Communications and Stakeholder Engagement

| | |
|-----------------------------------------|------------------------------------------------------------------------------------------------------------------------------------------------------------------------------------------------------------------------------------------------------------------------------------------------------------------------------------------------------------------------------------------------|
| Completed this Month | <ul style="list-style-type: none"> • Provided updates to interested stakeholder groups as requested • Reviewed Design-Builder communications submissions • Supported the Design-Builder with traffic and construction notifications to the public, community, and stakeholders • Ongoing Project website updates • Ongoing enquiry response |
| Key Activities for Next 3 months | <ul style="list-style-type: none"> • Continue to support the Design-Builder regarding upcoming traffic and construction notifications to the public, community and stakeholders • Ongoing enquiry response • Ongoing Project website updates |

Environment

| | |
|-----------------------------------------|-------------------------------------------------------------------------------------------------------------------------------------------------------------------------------------------------------------------------------------------------------------------------------------------------------------------------------------------------------------------------------------------------------------------------------------------------------------------------------------------------------------------------------------|
| Completed this Month | <ul style="list-style-type: none"> • On-going regular weekly meetings with the Design-Builder regarding environmental components of the Project • Environmental Work Plans continue to be received, reviewed and put into effect • PGC continue to manage the environment and permit obligations, including assessing and addressing any issues resulting from the November storm event • Habitat Offsetting/Landscaping site work continues in specific areas, most notably in Section 1 |
| Key Activities for Next 3 months | <ul style="list-style-type: none"> • On-site environmental monitoring of the Design-Builder's environmental mitigation measures to confirm compliance during construction • Continued assessment and mitigation of issues resulting from the November storm event • On-going submission review in accordance with the DBA requirements. |

Agriculture

| | |
|-----------------------------------------|------------------------------------------------------------------------------------------------------------------------------------------------------------------|
| Completed this Month | <ul style="list-style-type: none"> • Design-Builder sourcing and reviewing off-site peat material, in particular near sensitive bog locations |
| Key activities for Next 3 months | <ul style="list-style-type: none"> • Monitor construction to meet Agricultural Land Commission (ALC) conditions and proceed with any action items |

Indigenous Groups

| | |
|----------------------------------|-----------------------------------------------------------------------------------------------------------------------------------------------------------------------------------------------------------------------------------------------------------------------------------------------------------------------------------------------------------------------------------------|
| Completed this Month | <ul style="list-style-type: none">• Ongoing review and sharing of key Project documents with Indigenous Groups• Meetings ongoing with Design-Builder and Project team• Continued communication with Indigenous groups regarding Project construction activities• Contracting and employment opportunities for environmental monitoring ongoing |
| Key Activities for Next 3 months | <ul style="list-style-type: none">• Responses to Indigenous Group comments on key Project documents• On-going consultation and engagement relating to geotechnical, environmental, and archaeological works |

5. DESIGN-BUILD PROGRESS

Safety

| | |
|----------------------------------|-----------------------------------------------------------------------------------------------------------------------------------------------------------------------------------------------------------------------------------------------------------------------------------------------|
| Completed this Month | <ul style="list-style-type: none">• Pacific Gateway Constructors is the Prime Contractor on the Project Site• Onsite safety training sessions held for all staff• Ongoing COVID-19 protocol implementation |
| Key Activities for Next 3 months | <ul style="list-style-type: none">• Construction activities and ongoing site safety training sessions as required• Daily & weekly safety briefings for active site crews• Monthly mass safety meetings• Ongoing COVID-19 protocol implementation |
| Safety Incidents | <ul style="list-style-type: none">• None this month |

Design

| | |
|----------------------------------|--------------------------------------------------------------------------------------------------------------------------------------------------------------------------------------------------------------------------------------------------------------------------------------------------------------------------------------------|
| Completed this Month | <ul style="list-style-type: none">• Ongoing meetings with various regulatory agencies/stakeholders• Continued development and review of design including detour implementation, landscape, drainage, roadway, electrical, structural, and bridge design• Ongoing review of Project-wide guide sign designs |
| Key Activities for Next 3 months | <ul style="list-style-type: none">• Ongoing review of design submissions• Ongoing meetings with various regulatory agencies/stakeholders |

Construction

| | |
|----------------------|---------------------------------------------------------------------------------------------------------------------------------------------------------------------------------------------------------------------------------------------------------------------------------------------------------------------------------------------------------------------------------------------------------------------------------------|
| Completed this Month | Segment 1 – River Road / Highway 17 Interchange <ul style="list-style-type: none">• River Road east roundabout gravelling and guide signs installation in preparation for November Hwy 17 eastbound (EB) ramp opening• Hwy 17 west paving and line painting• Tear drop roundabout concrete pad and sidewalk work complete• Columns installation for future guide signs at interchange |
|----------------------|---------------------------------------------------------------------------------------------------------------------------------------------------------------------------------------------------------------------------------------------------------------------------------------------------------------------------------------------------------------------------------------------------------------------------------------|

| | |
|------------------------------------------------|--------------------------------------------------------------------------------------------------------------------------------------------------------------------------------------------------------------------------------------------------------------------------------------------------------------------------------------------------------------------------------------------------------------------------------------------------------------------------------------------------------------------------------------------------------------------------------------------------------------------------------------------------------------------------------------------------------------------------------------------------------------------------------------------------------------------------------------------------------------------------------------------------------------------------------------------------------------------------------------------------------------------------------------------------------------------------------------------------------------------------------------------------------------------------------------------------------------------------------------------------------------------------------------|
| | <p>Segment 2 – Highway 91C / Highway 17 Interchange</p> <ul style="list-style-type: none"> • Embankment fill on Sunbury east alignment on north side of Hwy 17 ongoing • Hwy 17 structure column and pier cap installation • Hwy 17/Hwy 91C intersection temporary lights installation <p>Segment 3 – Highway 91C / Weigh Scale Interchange</p> <ul style="list-style-type: none"> • Hwy 91C north sand embankment completed • Sand preload removal on south side of Hwy 91C ongoing • Drainage works along Hwy 91C north <p>Segment 4 – Highway 91 / Nordel Way interchange</p> <ul style="list-style-type: none"> • Nordel Way structure embankment west side of Hwy 91 ongoing |
| <p>Key Activities for Next 3 months</p> | <p>Segment 1 – River Road / Highway 17 Interchange</p> <ul style="list-style-type: none"> • River Road east roundabout completion and open to traffic • Paving and opening of Hwy 17 west ramp with signal • Temporary traffic signals on Hwy 17 WB <p>Segment 2 – Highway 91C / Highway 17 Interchange</p> <ul style="list-style-type: none"> • Preload of Sunbury East alignment on North and South sides of Hwy 17 • Structure columns installation and girder installation with full detour of Hwy 17 • Hwy 17/Hwy 91C interchange detour implementation • Full closure of 96th Street <p>Segment 3 – Highway 91C / Weigh Scale Interchange</p> <ul style="list-style-type: none"> • Hwy 91C EB to Hwy 17 detour implementation • Weigh Scale structure construction <p>Segment 4 – Nordel Way / Highway 91 Interchange</p> <ul style="list-style-type: none"> • Completion of Hwy 91 east side embankment • Sand preload removal and commence drilled shafts of Nordel Way structure • Preload removal in southeast quadrant of Nordel interchange • Embankment fill on east side of Hwy 91 |

Traffic Management

| | |
|------------------------------------------------|-----------------------------------------------------------------------------------------------------------------------------------------------------------------------------------------------------------------------------------------------------------------------------------------------------------------------------------------------|
| <p>Completed this Month</p> | <ul style="list-style-type: none"> • Hwy 91 SB to Nordel Way EB offramp closures • Hwy 17 WB nighttime slow lane closure • Hwy 91C WB nighttime slow lane closures |
| <p>Key Activities for Next 3 months</p> | <ul style="list-style-type: none"> • Nighttime lane closures Hwy 17 EB, WB and Hwy 91C • Nighttime lane closures Nordel way to Hwy 91SB on ramp for Hwy 91 west side construction • Weekend day and night closures Hwy 91 SB slow lane • Weekend day and night closures Hwy 17 EB and WB slow lanes |

Quality

| | |
|-----------------------------------------|--------------------------------------------------------------------------------------------------------------------------------------------------------|
| Completed this Month | <ul style="list-style-type: none">• Ongoing monitoring of quality management system• Ongoing quality audits with Design-Builder |
| Key Activities for Next 3 months | <ul style="list-style-type: none">• Ongoing implementation and monitoring of quality management system• Ongoing quality audits |

6. Milestones Achieved Date

The milestone dates shown in DBA Schedule 3 Appendix A have been updated in the November 2021 Works Schedule submitted by the Design-Builder as follows:

| Activity Name | DBA Milestone Date: | Milestone Date (November 2021 Works Schedule) |
|---------------------------------------|---------------------|-----------------------------------------------|
| Construction Start | | |
| Highway 91 / Nordel Way Interchange | April 6, 2020 | June 16, 2020 |
| Delta Nature Reserve Boardwalk | July 2, 2020 | N/A |
| Highway 91C / Weigh Scale Interchange | April 6, 2020 | August 14, 2020 |
| Highway 91C/ Highway 17 Interchange | April 6, 2020 | July 12, 2020 |
| Highway 17 / River Road Interchange | April 6, 2020 | May 8, 2020 |
| Construction Complete | | |
| Highway 91 / Nordel Way Interchange | September 15, 2022 | November 28, 2022 |
| Delta Nature Reserve Boardwalk | October 6, 2020 | March 8, 2021 |
| Highway 91C / Weigh Scale Interchange | March 15, 2023* | November 30, 2022 |
| Highway 91C/ Highway 17 Interchange | March 15, 2023* | November 10, 2022 |
| Highway 17 / River Road Interchange | October 4, 2021 | December 2, 2021 |
| Substantial Completion Date | November 30, 2022 | November 30, 2022 |
| Total Completion Date | May 31, 2023 | May 25, 2023 |

* Deferred completion date for limited alignments; majority of Section complete for November 30, 2022

Non-conforming Milestone dates and corrective actions to address schedule delays are under discussion with the Design-Builder.

7. Site Photographs



S1: East roundabout - concrete apron rebar install. Taken November 2, 2021



S1: Road base placement. Taken November 9, 2021



S2: Sunbury structure west - Drilled shaft rebar cage. Taken November 13, 2021



S4 Interface with Burns Bog Delta Nature Reserve. Taken November 17, 2021



S2: Sunbury structure east - Pier cap rebar install. Taken November 25, 2021



S1: A portion of line painting completed. Taken November 30, 2021

8. Project Cost Report

- To date, \$158.4 million has been spent on the Project
- The approved capital Project budget is \$260 million