

Highway 91/17 Upgrade Project

MONTHLY STATUS REPORT

Month Ending November 30, 2020

1. PROJECT DASHBOARD

Project Delivery Objectives		Overall Project	DB Contractor	Owners/Other Works	Comments
Safety	Take every reasonable step to ensure that the work is performed safely and in compliance with all applicable safety regulations, and in accordance with government policy.	●	●	●	Safety meetings and orientations ongoing.
Budget	Delivered within the approved budget.	●	●	●	The Project has an approved capital budget of \$260 million and continues to track on budget.
Schedule	Delivered within the approved schedule.	●	●	●	Most key Project activities are proceeding on schedule. Working with Design-Builder to mitigate schedule impacts
Scope	Deliver the approved scope.	●	●	●	Delivery of the specified components is on track.
Indigenous Groups	Continue to build and maintain a positive collaborative working relationship	●	●	●	Discussions and consultation with Indigenous groups ongoing.
Environmental	Ensure the work is performed in an environmentally responsible manner.	●	●	●	The Project will be delivered in accordance with the obligations identified in the Overview Environmental Effects Assessment.
Community Benefits	Incorporate the Community Benefits Objectives into the Project.	●	●	●	Community Benefits Objectives outlined in the Design-Build Agreement for implementation by the Design-Builder.
Third Parties	Continue to build and maintain positive relationships with Project Partners and other third parties.	●	●	●	Early and frequent engagement and advancing agreements with Project partners and other third parties.
Stakeholder Engagement	Continue to build and maintain positive relationships with the community, and other stakeholders.	●	●	●	Engagement with key Project partners is ongoing. Community and stakeholder engagement will continue.
Quality	Implement an effective Quality Management System.	●	●	●	Quality audits and reviews performed as required per the Quality Management Plan.

Status	Description
●	Not currently applicable, as the Project is in Procurement Phase
●	Managing some issues, negotiating resolution; required immediately
●	Managing some issues, negotiating resolution; required in the near term
●	Good progress

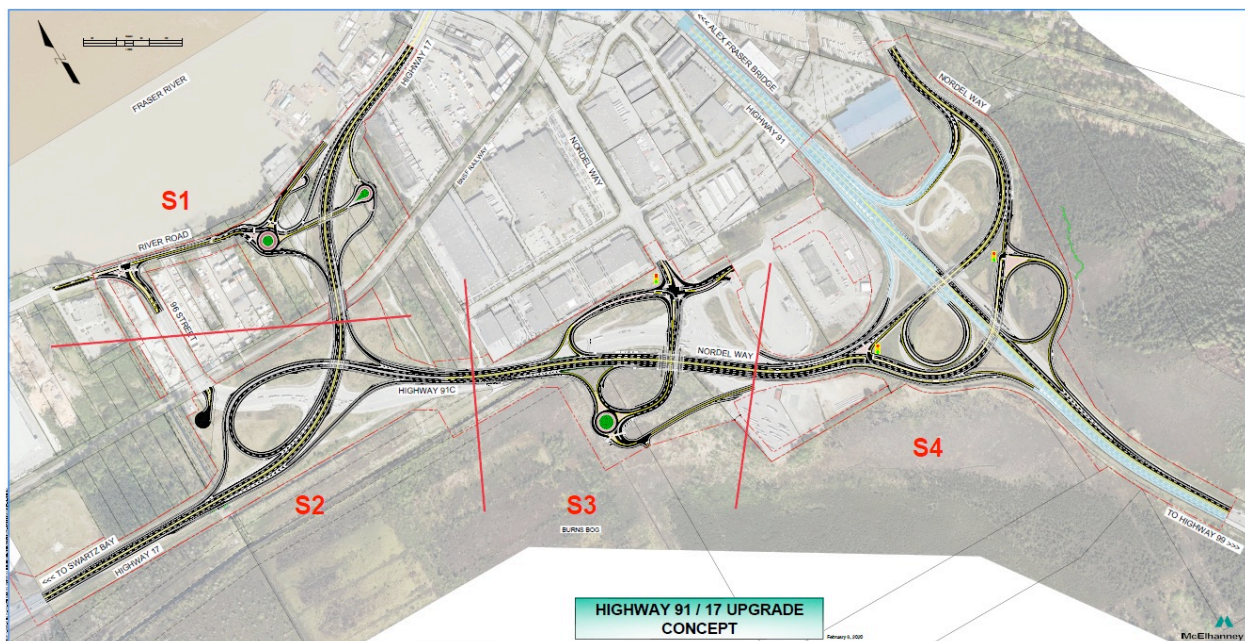
2. Introduction

Project Overview

The Highway 91/17 & Deltaport Way Upgrade Project (the Program) is comprised of the Highway 91/17 Upgrade Project, as well as the 27B Avenue and Deltaport Way Improvements Project. The 27B Avenue and Deltaport Way improvements have been completed and will no longer be reported out on in subsequent monthly reports.

The Highway 91/17 Upgrade Project (the Project) is a subcomponent project of the broader Program and includes a combination of improvements to the existing Highway 91, Highway 17, and Highway 91 Connector corridors to improve travel safety and efficiency. These upgrades will improve local and commercial travel time and reliability in the area, reduce conflicts between commercial vehicles and other traffic, and support community and economic development. The Highway 91/17 components also complement the recently completed 72nd Avenue Interchange Project and the Alex Fraser Bridge Project.

A Design-Build Agreement between the BC Ministry of Transportation and Infrastructure (the Ministry), the BC Transportation Financing Authority (BCTFA), and Pacific Gateway Constructors General Partnership (the Design-Builder) was signed on December 13, 2019.



November 2020 Highlights

Project highlights this month include:

Stakeholder Engagement	<ul style="list-style-type: none"> Ongoing public and stakeholder notification to advise of Project activities including upcoming traffic and construction activities
Environment	<ul style="list-style-type: none"> Environmental protection measures continue as part of increased active construction, including at Hwy 91/Nordel Interchange. Design-Builder providing environmental submissions Habitat Offsetting plans submitted
Safety	<ul style="list-style-type: none"> Social distancing being followed for the staff required to work in the field
Design	<ul style="list-style-type: none"> Ongoing development and review of Design-Builder detailed design
Construction	<p>Segment 1 – River Road / Highway 17 Interchange</p> <ul style="list-style-type: none"> River Road West – Watermain installation completed River Road East – Hwy 17 detour implemented River Road East excavation of existing Hwy 17 alignment ongoing for construction of future structure <p>Segment 2 – Highway 91C / Highway 17 Interchange</p> <ul style="list-style-type: none"> Retaining wall construction on north side of Hwy 91C. <p>Segment 3 – Highway 91C / Weigh Scale Interchange</p> <ul style="list-style-type: none"> Stone columns and wick drain installation on Weigh Scale Interchange roundabout Excavation on Fortis BC Right-of-Way (ROW) in preparation for cellular concrete placement <p>Segment 4 – Highway 91 / Nordel Way interchange</p> <ul style="list-style-type: none"> Delta Nature Reserve (DNR) boardwalk relocation ongoing
Traffic Management	<ul style="list-style-type: none"> Hwy 91 Southbound (SB) to Nordel Way Eastbound (EB) offramp closures Hwy 17 Westbound (WB) nighttime slow lane closure. Hwy 91C WB nighttime slow lane closures.
Quality	<ul style="list-style-type: none"> Ongoing implementation and review of quality system

3. PROJECT DELIVERY

Project Controls

Completed this Month	<ul style="list-style-type: none"> Regular project control meetings Ongoing review of Risk Register Confirmed schedule mitigation strategy with Design-Builder
Key activities for Next 3 months	<ul style="list-style-type: none"> Ongoing project control meetings Ongoing review of Risk Register Ongoing review of project schedule, scope and budget

4. PROJECT DEVELOPMENT

Communications and Stakeholder Engagement

Completed this Month	<ul style="list-style-type: none">• Provided updates to interested stakeholder groups as requested• Reviewed contractor communications submittals• Ongoing enquiry response• Supported the Design-Builder with stakeholder engagement and public communications including the Highway 99 preload removal work
Key Activities for Next 3 months	<ul style="list-style-type: none">• Ongoing support to the Design-Builder for stakeholder engagement and public communications including the Delta Nature Reserve Boardwalk relocation work and Nordel Truck Parking Area relocation• Continue to update Project webpage• Ongoing enquiry response• Convene third Traffic Advisory Committee meeting

Environment

Completed this Month	<ul style="list-style-type: none">• Ongoing regular weekly meetings with the Design-Builder regarding environmental components of the Project• Ongoing securing, extension, and amendment of environmental/archaeological permits• Numerous Environmental Work Plans received and implemented
Key Activities for Next 3 months	<ul style="list-style-type: none">• Securing, extension, and amendment of environmental/archaeological permits as required• Address concerns at construction interface locations at the Delta Nature Reserve• Ongoing environmental oversight of Design-Builder's environmental mitigation measures• Ongoing submission review in accordance with the DBA requirements

Agriculture

Completed this Month	<ul style="list-style-type: none">• Design-Builder and Project Agrologist engaged in ongoing discussion as design evolves for Hwy 91/Nordel interchange and possible peat/sand excavation• Agrologist engaged local farmers to determine interest in surplus material
Key activities for Next 3 months	<ul style="list-style-type: none">• Construction methodology to be finalized and potential surplus material to be identified• Determine any requirements to meet Agricultural Land Commission conditions and proceed with action items

Indigenous Groups

Completed this Month	<ul style="list-style-type: none">• Ongoing review and sharing of key project documents with Indigenous Groups• Meetings ongoing with Design-Build contractor and Project team
-----------------------------	---

	<ul style="list-style-type: none"> Continued communication with Indigenous groups regarding Project construction activities
Key Activities for Next 3 months	<ul style="list-style-type: none"> Responses to Indigenous Group comments on key Project documents On-going consultation and engagement relating to geotechnical, environmental, and archaeological works

5. DESIGN BUILD PROGRESS

Safety

Completed this Month	<ul style="list-style-type: none"> Pacific Gateway Constructors is the Prime Contractor on the Project Site Onsite safety training sessions held for all Project staff
Key Activities for Next 3 months	<ul style="list-style-type: none"> Construction activities and ongoing site safety training sessions as required Daily & weekly safety briefings for active site crews Monthly mass safety meetings
Safety Incidents	<ul style="list-style-type: none"> 1 minor injury Minor equipment incidents on site

Design

Completed this Month	<ul style="list-style-type: none"> Ongoing meetings with various regulatory agencies/stakeholders Continued development and review of design including, detour implementation, oversized vehicle accommodation, drainage, roadway, electrical, and bridge design Issued for Construction (IFC) Designs being received and reviewed Ongoing discussions around design mitigations in and around the Delta Nature Reserve
Key Activities for Next 3 months	<ul style="list-style-type: none"> Ongoing review of design submissions Ongoing meetings with various regulatory agencies/stakeholders

Construction

Completed this Month	<p>Segment 1 – River Road / Highway 17 Interchange</p> <ul style="list-style-type: none"> River Road West – Watermain installation completed River Road West – embankment fill ongoing on ramps and roundabout River Road East – Hwy 17 detour implemented River Road East – excavation of existing Hwy 17 alignment ongoing for construction of future structure <p>Segment 2 – Highway 91C / Highway 17 Interchange</p> <ul style="list-style-type: none"> Embankment fill on L500 and L550 alignments ongoing on north side of Hwy 91C Retaining wall construction on north side of Hwy 91C
-----------------------------	--

	<p>Segment 3 – Highway 91C / Weigh Scale Interchange</p> <ul style="list-style-type: none"> • Stone columns and wick drain installation on Weigh Scale interchange roundabout • Excavation on Fortis BC ROW in preparation for cellular concrete placement in December • Nordel Truck Parking utility work complete <p>Segment 4 – Nordel Way / Highway 91 Interchange</p> <ul style="list-style-type: none"> • DNR boardwalk work ongoing • Hwy 91 SB > Nordel Way EB detour implemented, and embankment fill ongoing • Sand embankment ongoing in south east quadrant
<p>Key Activities for Next 3 months</p>	<p>Segment 1 – River Road / Highway 17 Interchange</p> <ul style="list-style-type: none"> • Preload of Hwy 17 / River Road on-/off-ramp roundabout areas • River Road utility relocation construction ongoing • Excavation for the future River Road structure ongoing, and stone column construction <p>Segment 2 – Highway 91C / Highway 17 Interchange</p> <ul style="list-style-type: none"> • Preload of new alignments on north side of Hwy 91C ongoing • Drainage construction in 96th Street ditch completed <p>Segment 3 – Highway 91C / Weigh Scale Interchange</p> <ul style="list-style-type: none"> • Preload north side of Hwy 91C ongoing. • Detour implementation – Intersection of Hwy 91C and truck parking relocation • Preload south side of Hwy 91C at Weigh Scale interchange roundabout • Stone column construction at future Weigh Scale Rd structure <p>Segment 4 – Nordel Way / Highway 91 Interchange</p> <ul style="list-style-type: none"> • Hwy 91C EB > Hwy 91 SB on-ramp clearing and grubbing • Wildlife salvage in south west quadrant of Nordel Interchange • Preload placement in south east quadrant of Nordel interchange • DNR boardwalk construction completion

Traffic Management

<p>Completed this Month</p>	<ul style="list-style-type: none"> • Hwy 91 SB to Nordel Way EB off-ramp closures • Nighttime Hwy 17 WB slow lane closures • Nighttime Hwy 91C WB slow lane closures
<p>Key Activities for Next 3 months</p>	<ul style="list-style-type: none"> • Nighttime lane closures Hwy 17 EB, WB, and Hwy 91C • Nighttime lane closures on ramp for Hwy 91C EB > Hwy 91 SB on-ramp construction • Pending approvals of work plans, preload activities anticipated in all segments

Quality

Completed this Month	<ul style="list-style-type: none"> Ongoing monitoring of quality management system Ongoing quality audits with Design-Builder with identification of Opportunities for Improvements and Corrective Actions
Key Activities for Next 3 months	<ul style="list-style-type: none"> Ongoing implementation and monitoring of quality management system Ongoing quality audits

6. Milestones Achieved Date

The milestone dates shown in DBA Schedule 3 Appendix A have been updated in the November 2020 Works Schedule submitted by the Design-Builder as follows:

Activity Name	Milestone Date	Actual Start / Completion Forecast Start / Completion
Construction Start		
Highway 91 / Nordel Way Interchange	April 6, 2020	June 16, 2020
Delta Nature Reserve Boardwalk	July 2, 2020	October 6, 2020
Highway 91C / Weigh Scale Interchange	April 6, 2020	August 14, 2020
Highway 91C/ Highway 17 Interchange	April 6, 2020	July 12, 2020
Highway 17 / River Road Interchange	April 6, 2020	May 8, 2020
Construction Complete		
Highway 91 / Nordel Way Interchange	September 15, 2022	<i>November 18, 2022</i>
Delta Nature Reserve Boardwalk	October 6, 2020	<i>January 13, 2021</i>
Highway 91C / Weigh Scale Interchange	March 15, 2023*	<i>September 15, 2022</i>
Highway 91C/ Highway 17 Interchange	March 15, 2023*	<i>November 17, 2022</i>
Highway 17 / River Road Interchange	October 4, 2021	<i>November 3, 2021</i>
Substantial Completion Date	November 30, 2022	<i>November 18, 2022</i>
Total Completion Date	May 31, 2023	<i>May 30, 2023</i>

**Design-Build Agreement allows for deferred paving of certain alignments within these segments due to potential weather implications in November.*

7. Site Photographs



S1 (W01 Detour): The W01 Detour, now fully implemented with traffic running WB & EB. Taken November 2, 2020



S2 (Hwy 17 EB): A DMS sign notifying Hwy 17 EB traffic of the upcoming lane shift. Taken November 6, 2020



S4 (Delta Nature Reserve): Flooding due to a combination of a King tide and recent heavy rainfall. Taken November 13, 2020



S4 (L2200): Equipment along the inside of the Hwy 91SB off-ramp to Nordel Way EB loop. Taken November 20, 2020



S1 (River Rd. West): A PGC dozer spreading preload/embankment fill over top of laid filter fabric along the L250 alignment. Taken November 26, 2020



S4 (Laydown Area): PGC excavators feeding a jaw crusher with broken concrete removed from various locations on the Project Site. Taken November 30, 2020

8. Project Cost Report

- To date, \$92 million has been spent on the Project
- The approved capital Project budget is \$260 million