

Highway 91/17 Upgrade Project

MONTHLY STATUS REPORT

Month Ending May 31, 2021

1. PROJECT DASHBOARD

Project Delivery Objectives		Overall Project	DB Contractor	Owners/Other Works	Comments
Safety	Take every reasonable step to ensure that the work is performed safely and in compliance with all applicable safety regulations, and in accordance with government policy.	●	●	●	Safety meetings and orientations ongoing.
Budget	Delivered within the approved budget.	●	●	●	The Project has an approved capital budget of \$260 million and continues to track on budget.
Schedule	Delivered within the approved schedule.	●	●	●	Most key Project activities are proceeding on schedule. Working to mitigate schedule impacts
Scope	Deliver the approved scope.	●	●	●	Delivery of the specified components is on track.
Indigenous Groups	Continue to build and maintain a positive collaborative working relationship	●	●	●	Discussions and consultation with Indigenous groups ongoing.
Environmental	Ensure the work is performed in an environmentally responsible manner.	●	●	●	The Project being delivered in accordance with the obligations identified in the Construction Environment Management Plan.
Community Benefits	Incorporate the Community Benefits Objectives into the Project.	●	●	●	Community Benefits Objectives implementation ongoing by the Design-Builder.
Third Parties	Continue to build and maintain positive relationships with Project Partners and other third parties.	●	●	●	Ongoing engagement with Project partners and other third parties.
Stakeholder Engagement	Continue to build and maintain positive relationships with the community, and other stakeholders.	●	●	●	Engagement with key Project partners is ongoing. Community and stakeholder engagement will continue.
Quality	Implement an effective Quality Management System.	●	●	●	Quality audits and reviews performed as required per the Quality Management Plan.

Status	Description
●	Not currently applicable, as the Owner's Works are complete
●	Managing some issues, negotiating resolution; required immediately
●	Managing some issues, negotiating resolution; required in the near term
●	Good progress

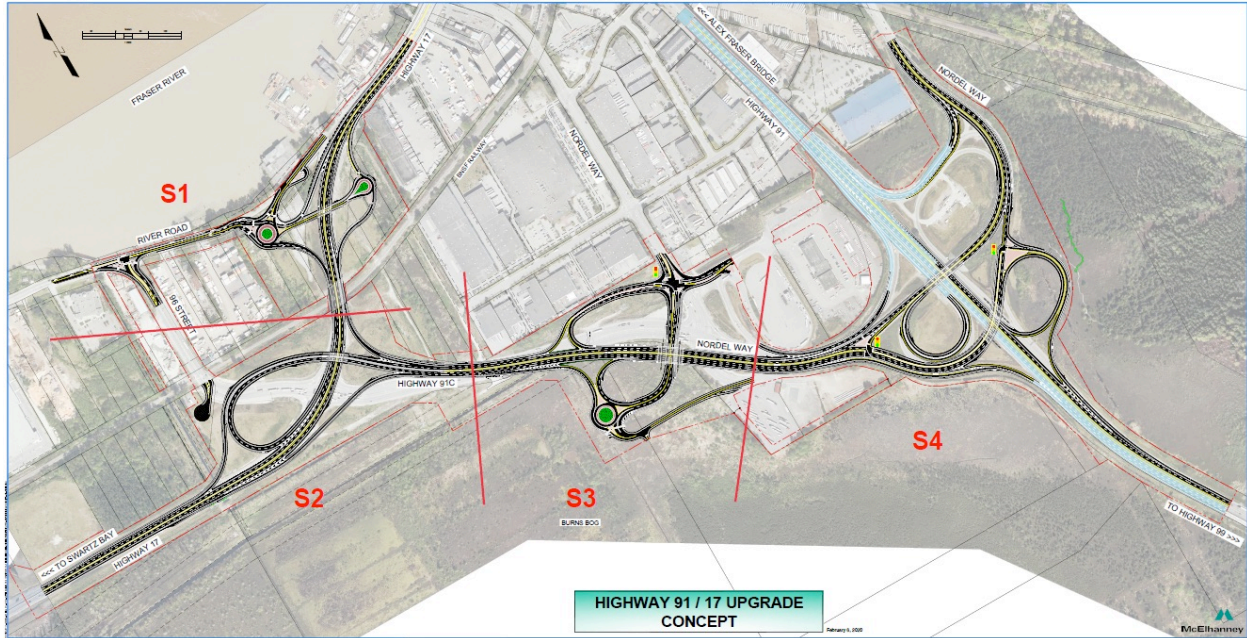
2. Introduction

Project Overview

The Highway 91/17 & Deltaport Way Upgrade Project (the Program) is comprised of the Highway 91/17 Upgrade Project, as well as the 27B Avenue and Deltaport Way Improvements Project. The 27B Avenue and Deltaport Way improvements were completed in 2019 and are no longer to be reported out on in subsequent monthly reports.

The Highway 91/17 Upgrade Project (the Project) is a subcomponent project of the broader Program and includes a combination of improvements to the existing Highway 91, Highway 17, and Highway 91 Connector corridors to improve travel safety and efficiency. These upgrades will improve local and commercial travel time and reliability in the area, reduce conflicts between commercial vehicles and other traffic, and support community and economic development. The Highway 91/17 components also complement the recently completed 72nd Avenue Interchange Project and the Alex Fraser Bridge Project.

A Design-Build Agreement between the BC Ministry of Transportation and Infrastructure (the Ministry), the BC Transportation Financing Authority (BCTFA), and Pacific Gateway Constructors General Partnership (the Design-Builder) was signed on December 13, 2019. As such, the Project has entered the implementation phase and a comprehensive Monthly Status Report will be prepared to report on progress, budget status, and risk.



May 2021 Highlights

Project highlights this month include:

Stakeholder Engagement	<ul style="list-style-type: none"> • Stakeholder engagement with Traffic Advisory Committee members on construction notifications and the BC Trucking Association on turning movement assessments • Ongoing public and stakeholder notification to advise of Project activities including upcoming traffic and construction activities
Environment	<ul style="list-style-type: none"> • Environmental protection measures continue as part of increased active construction • Design-Builder providing environmental submissions • Ongoing application and securing of environmental and archeological permits
Safety	<ul style="list-style-type: none"> • COVID-19 screenings and physical distancing being followed for staff and visitors • Safety inspections ongoing
Design	<ul style="list-style-type: none"> • Ongoing development and review of Design-Builder detailed design
Construction	<p>Segment 1 – River Road / Highway 17 Interchange</p> <ul style="list-style-type: none"> • River Road west roundabout gravel placement and fine grading • River Road structure girder installation • Hwy 17 west ramp gravel placement and fine grading <p>Segment 2 – Highway 91C / Highway 17 Interchange</p> <ul style="list-style-type: none"> • Hwy 17 structure stone column installation continues • Hwy 17 west gravel placement and fine grading • Hwy 91C wildlife crossing installation <p>Segment 3 – Highway 91C / Weigh Scale Interchange</p> <ul style="list-style-type: none"> • Nordel Truck Parking used as laydown area <p>Segment 4 – Highway 91 / Nordel Way interchange</p> <ul style="list-style-type: none"> • Ongoing Hwy 91 west side culvert installation • Hwy 91 west gravel placement and fine grading
Traffic Management	<ul style="list-style-type: none"> • Hwy 91 Southbound (SB) to Nordel Way Eastbound (EB) offramp closures • Hwy 17 Westbound (WB) and EB nighttime slow lane closure • Hwy 91C WB and EB nighttime lane closures with 2 min stoppages for rock truck crossing.
Quality	<ul style="list-style-type: none"> • Ongoing implementation and review of quality system

3. PROJECT DELIVERY

Project Controls

Completed this Month	<ul style="list-style-type: none"> • Ongoing Project control meetings • Ongoing review of Risk Register • Ongoing review of Project schedule, scope and budget
Key activities for Next 3 months	<ul style="list-style-type: none"> • Ongoing project control meetings • Ongoing review of Risk Register • Ongoing review of Project schedule, scope and budget

4. PROJECT DEVELOPMENT

Communications and Stakeholder Engagement

Completed this Month	<ul style="list-style-type: none"> • Stakeholder engagement with Traffic Advisory Committee members on construction notifications and the BC Trucking Association on turning movement assessments • Provided updates to interested stakeholder groups as requested • Reviewed Design-Builder communications submittals • Supported the Design-Builder with traffic and construction notifications to the public, community, and stakeholders • Planning for the Traffic Advisory Committee Meeting • Ongoing Project website updates • Ongoing enquiry response
Key Activities for Next 3 months	<ul style="list-style-type: none"> • Continue to support the Design-Builder regarding upcoming traffic and construction notifications to the public, community and stakeholders • Convene June Traffic Advisory Committee meeting • Ongoing enquiry response • Ongoing Project website updates

Environment

Completed this Month	<ul style="list-style-type: none"> • Ongoing regular weekly meetings with the Design-Builder regarding environmental components of the Project • Ongoing securing, extension, and amendment of environmental permits • Environmental Work Plans and Habitat Offsetting Plans received and implemented • Design-Builder environmental protection measures ongoing for the Delta Nature Reserve (DNR) and Burns Bog interface locations • Annual Environmental Report received
Key Activities for Next 3 months	<ul style="list-style-type: none"> • Securing, extension, and amendment of environmental permits as required • Ongoing environmental oversight of Design-Builder’s environmental mitigation measures • Ongoing submission review in accordance with the DBA requirements

Agriculture

Completed this Month	<ul style="list-style-type: none">Agrologist submitted 2020 status report to the Agricultural Land Commission (ALC)
Key activities for Next 3 months	<ul style="list-style-type: none">Monitor construction to meet ALC conditions and proceed with any action items

Indigenous Groups

Completed this Month	<ul style="list-style-type: none">Ongoing review and sharing of key project documents with Indigenous groupsMeetings ongoing with Design-Builder and Project teamContinued communication with Indigenous groups regarding Project construction activitiesContracting and employment opportunities for environmental monitoring ongoing
Key Activities for Next 3 months	<ul style="list-style-type: none">Responses to Indigenous group comments on key Project documentsOn-going consultation and engagement relating to geotechnical, environmental, and archaeological works

5. DESIGN BUILD PROGRESS

Safety

Completed this Month	<ul style="list-style-type: none">Pacific Gateway Constructors is the Prime Contractor on the Project SiteOnsite safety training sessions held for all staffOngoing COVID-19 protocol implementation
Key Activities for Next 3 months	<ul style="list-style-type: none">Construction activities and ongoing site safety training sessions as requiredDaily & weekly safety briefings for active site crewsMonthly mass safety meetingsOngoing COVID-19 protocol implementation
Safety Incidents	<ul style="list-style-type: none">1 first aid incidentMinor equipment incidents on site

Design

Completed this Month	<ul style="list-style-type: none">Ongoing meetings with various regulatory agencies/stakeholdersContinued development and review of design including detour implementation, landscape, drainage, roadway, electrical, structural, signage, and bridge designOngoing discussions regarding environmental mitigations in Delta Nature Reserve area
Key Activities for Next 3 months	<ul style="list-style-type: none">Ongoing review of design submissionsOngoing meetings with various regulatory agencies/stakeholders

Construction

<p>Completed this Month</p>	<p>Segment 1 – River Road / Highway 17 Interchange</p> <ul style="list-style-type: none"> • River Road west roundabout gravel placement and fine grading • River Road structure girder installation • Hwy 17 west ramp gravel placement and fine grading <p>Segment 2 – Highway 91C / Highway 17 Interchange</p> <ul style="list-style-type: none"> • Ongoing drainage construction south side of Hwy 17 on Hwy 17 west alignment • Ongoing Hwy 17 structure stone column installation • Hwy 17 west gravel placement and fine grading • Hwy 91C wildlife crossing installation <p>Segment 3 – Highway 91C / Weigh Scale Interchange</p> <ul style="list-style-type: none"> • Ongoing Hwy 17 West sand embankment on south side • Nordel Truck Parking used as laydown area <p>Segment 4 – Nordel Way / Highway 91 Interchange</p> <ul style="list-style-type: none"> • Ongoing sand embankment on Hwy 91 west side, access from easement towards truck parking area • Ongoing Nordel Way structure stone column installation on west side of Hwy 91 • Ongoing Hwy 91 west side culvert installation • Hwy 91 west side gravel placement and fine grading <p>Hwy 99 – Preload removal</p> <ul style="list-style-type: none"> • Sand preload removal substantially complete.
<p>Key Activities for Next 3 months</p>	<p>Segment 1 – River Road / Highway 17 Interchange</p> <ul style="list-style-type: none"> • Opening of River Road structure • Paving and opening of Hwy 17 West and River Road <p>Segment 2 – Highway 91C / Highway 17 Interchange</p> <ul style="list-style-type: none"> • Preload of widening of Hwy 17 on north and south sides • Drainage installation south side of Hwy 17 to south side Hwy 91C • Stone columns installation of Sunbury structure • Hwy 91C WB to Hwy 17 detour implementation <p>Segment 3 – Highway 91C / Weigh Scale Interchange</p> <ul style="list-style-type: none"> • Weigh Scale structure construction <p>Segment 4 – Nordel Way / Highway 91 Interchange</p> <ul style="list-style-type: none"> • Hwy 91 west side construction (Nordel Way to Hwy 91 SB on-ramp) • Stone column installation of Nordel Way structure • Preload placement for embankment of new Nordel structure • Hwy 91 west side ultimate opening

Hwy 99 – Preload removal

- Complete removal of preload
-

Traffic Management

Completed this Month	<ul style="list-style-type: none">• Hwy 91 SB to Nordel Way EB offramp closures.• Hwy 17 WB nighttime slow lane closure• Hwy 91C WB and EB nighttime lane closures
Key Activities for Next 3 months	<ul style="list-style-type: none">• Nighttime lane closures Hwy 17 EB, WB, and Hwy 91C• Nighttime lane closures Nordel way to Hwy 9 1SB on ramp for Hwy 91 West construction• Weekend day and night closures Hwy 91 SB slow lane• 2 min closures Hwy 91C for rock truck crossings• Weekend day and night closures Hwy 17 EB slow lane• Pending approvals of work plans, preload activities anticipated in all segments

Quality

Completed this Month	<ul style="list-style-type: none">• Ongoing monitoring of quality management system• Ongoing quality audits with Design-Builder
Key Activities for Next 3 months	<ul style="list-style-type: none">• Ongoing implementation and monitoring of quality management system• Ongoing quality audits

6. Milestones Achieved Date

The milestone dates shown in DBA Schedule 3 Appendix A have been updated in the May 2021 Works Schedule submitted by the Design-Builder as follows:

Activity Name	DBA Milestone Date:	Milestone Date (May 2021 Works Schedule)
Construction Start		
Highway 91 / Nordel Way Interchange	April 6, 2020	June 16, 2020
Delta Nature Reserve Boardwalk	July 2, 2020	N/A
Highway 91C / Weigh Scale Interchange	April 6, 2020	August 14, 2020
Highway 91C/ Highway 17 Interchange	April 6, 2020	July 12, 2020
Highway 17 / River Road Interchange	April 6, 2020	May 8, 2020
Construction Complete		
Highway 91 / Nordel Way Interchange	September 15, 2022	November 30, 2022
Delta Nature Reserve Boardwalk	October 6, 2020	March 8, 2021
Highway 91C / Weigh Scale Interchange	March 15, 2023*	November 30, 2022
Highway 91C/ Highway 17 Interchange	March 15, 2023*	November 30, 2022
Highway 17 / River Road Interchange	October 4, 2021	October 21, 2021
Substantial Completion Date	<i>November 30, 2022</i>	<i>November 30, 2022</i>
Total Completion Date	<i>May 31, 2023</i>	<i>May 31, 2023</i>

7. Site Photographs



S1: River Road West - Concrete bases. Taken May 3, 2021



S2: Hwy 91C Cocoa matting, and silt fence install. Taken May 7, 2021



S1: River Road Structure - South stem wall concrete pour. Taken May 14, 2021



S2: Sunbury structure excavation of stone columns pad. Taken May 18, 2021



S1: River Road structure south upper East MSE wall. Taken May 26, 2021



S2: L325 Storm 330 installation at Silda Ditch. Taken May 31, 2021

8. Project Cost Report

- To date, \$130.6 million has been spent on the Project
- The approved capital Project budget is \$260 million