

Highway 91/17 Upgrade Project

MONTHLY STATUS REPORT

Month Ending April 30, 2021

1. PROJECT DASHBOARD

| Project Delivery Objectives | | Overall Project | DB Contractor | Owners/Other Works | Comments |
|-------------------------------|--|-----------------|---------------|--------------------|---|
| Safety | Take every reasonable step to ensure that the work is performed safely and in compliance with all applicable safety regulations, and in accordance with government policy. | ● | ● | ● | Safety meetings, audits, and orientations ongoing. |
| Budget | Delivered within the approved budget. | ● | ● | ● | The Project has an approved capital budget of \$260 million and continues to track on budget. |
| Schedule | Delivered within the approved schedule. | ● | ● | ● | Most key Project activities are proceeding on schedule. Working to mitigate schedule impacts |
| Scope | Deliver the approved scope. | ● | ● | ● | Delivery of the specified components is on track. |
| Indigenous Groups | Continue to build and maintain a positive collaborative working relationship | ● | ● | ● | Discussions and consultation with Indigenous groups ongoing. |
| Environmental | Ensure the work is performed in an environmentally responsible manner. | ● | ● | ● | The Project being delivered in accordance with the obligations identified in the Construction Environment Management Plan |
| Community Benefits | Incorporate the Community Benefits Objectives into the Project. | ● | ● | ● | Community Benefits Objectives implementation ongoing by the Design-Builder. |
| Third Parties | Continue to build and maintain positive relationships with Project Partners and other third parties. | ● | ● | ● | Ongoing engagement with Project partners and other third parties. |
| Stakeholder Engagement | Continue to build and maintain positive relationships with the community, and other stakeholders. | ● | ● | ● | Engagement with key Project partners is ongoing. Community and stakeholder engagement will continue. |
| Quality | Implement an effective Quality Management System. | ● | ● | ● | Quality audits and reviews performed as required per the Quality Management Plan. |

| Status | Description |
|--------|---|
| ● | Not currently applicable, as the Owner's Works are complete |
| ● | Managing some issues, negotiating resolution; required immediately |
| ● | Managing some issues, negotiating resolution; required in the near term |
| ● | Good progress |

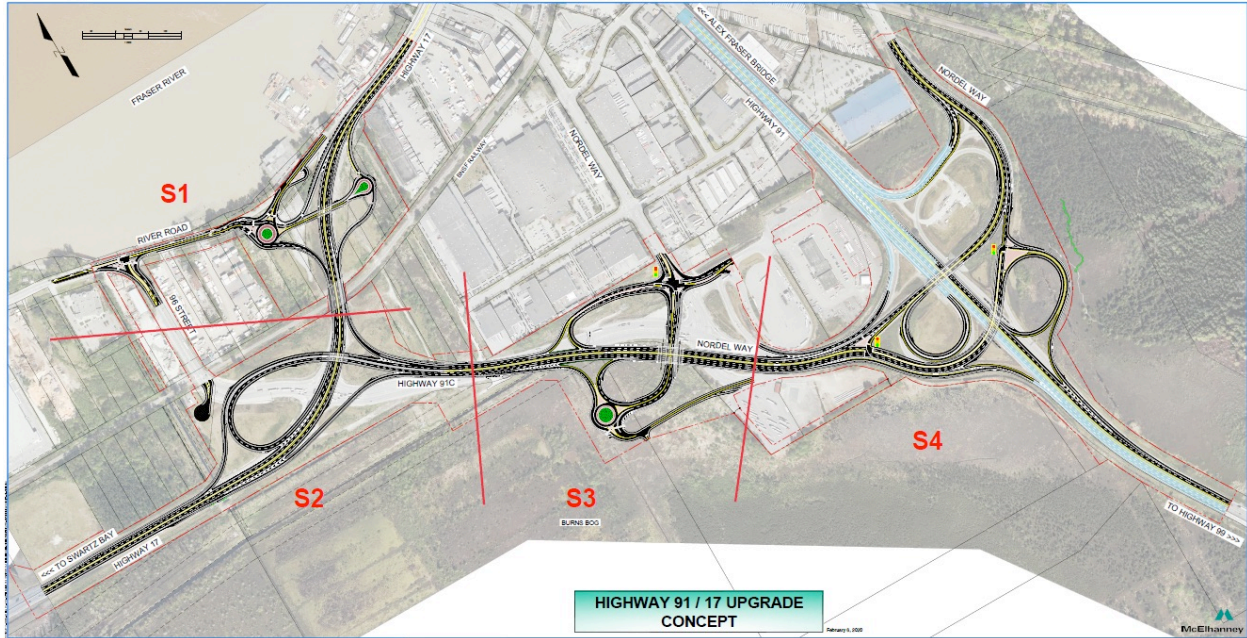
2. Introduction

Project Overview

The Highway 91/17 & Deltaport Way Upgrade Project (the Program) is comprised of the Highway 91/17 Upgrade Project, as well as the 27B Avenue and Deltaport Way Improvements Project. The 27B Avenue and Deltaport Way improvements were completed in 2019 and are no longer be reported out on in the monthly reports.

The Highway 91/17 Upgrade Project (the Project) is a subcomponent project of the broader Program and includes a combination of improvements to the existing Highway 91, Highway 17, and Highway 91 Connector corridors to improve travel safety and efficiency. These upgrades will improve local and commercial travel time and reliability in the area, reduce conflicts between commercial vehicles and other traffic, and support community and economic development. The Highway 91/17 components also complement the recently completed 72nd Avenue Interchange Project and the Alex Fraser Bridge Project.

A Design-Build Agreement between the BC Ministry of Transportation and Infrastructure (the Ministry), the BC Transportation Financing Authority (BCTFA), and Pacific Gateway Constructors General Partnership (the Design-Builder) was signed on December 13, 2019. As such, the Project has entered the implementation phase and a comprehensive Monthly Status Report will be prepared to report on progress, budget status, and risk.



April 2021 Highlights

Project highlights this month include:

| | |
|-------------------------------|---|
| Stakeholder Engagement | <ul style="list-style-type: none"> Stakeholder engagement and communications related to the improvements to a section of the Alex Fraser Bridge multi-use path Ongoing public and stakeholder notification to advise of Project activities including upcoming traffic and construction activities |
| Environment | <ul style="list-style-type: none"> Environmental protection measures continue as part of increased active construction Design-Builder providing environmental submissions Quarterly water quality sampling/report completed |
| Safety | <ul style="list-style-type: none"> COVID-19 screenings and physical distancing being followed for staff and visitors Safety inspections ongoing |
| Design | <ul style="list-style-type: none"> Ongoing development and review of Design-Builder detailed design |
| Construction | <p>Segment 1 – River Road / Highway 17 Interchange</p> <ul style="list-style-type: none"> River Road West ramps/roundabout grading and gravel placement complete <p>Segment 2 – Highway 91C / Highway 17 Interchange</p> <ul style="list-style-type: none"> Sunbury west ramps gravel placement complete Hwy 91C/Hwy 17 intersection signal relocation for Hwy 91C traffic split northbound (NB) and southbound (SB) detour <p>Segment 3 – Highway 91C / Weigh Scale Interchange</p> <ul style="list-style-type: none"> Embankment removal on north side of Hwy 91C commenced Hwy 91C / Weigh Scale Interchange detour implemented Rock truck nighttime crossing of Hwy 91C completed <p>Segment 4 – Highway 91 / Nordel Way interchange</p> <ul style="list-style-type: none"> Sand embankment in southeast quadrant of future Nordel Way interchange complete Nordel Way structure stone column on east side of Hwy 91 complete Embankment on east side of Hwy 91 commenced Hwy 91 west side culvert installation |
| Traffic Management | <ul style="list-style-type: none"> Hwy 91 SB to Nordel Way eastbound (EB) offramp closures Hwy 17 westbound (WB) and EB nighttime slow lane closure Hwy 91C WB and EB nighttime lane closures including 2 min stoppages for rock truck crossings |
| Quality | <ul style="list-style-type: none"> Ongoing implementation and review of quality system |

3. PROJECT DELIVERY

Project Controls

| | |
|---|---|
| Completed this Month | <ul style="list-style-type: none"> • Ongoing project control meetings • Ongoing review of Risk Register • Ongoing review of project schedule, scope and budget |
| Key activities for Next 3 months | <ul style="list-style-type: none"> • Ongoing project control meetings • Ongoing review of Risk Register • Ongoing review of project schedule, scope and budget |

4. PROJECT DEVELOPMENT

Communications and Stakeholder Engagement

| | |
|---|--|
| Completed this Month | <ul style="list-style-type: none"> • Provided updates to interested stakeholder groups as requested • Reviewed Design-Builder communications submittals • Supported the Design-Builder with traffic and construction notifications to the public, community, and stakeholders. Includes the Highway 99 preload removal work (south of the George Massey Tunnel) and Alex Fraser Bridge multi-use path improvements • Ongoing Project website updates • Ongoing enquiry response |
| Key Activities for Next 3 months | <ul style="list-style-type: none"> • Ongoing support to the Design-Builder regarding the Highway 99 preload removal work and Alex Fraser Bridge multi-use path improvements • Continue to support the Design-Builder regarding upcoming traffic and construction notifications to the public, community and stakeholders • Planning for next quarterly Traffic Advisory Committee meeting • Ongoing enquiry response • Ongoing Project website updates |

Environment

| | |
|---|---|
| Completed this Month | <ul style="list-style-type: none"> • Ongoing regular weekly meetings with the Design-Builder regarding environmental components of the Project • Ongoing securing, extension, and amendment of environmental permits • Environmental Work Plans and reports received and implemented • Design-Builder environmental protection measures and mitigations ongoing for the Delta Nature Reserve (DNR) and Project interface locations • Project completed quarterly water monitoring assessment |
| Key Activities for Next 3 months | <ul style="list-style-type: none"> • Securing, extension, and amendment of environmental permits as required • Ongoing environmental oversight of Design-Builder’s environmental mitigation measures • Ongoing submission review in accordance with the Project requirements |

Agriculture

| | |
|----------------------------------|--|
| Completed this Month | <ul style="list-style-type: none"> 2020 status report drafted for the Agricultural Land Commission (ALC) |
| Key activities for Next 3 months | <ul style="list-style-type: none"> Submit 2020 update report for ALC Monitor construction to meet ALC conditions and proceed with any action items |

Indigenous Groups

| | |
|----------------------------------|--|
| Completed this Month | <ul style="list-style-type: none"> Ongoing review and sharing of key Project documents with Indigenous groups Meetings ongoing with Design-Builder and Project team Continued communication with Indigenous groups regarding Project construction activities Contracting and employment opportunities for environmental monitoring ongoing |
| Key Activities for Next 3 months | <ul style="list-style-type: none"> Responses to Indigenous group comments on key Project documents On-going consultation and engagement relating to environmental and archaeological works |

5. DESIGN BUILD PROGRESS

Safety

| | |
|----------------------------------|--|
| Completed this Month | <ul style="list-style-type: none"> Pacific Gateway Constructors is the Prime Contractor on the Project Site Onsite safety training sessions held for all staff Ongoing COVID-19 protocol implementation |
| Key Activities for Next 3 months | <ul style="list-style-type: none"> Construction activities and ongoing site safety training sessions as required Daily & weekly safety briefings for active site crews Monthly mass safety meetings Ongoing COVID-19 protocol implementation |
| Safety Incidents | <ul style="list-style-type: none"> None |

Design

| | |
|----------------------------------|--|
| Completed this Month | <ul style="list-style-type: none"> Ongoing meetings with various regulatory agencies/stakeholders Continued development and review of design including detour implementation, landscape, drainage, roadway, electrical, structural, signage, and bridge design Completion of DNR Boardwalk Completion Certificate, Record Drawings & other closeout related documents |
| Key Activities for Next 3 months | <ul style="list-style-type: none"> Ongoing review of design submissions Ongoing meetings with various regulatory agencies/stakeholders |

Construction

| | |
|---|---|
| Completed this Month | <p>Segment 1 – River Road / Highway 17 Interchange</p> <ul style="list-style-type: none">• River Road west ramps/roundabout grading and gravel placement complete• MSE wall construction for future River Road structure commenced <p>Segment 2 – Highway 91C / Highway 17 Interchange</p> <ul style="list-style-type: none">• Sunbury west ramps gravel placement complete• Hwy 91C – Hwy 17 intersection signal relocation for Hwy 91C traffic split NB and SB detour• Ongoing drainage construction south side of Hwy 17• Hwy 17 stone columns requiring pre-auguring due to soil conditions <p>Segment 3 – Highway 91C / Weigh Scale Interchange</p> <ul style="list-style-type: none">• Embankment removal on north side of Hwy 91C commenced• Hwy 91C / Weigh Scale Interchange s detour implemented• Rock truck nighttime crossing of Hwy 91C completed• Ongoing sand embankment west of Weigh Scale Rd <p>Segment 4 – Nordel Way / Highway 91 Interchange</p> <ul style="list-style-type: none">• Sand embankment in southeast quadrant of Nordel Way interchange complete• Nordel Way structure stone column on east side of Hwy 91 complete• Nordel Way structure stone column commenced on west side of Hwy 91• Embankment on east side of Hwy 91 commenced• Hwy 91 west side culvert installation• Sand embankment continues on Hwy 91 west side alignment, access from easement towards truck parking area• Crane crossing of Hwy 91 requiring rolling closure of highway <p>Hwy 99 – Preload removal</p> <ul style="list-style-type: none">• Ongoing sand preload removal between 80th Ave and 96th Ave |
| Key Activities for Next 3 months | <p>Segment 1 – River Road / Highway 17 Interchange</p> <ul style="list-style-type: none">• River Road utility relocation construction• River Road structure construction• Paving and opening of Sunbury west and River Road <p>Segment 2 – Highway 91C / Highway 17 Interchange</p> <ul style="list-style-type: none">• Preload of widening of Hwy 17 on north and south sides• Drainage installation south side of Hwy 17 to south side Hwy 91C• Continue stone columns work of Sunbury structure• Detour implementation of Hwy 91C WB to Hwy 17 <p>Segment 3 – Highway 91C / Weigh Scale Interchange</p> <ul style="list-style-type: none">• Design-Builder working on permits and approvals |

| | |
|--|--|
| | <p>Segment 4 – Nordel Way / Highway 91 Interchange</p> <ul style="list-style-type: none"> • Hwy 91 west side construction (Nordel Way to Hwy 91 SB on-ramp) • Stone columns installation of Nordel Way structure • Highway 91 west side alignment ultimate opening <p>Hwy 99 – Preload removal</p> <ul style="list-style-type: none"> • Removal of preload between Hwy 17 and 112th St. |
|--|--|

Traffic Management

| | |
|---|---|
| Completed this Month | <ul style="list-style-type: none"> • Hwy 91 SB to Nordel Way EB offramp closures • Hwy 17 WB nighttime slow lane closure • Hwy 91C WB and EB nighttime lane closures including 2 min stoppages for rock truck crossing • Hwy 91 rolling closure for crane crossing |
| Key Activities for Next 3 months | <ul style="list-style-type: none"> • Nighttime lane closures Hwy 17 EB, WB, and Hwy 91C • Nighttime lane closures Nordel way to Hwy 91 SB on-ramp for Hwy 91 West construction • Nighttime lane closures Hwy 99 between Hwy 17 and 112 St • Weekend day and night closures Hwy 91 SB slow lane • 2 min closures Hwy 91C for rock truck crossings • Weekend day and night closures Hwy 17 EB slow lane |

Quality

| | |
|---|---|
| Completed this Month | <ul style="list-style-type: none"> • Ongoing monitoring of quality management system • Ongoing quality audits with Design-Builder |
| Key Activities for Next 3 months | <ul style="list-style-type: none"> • Ongoing implementation and monitoring of quality management system • Ongoing quality audits |

6. Milestones Achieved Date

The milestone dates shown in DBA Schedule 3 Appendix A have been updated in the April 2021 Works Schedule submitted by the Design-Builder as follows:

| Activity Name | DBA Milestone Date: | Milestone Date (April 2021 Works Schedule) |
|---------------|---------------------|--|
|---------------|---------------------|--|

| | | |
|---------------------------------------|--------------------------|--------------------------|
| Construction Start | | |
| Highway 91 / Nordel Way Interchange | April 6, 2020 | June 16, 2020 |
| Delta Nature Reserve Boardwalk | July 2, 2020 | N/A |
| Highway 91C / Weigh Scale Interchange | April 6, 2020 | August 14, 2020 |
| Highway 91C/ Highway 17 Interchange | April 6, 2020 | July 12, 2020 |
| Highway 17 / River Road Interchange | April 6, 2020 | May 8, 2020 |
| Construction Complete | | |
| Highway 91 / Nordel Way Interchange | September 15, 2022 | November 28, 2022 |
| Delta Nature Reserve Boardwalk | October 6, 2020 | March 8, 2021 |
| Highway 91C / Weigh Scale Interchange | March 15, 2023* | November 30, 2022 |
| Highway 91C/ Highway 17 Interchange | March 15, 2023* | November 25, 2022 |
| Highway 17 / River Road Interchange | October 4, 2021 | October 21, 2021 |
| Substantial Completion Date | <i>November 30, 2022</i> | <i>November 30, 2022</i> |
| Total Completion Date | <i>May 31, 2023</i> | <i>May 25, 2023</i> |

7. Site Photographs



S3: 1200mm HDPE culvert installation. Taken April 6, 2021



S1: River Road structure - S. MSE wall construction. Taken April 8, 2021



S3: Silda Ditch south culvert headwall. Taken April 13, 2021



S4: Nordel Way structure crane move. Taken April 19, 2021



S4: Hwy 91 east side stockpile of fill material. Taken April 26, 2021



S2: Weigh Scale Rd west side excavated material on top of preload. Taken April 30, 2021

8. Project Cost Report

- To date, \$124.9 million has been spent on the Project
- The approved capital Project budget is \$260 million