

Highway 17/Ravine Way Transit and Active Transportation Infrastructure Improvements

Public Information Session

Thank you for participating in this Highway 17/ Ravine Way Transit and Active Transportation Infrastructure Improvements information session.

The purpose of this information session is to:

- **Share information** about the Project need and proposed concept design
- **Seek feedback** on the proposed concept design
- **Invite input** to help advance the Project to final design



The Project lies within the territories of the ɫəkʷəŋən peoples represented by the Songhees and Esquimalt Nations and the ƱSÁNEĆ peoples represented by the ƱJOLĒLP' (Tsartlip), BOKÉĆEN (Pauquachin), STÁUTƱ (Tsawout), ƱSIKEM (Tseycum) Nations.



We welcome your input

- **Fill out a comment card at the info session**
- **Visit the Project page:**
gov.bc.ca/highway17ravineway
- **E-mail your feedback:**
TRAN.WEBMASTER@gov.bc.ca

About the Highway 17/Ravine Way Project

The project is located in the Uptown Area which is considered a major centre within Saanich. It is also a strategically located area at the intersection of the Galloping Goose and Lochside Regional Trails, as well as being identified as a future hub in the BC Transit RapidBus network.



Why Are Improvements Needed?

1. Enhance Transit Infrastructure

Existing transit facilities do not adequately support current or planned transit services.

2. Support Transit-Oriented Development

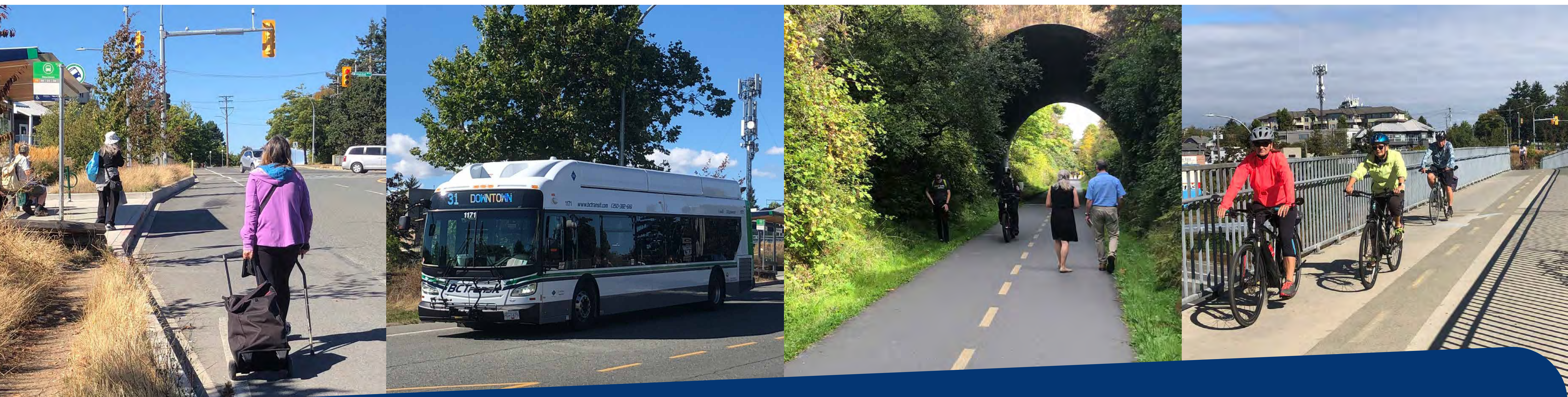
Uptown Exchange has been identified as a future site.

3. Promote Active Transportation

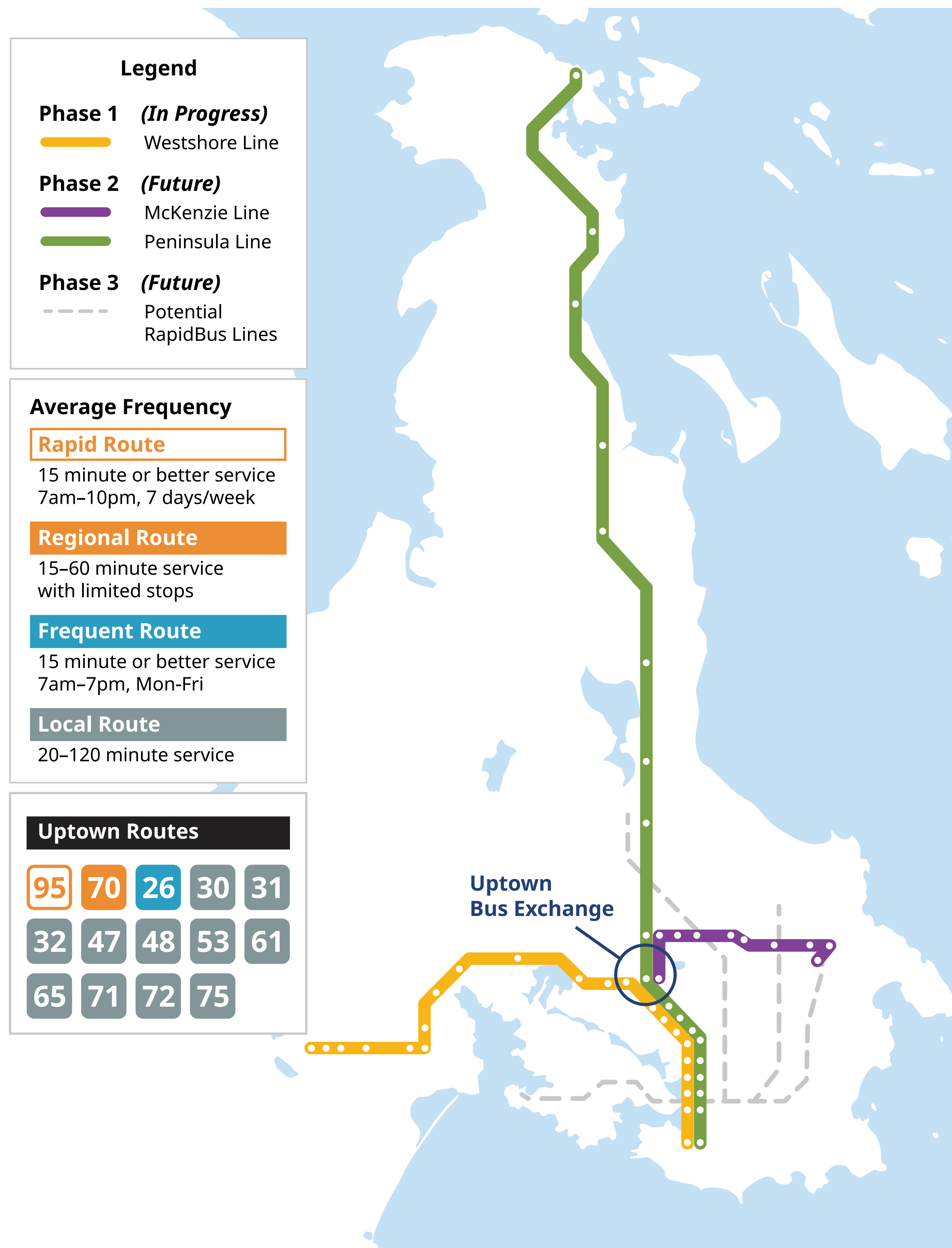
Existing network has gaps that act as a barrier to active transportation.

4. Improve Connections Between Travel Modes

It is challenging for users to shift between modes (i.e., from trails to bus).



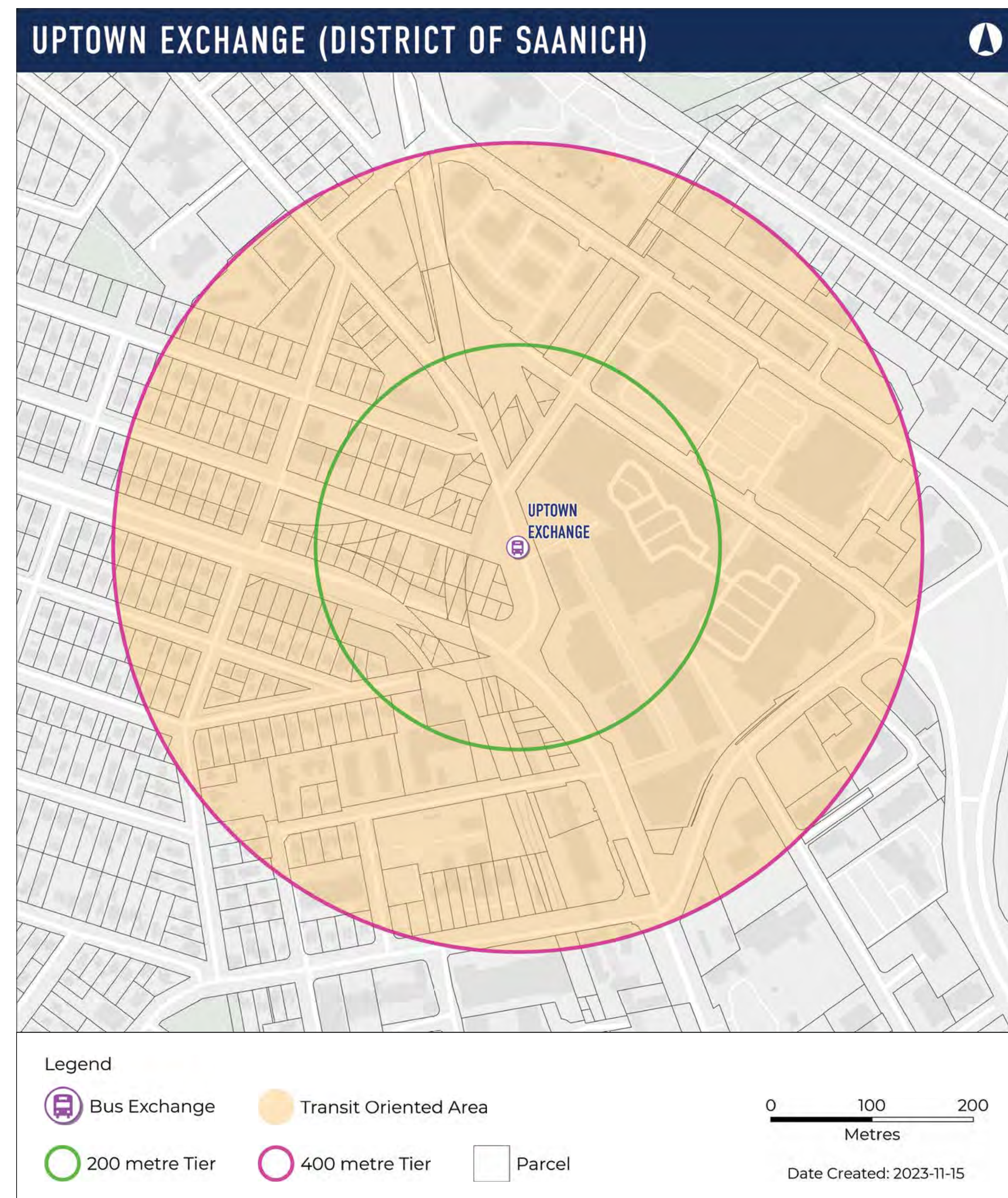
Enhance Transit Infrastructure



- Uptown Exchange is a **cornerstone hub** in the Greater Victoria Transit network and it provides key connections to the active transportation network.
- It is an important transfer point between the West Shore Line (Highway 1), Peninsula Line (Highway 17) and McKenzie Line (University of Victoria).
- Blink RapidBus launched in April 2023 and has designated stops on Highway 1 near the Uptown Exchange.
- The existing bus bay on Carey Road can only accommodate a single bus.
- Expanded facilities will support growth in transit ridership as developments continue in the area.
- New transit priority measures are required to increase service, schedule reliability and reduce delays.

Support Transit-Oriented Development

Transit-Oriented Development (TOD) equips neighborhoods with housing, amenities and active transportation options near major transit hubs like bus exchanges. They are designed to create convenient access to stores, schools, restaurants, services and public transportation.



TOD Legislation

In December 2023, new legislation was enacted requiring some municipalities to designate Transit-Oriented Development (TOD) Areas near transit hubs.

This includes the area within a 400-metre radius of the Uptown Exchange.

The Highway 17/Ravine Way Project supports a future TOD at the Uptown Exchange with increased transit capacity and multimodal connectivity.

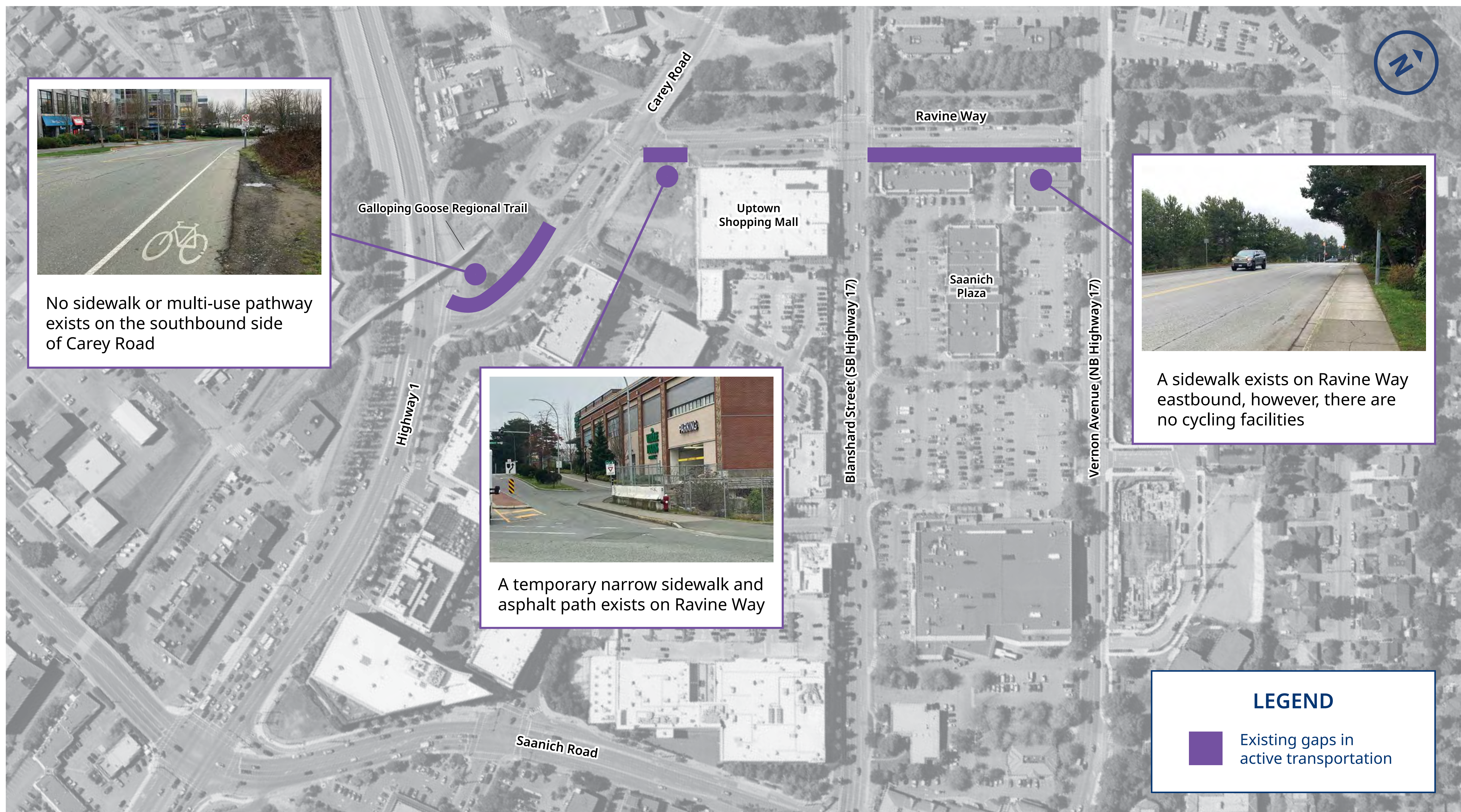
Support the Uptown TOD Project

- On April 8, 2024, the provincial government announced the acquisition of two parcels of land to support a future TOD with hundreds of new homes, community amenities and a transit hub.
- Planning for this development is in the early conceptual stages and engagement will start this summer.
- The proposed project improvements are designed to complement the future TOD at Uptown.

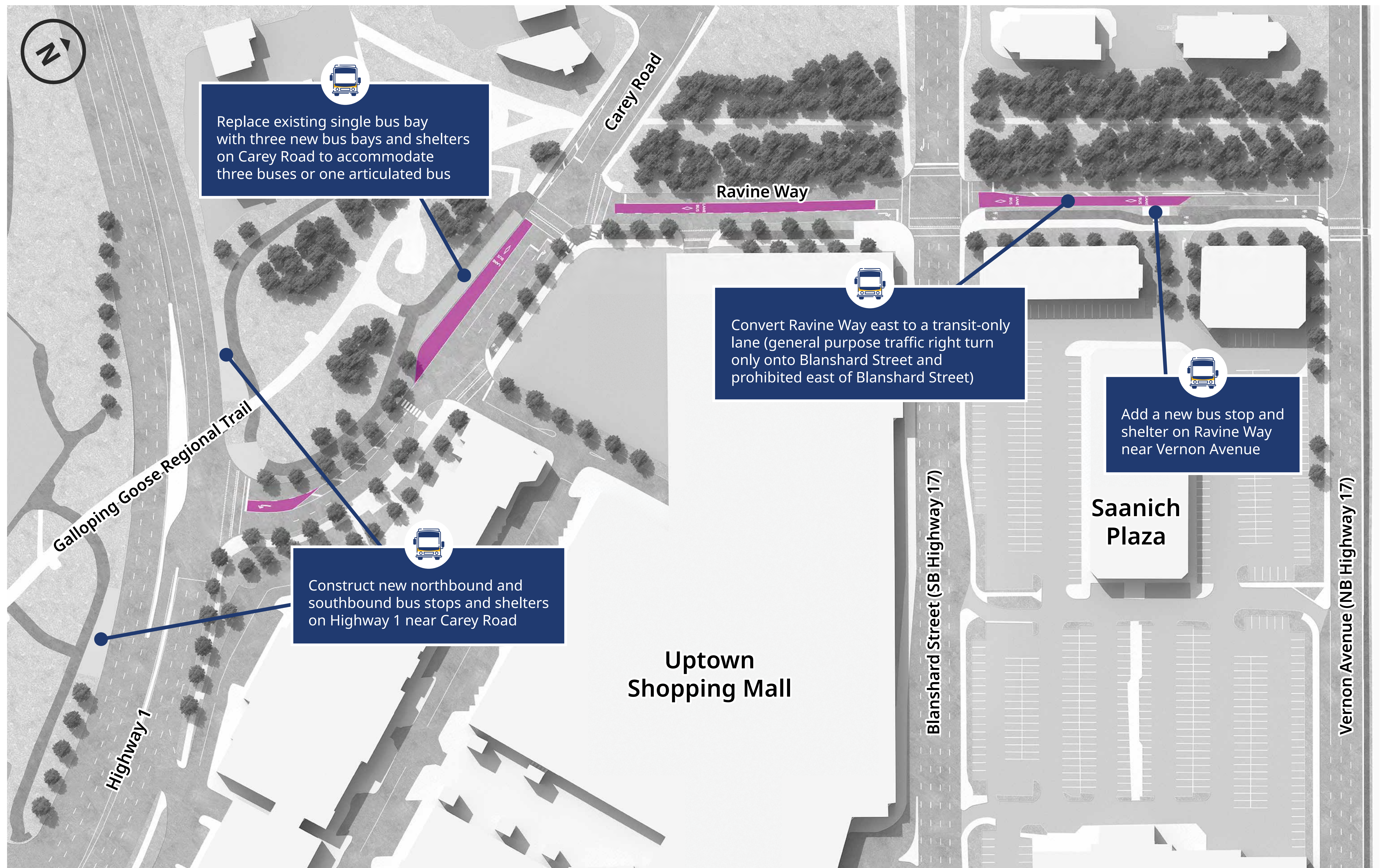


Promote Active Transportation and Improve Connections

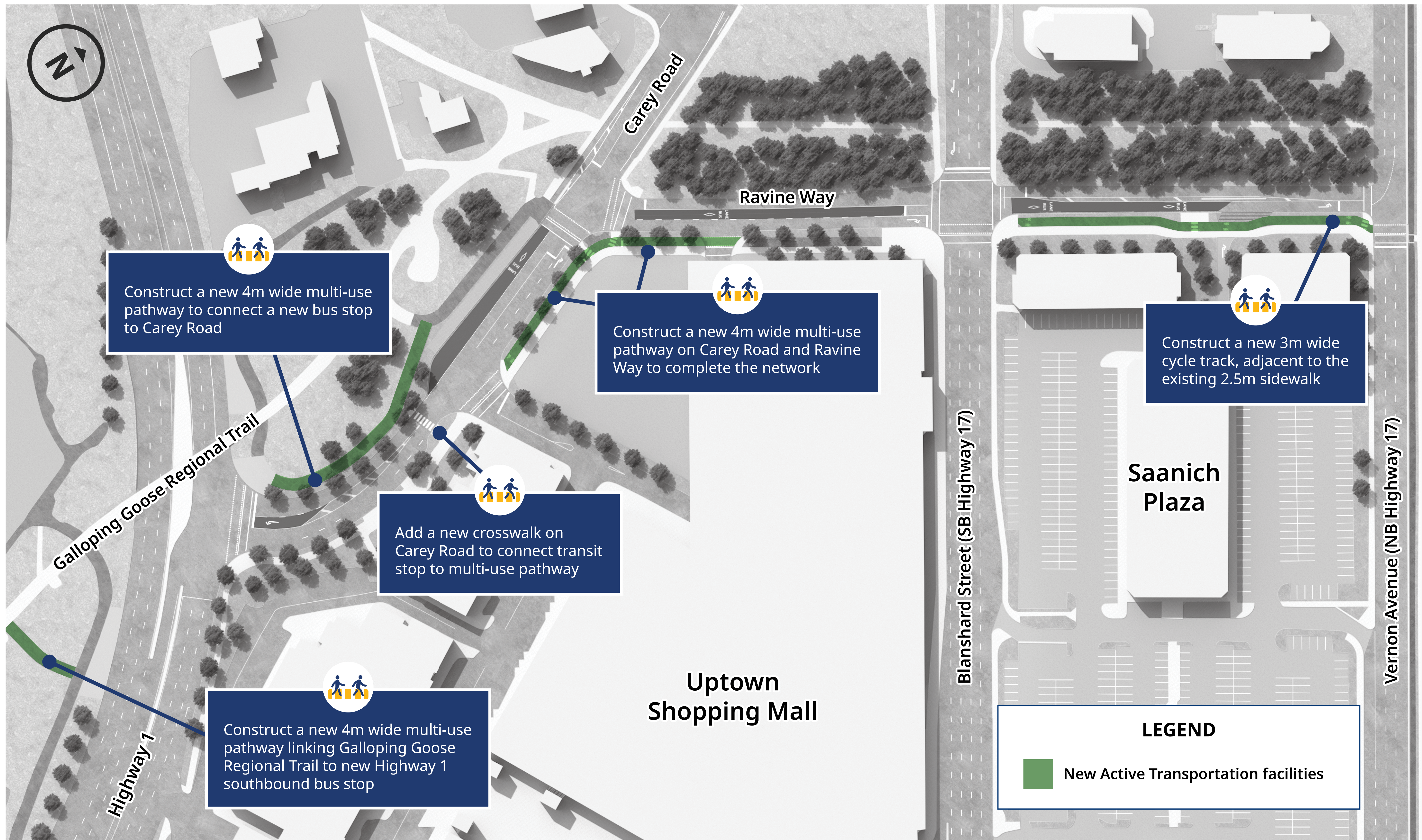
Connecting people to transit is critical. Today, approximately 7.5% of all daily trips in the Capital Region are by public transportation (approximately 82,500 trips per day). The Victoria Region Transit Future Plan identified a target to increase public transportation mode share to 12% (over 155,000 trips per day by 2038).



Proposed Scope of Transit Improvement



Proposed Scope of Active Transportation Improvements

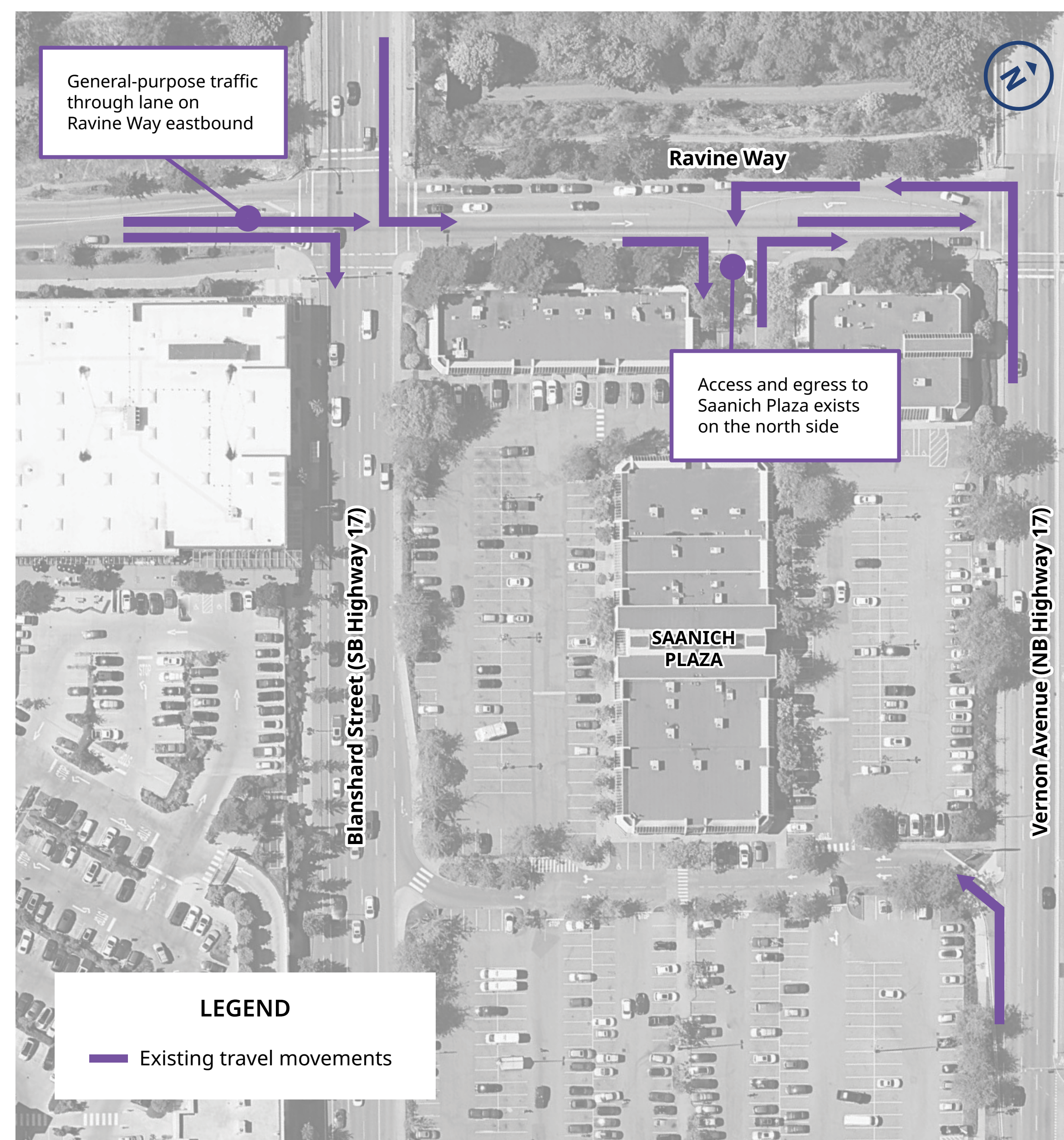


Proposed Changes to Vehicle Movements on Ravine Way and Saanich Plaza Access

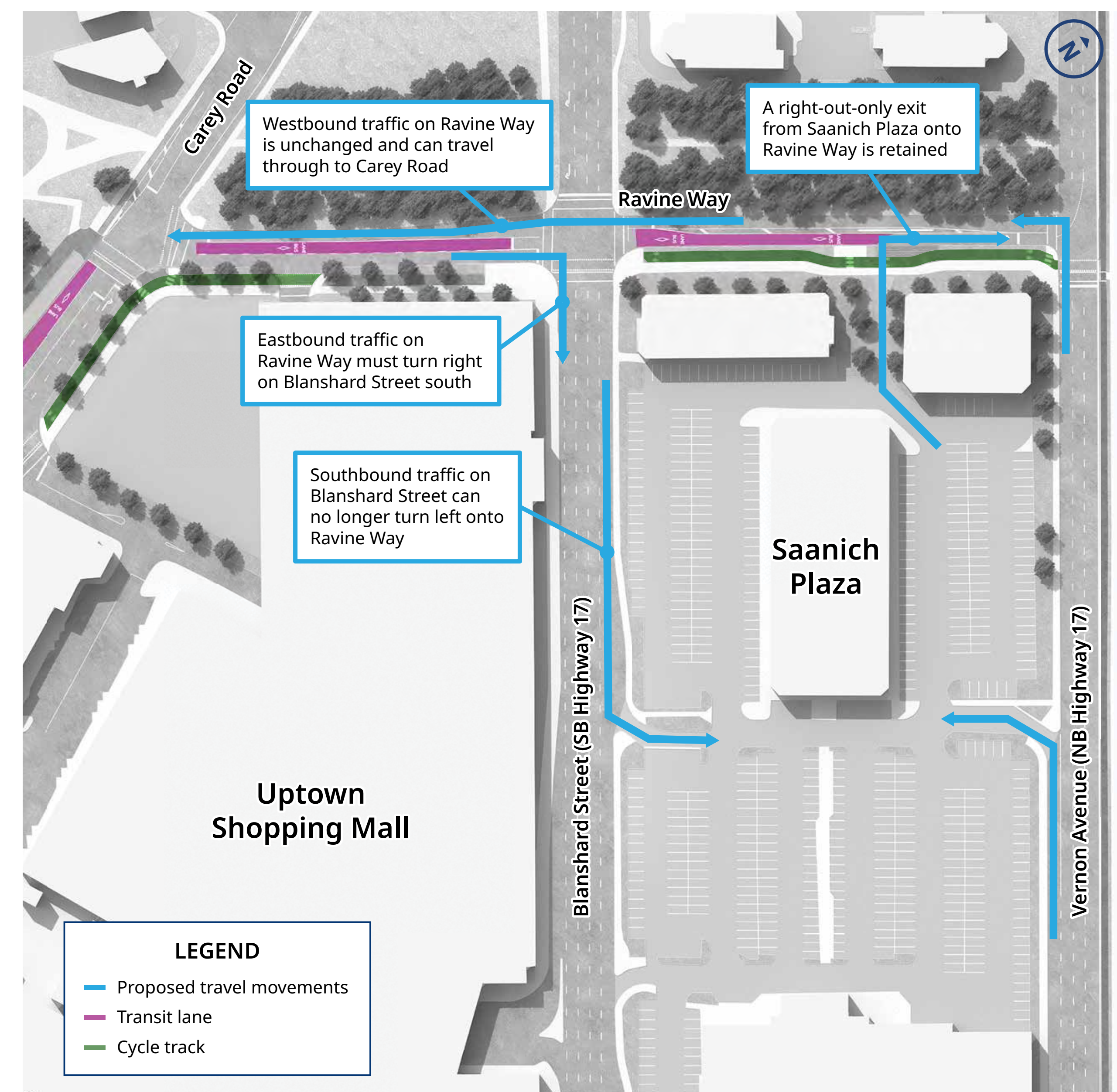
Blanshard Street and Ravine Way intersection changes:

- Eastbound general-purpose traffic through lane on Ravine Way between Blanshard Street and Vernon Avenue is removed.
- Eastbound left lane on Ravine Way becomes bus-only and eastbound curb lane is right-turn only.

Existing vehicle movements



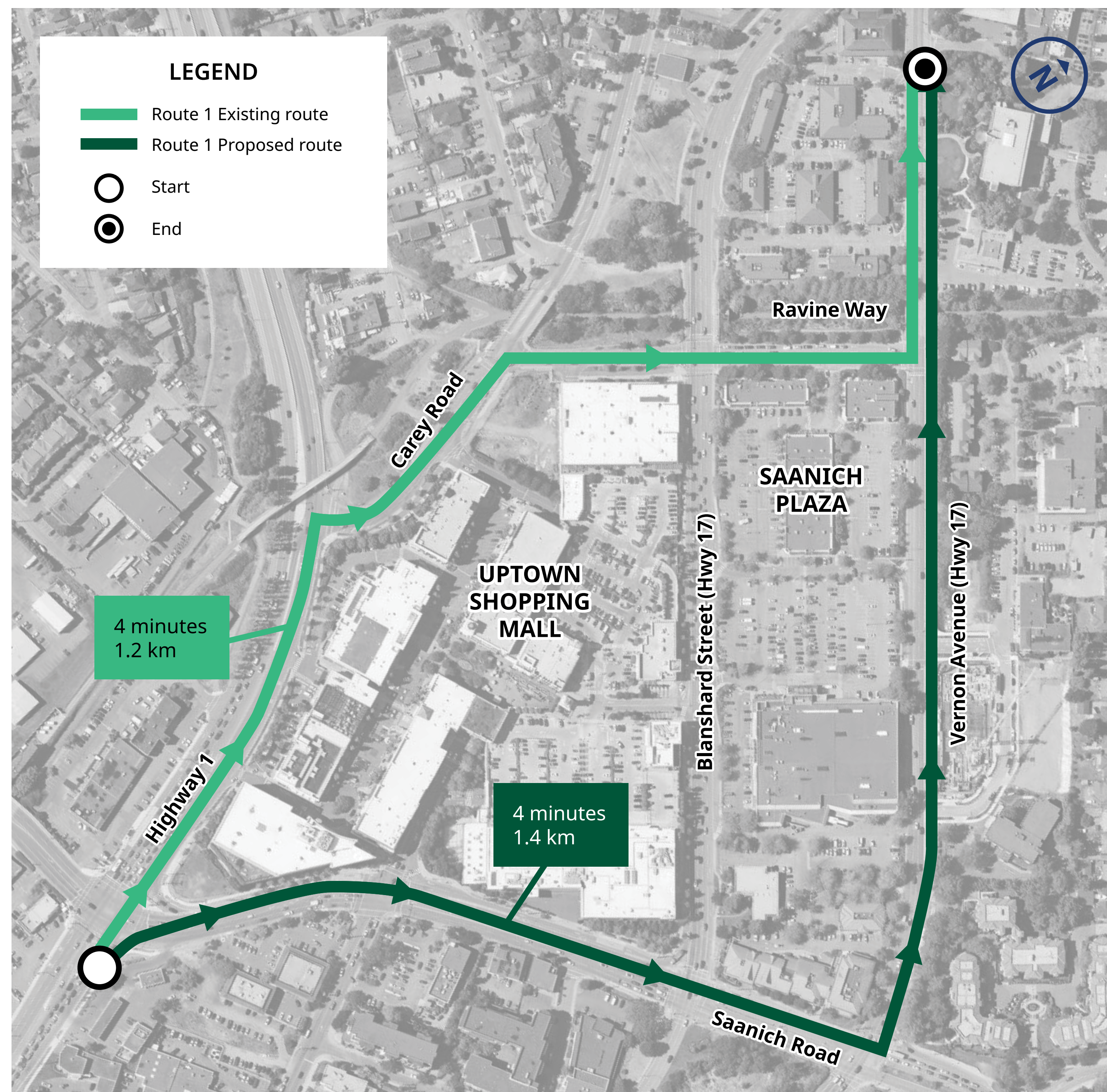
Proposed vehicle movements



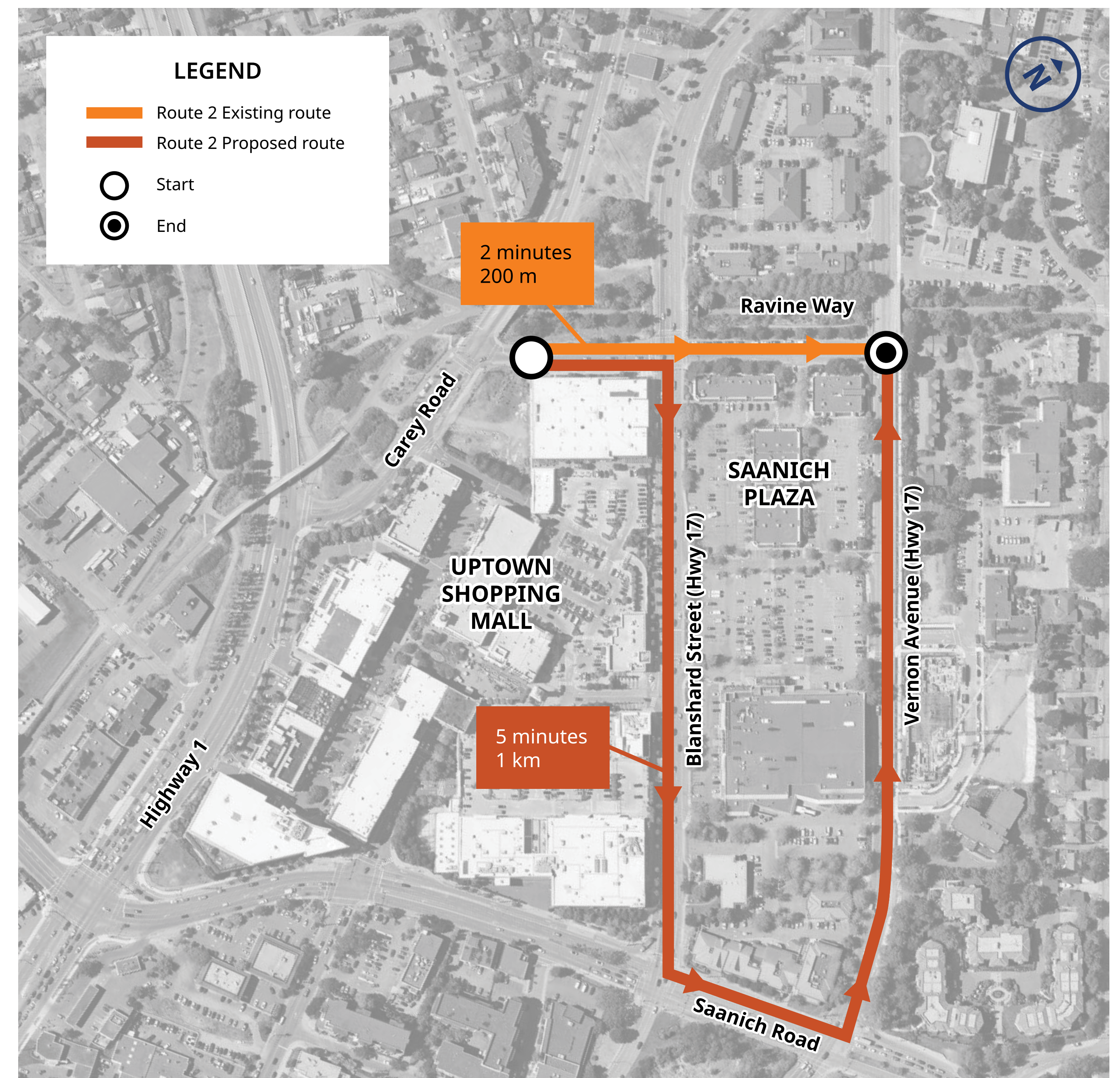
Existing and Proposed Vehicle Movements

- Eastbound general-purpose traffic lane on Ravine Way between Blanshard Street and Vernon Avenue is removed.
- General purpose traffic will need to seek alternate routes as shown below.

Route 1



Route 2



Project Benefits



Improved active transportation:

- Improving connections between active transportation facilities and transit stops by prioritizing pedestrians and cyclists.



Improved travel times:

- Improving transit access and travel time by providing priority for transit movements and clarity for transit users.



Greater connectivity and mobility:

- Enhancing access to transit and connections for walking/cycling between provincial and municipal facilities.
- Supporting modal transfer by creating safe and efficient multimodal connections.



Improved safety:

- Removing vehicular conflicts by maintaining a right-out only access from Saanich Plaza.
- Creating a protected intersection that provides barrier-separated safety for pedestrians, cyclists and rollers from vehicle traffic.



Increased transit network capacity:

- Supporting implementation of RapidBus services at the Uptown Exchange.
- Enhancing Uptown as a critical connector hub within the regional transit network.



Community growth:

- Supporting transit-oriented developments at the Uptown Exchange.
- Supporting the District of Saanich's plan to enhance Uptown as a community hub that has public spaces integrated throughout the area and prioritizes pedestrians.

Next Steps

How your input will be used:

Your feedback will be considered by the Project team in finalizing the Project design, along with technical and financial information, and input from First Nations, key interested parties, residents and businesses.

Following this engagement, the Project team will:

- Review and evaluate all feedback received for design consideration
- Continue engagement with residents, businesses, First Nations and key stakeholders
- Finalize the project design



We welcome your input

- Complete a comment card and share with the Project team
- E-mail your feedback:
TRAN.WEBMASTER@gov.bc.ca
- Visit the Project page:
gov.bc.ca/highway17ravineway