



R.W. Bruhn Bridge and Approaches Winter 2026 Newsletter



This Highway 1 four-laning project includes approximately 1.9 km of Highway 1 four-laning, replacement of the existing R.W. Bruhn Bridge with a new four-lane bridge and intersection improvements between Old Sicamous Road and Silver Sands Road.

What's happened so far?

We recently passed the one-year mark of R.W. Bruhn Bridge and Approaches Project construction. Key progress areas since our last newsletter (summer 2025) include:

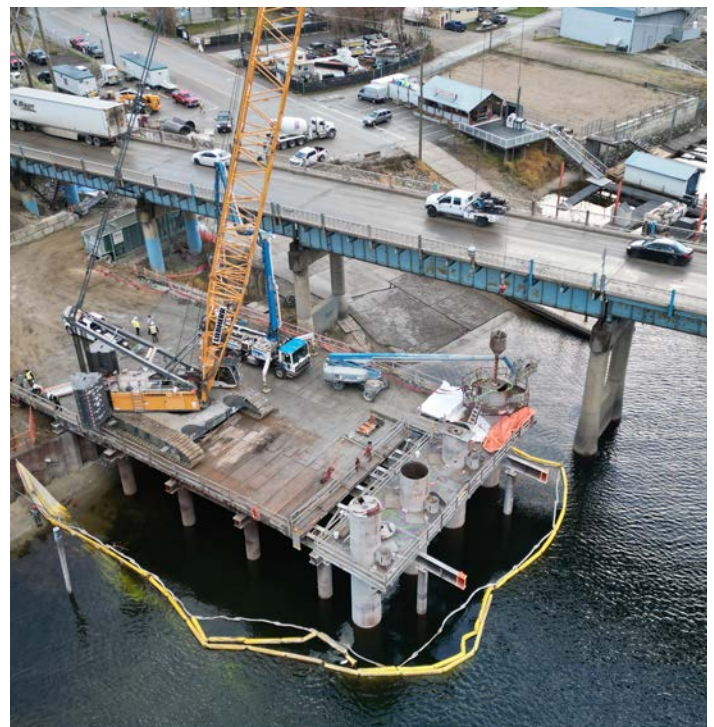
Bridge foundation work

Pile driving and concrete infill is complete for the new R.W. Bruhn Bridge piers. Piling is one way to create deep foundations. Large metal pipes are driven or drilled into the ground beneath the lakebed and filled with concrete to create the new bridge piers. In October 2025, crews placed a horizontal pier cap on top of the completed pier on the west side of the narrows, creating a level platform for the bridge girders that will be installed during later stages of construction. The pier cap helps evenly distribute the weight of the bridge across all piers.

Additional piling and bridge substructure activities on the east side of the bridge were completed in December 2025. For safety reasons, the sidewalk across the bridge is closed until the new bridge construction is completed. Cyclists and pedestrians wishing to cross the bridge can use the [shuttle service](#) that is provided on-demand 24/7 when the bridge is open to traffic.



Pile driving for Pier #4 on the original R.W. Bruhn Bridge (June 1962)



Pier construction on the new R.W. Bruhn Bridge (December 2025)

Community engagement

On September 4, 2025, the R.W. Bruhn Bridge and Approaches Project hosted the Building Bridges Barbeque in collaboration with the District of Sicamous. More than 200 people attended to learn more about the project and meet the team. The project team also attended the Sicamous Farmers' Market on August 15, 2025, to speak to members of the Sicamous community about the project and the return of daytime full closures, and to host a popsicle stick bridge building activity. In late November, the project team and the District of Sicamous met with residents living on the west side of the bridge to discuss access during full closures and provide options for shifting the opening times.

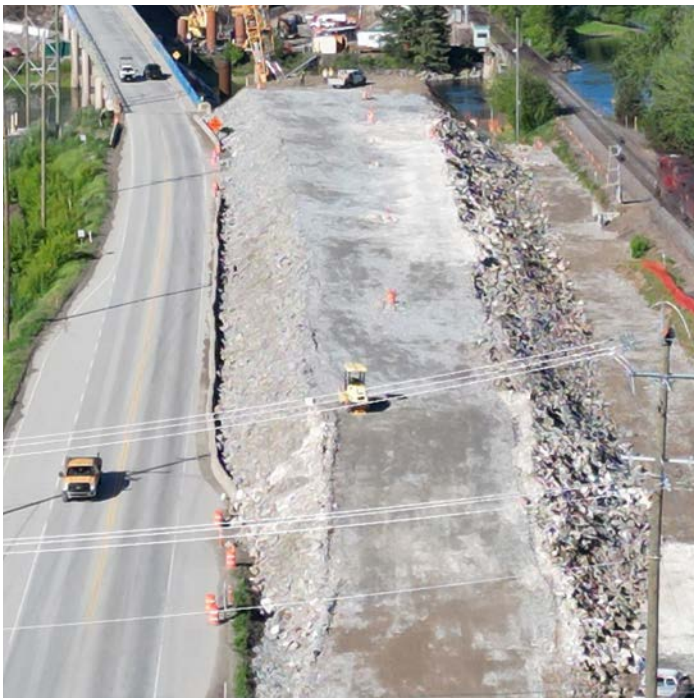


Building Bridges Barbeque (September 2025)

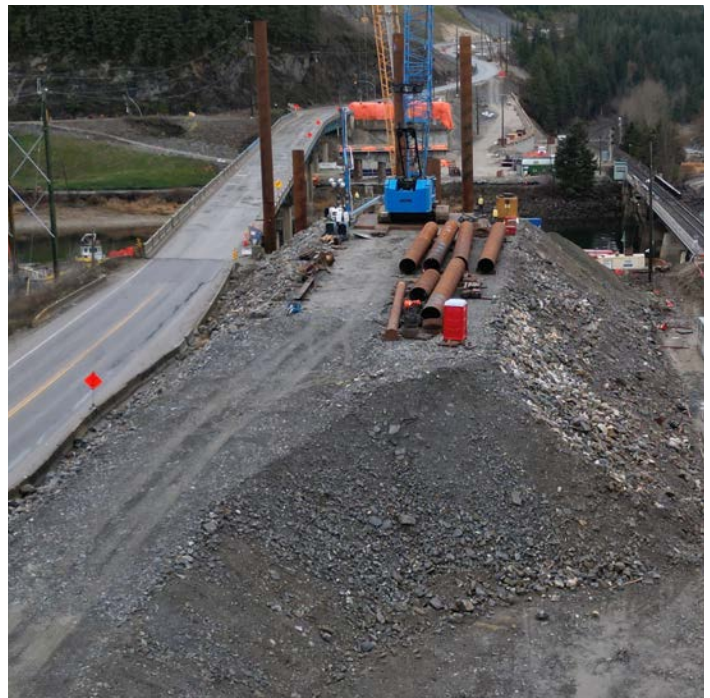
Preload and surcharge placement

Preloading is the term used to describe strengthening the ground by placing a load of sand or gravel and letting it settle, compacting the surface area prior to construction so that it is capable of supporting the weight of new infrastructure (in this case, the new bridge). Once preload is placed, it is left dormant until all settling and shifting is complete, and then construction can begin. Surcharge is a form of temporary preload that is used to speed up ground settlement. Surcharge is placed on top of preload and removed when the preload settles to the required height and density.

For the R.W. Bruhn Bridge Project, we are using both preload and surcharge, which can be seen on the east side of the existing bridge adjacent to Highway 1. The surcharge has reached its 180-day placement milestone, and the ground below has finished settling, so removal has begun. Travellers will notice a change in the height of the rock in this area as it is excavated down to meet the level of the future roadway.



Peak surcharge placement (May 2025)



Surcharge levels after significant removal (December 2025)

Upcoming activities

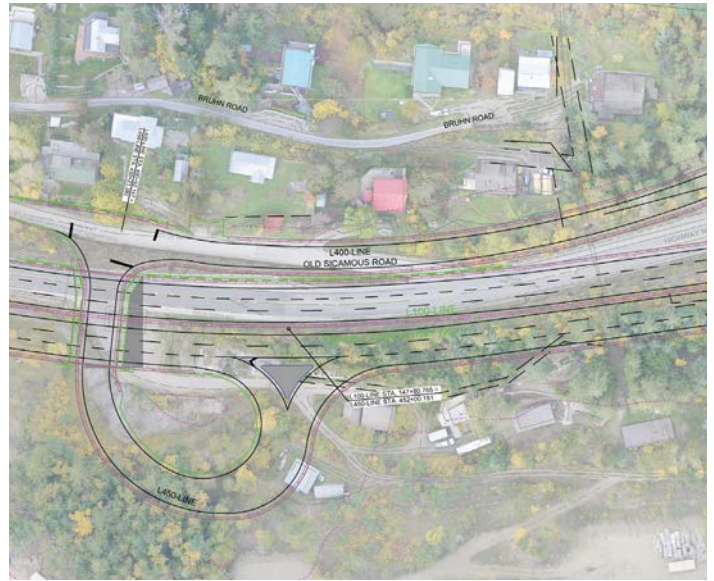
Here's what you can expect to see over the next few months:

Old Sicamous Road Overpass

Once construction of the new R.W. Bruhn Bridge is complete, traffic will flow under the bridge to access Old Spallumcheen Road instead of turning directly off Highway 1. This new access will be located further west, near the current access to Old Sicamous Road. This new access has been in construction over the last several months and excavation for phase two has begun.



Progress on the Old Sicamous Road Overpass (December 2025)



Design drawing of the future Old Sicamous Road Overpass

Fun fact

Why is it called an overpass if it goes under the highway? In highway language, the name of a structure is determined by what the main route does. In this case, Highway 1 goes over the new access road so it's called the Old Sicamous Road Overpass.

Girder manufacturing

Manufacturing of bridge girders, the main horizontal support beams for the new bridge decks, is nearing completion in Armstrong, B.C. The new R.W. Bruhn Bridge will have five lines of girders, each with nine individual segments that will be bolted together in the field, for a total of 45 girder segments. These segments will begin to arrive in Sicamous in the late winter and will be installed in the spring.



A newly fabricated bridge girder segment (September 2025)

Rock drilling and blasting

Blasting activities continue moving closer to the existing R.W. Bruhn Bridge and Highway 1. Some blasts will have approximately one thousand cubic metres of rock dropped down per blast, and extensive scaling and cleaning activities need to take place before Highway 1 can reopen to traffic. These blasts take place during full road closures. For safety reasons, local traffic is restricted to every hour on the hour access when blasting or other work that would otherwise pose a safety risk to the public is occurring.

Retaining walls and foundations

To build up the new roadway to match the current elevation of Highway 1, foundations and retaining walls are being constructed. Continuous placement of concrete wall panels and fill material along with foundation installation will continue throughout the winter.



R.W. Bruhn Bridge west abutment progress (December 2025)

Traffic impacts

A rotating three-week look ahead is available on the [R.W. Bruhn Bridge and Approaches webpage](#). For the latest information on road conditions, please visit [DriveBC](#).

From September 16, 2025 to June 14, 2026, daytime full closures from 9:00 a.m. to 3:00 p.m. and single-lane-alternating-traffic from 8:00 p.m. to 6:00 a.m. are scheduled daily from Monday to Saturday. Please take the alternate route via Highways 97A and 97B when full closures are in effect. Local traffic to/from Old Sicamous Road, Old Spallumcheen Road and surrounding properties will be allowed through the closure zone every hour on the hour. If there is an opportunity to increase access, notice will be distributed to affected residents.

Boat launch and Sicamous Narrows access

The boat launch at the base of the R.W. Bruhn Bridge and Sicamous Narrows is scheduled to remain open for most of the construction period. Limited short-term temporary restrictions will be required for certain activities such as bridge girder and deck installation and to remove sections of the old bridge once the new bridge opens. These activities are planned to take place during winter months, reducing inconvenience for marine traffic. Notice will be provided to residents in advance of any restrictions.