

Trans-Canada Highway 1 RW Bruhn Bridge and Approaches

Project Update

Update to Sicamous Community
Winter 2021

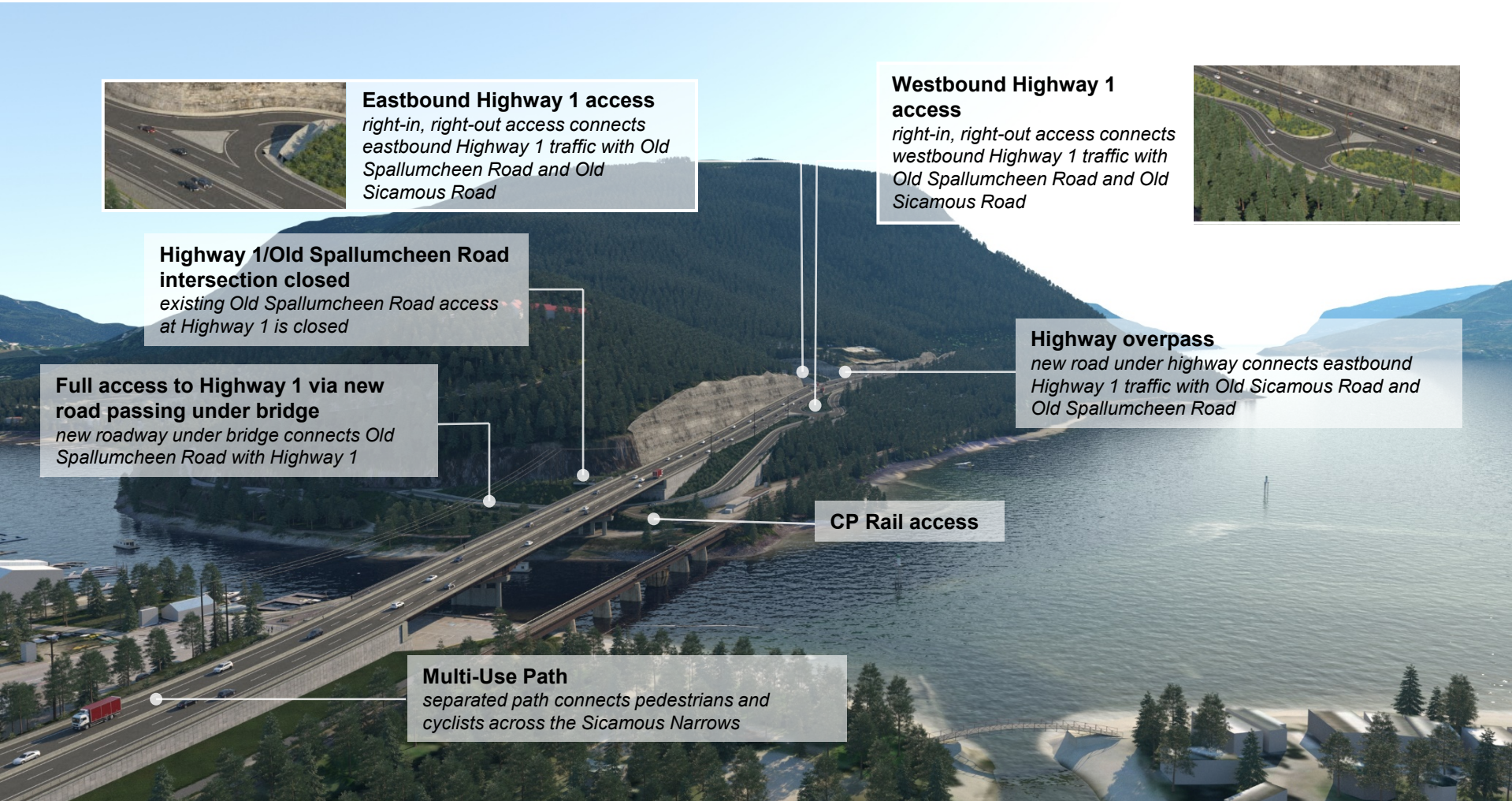


Canada

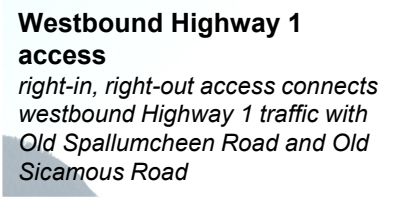
- In February 2018, the ministry held an open house to gather input from the community on replacement options for the RW Bruhn Bridge. For background, you can view the 2018 open house material [here](#).
- In November 2018, \$224.5 million in joint provincial-federal funding was approved for the project. Funding announcement details can be viewed [here](#).
- In December 2018, after extensive consultation, analysis and field work, the ministry identified a one-bridge design for replacement of the RW Bruhn Bridge. The information bulletin can be viewed [here](#).
- The design for the project includes approximately 1.9 km of Highway 1 four-laning, replacement of the existing R.W. Bruhn Bridge with a new four-lane bridge, and intersection improvements between Old Sicamous Road and Silver Sands Road.



Design Overview: West of Sicamous Narrows



Eastbound Highway 1 access
right-in, right-out access connects eastbound Highway 1 traffic with Old Spallumcheen Road and Old Sicamous Road



Westbound Highway 1 access
right-in, right-out access connects westbound Highway 1 traffic with Old Spallumcheen Road and Old Sicamous Road

Highway 1/Old Spallumcheen Road intersection closed
existing Old Spallumcheen Road access at Highway 1 is closed

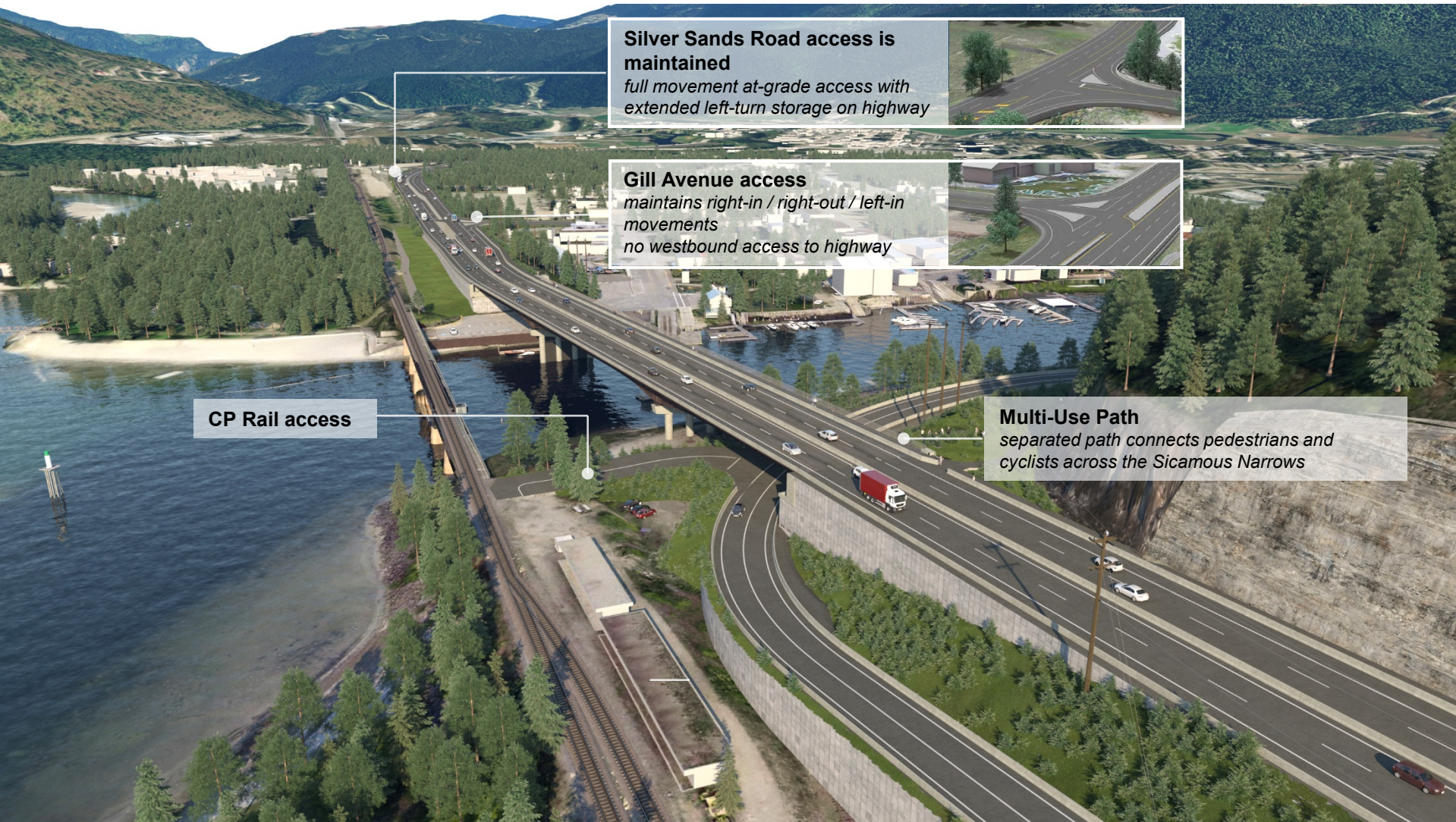
Full access to Highway 1 via new road passing under bridge
new roadway under bridge connects Old Spallumcheen Road with Highway 1

Highway overpass
new road under highway connects eastbound Highway 1 traffic with Old Sicamous Road and Old Spallumcheen Road

CP Rail access

Multi-Use Path
separated path connects pedestrians and cyclists across the Sicamous Narrows

Design Overview: East of Sicamous Narrows



Silver Sands Road access is maintained
full movement at-grade access with extended left-turn storage on highway



Gill Avenue access maintains right-in / right-out / left-in movements
no westbound access to highway



CP Rail access

Multi-Use Path
separated path connects pedestrians and cyclists across the Sicamous Narrows

Since late 2018, the ministry has completed the following work:

- independent engineering review
- property acquisition
- relocation plans for impacted utilities
- geotechnical investigation
- archaeological assessment
- environmental assessment
- hydrological assessment
- design progression
- constructability review
- timber assessment
- navigable waters permit application
- environmental approval application
- engagement with local government staff on impacts to municipal infrastructure
- engagement with Splatstin leadership and staff
- engagement with the Pespesellkwe

Current Status and Next Steps

A three-year construction period is anticipated for the project, with tree-clearing and utility relocation planned in 2021 and construction tender targeted in 2022.

As engagement continues with Indigenous communities, the ministry is working in partnership with Splitsin to finalize the design, given the cultural significance of the project area and the need to minimize impacts.



Next Steps:

- Complete geotechnical investigation
- Complete archaeological mitigation assessments
- Continue technical engagement
- Complete property acquisitions
- Obtain environmental approvals
- Continued updates on the public website
- Complete tender documents and drawings
- Initiate clearing and brushing

For more information, please visit: www.gov.bc.ca/bchwy1-bruhn

For questions or comments, please email: rwbruhnbridge@gov.bc.ca