

# Welcome

*We respectfully acknowledge that the Highway 20 at Hodgson/Dog Creek Road Project is taking place on the territory of the Williams Lake First Nation.*

## Highway 20 at Hodgson/Dog Creek Road Project Public Information Session

This Public Information Session is being held to provide you with information regarding the Highway 20 at Hodgson/Dog Creek Road Project and the opportunity to ask questions to project team members.

To provide your feedback or submit enquiries to the project team, contact Reid Drummond, Project Manager, at:



Email: [HodgsonDog.Creek@gov.bc.ca](mailto:HodgsonDog.Creek@gov.bc.ca)



Phone: **250-299-1494**



Website: [gov.bc.ca/cariboo](http://gov.bc.ca/cariboo)



The area of this project includes the Hodgson Slide and Dog Creek Slide.

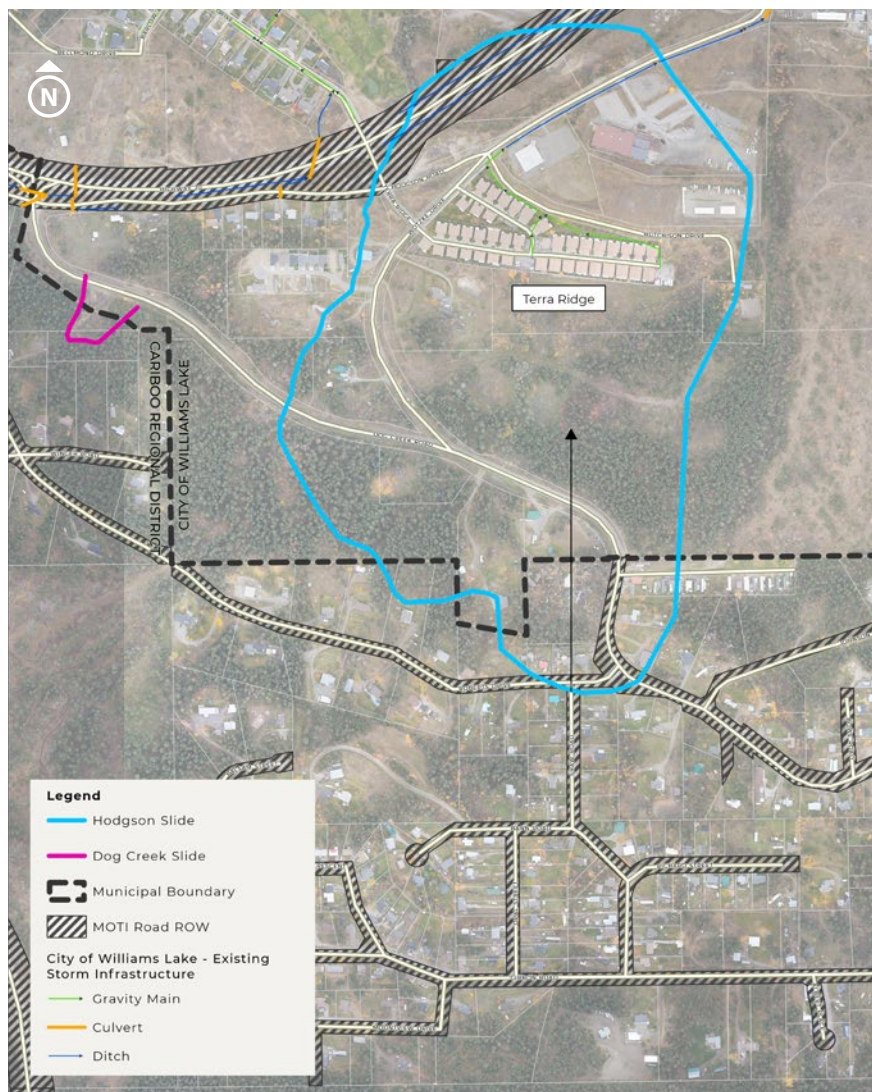
# Project Overview

Two slides are included in the Highway 20 at Hodgson/Dog Creek Road Project:

- The Hodgson Slide, an “ancient”, slow-moving slide located mostly south of Highway 20
- The smaller Dog Creek Slide, west of the Hodgson Slide

The Ministry of Transportation and Infrastructure (MOTI) is working with the City of Williams Lake and Cariboo Regional District to develop mitigation options for the Hodgson and Dog Creek slides. The delivery of these mitigations will involve MOTI, the City of Williams Lake and the Cariboo Regional District.

The surface area of the Hodgson Slide (55 hectares) is 9 times the size of the Williams Lake Stampede Grounds.



Most of the Hodgson Slide is located in the City of Williams Lake. The Dog Creek Slide is split between City and Cariboo Regional District jurisdiction.

# Multiple Jurisdictions Involved

A multi-jurisdiction ownership approach is in place for this project. The Cariboo Regional District, City of Williams Lake and MOTI are working together to address these complex slides.

As part of the multi-jurisdictional approach, a Management Steering Committee has been established and is comprised of representatives from:

- ▶ Cariboo Regional District
- ▶ City of Williams Lake
- ▶ Ministry of Emergency Management and Climate Readiness
- ▶ Ministry of Water, Land and Resource Stewardship
- ▶ Ministry of Municipal Affairs
- ▶ MOTI

A Technical Liaison Group, which includes the groups above as well as Williams Lake First Nations and FortisBC, has also been established.



## Highway 20 at Hodgson/Dog Creek Road Project

# Work Done to Date

Work completed to date has included:

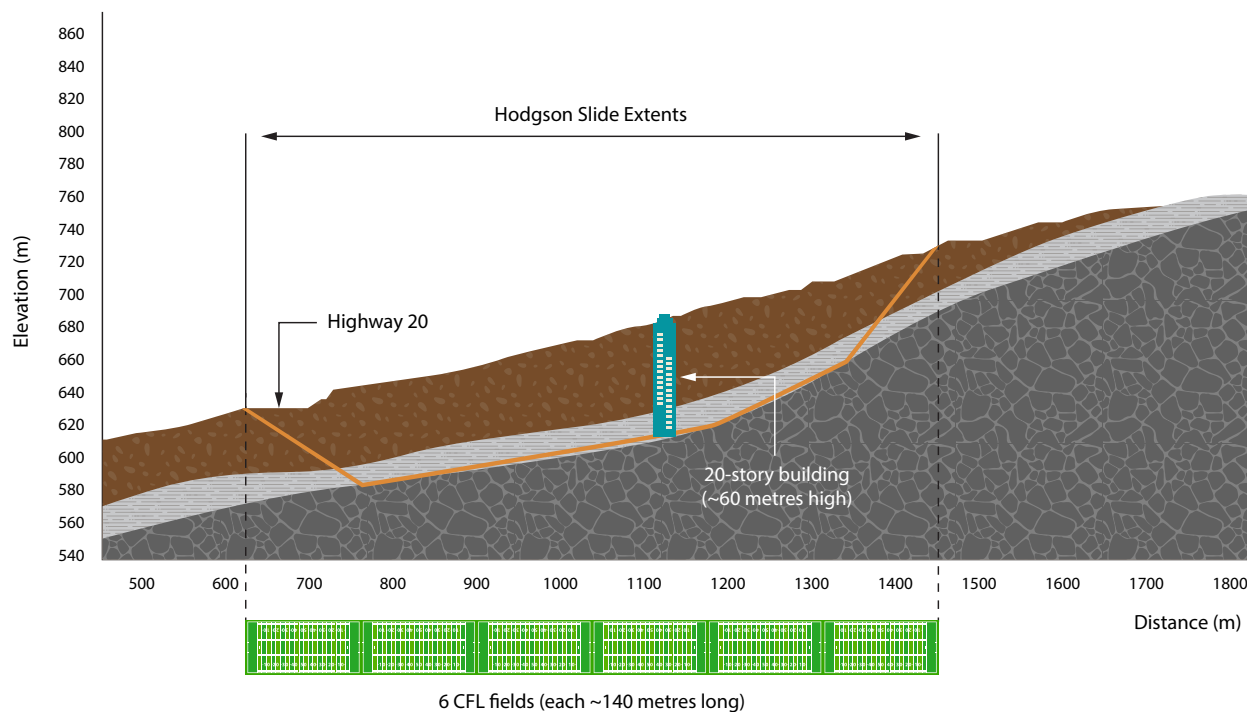
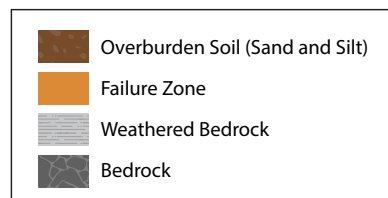
- Drilling 30 boreholes as deep as 74 metres to gather data to inform next steps
- Installing over 25 pieces of instrumentation in these boreholes to measure movement and groundwater pressure
- Testing of groundwater
- Resurfacing of Highway 20
- Repaving of the Dog Creek Road intersection at Roberts Drive and Johnson Way
- Enhancing groundwater drainage through improvements to ditches and up-sizing or installing new culverts



# Characterization of Risk – Hodgson Slide

Historical and recent data and analysis of the large, complex slide shows movement is very slow and the risk to public safety is low.

- Ongoing monitoring of the area indicates the Hodgson Slide does not move as a single mass; slide movement ranges from 0 to 0.5 metres per year at ground level
- Most slide movement has happened at the north end of the slide, near Highway 20
- Highway 20 and surrounding roads continue to be impacted and the ministry will address those impacts on an ongoing basis to provide safe access
- Impacts to infrastructure other than roads is expected to continue to progress at a rate similar to what has been seen in the past



# Dog Creek Slide

Similar to the characterization of the Hodgson Slide, the risk to public safety as a result of the Dog Creek Slide is low.

- This includes existing utilities and roads near the slide as well as homes, given the distance from the top of the slide to the nearest house
- Analysis shows the top of the slide regressed approximately 1.5 metres per year in 2021 and 2022
- This regression is potentially higher due to two heavy rainfalls, one in November 2021 and the other in June 2022
- No movement was observed from July 2022 to October 2022



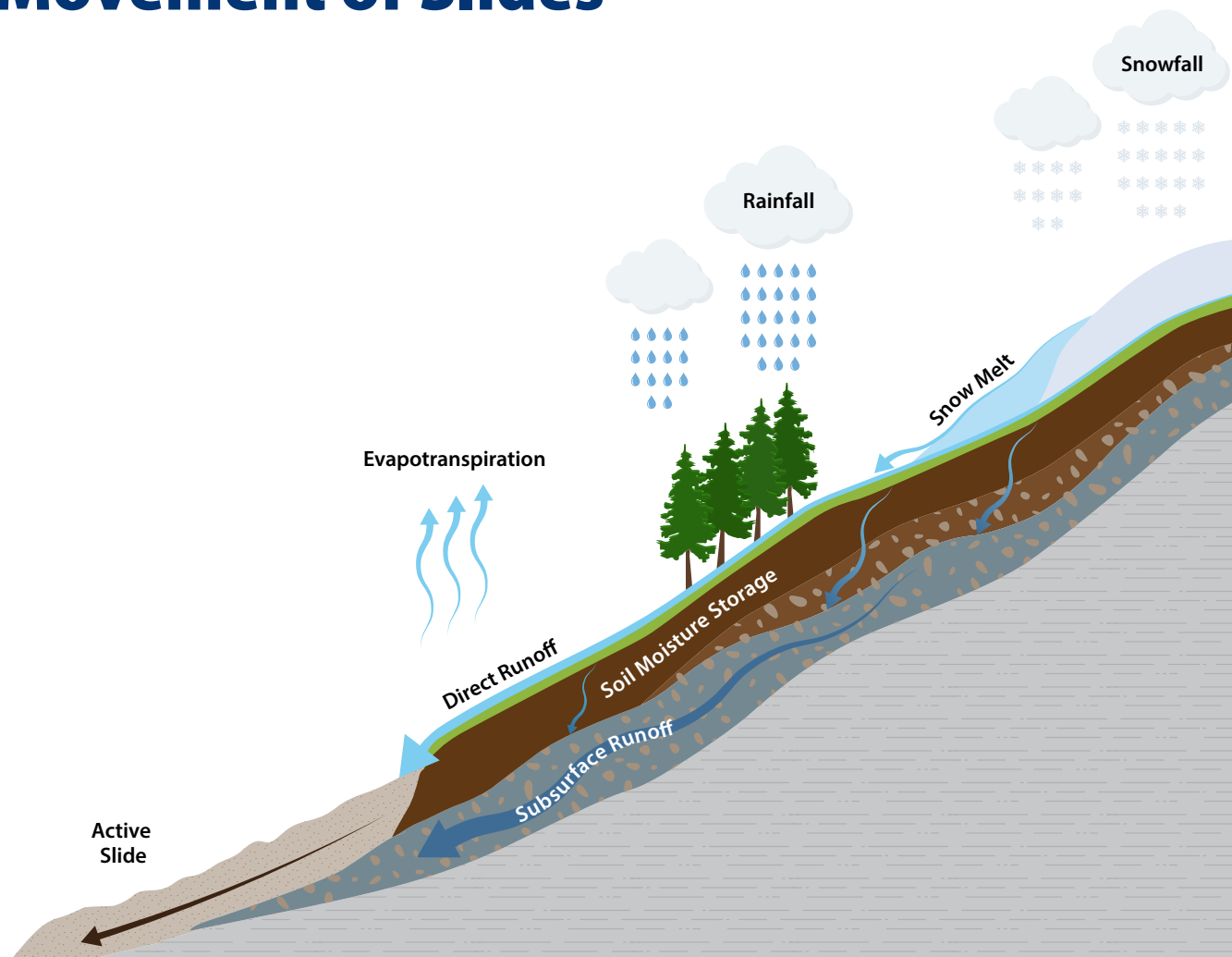
Photo taken from Dog Creek Road, at the bottom of the Dog Creek Slide.

# How Water Impacts Movement of Slides

Slide activity is linked to changes in groundwater conditions with greater movement generally occurring in the spring due to heavy rainfall and snow melt.

The impacts of groundwater on a slide informs potential options to mitigate movement.

The volume of material (soil, rock and debris) moved as a result of the Hodgson and Dog Creek slides is 36 million m<sup>3</sup>, enough to fill nearly 14 BC Places.



# Project Approach

This project is taking a three-step approach:

1. Surface water management, including improvements to the existing surface drainage system
2. Hodgson Slide mitigation options development
3. Dog Creek Slide mitigation options development



# Surface Water Management

Overland water management has been identified as a contributor to these slides. Implementation of Phase 1 of the surface water management strategy started this fall. This work includes upgrades to existing infrastructure to support the movement of rainwater and snow melt from the upslope area of the slides to the downslope areas.

This work is intended to accomplish the following:

- Eliminate areas of standing water
- Redirect surface flows into public rights-of-way, primarily roadside ditches
- Ensure effective flow routes through the slide area

More onsite work to implement this strategy is anticipated in 2024.



Phase 1 work includes the clearing and widening of ditches within the Hodgson Slide area.



The green line above shows the area of focus for Phase 1 work. The project team is collaborating with the City of Williams Lake to ensure downstream infrastructure can handle a potential change in the rate of water flows.

# Hodgson Slide Mitigation Options Development

Concepts that are being considered to mitigate effects from the Hodgson Slide include:

- Additional upgrades to existing drainage infrastructure in the slide area, to improve surface water flow
- Studying the effects of groundwater dewatering in the slide area

More information on a final, approved approach is anticipated in 2024.

# Dog Creek Slide Mitigation Options Development

Concepts that are being considered to mitigate effects from the Dog Creek Slide include:

- Flattening the top of the slide
- Construction of a berm at the bottom of the slide to prevent movement
- Armouring, or placement of large rock in seepage areas

More information on a final, approved approach is anticipated in 2024.

## First Nations Consultation

The ministry is consulting and engaging with Williams Lake First Nation on this project.

Williams Lake First Nation is part of the project's Technical Liaison Group.

We continue to work with Williams Lake First Nation to better understand the cultural, archaeological and environmental aspects related to the proposed project work.

# Project Communications

As this project proceeds, a variety of tools will be used to inform residents and road users of project updates and onsite work that may impact traffic, including the following:

Project website updates/  
notifications



Social media posts (TranBC)



Changeable message signs



Email notifications



# Thank You for Attending

Thank you for attending this Public Information Session. If you have feedback or would like to submit a question please contact one of the following:

### Project Team:



Email: [HodgsonDog.Creek@gov.bc.ca](mailto:HodgsonDog.Creek@gov.bc.ca)



Phone: **250-299-1494**

### City of Williams Lake:



Phone: **250-392-2311**

### Cariboo Regional District:



Email: [mailbox@cariboord.ca](mailto:mailbox@cariboord.ca)



Phone: **250-392-3351**



Aerial view of the Hodgson Slide area, looking north toward downtown Williams Lake.

Project details continue to be refined and confirmed. For the latest information or to learn more about the project, scan the QR code.

