
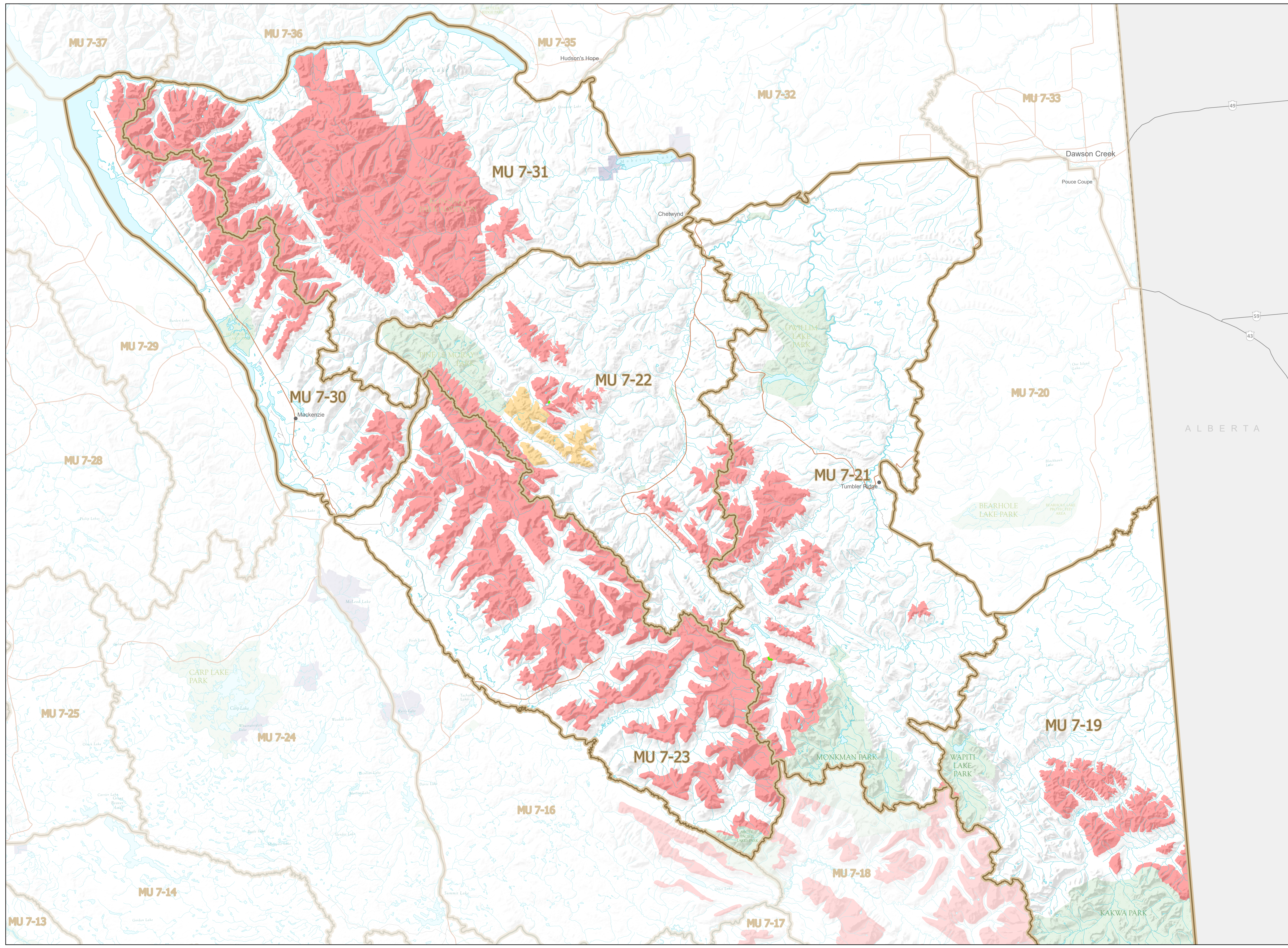


WILDLIFE ACT
SNOWMOBILE
CLOSURES

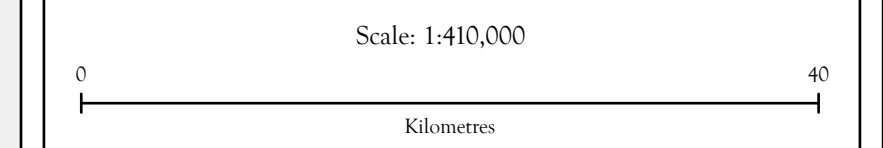
Map No. 5-6/24
Northern Rockies

Effective year round, in those portions of M.U.s 7-19,
7-21, 7-22, 7-23, 7-30, and 7-31.

-  Trail open year round
-  Closed Year Round
-  Seasonal Closure Jan 15 to Sept 30
-  Wildlife Management Unit
-  Indian Reserve
-  Provincial Park / Protected Area / Ecological Reserve



This map is a georeferenced PDF that can be imported into mobile hardware such as a smartphone or tablet for viewing in third party applications.



Intended plot size for this map is 34x22 inches

Produced for: Wildlife and Habitat Branch
Produced by: GeoBC on 2024-06-06

