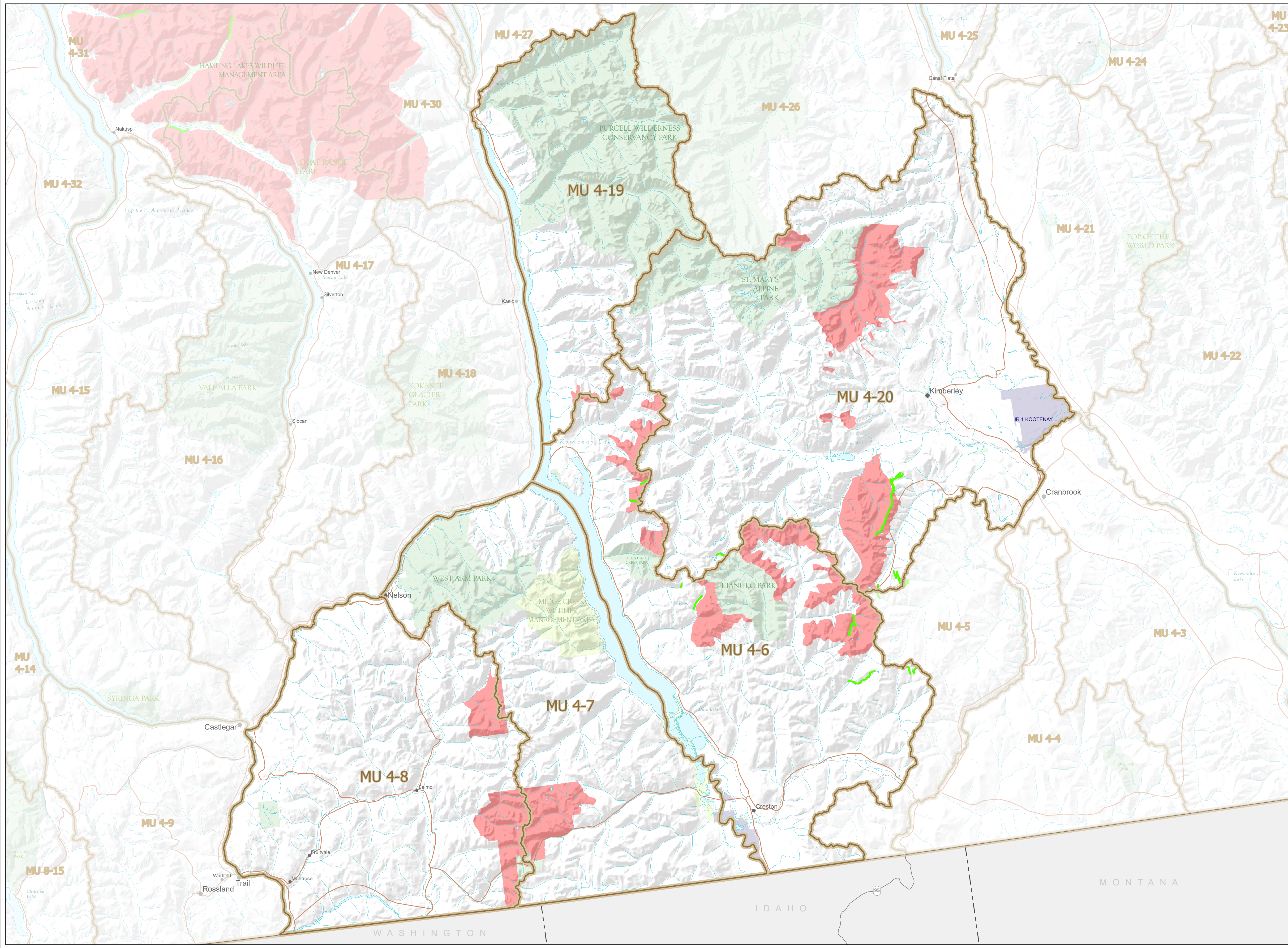


WILDLIFE ACT SNOWMOBILE CLOSURES

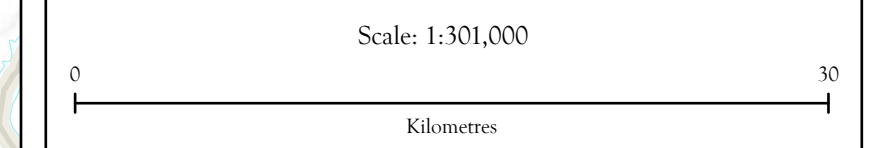
Map No. 5-5/23
Southeast Kootenay

Effective year round, in those portions of M.U.s 4-6,
4-7, 4-8, 4-19 and 4-20.

- Trail open year round
- Closed Year Round
- Wildlife Management Unit
- Indian Reserve
- Provincial Park / Protected Area / Ecological Reserve
- Wildlife Management Area / Conservation Area



This map is a georeferenced PDF that can be imported into mobile hardware such as a smartphone or tablet for viewing in third party applications.



Intended plot size for this map is 34x22 inches

Produced for: Wildlife and Habitat Branch
Produced by: GeoBC on 2023-09-28

