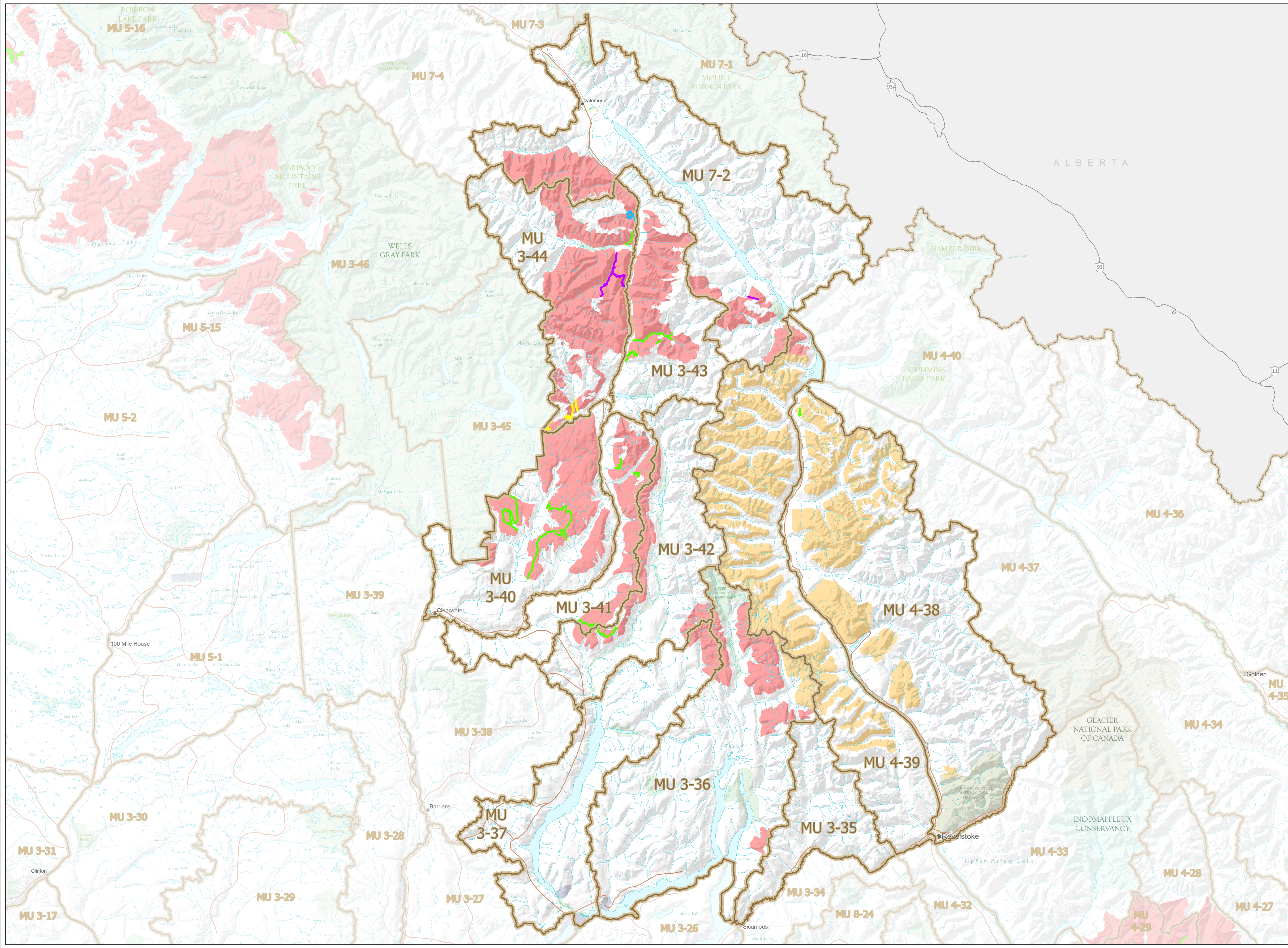


WILDLIFE ACT SNOWMOBILE CLOSURES

Map No. 5-3/23

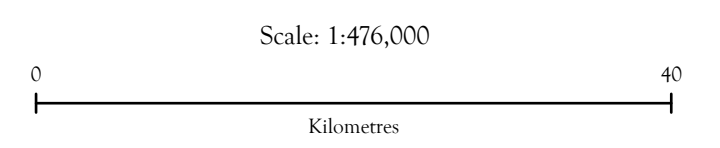
Wells Gray/Thompson/
Revelstoke/Shuswap

Effective year round, in those portions of M.U.s 3-35,
3-36, 3-37, 3-40 to 3-44, 4-38, 4-39 and 7-2.



- Trail open year round
- Trail open Nov 1 to May 31
- Trail open Nov 15 to Apr 15
- Trail open Dec 1 to May 31
- Closed Year Round
- Seasonal Closure Jan 1 to Apr 15
- Wildlife Management Unit
- Indian Reserve
- Provincial Park / Protected Area / Ecological Reserve

This map is a georeferenced PDF that can be imported into mobile hardware such as a smartphone or tablet for viewing in third party applications.



Intended plot size for this map is 34x22 inches

Produced for: Wildlife and Habitat Branch
Produced by: GeoBC on 2023-10-31

