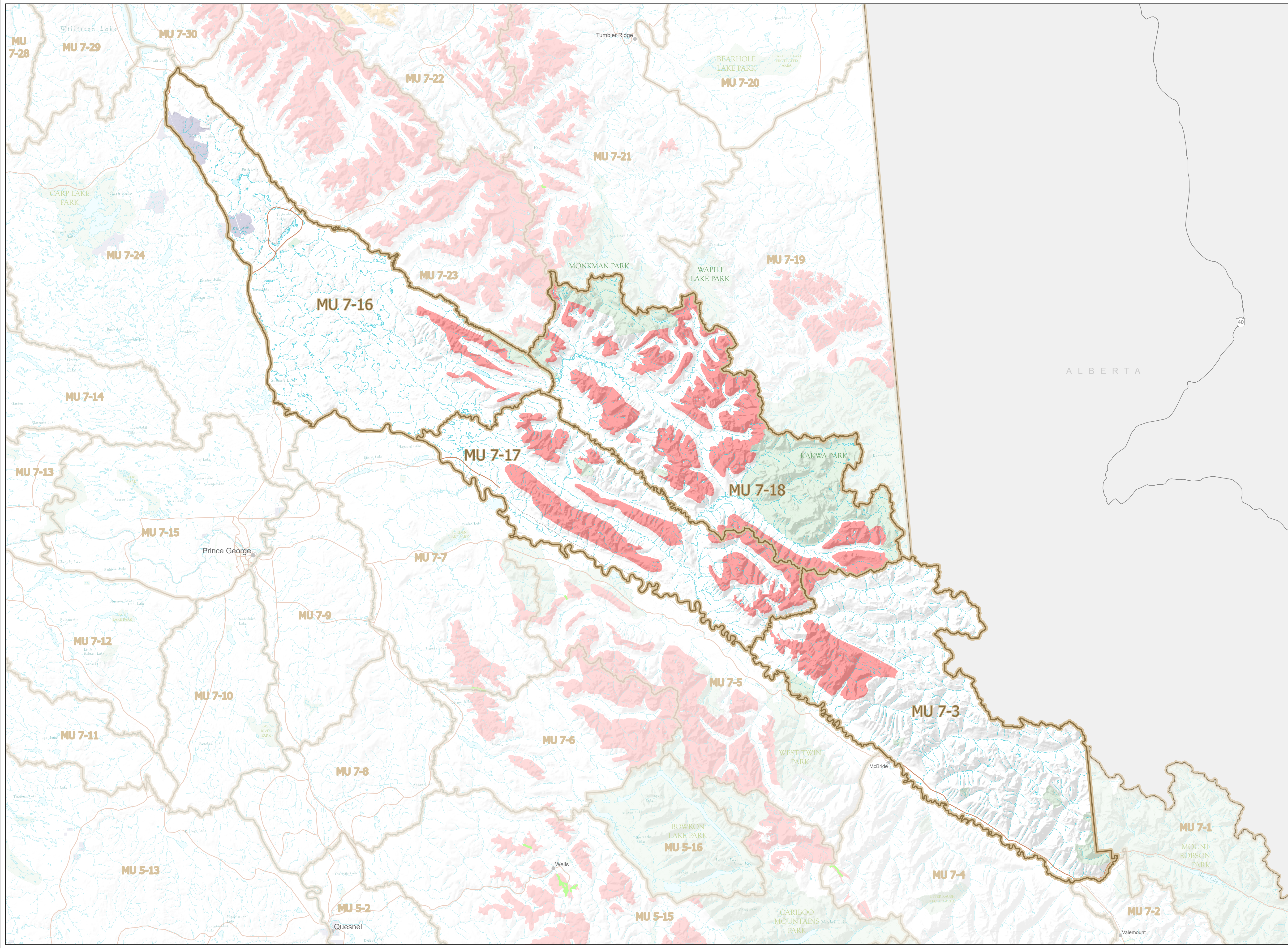


# WILDLIFE ACT SNOWMOBILE CLOSURES

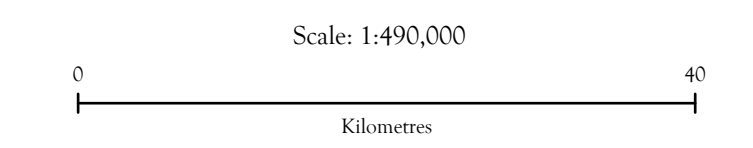
Map No. 5-1/23  
Hart Ranges

Effective year round, in those portions of M.U.s 7-3,  
7-16, 7-17, and 7-18.

- Closed Year Round
- Wildlife Management Unit
- Indian Reserve
- Provincial Park / Protected Area / Ecological Reserve



This map is a georeferenced PDF that can be imported into mobile hardware such as a smartphone or tablet for viewing in third party applications.



Intended plot size for this map is 34x22 inches

Produced for: Wildlife and Habitat Branch  
Produced by: GeoBC on 2023-08-31

