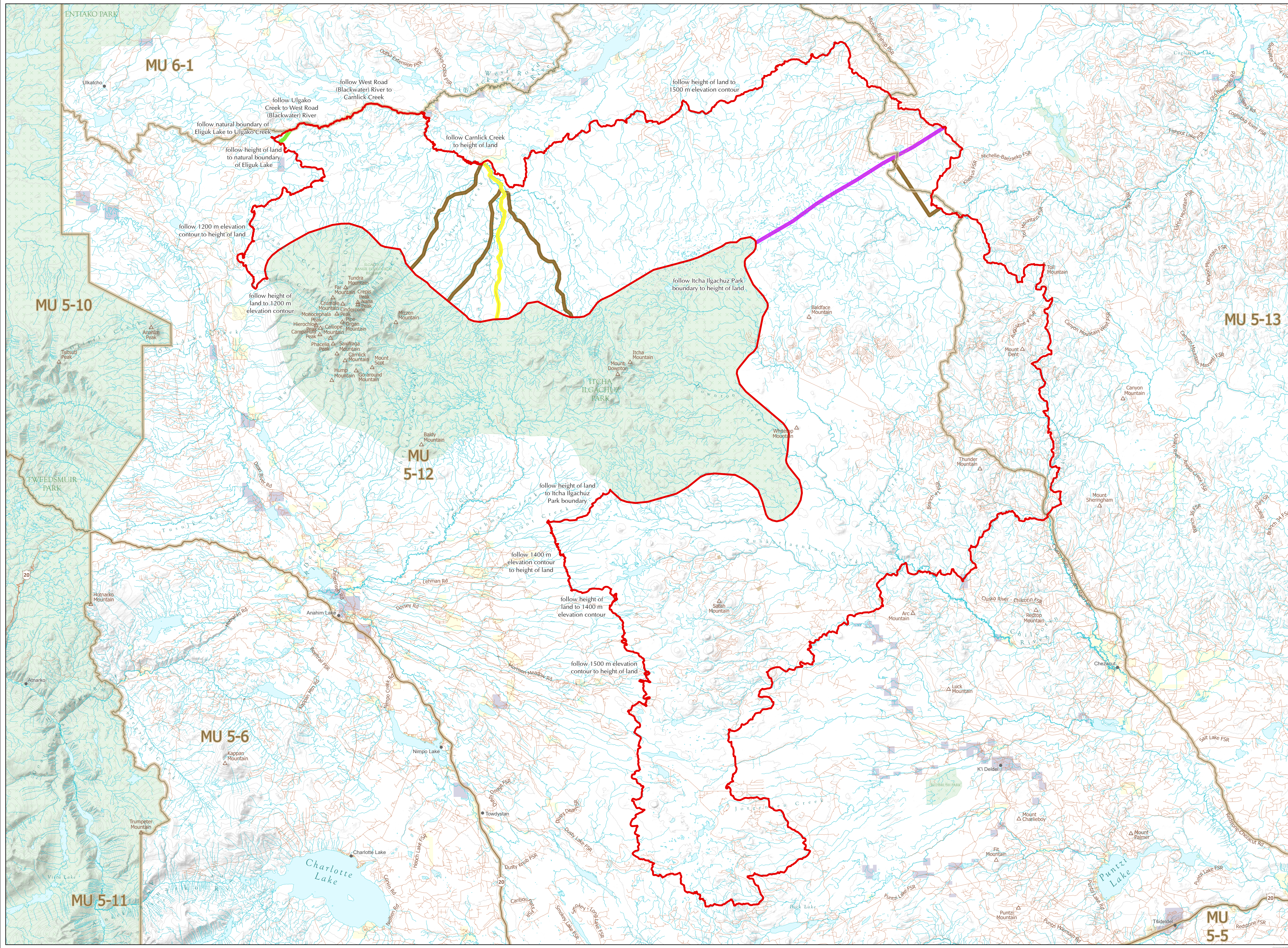


# WILDLIFE ACT MOTOR VEHICLE PROHIBITION REGULATION

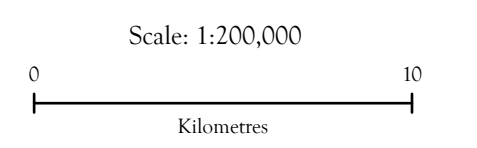
Map No. 1-83/24  
Itcha Ilgachuz

Motor Vehicle Closed Areas  
Closed Year Round

- ▭ Motor Vehicle Prohibition Area (Closed Year Round)
- ▭ Wildlife Management Unit
- ▭ Indian Reserve
- ▭ Provincial Park / Protected Area / Ecological Reserve
- ▭ Private Land \*
- ▭ Roads Open Year Round
- ▭ Trails Open January 1 - December 31 (Snowmobile Use Only)
- ▭ Trails Open August 1 - August 31 (ATV and Electric Bicycle Use Only)
- ▭ Trails Open December 15 - April 30 (Snowmobile Use Only)



This map is a georeferenced PDF that can be imported into mobile hardware such as a smartphone or tablet for viewing in third party applications.  
\*Land ownership is a visual representation of land parcels in ParcelMap BC. Contact the Land Title and Survey Authority for current information on land ownership.



Intended plot size for this map is 34x22 inches

Produced for: Wildlife and Habitat Branch  
Produced by: GeoBC on 2024-05-29

