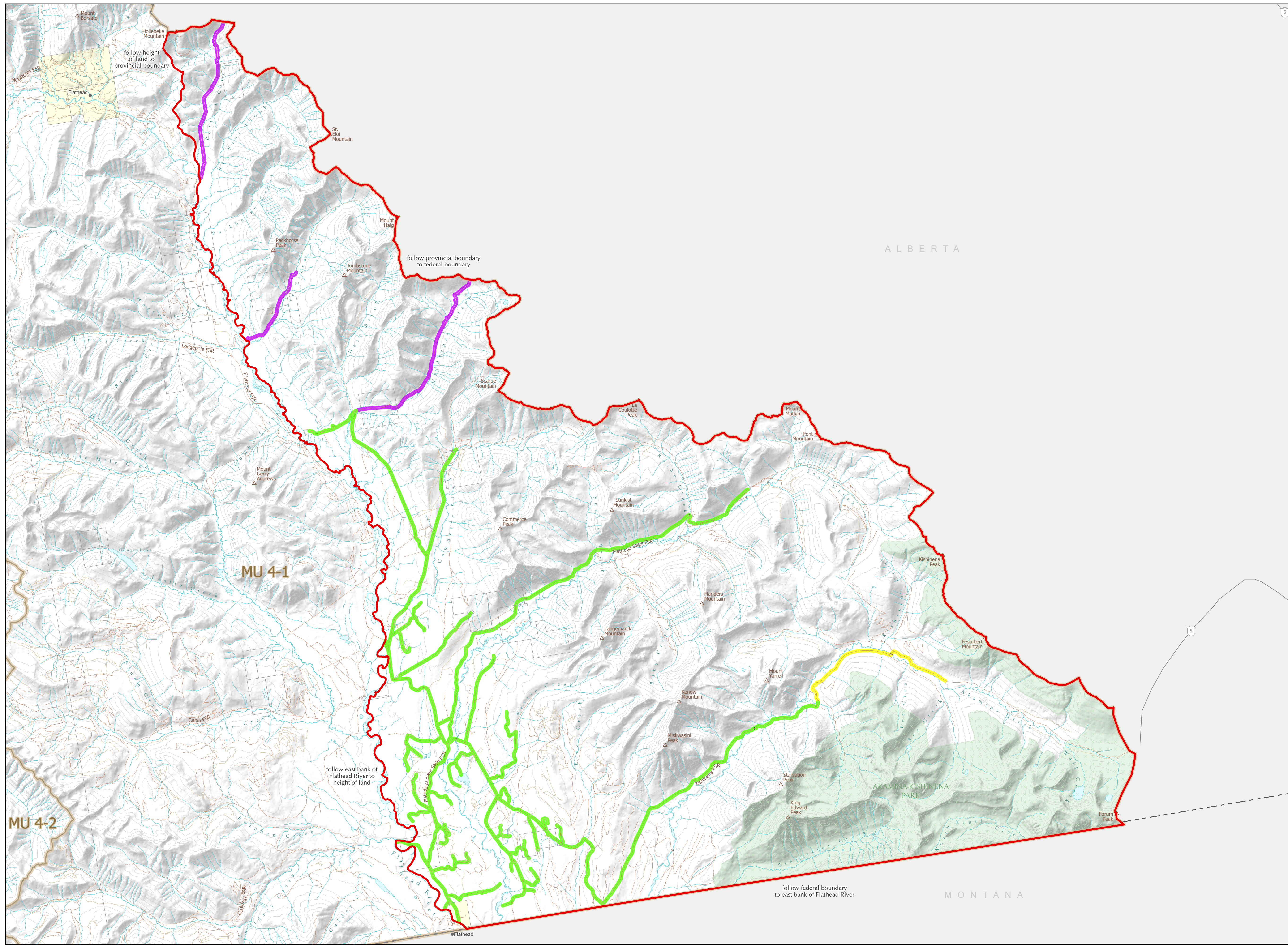


W I L D L I F E A C T
M O T O R V E H I C L E
P R O H I B I T I O N R E G U L A T I O N

Map No. 1-61/23
Flathead River Eastside, Akamina
Creek and Kishinena Peak

Motor Vehicle Closed Areas
Closed Year Round

- ▭ Motor Vehicle Prohibition Area (Closed Year Round)
- Wildlife Management Unit
- Provincial Park / Protected Area / Ecological Reserve
- Private Land *
- ▬ Roads Open Year Round
- ▬ Roads Open June 7 - September 9
- ▬ Roads Open November 1 - May 31 (Snowmobile Use Only)



ALBERTA

MONTANA

This map is a georeferenced PDF that can be imported into mobile hardware such as a smartphone or tablet for viewing in third party applications.
*Land ownership is a visual representation of land parcels in ParcelMap BC. Contact the Land Title and Survey Authority for current information on land ownership.

Scale: 1:80,000

Intended plot size for this map is 34x22 inches

Produced for: Wildlife and Habitat Branch
Produced by: GeoBC on 2023-08-01



MU 4-2

MU 4-1

follow height of land to provincial boundary

follow provincial boundary to federal boundary

follow east bank of Flathead River to height of land

follow federal boundary to east bank of Flathead River