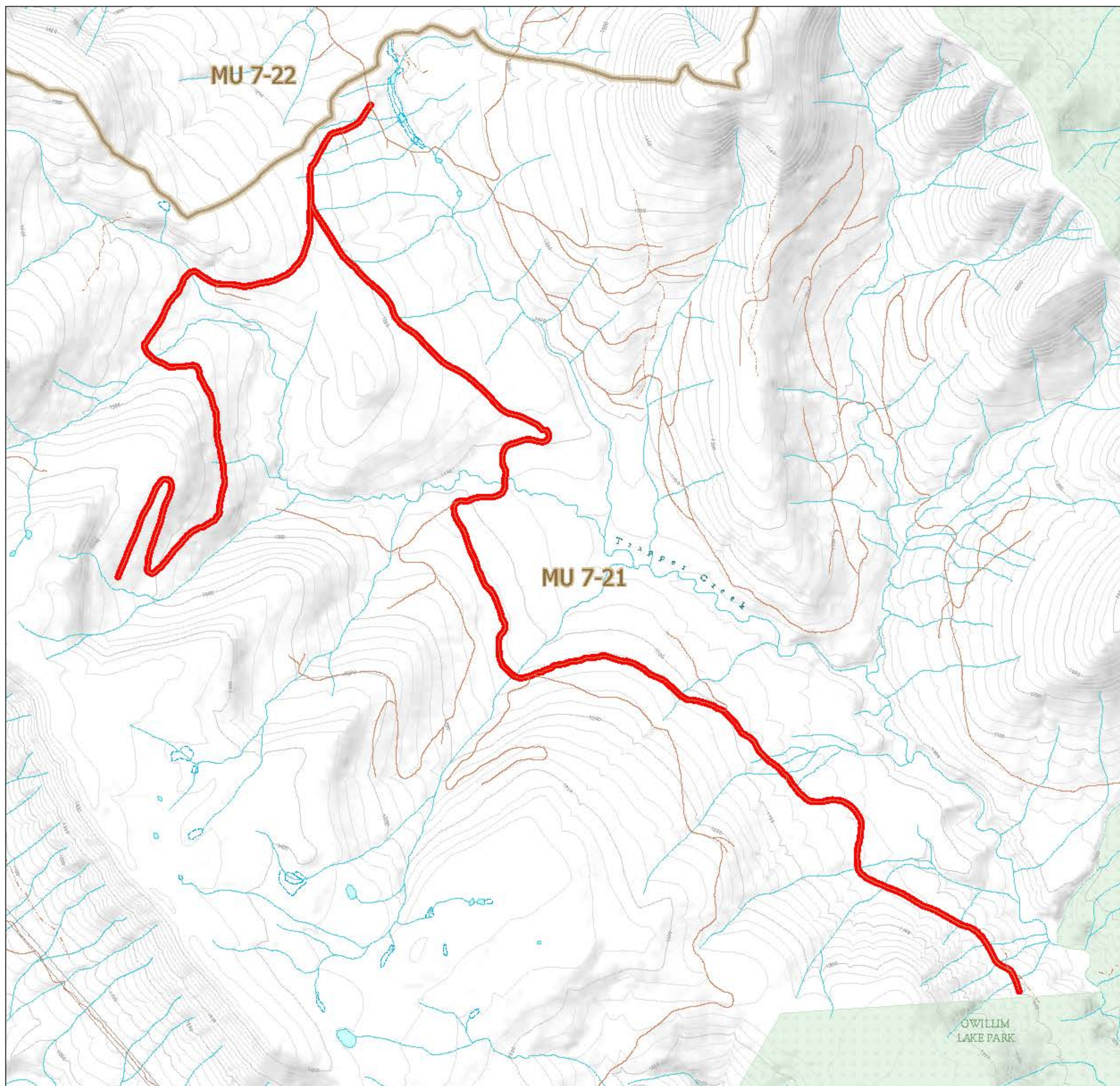


WILDLIFE ACT MOTOR VEHICLE PROHIBITION REGULATION

Map No. 1-117/20
Trapper Mountain

Motor Vehicle Closed Areas
Road Closure

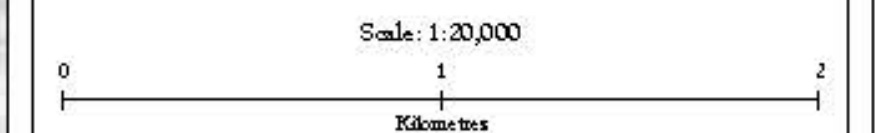


- Wildlife Management Unit
- Provincial Park / Protected Area / Ecological Reserve
- Roads Closed Year Round

This map represents the area which prohibits the use of motor vehicles. For other boundary information including, but not limited to, LEH zones, management unit boundaries, and no hunting/shooting areas, refer to the appropriate regulations.

These maps are a georeferenced PDF so that it can be imported into mobile hardware such as a smartphone or tablet for viewing in third party applications.

*Land ownership is a visual presentation of land parcels in TimeMap BC. Contact the Land Title and Survey Authority for current information on land ownership.



Intended plot size for this map is 22x17 inches

Produced for Wildlife and Habitat Branch
Produced by: GeoBC on 2020/04/24

