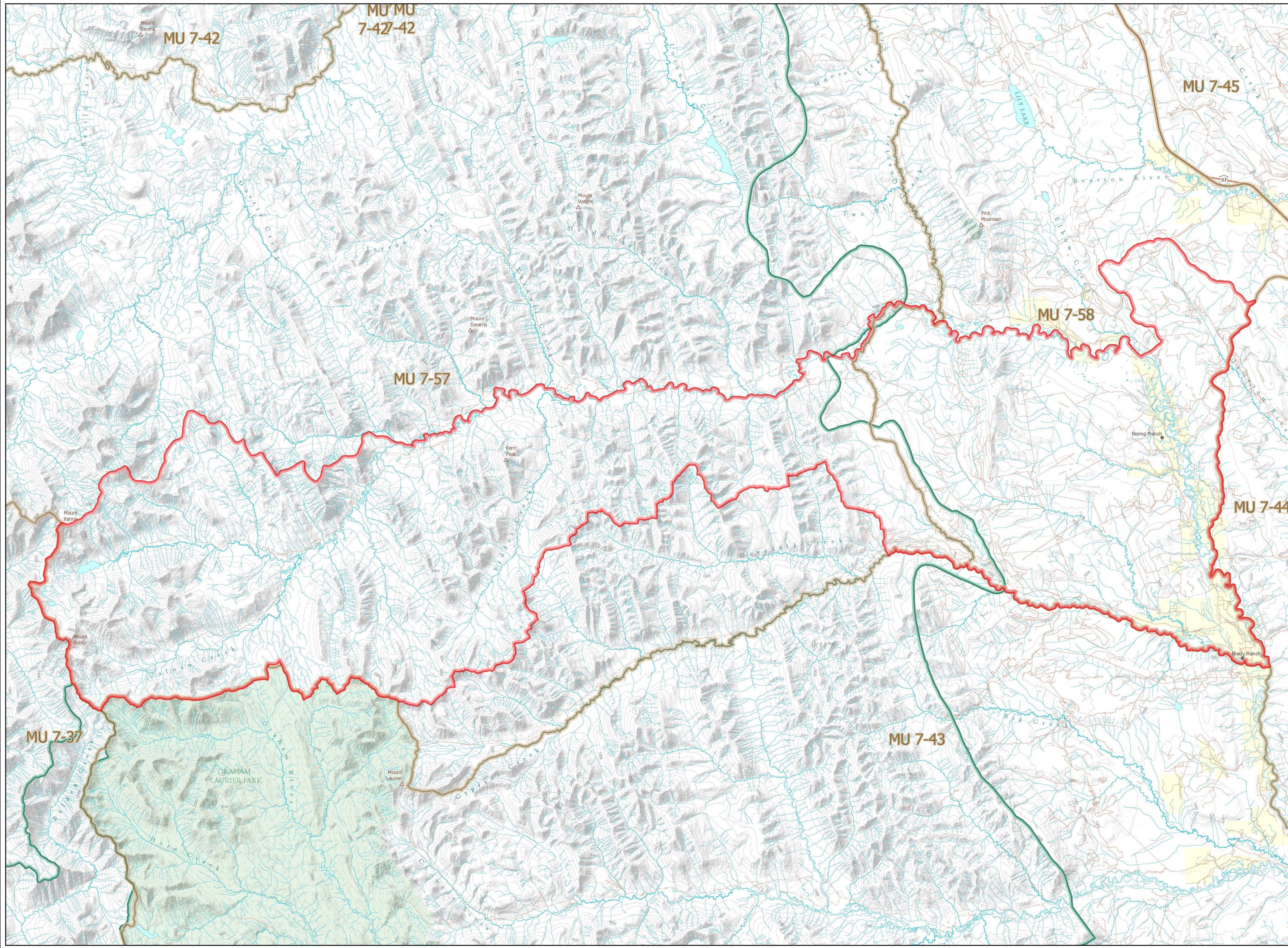


WILDLIFE ACT  
GENERAL OPEN SEASON

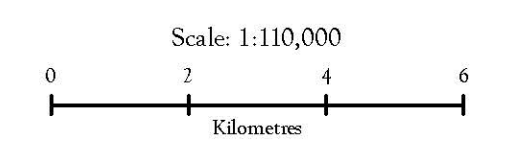
2020 Bison GOS  
Zone F of 7-57, 7-58

- General Open Season
- Wildlife Management Unit
- Muskwa-Kechika Management Area
- Private Land \*
- Provincial Park / Protected Area / Ecological Reserve



These maps represent LEH zone boundaries only. For other boundary information including, but not limited to, species closed areas, management unit boundaries, no hunting/shooting areas and motor vehicle restricted areas, refer to the appropriate regulations.

These maps are a georeferenced PDF so that it can be imported into mobile hardware such as a smartphone or tablet for viewing in third party applications.



Intended plot size for this map is 34x22 inches

Produced for: Wildlife and Habitat Branch  
Produced by: OecBC on 2020/01/08

