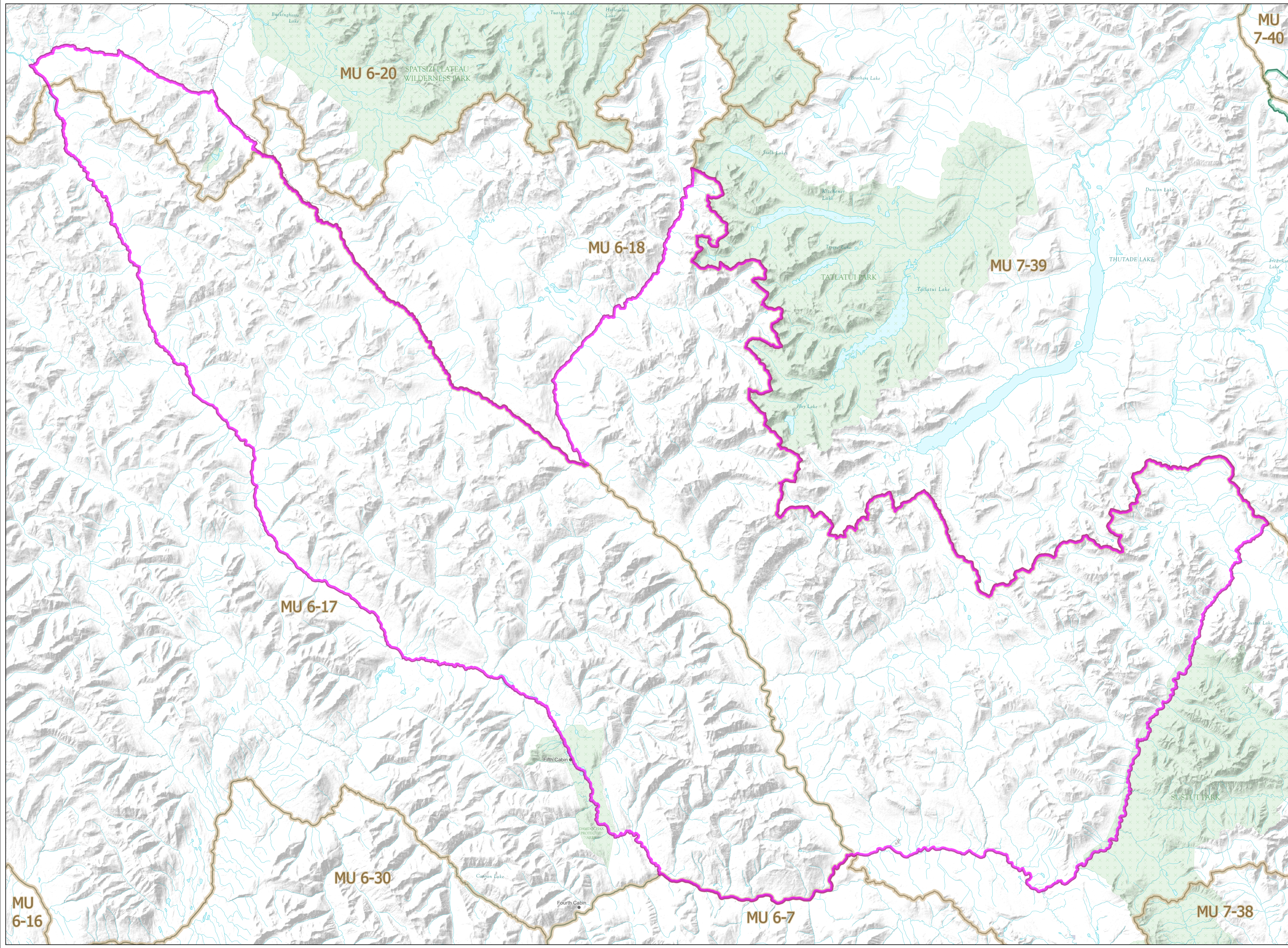
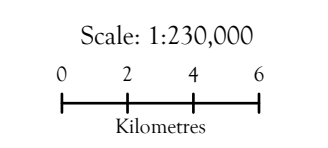


WILDLIFE ACT
 LIMITED ENTRY HUNTING
 2024
 CARIBOU
 Zone A of 6-17, 6-18, 6-20



- ▬ Limited Entry Hunting Area
- Wildlife Management Unit
- Muskwa-Kechika Management Area
- Indian Reserve
- Provincial Park / Protected Area / Ecological Reserve
- Private Land *

This map is a georeferenced PDF that can be imported into mobile hardware such as a smartphone or tablet for viewing in third party applications.
 *Land ownership is a visual representation of land parcels in ParcelMap BC. Contact the Land Title and Survey Authority for current information on land ownership.



Intended plot size for this map is 34x22 inches

Produced for: Wildlife and Habitat Branch
 Produced by: GeoBC on 2024-01-30

