



Dear LEH Hunter:

This letter is for hunters who received a Limited Entry Hunting (LEH) authorization for a LEH Antlerless Mule Deer hunt in Management Units 5-04 or 5-05.

In 2014, the Supreme Court of Canada (SCC) declared T̓silhqot̓'in Aboriginal title lands in the Chilcotin region that include portions of MUs 5-04 and 5-05. The map in Appendix A shows the area to which the T̓silhqot̓'in Nation has established title.

The T̓silhqot̓'in Nation has enacted a wildlife law, *Nulh Ghah Dechen Ts'edilhtan*, which among other measures prohibits hunting on T̓silhqot̓'in Title Lands without a T̓silhqot̓'in issued permit. *T̓silhqot̓'in* title lands are not publicly available for hunting and the Province advises that you not enter them without T̓silhqot̓'in consent.

The Province continues to work with the T̓silhqot̓'in Nation on the implementation of T̓silhqot̓'in Aboriginal title and the management of hunting within and adjacent to T̓silhqot̓'in title lands. Through this collaboration, the Province and the T̓silhqot̓'in Nation seek long-term solutions that will further bring clarity to resident hunting and hunters in this area.

There is a substantial portion of your LEH hunt zone that is outside the declared title area (see map below in Appendix A) and is still accessible for you to exercise your enclosed LEH authorization to hunt Antlerless Mule Deer.

Please contact the Fish and Wildlife Branch at 250-387-9771 or fishandwildlife@gov.bc.ca if you have any questions about your LEH authorization.

Contact the Xeni Gwet̓'in First Nation Government at 1-866-394-7023 for guidance on how you may use and access T̓silhqot̓'in title lands or more information about the *Nulh Ghah Dechen Ts'edilhtan*.

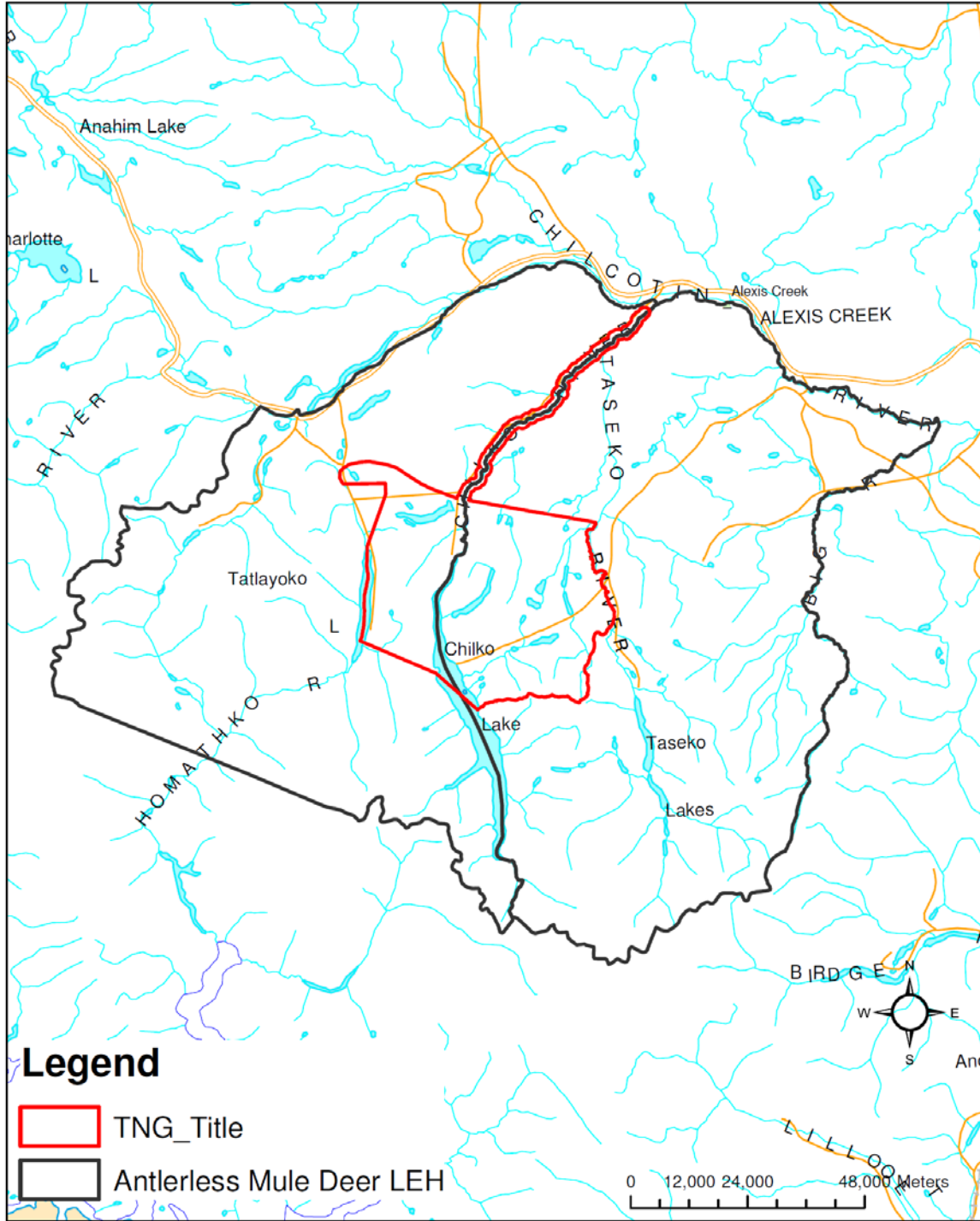
Thank you for your cooperation and continued support as we work with the T̓silhqot̓'in Nation to fully understand the scope and implications of this decision.

Sincerely,

Fish and Wildlife Branch

Appendix A

Antlerless Mule Deer LEH Within MUs 5-04_5-05



*Note: The TNG Title boundary depicted in this map is approximate and may differ slightly from the Title area granted by the SCC.