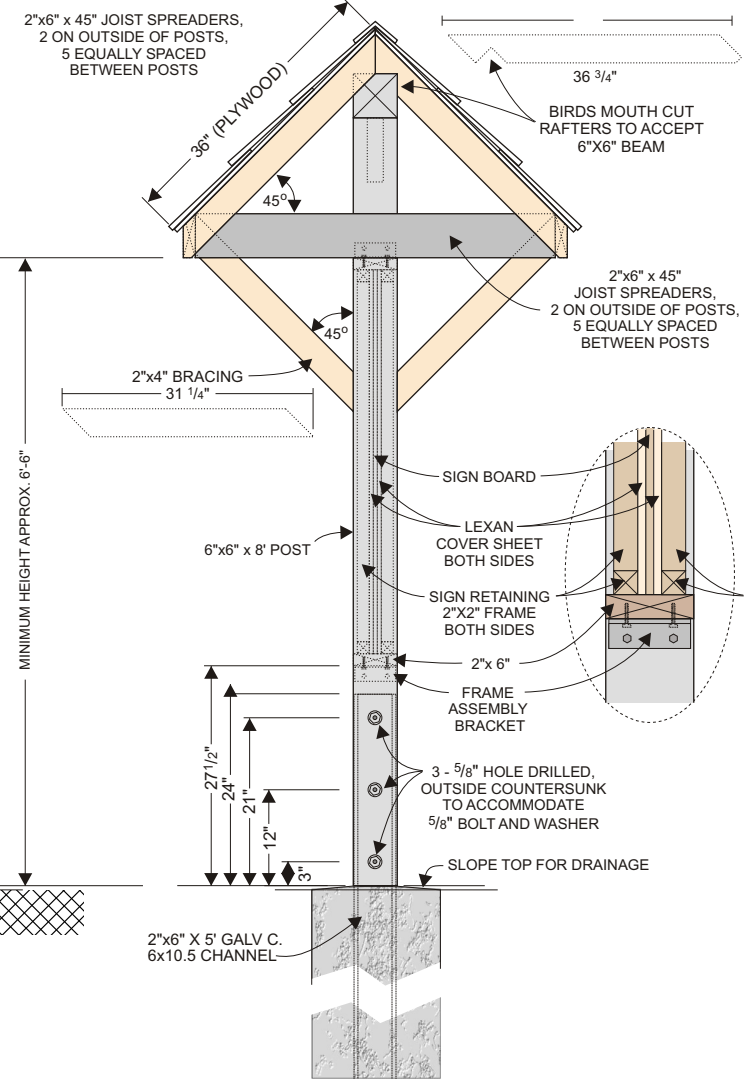
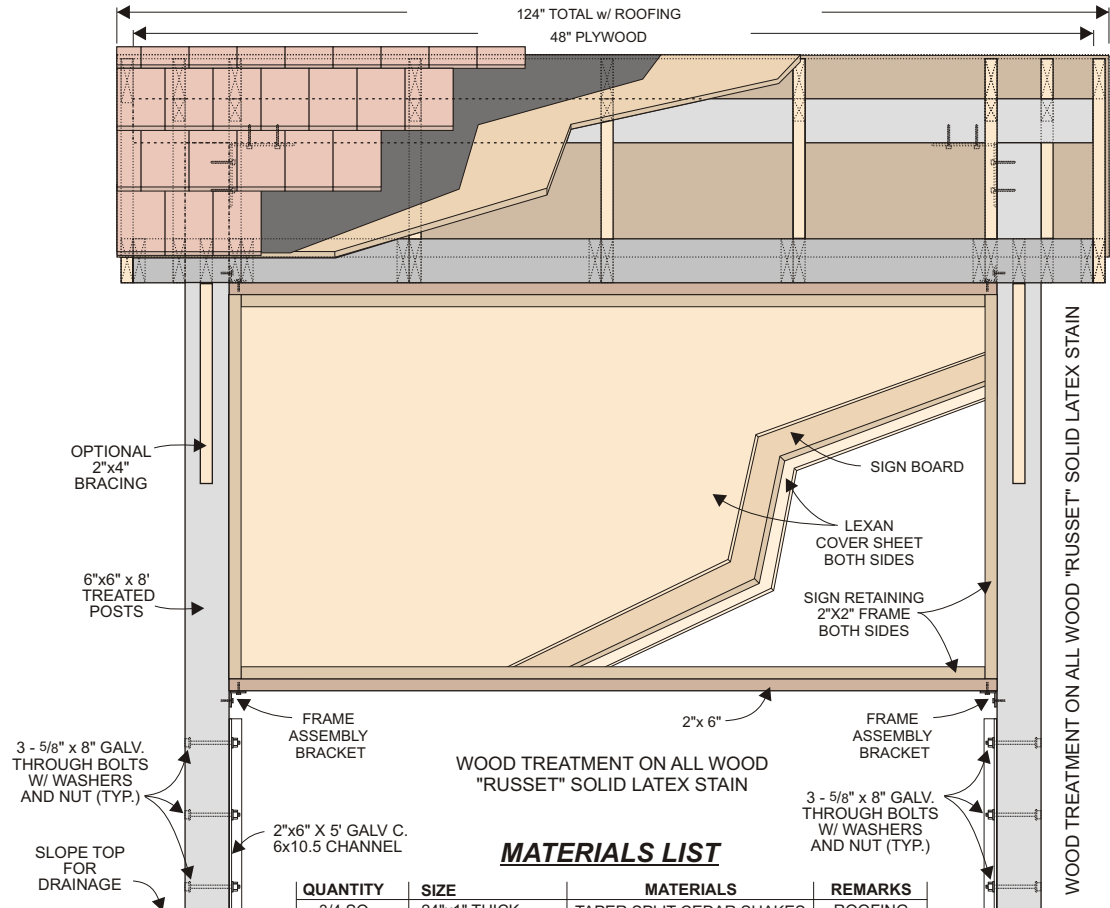



SIGN KIOSK - LARGE 8x4 Shake Roof



MATERIALS LIST

QUANTITY	SIZE	MATERIALS	REMARKS
3/4 SQ.	24"x1" THICK	TAPER SPLIT CEDAR SHAKES	ROOFING
2 SHEETS	10'-4" x 3' x 1/2"	SPRUCE PLYWOOD	ROOF
1 ROLL	18 lb.	BUILDING PAPER	ROOF
1 pcs.	6"x6" x 10'-0"	CONST. S.P.F. (RAFTER BEAM)	RAFTERS AND FASCIA
18 pcs.	2"x4" x 36 3/4"	CONST. S.P.F. (RAFTERS)	
7 pcs.	2"x6" x 45"	CONST. S.P.F. (JOIST SPREAD)	
2 pcs.	2"x6" x 10'-0"	CONST. S.P.F. (FASCIA)	POSTS
4 pcs.	2"x4" x 31 1/4"	CONST. S.P.F. (BRACING)	
2 pcs.	6"x6" x 8'-0"	TREATED POSTS S.P.F.	
2 pcs.	2"x6" x 5'-0"	GALV. C 6x10.5 CHANNEL	SIGN
4 pcs.	2"x2" x 4'-0"	CONST. S.P.F. (FRAME)	
4 pcs.	2"x2" x 7'-9"	CONST. S.P.F. (FRAME)	
2 pcs.	2"x6" x 8'-0"	CONST. S.P.F.	SIGN BOARD
1 pcs.	4'x8' x 1/2"	SIGN BOARD	
2 pcs.	4'x8' x 1/4"	LEXAN COVER	
6 pcs.	5/8" x 8"	GALV. BOLT W/ WASHER AND NUT	HARDWARE
18 pcs.	3/8" x 3"	LAG SCREWS	
4 pcs.	2"x6"	ANGLE BRACKET	
2 pcs.	2"x8" x 8"	ANGLE BRACKET	
1 BOX	#10 x 3 1/2"	WOOD SCREWS	
1 BOX	#12 x 1 1/2"	PAN HEAD SCREWS	
1 BOX	#12 x 2 1/2"	PAN HEAD SCREWS	

Standard SIGN KIOSK - LARGE 8x4 Shake Roof	
File No:	Draft Date: 03/06
Approved By: <i>W. Marshall</i>	Revision No: Date: 01/08
Date:	Revision No: Date:
 Ministry of Tourism, Sport and the Arts	
Drawing Scale: 1" = 24" Sheet Size: 8.5" X 11"	
Drawing No: RST 481-SK-2sr	