

Returning to Burning: Reconstructing Cheslatta Fire Histories

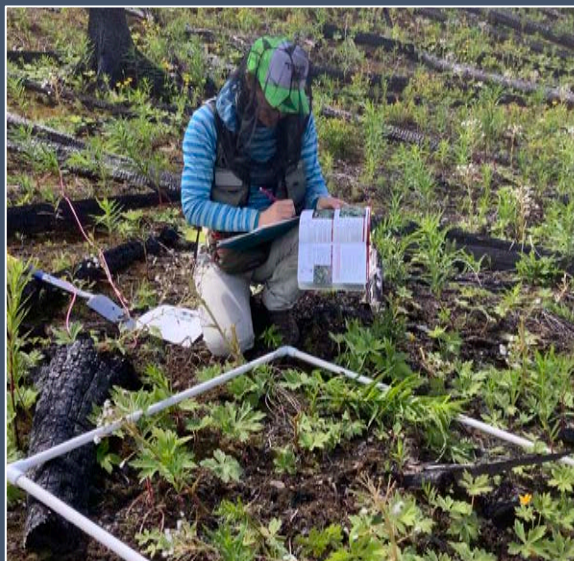


@kiramhoffman

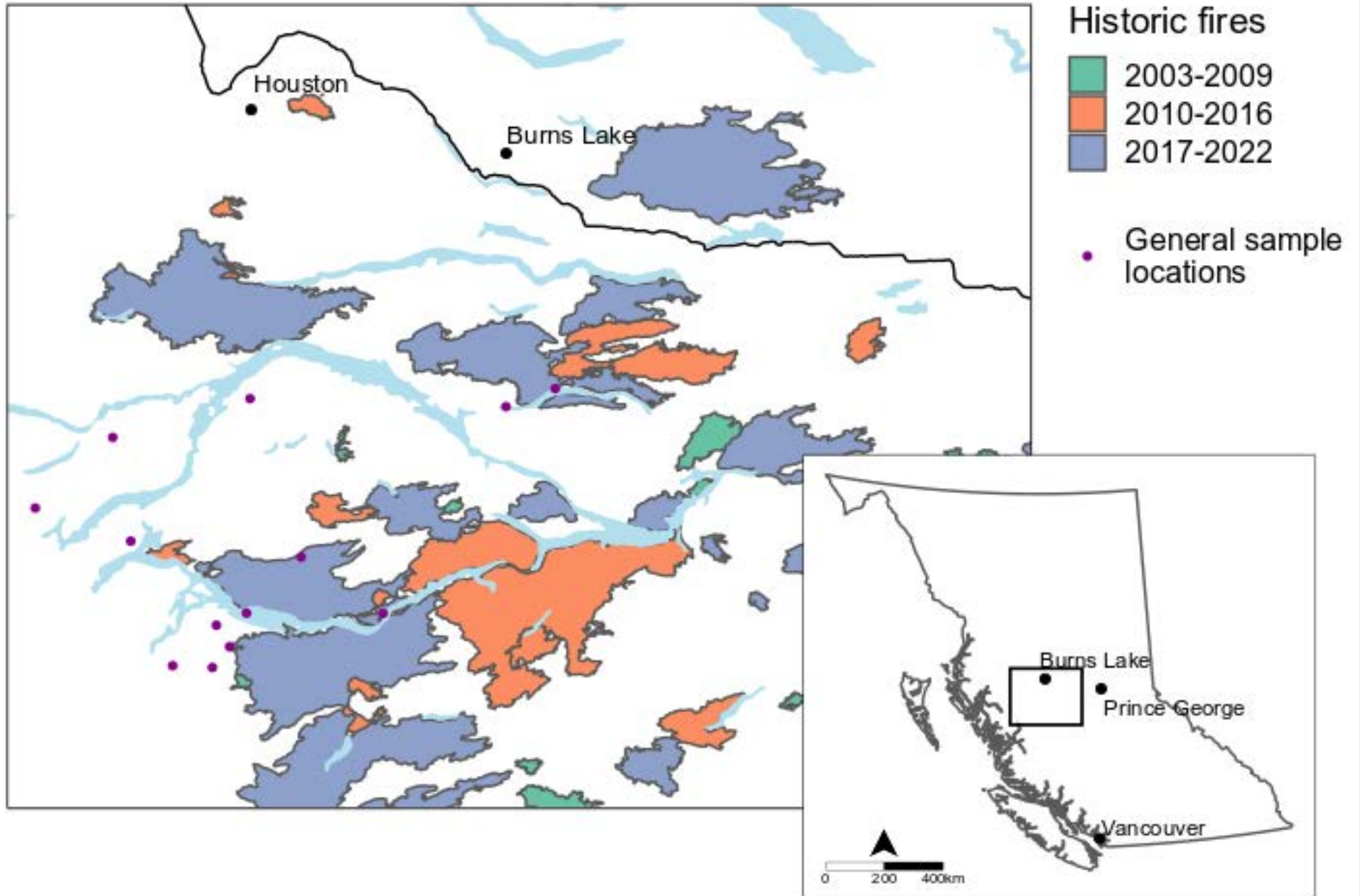


kira.hoffman@ubc.ca

Positionality



Fire History Sampling



15 Sampling sites
500 cookies
300 tree cores
60 soil samples



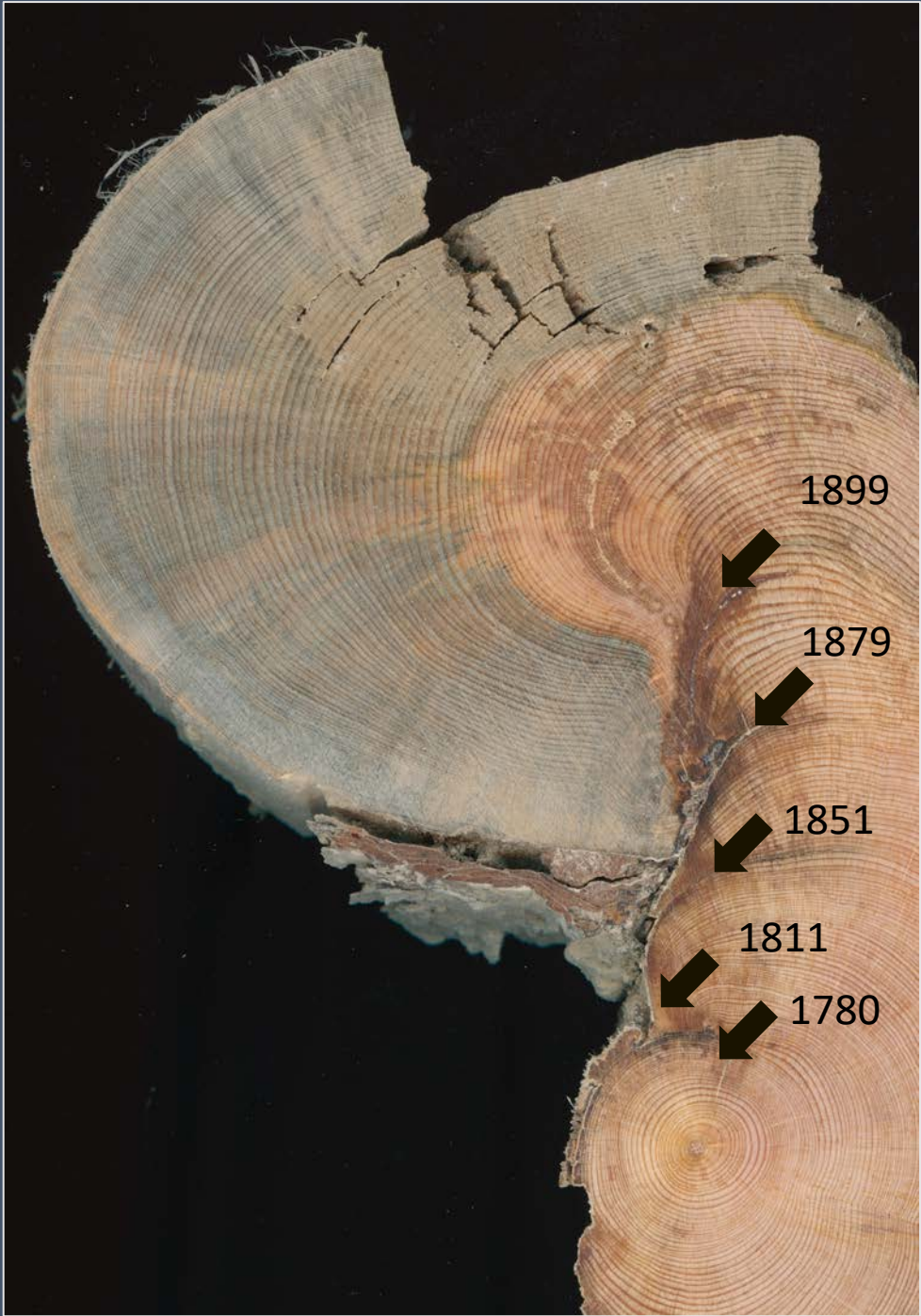
What doesn't kill me, ~~makes me stronger~~ eventually kills me.

- Whitebark pine is vulnerable to compounding disturbances
- It needs fire, but the right kind
- It needs help with dispersal (hello nutcrackers)
- It doesn't do well with lots of competition



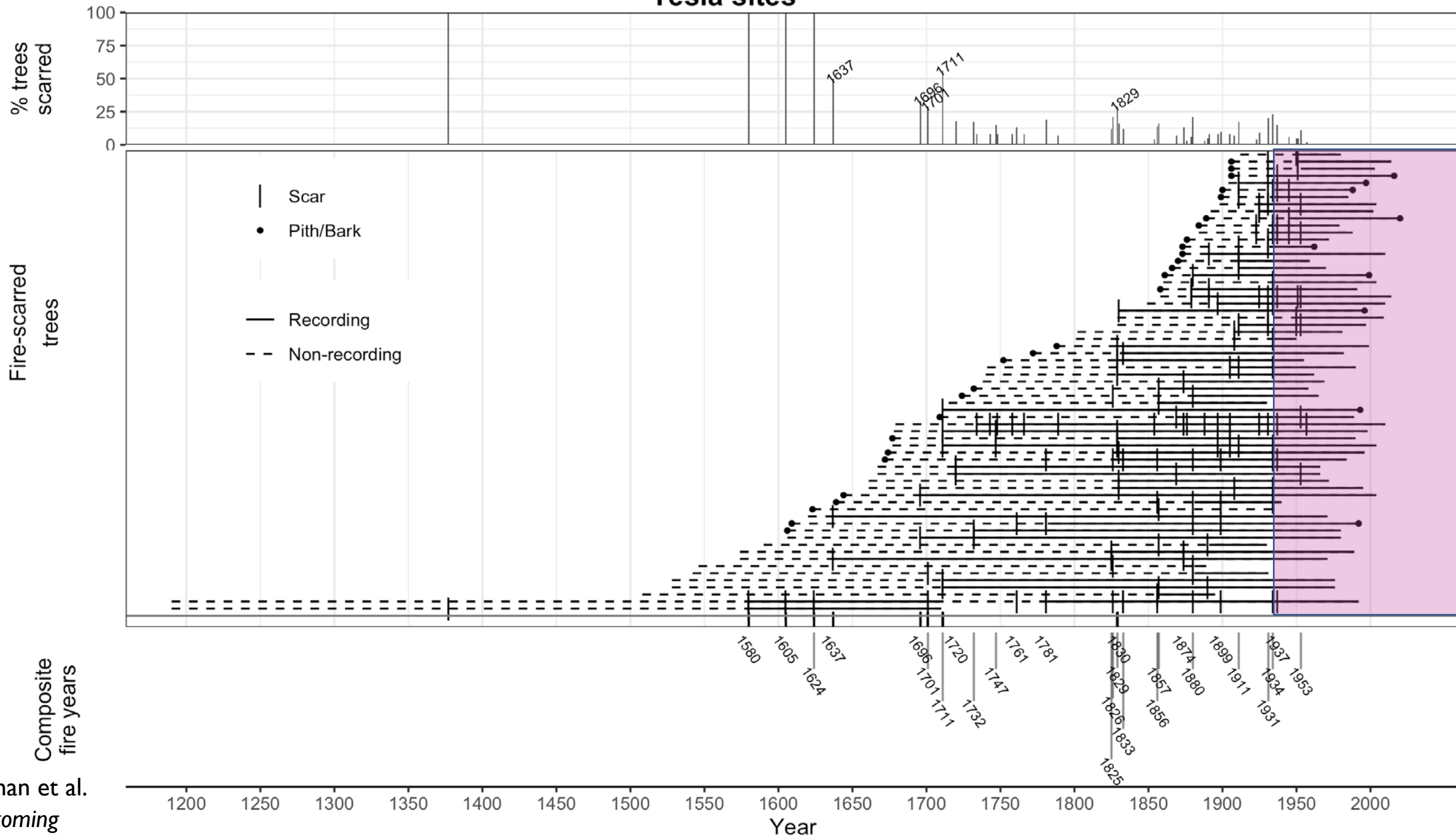


Reconstructing Fire Histories



Images: K. Hoffman

Tesla sites





Images: K. Hoffman

Landscape and Cultural Change



Lodgepole pine trees killed in 1952 with the creation of the Nechako reservoir.

Preparing for the Future of Fire

- We need to support Indigenous-led fire management and collaborative partnerships
- We need to rethink fire suppression and what makes landscapes fire resilient
- We need proactive management across the broader land base, *especially* in protected areas





Fire samples from Cheslatta Lake tell a story of repeat low-severity fire .