

Yukon Territory

Northwest Territories

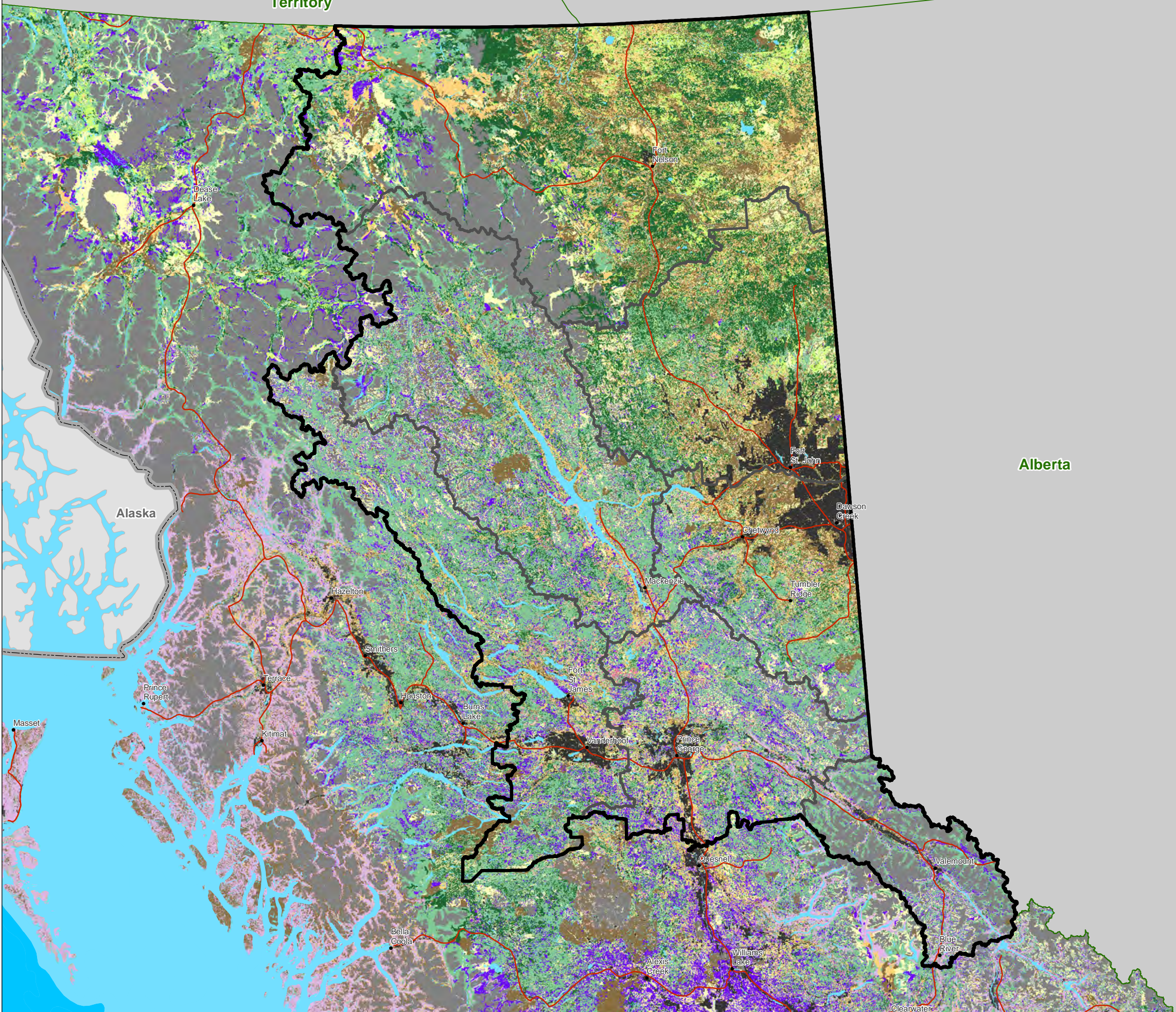
# Prince George Fire Centre Fuel Types

## Legend

- Populated Place
- Highway
- ▭ Fire Centre Boundary
- ▭ Fire Zone Boundary
- No Data (Private Land)
- No Data (Private Managed Forest Land)

## 2018 BC Fuels

- C-1 Spruce Lichen Woodland
- C-2 Boreal Spruce
- C-3 Mature Jack or Lodgepole Pine
- C-4 Immature Jack, Lodgepole Pine, densely stocked Ponderosa Pine, or Douglas Fir
- C-5 Red and White Pine
- C-7 Ponderosa Pine or Douglas Fir
- D-1/2 Green or Leafless Aspen or Deciduous
- S-1 Jack or Lodgepole Pine slash
- S-2 White Spruce, Balsam slash
- S-3 Coastal Cedar, Hemlock, Douglas Fir slash
- O-1a/b Matted or Standing Grass
- NF-NonFuel
- NF-Water
- M 1/2 Boreal Mixedwood

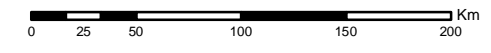


Alberta

Alaska



1:3,600,000



Ministry of  
Forests, Lands, Natural  
Resource Operations  
and Rural Development

BC Wildfire Service

**Disclaimer:**  
The information this map contains is provided "as is" without warranty of any kind, whether express or implied. All implied warranties, including, without limitation, implied warranties of merchantability, fitness for a particular purpose, and non-infringement, are hereby expressly disclaimed.

Filename: Fuels\_Overview\_Map\_FireCentre\_11x17L  
Projection: NAD 1983 BC Environment Albers  
Datum: North American 1983  
Date/Time Created/Revised: Jun 25, 2019 1508  
Created by: dbrizan