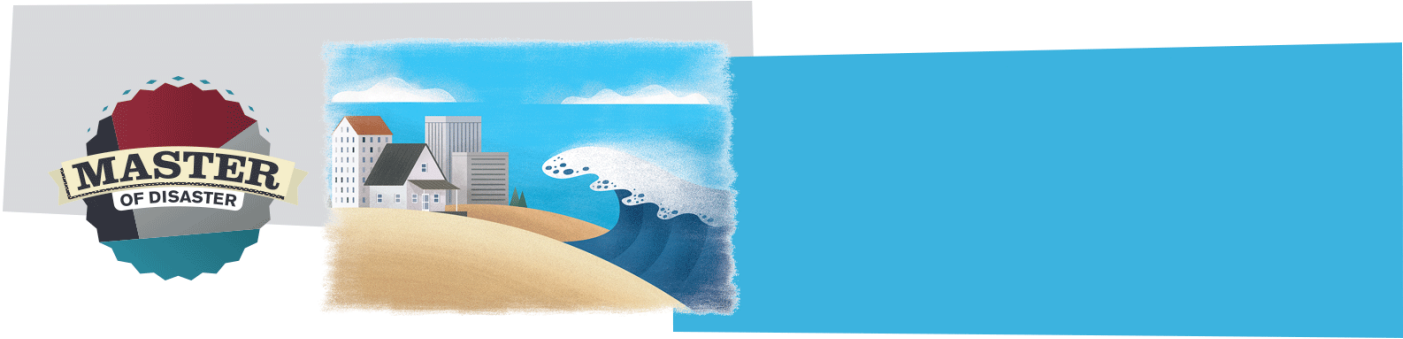




Tsunami

Tsunami is Japanese for “Harbour Wave.” Tsunamis are made up of a series of waves, not just one big one, caused by a displacement of water beneath the ocean floor. Usually this is due to an earthquake but can also be caused by an underwater landslide that is not earthquake related. The time between wave crests can range between minutes to hours, and in height from a few centimetres to several metres. In the deep ocean, waves can travel about 800 kilometres per hour – that’s 10 times faster than cars drive on the highway and more than 20 times faster than a BC ferry!



Tsunami | Worksheet

Answer the following questions using what your teacher has taught you about this hazard and what you've learned through your own independent research.

1. Give a description of how this hazard happens and why:

2. Are there any warning signs that this hazard is on its way or may occur where you live?

3. What are some trusted organizations that you could go to for information about this hazard?

4. Name a time and place where this hazard has occurred in the past and one thing we can learn from that event:

Place: _____ Time/Year: _____

What can we learn:



5. What can you do to prepare for this hazard before it happens?

6. Write a description of a plan you might discuss with your family to prepare for this hazard:

7. What did you learn about this hazard that you did not know before this lesson?

8. What do you still wonder about this hazard?
