

This report summarizes avalanche deaths in B.C. reported between January 1, 1996 and March 17, 2014.

Cases were grouped by avalanche season, with each season defined as beginning in November and ending in April of the following year. The BCCS operates in a live database environment. The data are considered preliminary until all investigations have been completed. Data are subject to change, and are not directly comparable to published counts from previous years.

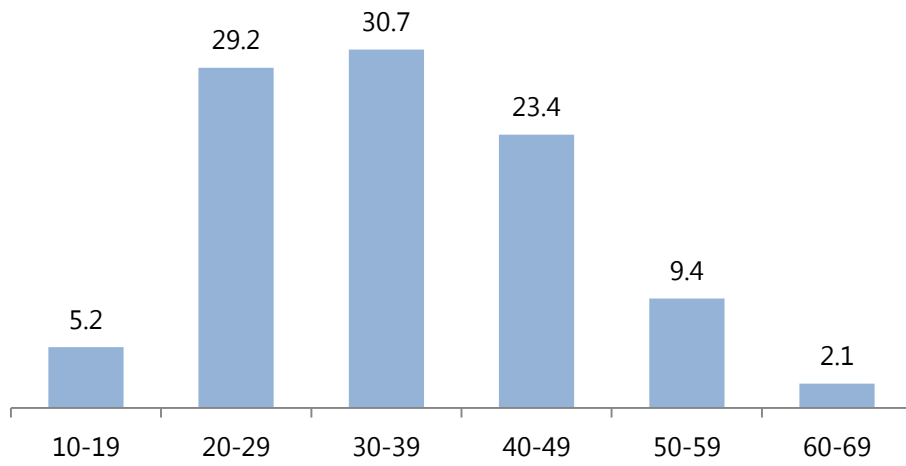
## Summary

- Between January 1, 1996 and March 17, 2014, there were 192 avalanche-related deaths in B.C., an average of 10 deaths each year
- The average age was 35.9 years
- 90.6% of decedents were male and 9.4% were female
- The majority of avalanche-related deaths occurred in the Interior (68.8%) and Northern (21.4%) regions
- Snowmobiling was the most common activity (41.1%), followed by skiing (33.9%), heli-skiing (13.5%), snowboarding (5.2%), hiking/climbing (4.2%), and occupational activities (2.1%)
- The majority of decedents were permanent residents of B.C. (39.6%), Alberta (30.7%), or Washington (4.7%). By specific activity:
  - The majority of snowmobilers resided in either Alberta (50.6%) or B.C. (45.6%)
  - 88.5% of heli-skiers resided outside of Canada
  - The majority of skiers resided in B.C. (44.6%), Alberta (23.1%), or Washington (9.2%)

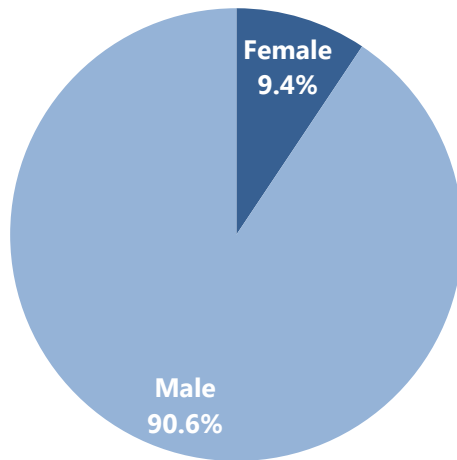
<b>Avalanche Deaths by Season</b>	
<b>Season</b>	<b>Total</b>
1995-1996	5
1996-1997	14
1997-1998	13
1998-1999	7
1999-2000	4
2000-2001	12
2001-2002	9
2002-2003	25
2003-2004	6
2004-2005	8
2005-2006	7
2006-2007	5
2007-2008	11
2008-2009	24
2009-2010	11
2010-2011	9
2011-2012	10
2012-2013	5
2013-2014	7
<b>Total</b>	<b>192</b>
<b>Average</b>	<b>10.1</b>

*Note: The 1995-1996 avalanche season only includes cases from January 1, 1996 onwards. Three deaths occurred in July (one in 1997 and two in 2005). These cases were included in the previous avalanche season. One death occurred in October, 2012. This case was included in the following avalanche season.*

### Avalanche Deaths by Age Group (%)



### Avalanche Deaths by Gender (%)



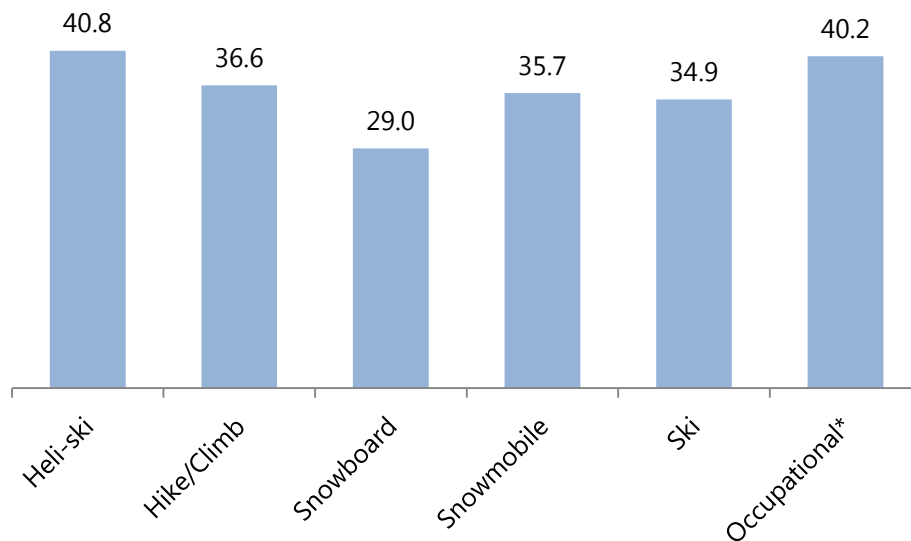
<b>Avalanche Deaths by Region</b>						
<b>Season</b>	<b>Fraser</b>	<b>Interior</b>	<b>Island</b>	<b>Metro</b>	<b>Northern</b>	<b>Total</b>
1995-1996	-	2	3	-	-	5
1996-1997	-	8	-	3	3	14
1997-1998	-	11	-	-	2	13
1998-1999	-	3	-	2	2	7
1999-2000	-	2	-	2	-	4
2000-2001	-	7	-	-	5	12
2001-2002	-	7	-	1	1	9
2002-2003	-	22	-	-	3	25
2003-2004	-	5	-	1	-	6
2004-2005	-	5	-	-	3	8
2005-2006	-	6	-	-	1	7
2006-2007	-	2	-	-	3	5
2007-2008	-	9	-	1	1	11
2008-2009	-	15	-	2	7	24
2009-2010	-	8	-	1	2	11
2010-2011	1	4	-	-	4	9
2011-2012	-	7	-	2	1	10
2012-2013	-	4	-	-	1	5
2013-2014	-	5	-	-	2	7
<b>Total</b>	<b>1</b>	<b>132</b>	<b>3</b>	<b>15</b>	<b>41</b>	<b>192</b>

### Avalanche Deaths by Activity

Season	Heli-ski	Hike/Climb	Snowboard	Snowmobile	Ski	Occupational*	Total
1995-1996	-	-	1	-	4	-	5
1996-1997	9	1	1	2	1	-	14
1997-1998	-	-	-	5	8	-	13
1998-1999	-	2	1	-	2	2	7
1999-2000	1	-	1	1	1	-	4
2000-2001	1	-	-	7	4	-	12
2001-2002	3	-	-	2	4	-	9
2002-2003	1	-	-	7	17	-	25
2003-2004	-	-	1	2	3	-	6
2004-2005	2	2	1	3	-	-	8
2005-2006	-	1	2	1	2	1	7
2006-2007	3	-	-	2	-	-	5
2007-2008	-	-	-	7	4	-	11
2008-2009	1	-	1	19	3	-	24
2009-2010	2	-	-	6	3	-	11
2010-2011	-	2	-	6	1	-	9
2011-2012	3	-	-	3	4	-	10
2012-2013	-	-	-	1	3	1	5
2013-2014	-	-	1	5	1	-	7
<b>Total</b>	<b>26</b>	<b>8</b>	<b>10</b>	<b>79</b>	<b>65</b>	<b>4</b>	<b>192</b>

\* "Occupational" decedents include two avalanche technicians, a cat ski employee, and a mining surveyor

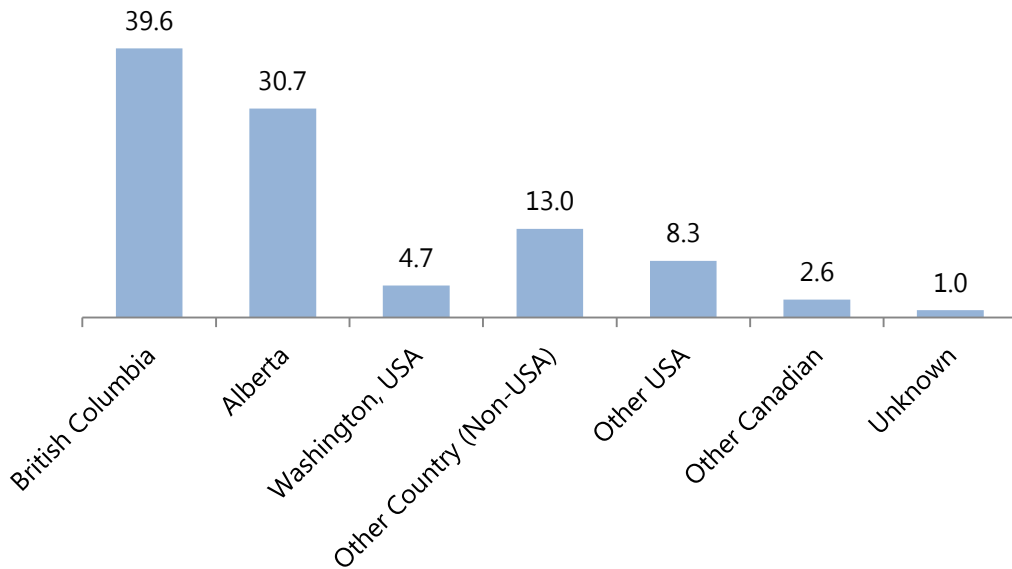
**Avalanche Deaths by Activity and Average Age**



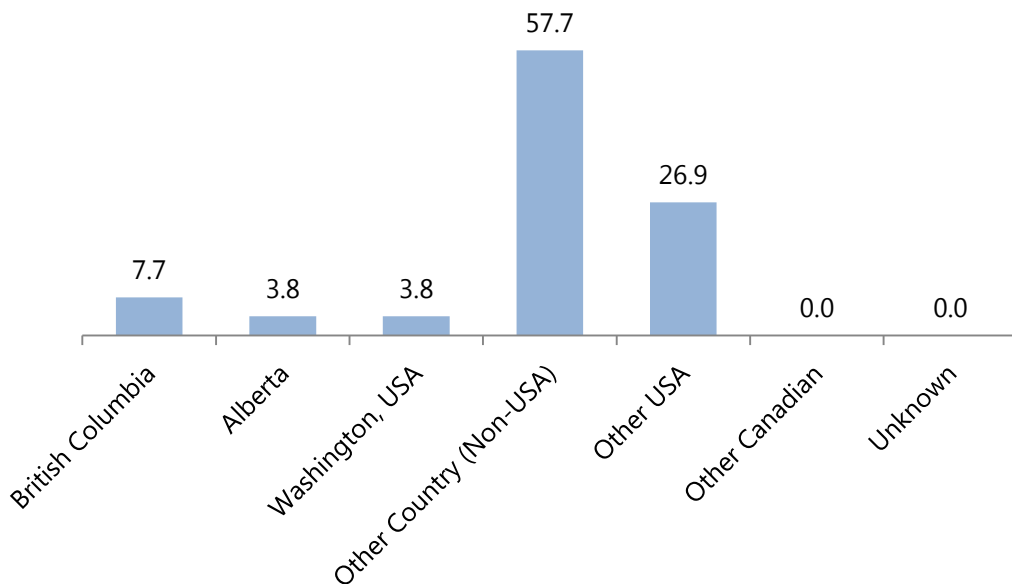
### Avalanche Deaths by Activity and Decedent Permanent Residence

Residence	Heli-ski	Hike/Climb	Snowboard	Snowmobile	Ski	Occupational	Total
British Columbia	2	1	4	36	29	4	76
Alberta	1	1	2	40	15	-	59
Washington, USA	1	-	-	2	6	-	9
Other Country (Non-USA)	15	2	1	-	7	-	25
Other USA	7	1	1	-	7	-	16
Other Canadian	-	3	1	1	-	-	5
Unknown	-	-	1	-	1	-	2
<b>Total</b>	<b>26</b>	<b>8</b>	<b>10</b>	<b>79</b>	<b>65</b>	<b>4</b>	<b>192</b>

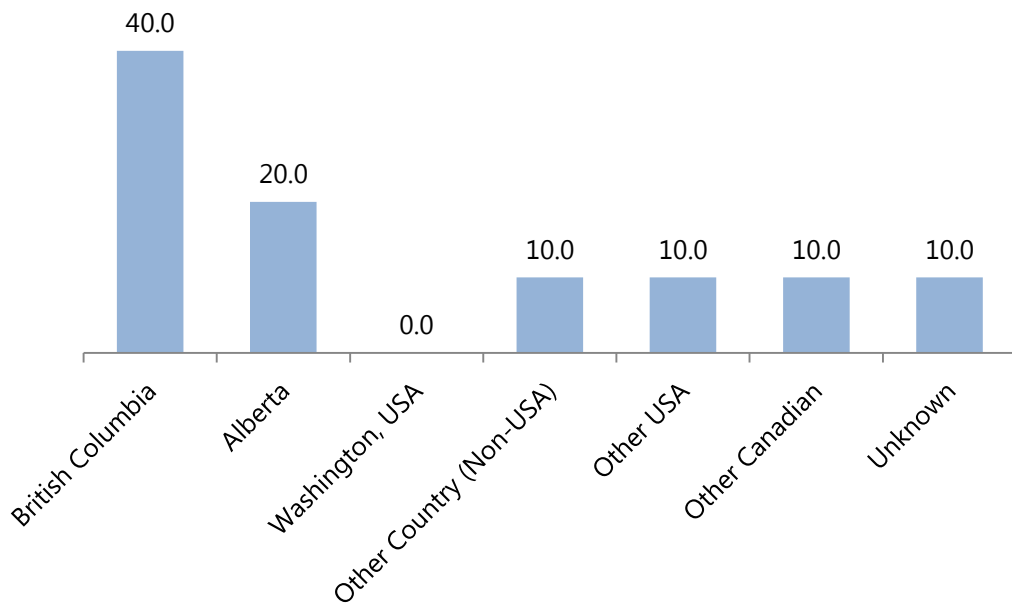
**Avalanche Deaths by Decedent Permanent Residence (%)**



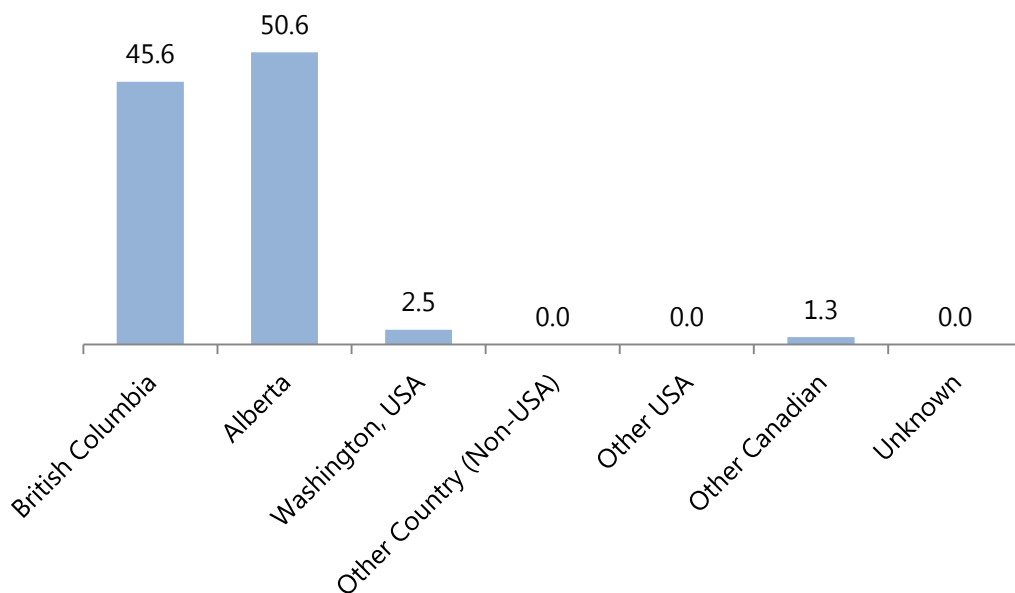
### Heli-ski Avalanche Deaths by Decedent Permanent Residence (%)



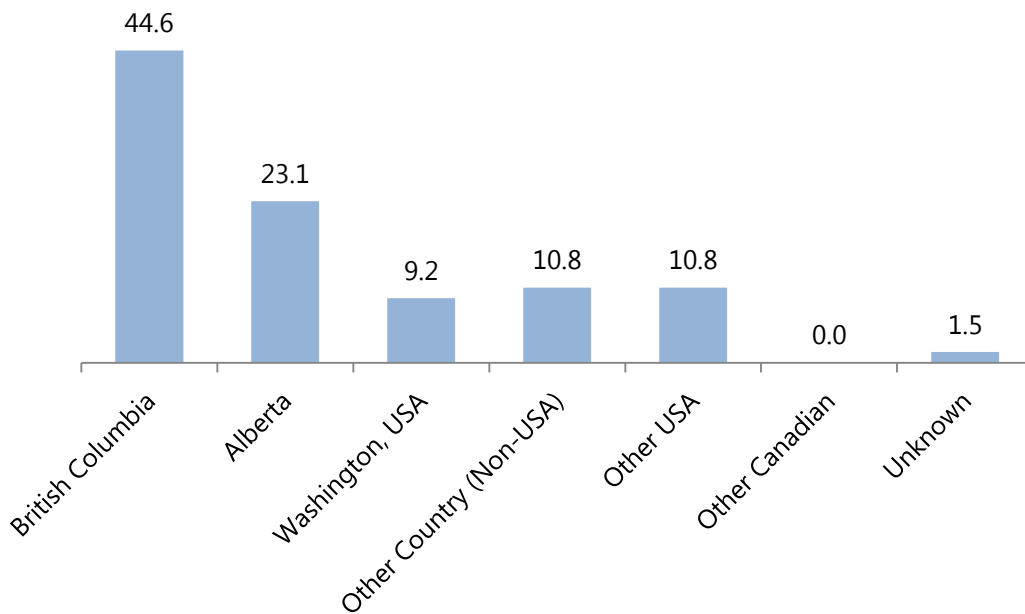
### Snowboard Avalanche Deaths by Decedent Permanent Residence (%)



### Snowmobile Avalanche Deaths by Decedent Permanent Residence (%)



### Ski Avalanche Deaths by Decedent Permanent Residence (%)





## Number of Deaths per Avalanche

	Avalanche #															Total
	1	2	3	4	5	6	7	8	9	10	11	12	13	14	15	
1995-1996	1	1	3													5
1996-1997	1	3	2	1	1	2	1	2	1							14
1997-1998	1	6	1	2	1	1	1									13
1998-1999	1	1	1	2	1	1										7
1999-2000	1	1	1	1												4
2000-2001	2	1	2	1	1	1	1	1	1	1						12
2001-2002	1	1	3	1	2	1										9
2002-2003	1	1	7	7	2	3	1	1	1	1						25
2003-2004	1	1	1	1	1	1										6
2004-2005	1	1	1	1	1	1	2									8
2005-2006	1	1	2	1	1	1										7
2006-2007	1	2	2													5
2007-2008	2	1	1	1	1	1	1	1	1	1						11
2008-2009	8	1	1	1	1	1	1	1	2	1	1	2	1	1	1	24
2009-2010	1	1	1	1	2	1	2	1	1							11
2010-2011	1	1	1	1	3	2										9
2011-2012	1	1	1	1	1	1	1	1	2							10
2012-2013	1	1	1	1	1											5
2013-2014	1	1	1	1	1	1	1									7