



Ministry of
Health

British Columbia
Professional and Software Conformance Standards
Electronic Health Information Exchange
PharmaNet Implementation Guide – Domain Edition
Version 1.7 2022-05-20

Security Classification: Low Sensitivity

Copyright Notice

Copyright © Province of British Columbia

All rights reserved.

This material is owned by the Government of British Columbia and protected by copyright law. It may not be reproduced or redistributed without the prior written permission of the Province of British Columbia.

Disclaimer and Limitation of Liabilities

This document and all of the information it contains is provided "as is" without warranty of any kind, whether express or implied.

All implied warranties, including, without limitation, implied warranties of merchantability, fitness for a particular purpose, and non-infringement, are hereby expressly disclaimed.

Under no circumstances will the Government of British Columbia be liable to any person or business entity for any direct, indirect, special, incidental, consequential, or other damages based on any use of this document, including, without limitation, any lost profits, business interruption, or loss of programs or information, even if the Government of British Columbia has been specifically advised of the possibility of such damages.

Document Details

Author:	Ministry Conformance Services Team
Date Created:	2014-12-24
Last Updated:	2022-05-20
Version:	1.7

Document Control

Date	Author	Version	Notes
December 2014	CIS-BG	0.1	Initial version.
March 2015	CIS-SN	0.2	Remediated version.
June 2015	CIS-Team	1.0	R70.2 release.
March 2016	CIS-Team	1.1	Added sequence diagrams.
May 2016	CIS-Team	1.2	Updated syntax rules.
January 2017	CIS-Team	1.3	Updated: <ul style="list-style-type: none">• Section 6.5 (Interpreting Transaction Responses)• Section 6.18 (Error Response Message)
October 2018	CIS-Team	1.4	Updated: <ul style="list-style-type: none">• “Drug Monograph Information TDR (00, 50)” for more than one monograph results.• “Patient Keyword Maintenance TCP (00, 50)” for merged PHN.
March 2021	CIS-Team	1.5	Updated using EXD document requirements.
September 2021	CIS-Team	1.6	<ul style="list-style-type: none">• Minor edits (e.g., formatting);• Added error notifications for TRX-X7 response; and• Removed “6.10 Reference API and Encryption Tool”.
May 2022	CIS-Team	1.7	<ul style="list-style-type: none">• Added 6.19 Optional Fields Submitted.

Table of Contents

1.0 Introduction	7
1.1 Purpose of Document.....	7
1.2 Intended Audience	7
1.3 Overview	7
2.0 How to Read the PharmaNet Specification	8
2.1 Organization of the Technical Package	8
2.2 PharmaNet Message Labels.....	9
3.0 Source Standards	10
3.1 PharmaNet Segments	10
4.0 Health Level 7 (HL7) Standards in PharmaNet Messages.....	11
4.1 Syntax Rules	11
4.2 Syntax Conventions	13
4.3 Data Segments	14
4.4 Data Sub-Segments	15
4.5 Message Syntax.....	16
4.6 Data Elements	16
4.7 Field Level Conformance	17
5.0 CPhA Standards	20
6.0 Notes to Implementers	21
6.1 “Location ID” as POS Identifier	21
6.2 PharmaNet Versioning.....	21
6.3 Publication Identifier	21
6.4 Participant Messages (Fan-Out).....	22
6.5 Interpreting Transaction Responses	23
6.6 Combination Transactions	26
6.7 Data Padding Deprecated	27

6.8	Trace Numbers	28
6.9	Retransmission of TAC/TDU Combination Transactions	28
6.10	Batch Processing.....	29
6.11	Unique Dispense Numbers	29
6.12	PharmaNet Version 70 Release Changes	30
6.13	PharmaNet Transaction Codes	31
6.14	No Fixed Segment Order.....	32
6.15	Messaging Workbench (MWB) Tool	32
6.16	Patient Protective Word	33
6.17	Segment Encryption	33
6.18	Error Response Message	33
6.19	Optional Fields Submitted	34
7.0	PharmaNet Transactions.....	35
7.1	Acknowledgement Response.....	37
7.2	NEXT (00/00) – Continuation Message	39
7.3	TAC/TDU (01/04/51/54) – Adjudicate Pharmacare Claim	45
7.4	TAC/TDU (11/61) – Adjudicate Pharmacare Claim Reversal.....	51
7.5	TCP (00/50) – Patient Keyword Maintenance	56
7.6	TDR (00/50) – Drug Monograph Information.....	59
7.7	TDT (30/80) – Adjudication Reconciliation (Daily Totals Inquiry)	64
7.8	TDT (31/81) – Adjudication Reconciliation (Claim Details)	68
7.9	TDT (32/82) – Adjudication Reconciliation (Same Day Reversals)	72
7.10	TDT (33/83) – Adjudication Reconciliation (Prior Day Reversals)	76
7.11	TDU (00/50) – Drug Utilization Evaluation	80
7.12	TID (00/50) – Patient Identification	85
7.13	TIL (00/50) – Get Location Details.....	88
7.14	TIP (00/50) – Prescriber Identification	90
7.15	TMU (01/51) – Medication Update.....	93

7.16	TMU (11/61) – Medication Update Reversal	97
7.17	TPA (00/50) – Patient Address Update	100
7.18	TPH (00/50) – Request PHN	105
7.19	TPI (00/50) – Patient Medication Profile Information Update	109
7.20	TPM (00/50) – Profile Mailing Request	112
7.21	TPN (00/50) – Patient Name Search	115
7.22	TRP (00/50) – Request Patient Profile.....	121
7.23	TRR (00/50) – Retrieve Patient Profile – Most Recent 15.....	126
7.24	TRS (00/50) – Retrieve Patient Profile – Filled Elsewhere	130
7.25	TRX (X0/X5) – Retrieve Patient Prescription	134
7.26	TRX (X1/X6) – Record Prescription.....	138
7.27	TRX (X2/X7) – Change Prescription Status	142
7.28	TRX (X3/X8) – Adapt Prescription	146
7.29	TRX (X4/X9) – Retrieve Prescriber Prescription.....	156

1.0 Introduction

1.1 Purpose of Document

This document provides guidance on the implementation of PharmaNet messages.

1.2 Intended Audience

The intended audience for this document is technical staff involved in application development and integration of point-of-service (POS) systems connecting with Ministry health information exchange (HIE) systems.

1.3 Overview

This document is the technical implementation guide for PharmaNet messaging and one component of the BC Professional and Software Conformance Standards (the “Conformance Standards”) publication and must be read in conjunction with the other Conformance Standards documentation.

References to PharmaNet codes should be reviewed with the BC PharmaNet Terminology Worksheet (i.e., BC-PNet-v70-Terminology.xlsx).

About PharmaNet

Since 1995, PharmaNet is the province-wide medication management system used in British Columbia. The PharmaNet repository includes all prescriptions dispensed in community pharmacies.

The PharmaNet system supports many message-based services that are based upon the HL7 version 2.x Standard and the Canadian Pharmacist’s Association (CPhA) “Pharmacy Claim Standard”.

This implementation guide is the DOMAIN edition that covers all supported PharmaNet message services. The Ministry may, from time-to-time publish subsets of these same specifications for particular POS settings.

2.0 How to Read the PharmaNet Specification

This technical package is limited to message interaction models and message markup and does not cover the actual use of the message services. For business level information about how to use the PharmaNet messages refer to the conformance standards volumes.

2.1 Organization of the Technical Package

Message interactions are described and include details about PharmaNet behaviour and messaging expectations for sender and receiver.

The tables in [Section 7.0 \(PharmaNet Transactions\)](#) include the logical layout (segment structure) of each message type.

Usage rules and implementer guidelines are normally provided in the field-level notes within the message models. Known conformance issues are identified at the field level, where appropriate.

Datatypes are described in Volume 4: Technical Supplement – PharmaNet Message Specifications.

Messaging topics that are general to most or all message types are in the implementation guide in [Section 6.0 \(Notes to Implementers\)](#).

Terminology for the PharmaNet messages can be found in the following attachment:

- PNET-R70.4-Domain-Messaging.zip

Please refer to “readme files” for specific guidance on the contents of folders within this package.

2.2 PharmaNet Message Labels

PharmaNet messages are labelled (in the publication) as follows:

<message type>-<CPhA transaction code>-<message-name>-[Input, Output]

Example: “TPA-50-Patient-Address-Update-Output”

Where:

- **<message type>** = a three-character code that identifies a type of transaction. This code also appears in the input messages in field ZZZ.2 [Transaction id]. (PharmaNet does not use the HL7 field MSH.9 [Message Type], which instead has a ‘recommended’ value - of “ZPN”.)
- **<message name>** = the business name for the message. Both input and output messages are usually given the same business name. (This differs from HL7 usage where each message type usually has a different name that reflects its function.)
- **<CPhA transaction code>** = a two-character alpha-numeric code. The CPhA transaction code is required for all Input messages and is found in the ZCA.4 [Transaction Code] field. It is not present in many Output (i.e., PharmaNet response) messages.

Note: Many PharmaNet custom transactions are mapped to CPhA code = “00” so this is not an absolute reference.

Some message types support a number of different transactions, as indicated by the transaction code that is set at run time. These messages are catalogued separately in this specification but in the business documentation and some PharmaNet documentation may be represented together, e.g., “TDT (31/32/33) – Input”.

- **[Input, Output]** = text indicating whether the message is from a point-of-service (POS) to PharmaNet (an “input” message) or a response from PharmaNet to a POS (an “output” message).

Message Label corrections in BC.PNET.r70.1:

In previous publications the same CPhA code was sometimes shown for both the Input and Output message descriptions. Coding has been corrected in this publication.

Note: The output messages themselves do NOT include the [transaction code] field.

Output transactions that have been re-labelled to show the correct transaction code in this publication are:

- TCP, TDR, TDU, TID, TIL, TIP, TPA, TPH, TPI, TPM, TPN, TRP/TRR/TRS, TRX

3.0 Source Standards

The PharmaNet message service is based upon the:

- HL7 v2.x Standard;
- Canadian Pharmacist’s Association (CPhA) “Pharmacy Claim Standard”; and
- Other data standards as identified in the PharmaNet specification.

3.1 PharmaNet Segments

Please refer to Section 4.0 (Message Formats) in the Volume 4: Technical Supplement – PharmaNet Message Specifications for details of the following PharmaNet segments:

- MSH
- ZZZ
- ‘ZC’ (e.g., ZCA, ZCB, ZCD, ZCE)
- ‘ZP’ (e.g., ZPX, ZPM, ZPS, ZPU)

4.0 Health Level 7 (HL7) Standards in PharmaNet Messages

4.1 Syntax Rules

This section describes the syntax rules for construction and decomposition of PharmaNet HL7 messages.

A message consists of one or more segments which can be repeated within the message. A segment is constructed of sub-segments and/or data elements.

A message is delimited by the Message Header Segment, which starts with <MSH>, and the end of the message, which must be a carriage return (<CR> or 0x0D) at the end of a segment.

The MSH segment must always be the first segment either transmitted or received. The remaining segments can be in any order. Receiving systems must be able to handle differences in segment order from one message instance to the next (for messages of the same type).

Note: This is a PharmaNet protocol and differs from the HL7 Standard. Also, refer to [Section 6.14 No Fixed Segment Order](#).

The message header is followed by one or more ZZZ “Transaction Control” segments which identify the server transaction(s) to be executed. The transaction segments are followed by the data segments required to permit execution of the server transactions.

There are four levels within each message in PharmaNet:

- A message is a complete construct which is transmitted in one or more physical packages, subject to the 28K maximum total message length.
- The segment is an identified element of a message which may occur only once in a message or may be allowed to repeat.
 - Segments may be required or optional.
 - Each segment has a unique three (3) character code known as the ‘Segment ID’.
- The sub-segment is a set of related data elements which occur within a segment and will have a unique four-character code known as a ‘sub-segment ID’.
- The ‘element’ is the basic unit of data.

The following rules apply to sending and receiving PharmaNet HL7 messages and converting the contents to data values (from the HL7 standard, with modifications):

- Ignore segments, fields, components, subcomponents, and extra repetitions of a field that are present but were not expected.
- Segments that are expected must be present, even if empty.

Note: This is a departure from HL7.

- Fields that are expected must be present.

Note: This is a departure from HL7. PharmaNet expects all field delimiters to be present, even if all fields in the segment are empty.

- The final delimiter prior to the <CR> is optional; in other words, no delimiter ('|') is required after the last field value.
- Segments are delimited with a single <CR>, the message itself is also terminated with a single <CR>. Therefore, at the end of the message two <CR> are expected.
- Treat components that are expected but were not included in a segment as not present.
- In applications that cannot deal with the distinction between data fields that are not present and those that are null, treat data fields that are not present as null.
- If response segments are to be continued across messages, use the PharmaNet continuation protocol, as described in [Section 7.2 NEXT \(00/00\) – Continuation Message](#).

4.2 Syntax Conventions

All HL7 messages for PharmaNet use the following encoding characters.

These special characters must not appear in any segment data field:

Table 1 Syntax Conventions

Character	Name	Description
&	Ampersand	<ul style="list-style-type: none"> HL7 refers to this as a sub-segment component separator. Available for future use.
\	Backslash	<ul style="list-style-type: none"> HL7 refers to this as an escape character. Available for future use.
^	Caret	<ul style="list-style-type: none"> HL7 refers to this as a component separator. It is a data element delimiter used only within sub-segments (e.g., ZPB3).
	Pipe	<ul style="list-style-type: none"> HL7 refers to this as a field separator. It is used only in segments to separate data elements. A pipe is not used in sub-segments (e.g., ZPB3).
~	Tilde	<ul style="list-style-type: none"> HL7 refers to this as a repetition separator. It is a sub-segment delimiter used to indicate the continuation of a sub-segment.

4.3 Data Segments

The full list of PharmaNet segments is published in the BC PharmaNet Terminology Worksheet (i.e., BC-PNet-v70-Terminology.xlsx).

The table below has a partial list, for illustration purposes:

Table 2 Data Segments

Segment Name	Description
ZCA	Message Destination, Purpose and Control Elements
ZCB	Provider Information
ZPA	Patient Information
ZPB	Patient History Response
ZPC	Drug Information Request
ZPP	Patient and Prescription Information
ZPR	Prescription Information Request
ZPX	Original Prescription Information
ZZZ	Transaction Control
...	

For more information see the BC PharmaNet Terminology Worksheet, “Segment ID” tab.

4.4 Data Sub-Segments

A sub-segment is a set of related data elements that occur within a segment. HL7 uses the <^> character to separate elements within the sub-segment. A repetition of a group will be flagged by <~>.

The full list of PharmaNet sub-segments is published in the BC PharmaNet Terminology Worksheet (i.e., BC-PNet-v70-Terminology.xlsx).

The table below has a partial list, for illustration purposes:

Table 3 Data Sub-Segments

Sub-Segment Name	Description
ZPA1	Patient Telephone
ZPA2	Patient Address
ZPB1	Clinical Information Block
ZPX1	Prescription Information
ZZZ1	Additional Transaction Text
....	

For more information see the BC PharmaNet Terminology Worksheet, “Sub-Segment ID” tab.

4.5 Message Syntax

(Corrected for bc.pnet.r7.1 to match HL7 use of {} and [] delimiters.)

A syntactical description of a message at the segment level is:

MSH + ZCA + ZCB {[+ZZZ]} {[+xxx]}

where:

{ } - delimits a repeating segment;

[] - delimits an optional segment;

xxx represents a message segment required to support the transaction request(s) specified by the ZZZ segments present.

Message segments are separated by a <CR> in HL7 syntax.

A 'response' to the request would include:

MSH {[+ZZZ]} {[=yyy]}

'yyy' represents a message segment required in the response to a transaction request.

One of each segment required for the requested transaction must be included (e.g., only one ZCA segment is required, regardless of the number of transactions requested).

4.6 Data Elements

A data element is represented by the actual value in display format; and only needs to contain a:

- field separator,
- segment end, or
- segment repetition indicator to designate the end of the element.

4.7 Field Level Conformance

Field Level conformance descriptions have been modified for release BC.PNET.R70.1. The publication has adopted HL7 conformance level indicators as described in the table below.

Unless otherwise indicated, none of the PharmaNet field-level conformance requirements have changed. However, the newer (HL7) levels are less ambiguous than before and may appear to be more stringent.

(HL7): Usage refers to the circumstances under which an element appears in a message. Some elements must always be present, others may never be present, and others may only be present in certain circumstances. A set of codes has been defined to clearly identify the rules governing the presence of a particular element.

The rules (below) govern the expected behaviour of the sending application and limited restrictions on the receiving application with respect to the element. These usage codes expand/clarify the optionality codes defined in the HL7 standard.

Table 4 Field Level Conformance Rules

Value	Description	Comment
R	Required	<p>A conforming sending application shall populate all "R" elements with a non-empty value.</p> <p>Conforming receiving application shall process (e.g., save/print/archive) or ignore the information conveyed by required elements.</p> <p>A conforming receiving application must not raise an error due to the presence of a required element, but may raise an error due to the absence of a required element.</p> <p>Any element designated as required in a standard HL7 message definition shall also be required in all HL7 message profiles of that standard message.</p>

Value	Description	Comment
RE	Required but may be empty	<p>The element may be missing from the message, but must be sent by the sending application if there is relevant data.</p> <p>A conforming sending application must be capable of providing contents for all "RE" elements.</p> <p>If the conforming sending application knows the required values for the element, then it must send that element.</p> <p>If the conforming sending application does not know the required values, then that element will be omitted.</p> <p>Receiving applications will be expected to process (e.g., save/print/archive) or ignore data contained in the element, but must be able to successfully process the message if the element is omitted (no error message should be generated because the element is missing).</p>
O	Optional	<p>This code indicates that the Usage for this element has not yet been defined.</p> <p>A usage of 'Optional' may not be used in 'implementation' profiles (no-optionality profiles).</p> <p>Conformance may not be tested on an Optional field.</p> <p>Narrower profiles may be defined based on this profile, and may assign any usage code to the element.</p>
C	Conditional	<p>This usage has an associated condition predicate.</p> <p>If the predicate is satisfied:</p> <ul style="list-style-type: none"> • A conformant sending application must always send the element. • A conformant receiving application must process or ignore data in the element. • It may raise an error if the element is not present. <p>If the predicate is NOT satisfied:</p> <ul style="list-style-type: none"> • A conformant sending application must NOT send the element. • A conformant receiving application must NOT raise an error if the condition predicate is false and the element is not present, though it may raise an error if the element IS present.

Value	Description	Comment
CE	Conditional but it may be empty	<p>This usage has an associated condition predicate.</p> <p>If the predicate is satisfied:</p> <ul style="list-style-type: none"> • If the conforming sending application knows the required values for the element, then the application must send the element. • If the conforming sending application does not know the values required for this element, then the element shall be omitted. • The conforming sending application must be capable of knowing the element (when the predicate is true) for all "CE" elements. • If the element is present, the conformant receiving application shall process (e.g., display/print/archive) or ignore the values of that element. • If the element is not present, the conformant receiving application shall not raise an error due to the presence or absence of the element. <p>If the predicate is not satisfied:</p> <ul style="list-style-type: none"> • The conformant sending application shall not populate the element. • The conformant receiving application may raise an application error if the element is present.
X	Not Supported	<p>For conformant sending applications, the element will not be sent.</p> <p>Conformant receiving applications may ignore the element if it is sent, or may raise an application error.</p>

Reference: [HL7 International – Conformance Implementation Manual](#)

5.0 CPhA Standards

Messages will follow the data content definitions of the Canadian Pharmaceutical Association (CPhA) Pharmacy Claim Standard where appropriate, encapsulated in HL7 structures. Within the claim, HL7 delimiters should be used for message compression.

The CPhA Pharmacy Claim Standard defines all alphabetic data to be upper case. Therefore, all CPhA data sent to/from PharmaNet must be in upper case.

CPhA standard messages are identified by ZCx where x is the corresponding CPhA segment identifier.

Non-CPhA standard messages are identified as ZPx where x is the specific identifier.

Messages beyond the scope of the CPhA standard are:

- NEXT – Message Continuation
- ZPA – Patient Information Message
- ZPB – Patient Medication History Profile Response
- ZPC – Drug Information Request
- ZPD – Drug Information Response
- ZPE – Drug Utilization Evaluation (DUE) Response
- ZPH – Practitioner/Prescriber Information
- ZPI – Participant Message (Fan-Out)
- ZPK – Authority Information
- ZPL – Location Information
- ZPM – MMI and Clinical Services Information
- ZPP – Patient Prescription Information
- ZPR – Prescription Information Request
- ZPV – MMI and Clinical Services Response
- ZPX - Original Prescription Information

6.0 Notes to Implementers

6.1 “Location ID” as POS Identifier

The term Pharmacy ID was previously used for Pharmacy integration with PharmaNet to uniquely identify each PharmaNet location or site. Now that other POS locations are connecting to Ministry HIE systems, the term Location ID is used to uniquely identify each POS and is not restricted to pharmacies.

Each POS location is assigned a unique Location ID. Software organizations with multiple POS connecting to PharmaNet must ensure that each of their client POS locations unique Location ID is used to distinguish messages sent to/from that particular POS.

For example: A medical practice EMR system must include each clinic’s unique Location ID in the messages sent to and from PharmaNet.

6.2 PharmaNet Versioning

PharmaNet versioning is only loosely related to any particular CPhA version and there have been no obvious attempts to achieve or maintain CPhA conformance over the years. V70 is an arbitrary version number assigned to the most recent PharmaNet message version to distinguish it from the concurrently supported legacy V3 PharmaNet message version.

The PharmaNet transaction version is identified - in messages - by the value in the [ZCA.CPhA Version Number] field. A value of ‘03’ indicates the previous version of the PharmaNet messages. A value of ‘70’ is used to identify the newer messages (circa 2011) developed by the PharmaNet Modernization Project.

6.3 Publication Identifier

Previous PharmaNet publications were identified solely by the corresponding CPhA version number (along with version identifiers on individual documents). Starting with the 2015 publication a release identifier has been assigned by the Ministry of Health to the package as a whole.

Example: “bc.pnet.r03.1” (or “BC.PNET.R03.1”)

Syntax: <province>.<message service domain>.”r”(fixed value, meaning ‘release’)<PharmaNet major release number>.<PharmaNet minor release number>

Major release numbers use the corresponding CPhA number and in the messages the identifier will be changed in [ZCA.CPhA Version Number].

Minor release numbers are incremental and are used whenever the technical publication package is updated. Message changes in the package, if any, will be backward compatible.

6.4 Participant Messages (Fan-Out)

PharmaNet Participant Messaging (aka “Fan-Out”) is a means of broadcasting urgent messages (e.g., advisory messages, system disruptions) to specific groups or locations connected to PharmaNet. Messages are sent to all registered PharmaNet users at the POS location.

When a POS system transaction is processed, PharmaNet checks to determine if any message(s) are pending for the POS. If there are, the pending message(s) are added to the transaction response message and returned to the user who submitted the transaction.

Fan-out messages are created by appending an optional [ZPI] segment to the following transactions:

- TCP, TDR, TDU, TID, TIL, TIP, TMU, TPI, TPM, TRX

Fan-out messages contain only message text, and are limited to 320 characters.

6.5 Interpreting Transaction Responses

The following methods are used to determine whether a PharmaNet message was successful or not.

ZZZ (Transaction Control) Segment

Each transaction submitted to PharmaNet will include at least one ZZZ segment. On every response, the response status field of this segment will contain a value of either 0 or 1 and the transaction text field will contain a message related to the transaction. If the response status is 0, the transaction text field will contain one of the following:

- All blanks (i.e., successful)
- '0 – Operation Successful'
- A warning message (i.e., '66 – Warning – Last Name and First Name do not match supplied names').

A value of 1 means the transaction did not perform its intended function.

Note: Even though the transmission was successful, the transaction might not have been successful (e.g., a record may not have been added because the record already existed).

If the response status field is 1, the transaction text field will contain the application error message.

Examples of these messages are:

- 101 – PRESCRIBER not found
- 108 – No matches found for selection criteria chosen
- 121 – This is a Duplicate Prescription

Note: DUE messages are not error messages and do not constitute a transaction failure.

ZZZ1 (Additional Transaction Text) Sub-Segment

The ZZZ1 (Additional Transaction Text) is a sub-segment that was added to ZZZ to convey additional warnings returned by the new versions of PharmaNet transactions (i.e., V70 transactions), apparently because the 80 bytes in the ZZZ transaction text were no longer sufficient.

The ZZZ1.2 [Additional Transaction Text] field may be used in following cases (the list below is meant to be illustrative rather than exhaustive):

- DIN/PIN of ZPX segment is zeros and “do not substitute” is set to “Y”;
- prescription date is greater than patient’s date of death;
- total prescription quantity exceeded;
- invalid first name;
- first or last name mismatch;
- invalid last name;
- date of birth is not numeric or invalid;
- duplicate prescription.

What the warning in ZZZ1 means is that there was an issue with a non-crucial piece of information that did not impact the success of the operation. These warning messages should be displayed to the end users according to the application enforced rules.

ZCE (Claim Response Elements) Segment

The ZCE (Claim Response Elements) segment is used for the transmission of claims information (i.e., TAC transaction). It contains two fields that indicate the action taken with the claim:

- Response code field. Up to five CPhA response codes could be listed (i.e., 'A3' which translates to 'Identical claim has been processed')
- Response status field. A complete list of response statuses and response codes may be found in the CPhA Pharmacy Claim Standard.

The most complicated message is the one related to the dispensing of a prescription. In this case, the input message may be TAC/TDU/TRP. This combination is only deemed successful if:

- Response status field in ZZZ for TAC was '0'
- Transaction text field in ZZZ for TAC was blank
- Response status field in ZZZ for TDU was '0'
- Transaction text field in ZZZ for TDU was blank or '0 – Operation Successful'
- Response status field in ZZZ for TRP was '0'
- Transaction text field in ZZZ for TRP was blank or '0 – Operation Successful'
- Response status field in ZCE was either 'A (Accepted as transmitted-no adjustments), or 'V' (Reversal Accepted); and
- All five response codes in ZCE are blank.

6.6 Combination Transactions

Combination messages that fulfill several different requests at the same time can be sent to PharmaNet. The TAC “Adjudication Request” is a combination message because it is always accompanied by a TDU (a Drug Utilization Evaluation request). For this reason, it is often referred to as a “TAC/TDU” message. Both the TAC and the standalone TDU message can also include a patient profile query request and therefore contain three concurrent requests.

Table 5 Combination Transactions

Message Type	Optional Inclusions	Comment
TAC/TDU (01 or 04)	TRP, TRR, TRS	Limit of one optional query request type per message
TAC/TDU (11)	None	
TDU (00)	TRP, TRR, TRS	As above

A combination request is sent as a single message instance containing all the information/segments of the individual message types. The receiving system identifies the individual request components by the different ZZZ segments in the message. There will be one ZZZ segment for each request type in the composite message.

PharmaNet does not respond to a combination message request until it has gathered all the component message replies and has evaluated each one for success or failure. If one or more of the component messages is NOT successful, then all component responses are set to be NOT successful, and the response is constructed and returned to the client.

See the individual message descriptions for further details.

6.7 Data Padding Deprecated

Beginning with bc.pnet.r70.1 the requirement for text justification and padding has been deprecated.

The requirement for text justification and padding has been deprecated for A, N, D# and TXT datatypes. PharmaNet will continue to support padded fields for legacy implementations, but padding is no longer required.

Padding is removed from:

- inbound data stored by PharmaNet; and
- data returned by PharmaNet (e.g., inquiry responses).

PharmaNet has discontinued the practice of setting default values for datatypes. Defaults are set as part of field-level requirements.

The DT datatype has been constrained (to 8 characters) and supplemented with a new “DT6” datatype for dates. DT6 replaces the previous DT datatype for all date fields that were constrained to YYMMDD.

The following fields are affected by this change:

- ZCB.13 [ZCB.Provider Transaction Date]
- ZCE.3 [ZCE.Adjudication Date]
- ZCF.3 [ZCF.Adjudication Date]
- ZCG.3 [ZCG.Adjudication Date]
- ZCG.79 [ZCG.Date of Deposits]
- ZCH.3 [ZCH.Adjudication Date]
- ZPT.3 [ZPT.Adjudication Date]

This change is backward compatible; and legacy implementations that are padding date fields to 8 characters (6 significant digits plus 2 spaces) are still supported.

For details refer to Volume 4: Technical Supplement – PharmaNet Message Specifications.

6.8 Trace Numbers

The POS application must generate unique trace numbers. The trace number is used to uniquely identify the transaction (primarily for re-transmission purposes but also for auditing purposes). It is a 6-digit number that is put in the “Trace Number” field of ZZZ, ZCB, ZCE, ZPM, ZCG, ZPT and ZPX. It must have the same value for all segments instances in a message where required.

See the contents of the [ZZZ.Trace Number] field for details.

Note: The 20-character Control ID Trace # in [MSH.Control ID Trace Number] is required by PharmaNet and is validated for format. However, PharmaNet does not use this field. The value sent on input is returned on output. This field can contain the same numeric value as the trace number.

6.9 Retransmission of TAC/TDU Combination Transactions

For combination transactions, if a response is not received from a submitted transaction, the transaction must be submitted as a re-transmission. A minimum of one re-transmission is required.

To identify a re-transmission as opposed to the original transaction:

- In re-transmissions, the transaction is identical to the original except the Response Status (ZZZ.2) field of each ZZZ segment of the inbound message requires an ‘R’.
- In original transmissions the Response Status field of each ZZZ segment is blank.

The population of ZZZ.2 for a retransmission is available in TAC/TDU 01, 04, and 11.

Retransmission is also allowed for the following messages when combined with a TAC/TDU request message:

- TRX-X1
- TRX-X2
- TRX-X3
- TMU 01
- TMU 11

Retransmissions do not apply to inquiry transactions (i.e., TRP, TRX-X0) since inquiries are non-updating.

6.10 Batch Processing

Some PharmaNet documentation refers to batch processing. This is reference to POS application processing to do with contingencies (e.g., network down, or in support of contractual services like Pharmacare Plan B). There is no message transaction for batch processing.

Note: PharmaNet does not distinguish between real-time and (POS) batch process transactions.

6.11 Unique Dispense Numbers

Assigning unique dispense identifiers once to each dispense ensures all dispenses are returned when a detail request is made.

If an identifier is reused some dispenses may not be included in the results of a TDT detail transaction.

For example:

- Dispense #14 is submitted and then reversed, leaving a record in PharmaNet.
- Because #14 was reversed, it is then used again for a successful transaction.
- This leaves 2 records with a dispense #14 in PharmaNet. If 0 is then entered in the Beginning of Record field, the first fourteen (14) dispenses including the reversed dispense #14, but not the second, will be returned.
- As #14 is the last number received, #14 would then be used as the Beginning of Record on the next request.
- This causes the first local number returned to be #15 (14 plus 1), thus missing the second dispense #14.

6.12 PharmaNet Version 70 Release Changes

This technical implementation package includes the following:

1. New transactions for PharmaNet v70 release:
 - a. TIL (00/50) Get Location Details
 - b. TRX (X0/X5) Retrieve Patient Prescription
 - c. TRX (X1/X6) Record Prescription
 - d. TRX (X2/X7) Change Prescription Status
 - e. TRX (X3/X8) Adapt Prescription
 - f. TRX (X4/X9) Retrieve Prescriber Prescription
2. Pre-existing v03 transaction that may contain modifications for PharmaNet v70 release development:
 - a. TAC (01/04/51/54) Adjudicate Pharmacare Claim
 - b. TAC (11/61) Adjudicate Pharmacare Claim Reversal
 - c. TDU (00/50) Drug Utilization Evaluation
 - d. TDU/TRP/TRR/TRS Combinations
 - e. TMU (01/51) Medication Update
 - f. TMU (11/61) Medication Update Reversal
 - g. TRP (00/50) Request Patient Medication Profile – Last 14 Months
 - h. TRR (00/50) Retrieve Patient Medication Profile – Most Recent Only
 - i. TRS (00/50) Retrieve Patient Medication Profile – Filled Elsewhere

6.13 PharmaNet Transaction Codes

PharmaNet transaction codes are based upon the CPhA Standard, with modifications as described below. A PharmaNet transaction code, in HL7 terms, is similar to a ‘trigger event’ code. However, PharmaNet does not support the MSH.9 field where the event code would normally be found. Instead, the transaction code is present in ZCA.3, aka the [ZCA.Transaction Code] field.

The [ZCA.Transaction Code] is required on all inbound transactions and in combination with the contents of [ZZZ.Transaction Id] identifies the type of message being sent to PharmaNet.

PharmaNet returns the corresponding response transaction code in ZCA on outbound messages, with certain exceptions:

- For all Transaction Code = “00” messages PharmaNet does NOT provide the ZCA segment in its response message (in which case the transaction code is inferred); and,
- PharmaNet internally uses a generic transaction code “50” for these same response messages.

Note: This is the same code used in the documentation in this package.

PharmaNet codes are described in detail on the “Transaction Code” tab of the BC PharmaNet Terminology Worksheet.

6.14 No Fixed Segment Order

Apart from the MSH segment always having to be first in each message instance there is no fixed segment order for PharmaNet messages. See [Section 3.0 Source Standards](#).

This has a number of consequences for PharmaNet messaging:

- Segment order in the published message definition does not guarantee that production messages will follow the same order.
- Repeating segments within a message may not be contiguous in the body of the message.
- There is no predictable pattern for returned segments including messages of the same type; except that:
 - Pre-sorted segments (e.g. in a query response) will normally be grouped together and be in the sort order defined for the message.
- HL7-style grouping and nesting of segments in a message definition is not supported by PharmaNet.

Note: These features of the PharmaNet messages may limit the usefulness of HL7-aware tools that expect a fixed-order message definition.

6.15 Messaging Workbench (MWB) Tool

The MWB is an open-source tool which can be used to:

- build PharmaNet message models, HL7 conformance profiles, and message specifications; and
- test sample messages.

It is available for download at:

- http://gforge.hl7.org/gf/project/mwb/frs/?action=FrsReleaseBrowse&frs_package_id=94

Note: This application is required to open the message model examples provided within the R70.5 technical package.

6.16 Patient Protective Word

If a patient protective word is required, it must be submitted to PharmaNet with every message (e.g., TCP, TDU, TPM, TRP, TRX).

Note: The protective word has historically been referred to as the patient keyword.

6.17 Segment Encryption

There are 3 segments (i.e., ZCC, ZPA, and ZPP) in PharmaNet that include patient identifiable information and as a result are encrypted coming to and leaving from PharmaNet.

The format for all encrypted segments is the same:

- <segment id><4-byte size of initially unencrypted data in this segment><encrypted data>

For example:

- ZCC00342àúíaE'òü}»ìòÉé—f~'-b†šK÷ùl½HäP&ýlc
- ZPA0198|&-¿úOJ-ï-Ne7ù(°í»æ3ùn PáFz4JQJ7NèNÀÔ6ASÓ«Eï \$x?Òfp

Refer to the TAC/TDU and TPA sample messages.

6.18 Error Response Message

Note(s): Please refer to the BC PharmaNet Terminology Worksheet for additional information regarding PharmaNet Errors/Warnings.

A minimal error response message will consist of an MSH segment, each of the ZZZ control segments from the request and a ZCB segment.

See [Section 7.1 Acknowledgement Response](#) for details.

PharmaNet ignores an incoming request if the first three characters in the incoming transaction are not “MSH” (i.e., even a single white space or control character preceding ‘MSH’ or anything else other than MSH as the first three characters would result in no response being sent).

Host Processing Error

If the E1 response is returned with a BIN of ‘1’ in the ZCA segment, then the Host Processing Error must be displayed because a serious error has occurred.

6.19 Optional Fields Submitted

If the patient's last name, first name, date of birth or gender is submitted to PharmaNet and does not match PharmaNet data, the transaction is not rejected, but the appropriate response codes will be returned in the ZCE segment.

Only the first two characters of the last name and the first character of the first name are checked against the patient's record.

Some patient records in PharmaNet have the patient's gender set to 'U' (unknown). If a claim for such a patient is sent to PharmaNet with the known gender (e.g., M or F) it will cause a response code in the ZCE segment since it is not an exact match.

Optional fields may be returned and validated in the response.

For further details, please refer to:

- BC PharmaNet Terminology Worksheet
- PharmaNet Warnings and Error Response Specifications.
- Volume 4C: Technical Supplement – PharmaNet Message Specifications

7.0 PharmaNet Transactions

This section describes the message transactions that are supported by PharmaNet.

Typically, each transaction will consist of two interactions:

- input message (to PharmaNet); and
- output message.

These are described in the tables below.

Detailed, field-level specifications for each message are published separately as stand-alone documents in the technical implementation package.

Sequence Diagram

The UML sequence diagram:

- models the logic flow between two or more systems.
- illustrates the normal and alternative flows (see [Figure 1 - PNet Sequence Diagram](#)).

Normal Flow:

- POS sends an input (request) message to PharmaNet;
- PharmaNet processes the request message;
- PharmaNet sends the response message back.

Alternative Flow:

- POS sends an input (request) message to PharmaNet;
- PharmaNet processes the message;
- PharmaNet sends an error response message back.

See [Section 6.18 Error Response Message](#) and [Section 7.1 Acknowledgement Response](#) for details.

Exception Flow:

- POS sends an input (request) message to PharmaNet;
- POS does not receive a response message and the timeout period has elapsed;
- POS applies retransmission rules if required.

The POS may not receive the response message for many reasons, for example, the timeout period is elapsed prior to completion of PharmaNet processing, PharmaNet is not responding, or the response message is lost.

Refer to [Section 6.9 Retransmission of TAC/TDU Combination Transactions.](#)

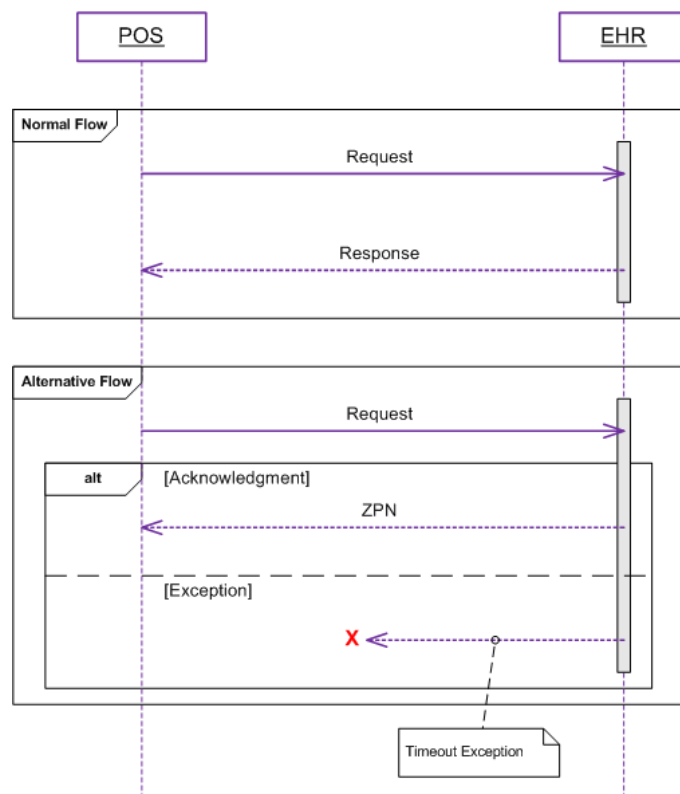


Figure 1 - PNet Sequence Diagram

7.1 Acknowledgement Response

Upon validation of an inbound message, the PharmaNet system performs one of these functions:

- process the message successfully, generating the functional response message.
- process the message successfully, generating a positive acknowledgement message.
- send an error response, providing error information in the transaction control segment(s) due to inability to process the inbound message for reasons (un)related to its content or format.

PharmaNet uses a predefined message structure for the positive or negative acknowledgement responses. However, such message is lacking a specific interaction ID, message type, specific trigger event and CPhA version.

There are a couple situations when the response message is not generated by the backend application:

- when a request message fails conformance in the Router application;
- when there is a timeout due to the response not arriving at the Router application.

In these two situations an Acknowledgement Response is generated and returned.

Message Interactions:

Table 6 Acknowledgement Response - Output

Interaction ID	N/A
Interaction Business Name	[Acknowledgement Response - Output]
Interaction Description	An Acknowledgment Response message is used where the responding application does not define a functional response message.
Considerations	MSH, ZCB, ZZZ segments are required for all acknowledgment response messages.

Interaction ID	N/A	
Developer Guidance	<p>The ZZZ segment in the error response message appears as many times as they were in originally submitted request message.</p> <p>Thus, if the original request message contains two or more ZZZ segments (e.g., TAC/TDU, TDU/TRP or TAC/TDU/TRP group transactions) then the Error Response message should also contain the corresponding number of ZZZ segments.</p> <p>The Response Status [ZZZ.2] is set to “1”.</p> <p>The error code and error message associated with this transaction is returned in the Transaction Text [ZZZ.7] field.</p>	
Trigger Event	N/A	
CPhA Version	N/A	
Message Model	MSH	Message Header
	ZCB	CPhA Segment B - Provider Information
	{ZZZ}	Transaction Control

7.2 NEXT (00/00) – Continuation Message

The NEXT transaction is the PharmaNet implementation of the HL7 continuation protocol. This is a polling type of transaction that retrieves the components of a large PharmaNet response message. The response message is returned in < 28K sized blocks.

Sequence Diagram

This sequence diagram represents the normal and exception flows of the NEXT transaction (see [Figure 2 - NEXT Transaction Sequence Diagram](#)).

Normal Flow:

- POS sends an input (request) message to PharmaNet;
- PharmaNet processes the request message;
- PharmaNet sends the response message back indicating that this response message exceeds 28K;
- POS receives the first block of the message
- POS sends the NEXT request to PharmaNet;
- PharmaNet sends the subsequent message blocks.

Exception Flow 1:

- POS sends an input (request) message to PharmaNet;
- POS does not receive a response message back and the timeout period has elapsed.

Exception Flow 2:

- POS sends an initial or subsequent request message to PharmaNet;
- PharmaNet responds with a corresponding message block;
- PharmaNet does not receive a NEXT request and will time out.

NEXT does not support retransmission, the POS must retransmit the original request.

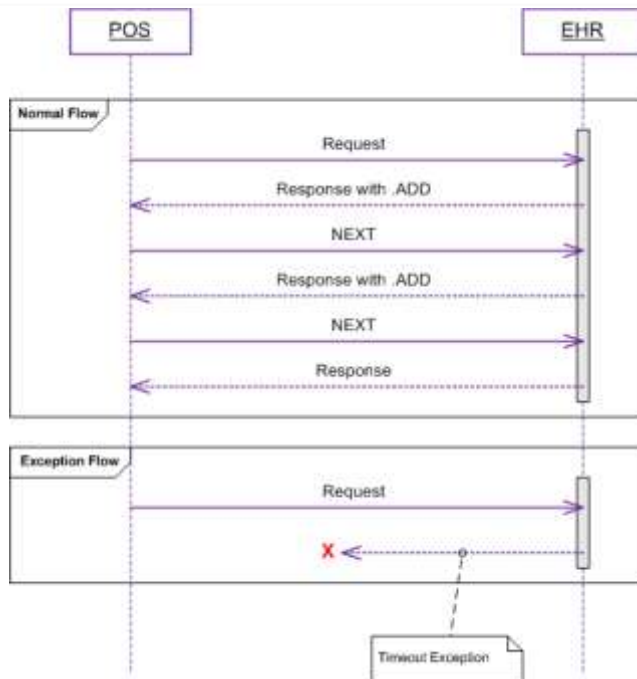


Figure 2 - NEXT Transaction Sequence Diagram

Message Interactions:

Table 7 NEXT_M_REQUEST

Interaction ID	NEXT_M_REQUEST
Interaction Business Name	Request the Next Message Block – NEXT (M) – input
Interaction Description	<p>The total length of any PharmaNet response message should not exceed 28K limit range.</p> <p>In cases when a response message goes over this limit, the Message Interface (server) breaks the response message into as many blocks, each of which is up to or smaller than 28K, as required.</p> <p>On DOS and UNIX based systems, to request the next block the POS system will send a NEXT message (which is simply an MSH segment that includes a continuation pointer).</p> <p>To receive subsequent message blocks, the client has to explicitly send NEXT request messages to the server.</p> <p>Where a response exceeds the 28K maximum, only full segments of the message will be contained in each block.</p> <p>This may result in a block of less than 28K so that the segment preceding the overflow will be included in its entirety, but not the partial segment causing the overflow.</p> <p>The exception to this is when a ZPB segment exceeds the 28K size.</p> <p>In this case, the segment will be split at an appropriate sub-segment (e.g., the end of a ZPB3).</p> <p>The assumed message flow to poll a large message is as follows:</p> <ol style="list-style-type: none"> 1. Client opens a connection to PharmaNet 2. Client sends a request. 3. PharmaNet sends a response. 4. Client receives the response. <ol style="list-style-type: none"> a. If there is no ADD indicator the client will close the connection to PharmaNet b. If there is an ADD indicator, then the client will send a NEXT request.

Interaction ID	NEXT_M_REQUEST	
	<p>c. The client will time out and close the connection after 90 seconds waiting for a response.</p> <p>5. PharmaNet receives the NEXT request and sends the response; Go to step 4 above.</p>	
Considerations	<p>Whether the user chooses to view all of a large (>28K) patient medication profile or not, the POS system must request the additional segments at all times.</p> <p>Since the order of the segments is not guaranteed, there may be additional segments or messages after the large segment.</p> <p>The remaining blocks of the message are retained in PharmaNet for up to five minutes, or until the last section of the message has been transmitted.</p>	
Developer Guidance	<p>The following is an example of a 28K NEXT request:</p> <pre>MSH ^~\& SEND APP SEND FACILITY PP 1997/02/18 11:11:11 M 1000 P 2.1 NEXT^ZCB^BC00000HC4^110401 ^101159<CR><CR></pre> <p>The NEXT value (MSH.14.1) can be considered a fixed value as part of the MSH.14 when requesting the next page of data.</p>	
Trigger Event	00	
CPhA Version	03, 70	
Message Model	MSH	Message Header (for NEXT only)

Table 8 <Continuation RESPONSE>

Interaction ID	<Continuation RESPONSE>
Interaction Business Name	The business name of the transaction depends on the originally sent message.
Interaction Description	PharmaNet returns a portion of the originally requested message.
Considerations	<p>If the receiver closes the connection due to a time out waiting for a response from PharmaNet, the next step depends on what the receiver was doing.</p> <p>In the case of waiting for a response from a NEXT request, the receiver will need to do the whole request again from the beginning, doing a TAC/TDU reversal first if necessary.</p>
Developer Guidance	<p>The ADD and NEXT are applicable to any message that exceeds the 28KB limit for a single response.</p> <p>The ADD will be added to the end of the response message just prior to the <CR><CR> message terminator.</p> <p>The ADD can appear after any segment.</p> <p>The response message won't be truncated mid segment.</p> <p>The application will always break the message up on segment boundaries.</p> <p>The following is an example of the first response message with .ADD indicator at the end.</p> <pre>MSH ^~& ... NA ... NA ZPN 101159 P 2.1 ZCB <snip> ZZZ ... ZCC ZPB ZPB3^2084198^....^^^~ZPB3^2084198^....^^^.....~ZPB 3^....^^^~.ADD</pre> <p>The following is an example of the subsequent response message with the echo'd continuation pointer (from the request) and an .ADD indicator (because there are more blocks to be returned):</p> <pre>MSH ^~& ... NA PNP PP ZPN 101159 P 2.1 NEXT^ZC B^BC0000HC4^110401^101159</pre>

Interaction ID	<Continuation RESPONSE>	
	<p>ZPB3^2084198^....^^^~ZPB3^....~ZPB3^....~ZPB3^.... ~ZPB3^2084198^....^^^~.ADD</p> <p>The following is an example of the final block of the response message (no .ADD indicator at the end):</p> <p>MSH ^~\& NA PNP PP ZPN 101159 P 2.1 NEXT^ZC B^BC0000HC4^110401^101159</p> <p>ZPB3^2084198^....^^^....~ZPB3^....^^^TAKE ONE A DAY^^^</p> <p>Complete samples are in the SampleMessages/NEXT folder.</p>	
Trigger Event	00	
CPhA Version	03, 70	
Message Model	MSH	Message Header with NEXT pointer
	For list of other segments refer to the appropriate response message section.

7.3 TAC/TDU (01/04/51/54) – Adjudicate Pharmacare Claim

The TAC (Adjudicate Claim) update transaction is used by Pharmacies to submit a claim for a dispense of a medication, a dispense of a device, or a 'Refusal to Fill' to PharmaNet for adjudication.

The TAC portion of the TAC/TDU transaction represents the financial component of a claim and the TDU portion the DUE. To process a complete dispense, a TAC and TDU must be transmitted.

Message Interactions:

Table 9 TACTDU_0104_REQUEST

Interaction ID	TACTDU_0104_REQUEST
Interaction Business Name	Adjudicate a Dispense Claim TAC/TDU_01_04 - Input
Interaction Description	<p>This is a synchronous transaction.</p> <p>This is a combination message containing two and possibly three concurrent requests.</p>
Considerations	<p>MSH, ZZZ, ZCA, ZCB segments are required on all requests.</p> <p>Encryption will be used on existing segments that contain Patient identifiers (i.e., ZCC, ZPA).</p> <p>TDU is mandatory.</p> <p>TAC/TDU can be combined with a query request for a TRP, TRR or TRS profile.</p> <p>(One only, per message instance).</p> <p>[ZCC.Patient First Name] is partially validated by PharmaNet. First character must match.[ZCC.Patient Last Name] is partially validated by PharmaNet. First two characters must match.</p> <p>Modifications for bc.pnet.r70 (do not use with bc.pnet.r03 development):</p> <p>The TAC version 70 transaction allows Medication Management Issue (MMI) Codes and Clinical Service Codes to be submitted with a claim in a new optional message segment (ZPM).</p> <p>The PharmaNet Prescription Identifier is not present in the PharmaNet version 03 transaction request message; therefore, for these transactions the absence of a PharmaNet Prescription Identifier will not cause the claim to be rejected.</p>

Interaction ID	TACTDU_0104_REQUEST
Developer Guidance	<p>The request message contains three distinct server requests, a TAC, a TDU and, optionally, one of three possible profile requests.</p> <p>Each request is identified by a separate ZZZ segment in the message.</p> <p>(See requirements for the individual profile requests, which are the same in this combined message.)</p> <p>PharmaNet requires only one ZCA segment for combination messages.</p> <p>This rule is an exception to the usual protocol in which individual message types have a specific (and different) value for [ZCA.Transaction Code].</p> <p>The composite message contains only the transaction code value for the “primary” request, in this case the TAC.</p> <p>The Transaction code for the other request types in the composite message is inferred from the contents of the ZZZ segment.</p> <p>The rules for Trace Number are the same for combination transactions.</p> <p>The message model below contains a number of logical segment groups.</p> <p>However, apart from MSH being the first, the segments can be sent in any order.</p> <p>A claim request with a Refusal to Fill is identified by using the appropriate intervention code within the [ZCD.Intervention and Exception] field.</p>
Trigger Event	01, 04, (00)
CPhA Version	03, 70

Interaction ID	TACTDU_0104_REQUEST	
Message Model	MSH	Message Header
	{ ZZZ	Transaction Control (TDU)
	ZCA	CPhA Segment A - Message Destination, Purpose and Control Elements
	ZCB	CPhA Segment B - Provider Information
	ZCC	CPhA Segment C - Beneficiary Information
	ZCD	CPhA Segment D - Prescription and Professional Service Information
	}	End of segment group
	{ ZZZ	Transaction Control (TAC)
	ZPJ	Claim Information
	[ZPM]	PharmaNet Segment M - MMI and Clinical Services Information
	}	End of segment group
	[ZZZ]	Transaction Control (TRP, TRR, TRS)

Table 10 TACTDU_5154_RESPONSE

Interaction ID	TACTDU_5154_RESPONSE
Interaction Business Name	Adjudicate a Dispense Claim TAC/TDU_5154 - Output
Interaction Description	This is the response message.
Considerations	<p>Warning and error messages must be displayed and comply with the mandatory display standards for the transaction.</p> <p>Test for any of the following:</p> <ul style="list-style-type: none"> • A response status field not equaling: <ul style="list-style-type: none"> ○ '0' for each ZZZ segment returned. ○ 'Y' for each ZCG segment returned. ○ 'Z' for each ZCH segment returned. • A transaction text field not equaling 'blanks' or '0 - Operation Successful' for each ZZZ segment returned. • A response status field in the ZCE segment (if returned) not equal to 'A' or 'V' and the response codes field in the ZCE segment (if returned) is not blank. <p>If a PHN has been merged the new PHN is returned in the [ZCC.Provincial Health Care ID] field in the response.</p> <p><u>Retransmitted claim response:</u></p> <p>When a TAC/TDU is retransmitted and the PharmaCare claim has already been processed (i.e., an exact match is found on the Medication History table), the retransmitted claim will not be added to the Medication History table or the Claims History table a second time.</p> <p>DUE processing will be redone and the original PharmaCare claim results will be returned.</p> <p><u>Duplicate dispense:</u></p> <p>A duplicate dispense is a second dispense coming from the same pharmacy, with the same PHN, DIN and provider Transaction Date.</p> <p>If a duplicate dispense is sent, PharmaNet will set the Response Status field of the ZZZ segments to 1 and the TDU ZZZ segment's Transaction Text field will contain the message</p>

Interaction ID	TACTDU_5154_RESPONSE										
	<p>'121 This is a Duplicate Prescription'.</p> <p>The transaction will not be logged on either the medication history or the PharmaCare claims history.</p> <p>If the claim is rejected an error is returned.</p>										
Developer Guidance	<p><u>Order of DUE Messages:</u></p> <p>The DUE messages (in [ZPE] segment) must be displayed in the order returned by PharmaNet. The order is as follows:</p> <table border="1" data-bbox="565 730 1187 1062"> <tbody> <tr> <td>Drug To Drug Interactions</td> <td>up to 10 encounters</td> </tr> <tr> <td>Drug to Prior Adverse Reactions</td> <td>up to 5 encounters</td> </tr> <tr> <td>Min/Max Dosages</td> <td>up to 1 encounter</td> </tr> <tr> <td>Duplicate Ingredient/Therapy</td> <td>up to 10 encounters</td> </tr> <tr> <td>T00 S00n/T00 Late (Compliance)</td> <td>up to 1 encounter</td> </tr> </tbody> </table> <p>PharmaNet does not respond to a combination message request until it has gathered all the component message replies and has evaluated each one for success or failure.</p> <p>If one or more of the component messages is not successful then all component responses are set to be not successful and the response is constructed and returned to the client.</p> <p>There is no message flag for a replacement PHN. Receiver must test for a different value in [ZCC.Provincial Health Care ID].</p> <p>PharmaNet has a known bug that sometimes results in an incomplete response message that does not include the TDU result.</p> <p>The message model (below) contains a number of logical segment groups.</p> <p>However, apart from MSH being the first, the <i>segments may be returned in any order</i> by PharmaNet.</p>	Drug To Drug Interactions	up to 10 encounters	Drug to Prior Adverse Reactions	up to 5 encounters	Min/Max Dosages	up to 1 encounter	Duplicate Ingredient/Therapy	up to 10 encounters	T00 S00n/T00 Late (Compliance)	up to 1 encounter
Drug To Drug Interactions	up to 10 encounters										
Drug to Prior Adverse Reactions	up to 5 encounters										
Min/Max Dosages	up to 1 encounter										
Duplicate Ingredient/Therapy	up to 10 encounters										
T00 S00n/T00 Late (Compliance)	up to 1 encounter										
Trigger Event	51, 54, (50, 00)										
CPhA Version	03, 70										

Interaction ID	TACTDU_5154_RESPONSE	
Message Model	MSH	Message Header
	[TAC response group
	ZZZ	Transaction Control (TAC)
	[ZCA]	CPhA Segment A - Message Destination, Purpose and Control Elements
	ZCB	CPhA Segment B - Provider Information
	[ZCC]	CPhA Segment C - Beneficiary Information
	[ZCE]	CPhA Segment E – Claim Response
]	End of TAC segment group
	[TDU response group
	ZZZ	Transaction Control (TDU)
	{{ZPE}}	DUE Response
]	End of TDU segment group
	[Profile Query Response group
	ZZZ	Transaction Control (TRP, TRR or TRS)
	[ZPB]	Patient History Response
]	End of segment group
	[ZPI]	Fan-Out

7.4 TAC/TDU (11/61) – Adjudicate Pharmacare Claim Reversal

The TAC Claim Reversal transaction is used by Pharmacies to reverse a claim of a medication, a device, or a 'Refusal to Fill'.

Message Interactions:

Table 11 TACTDU_11_REQUEST

Interaction ID	TACTDU_11_REQUEST
Interaction Business Name	Adjudicate a Dispense Claim Reversal TAC/TDU (11) - Input
Interaction Description	This is a combination message containing two requests.
Considerations	<p>MSH, ZZZ, ZCA, ZCB segments are required on all requests.</p> <p>Encryption will be used on existing segments that contain Patient identifiers (i.e., ZCC, ZPA).</p> <p>[ZCC.Patient First Name] is partially validated by PharmaNet. First character must match.</p> <p>[ZCC.Patient Last Name] is partially validated by PharmaNet. First two characters must match.</p> <p>Modifications for bc.pnet.r70 (do not use with bc.pnet.r03 development):</p> <ul style="list-style-type: none"> • Implementation of the PharmaNet Modernization Project allows Medication Management Issue (MMI) Codes and Clinical Service Codes to be submitted with a dispense and claim in a new optional message segment (ZPM) and recorded in PharmaNet as an extension of the Patient's Claim History. • This information is implicitly reversed by the reversal of the Claim History data when the parent claim is reversed. • The PharmaNet version 70 TAC reversal transaction provides functionality to reverse claims that have been created using both the PharmaNet version 70 and PharmaNet version 03 TAC record transactions. • This is necessary for the period immediately following a Pharmacy's implementation of the new version 70 message set when it is still necessary to reverse claims

Interaction ID	TACTDU_11_REQUEST
	created using the old version 03 message set.
Developer Guidance	<p>To reverse a PharmaNet version 70 claim the PharmaNet Prescription Identifier of the claim must be sent with the reversal request in order to locate the claim on the Claim History table.</p> <p>The submitted PharmaNet Prescription Identifier must match the claim that is to be reversed, else the transaction is rejected.</p> <p>To reverse a PharmaNet version 03 claim using the version 70 claim reversal server, the input message must contain the same input as defined by the Software Compliance for PharmaNet version 03 TAC Reversal and the PharmaNet Prescription Identifier must be zero.</p> <p>If the claim is found on the Claim History table the PharmaNet Prescription Identifier must be zero, else the transaction is rejected.</p> <p>PharmaNet requires only one ZCA segment.</p> <p>This rule is an exception to the usual protocol in which individual message types have a specific (and different) value for [ZCA.Transaction Code].</p> <p>The composite message contains only the transaction code value for the “primary” request, in this case the claim reversal.</p> <p>The Transaction code for the TDU is inferred from the contents of the ZZZ segments.</p> <p>The rules for Trace Number are the same for combination transactions.</p> <p>The message model below contains a number of logical segment groups.</p> <p>However, apart from MSH being the first, the segments can be sent in any order.</p>
Trigger Event	11 , 61
CPhA Version	03, 70

Interaction ID	TACTDU_11_REQUEST	
Message Model	MSH	Message Header
	{ ZZZ	Transaction Control (TAC)
	ZCA	CPhA Segment A - Message Destination, Purpose and Control Elements
	ZCB	CPhA Segment B - Provider Information
	ZCC	CPhA Segment C - Beneficiary Information
	ZCD	CPhA Segment D - Prescription and Professional Service Information
	ZCE	CPhA Segment E – Claim Response
	ZPJ	Claim Information
	}	End of segment group
	ZZZ	Transaction Control (TDU)

Table 12 TACTDU_61_RESPONSE

Interaction ID	TACTDU_61_RESPONSE
Interaction Business Name	Adjudicate a Dispense Claim Reversal TAC/TDU (61) - Output
Interaction Description	This is the response message.
Considerations	<p>Warning and error messages must be displayed and must comply with the mandatory display standards for the transaction.</p> <p>Test for any of the following:</p> <ul style="list-style-type: none"> • A response status field not equaling: <ul style="list-style-type: none"> ○ '0' for each ZZZ segment returned. ○ 'Y' for each ZCG segment returned. ○ 'Z' for each ZCH segment returned. • A transaction text field not equaling 'blanks' or 0 – Operation Successful' for each ZZZ segment returned. • A response status field in the ZCE segment (if returned) not equal to 'A' or 'V' and the response codes field in the ZCE segment (if returned) is not blank. <p>If a PHN has been merged the new PHN is returned in the [ZCC.Provincial Health Care ID] field in the response.</p>
Developer Guidance	<p>PharmaNet does not respond to a combined message request until it has gathered all the component message replies and has evaluated each one for success or failure.</p> <p>If one or more of the component messages is not successful then all component responses are set to be not successful and the response is constructed and returned to the client.</p> <p>The message model (below) contains a logical segment group.</p> <p>However, apart from MSH being the first, the <i>segments may be returned in any order</i> by PharmaNet.</p> <p>There is no message flag for a replacement PHN.</p> <p>Receiver must test for a different value in [ZCC.Provincial Health Care ID].</p>
Trigger Event	11 , 61

Interaction ID	TACTDU_61_RESPONSE	
CPhA Version	03, 70	
Message Model	MSH	Message Header
	{ZZZ	Transaction Control (TAC)
	[ZCA]	CPhA Segment A - Message Destination, Purpose and Control Elements
	ZCB	CPhA Segment B - Provider Information
	[ZCC]	CPhA Segment C - Beneficiary Information
	[ZCE]	CPhA Segment E – Claim Response
	}	End of segment group
	ZZZ	Transaction Control (TDU)

7.5 TCP (00/50) – Patient Keyword Maintenance

This transaction adds or updates the Patient protective word, but cannot remove it.

Message Interactions:

Table 13 TCP_00_REQUEST

Interaction ID	TCP_00_REQUEST
Interaction Business Name	[Patient Keyword Maintenance TCP (00) - Input]
Interaction Description	This is an inquiry request message.
Considerations	<p>MSH, ZZZ, ZCA, ZCB segments are required on all requests.</p> <p>Encryption will be used on existing segments that contain Patient identifiers (i.e., ZCC, ZPA).</p> <p>Message was NOT modified for CPhA '70'.</p> <p>In other words, this message is backward compatible with the release '03' message.</p> <p>PharmaNet currently supports the version '03' messages for legacy implementations.</p> <p>For new implementations note the coding requirement for the [ZCA.CPhA Version Number] field.</p> <p>The POS application must prevent the use of Health Level 7 (HL7) encoding characters (^ ~ \ &) in the keyword.</p> <p>The patient's protective word is added by submitting a Patient Keyword Maintenance – TCP (00) transaction.</p> <p>The Current Patient Keyword field will be blank and the keyword to be added must be entered in the New Patient Keyword field.</p> <p>If the PHN submitted on a TCP has been merged, the following message is returned:</p> <ul style="list-style-type: none"> • “42 This PHN has been collapsed. Please enter correct PHN.”
Developer Guidance	<p>Modifications for bc.pnet.r70:</p> <ul style="list-style-type: none"> • Message is unmodified from version 03 (1999), however, the CPhA version number was changed by PharmaNet to “70” as part of a larger release.

Interaction ID	TCP_00_REQUEST	
Trigger Event	00	
CPhA Version	03, 70	
Message Model	MSH	Message Header
	ZZZ	Transaction Control
	ZCA	CPhA Segment A - Claims Standard Header Message
	ZCB	CPhA Segment B - Provider Information
	ZCC	CPhA Segment C - Beneficiary Information

Table 14 TCP_50_RESPONSE

Interaction ID	TCP_50_RESPONSE
Interaction Business Name	[Patient Keyword Maintenance TCP (50) - Output]
Interaction Description	This is the response message
Considerations	<p>Warning and error messages must be displayed and must comply with the mandatory display standards for the transaction.</p> <p>Test for any of the following:</p> <ul style="list-style-type: none"> • A response status field not equaling: <ul style="list-style-type: none"> ○ '0' for each ZZZ segment returned. ○ 'Y' for each ZCG segment returned. ○ 'Z' for each ZCH segment returned. • A transaction text field not equaling 'blanks' or 0 – Operation Successful' for each ZZZ segment returned. • A response status field in the ZCE segment (if returned) not equal to 'A' or 'V' and the response codes field in the ZCE segment (if returned) is not blank. <p>If no data exists for the patient the transaction will return successfully, but applicable data segments will be absent from</p>

Interaction ID	TCP_50_RESPONSE	
	the returned message.	
Developer Guidance	<p>The ZCC segment is encrypted because it has patient identifiable information in them.</p> <p>Modifications for bc.pnet.r70:</p> <ul style="list-style-type: none"> • Message is unmodified from version 03 (1999), however, the CPhA version number was changed by PharmaNet to “70” as part of a larger release. 	
Trigger Event	50	
CPhA Version	03, 70	
Message Model	MSH	Message Header
	ZZZ	Transaction Control
	ZCB	CPhA Segment B - Provider Information
	ZCC	CPhA Segment C - Beneficiary Information
	{{ZPI}}	Fan-out

7.6 TDR (00/50) – Drug Monograph Information

The Drug Monograph Information request allows information to be requested about specific drugs based on the search criteria defined below.

The transaction response returns one match that satisfies the search criteria.

Along with the basic drug identification data, generic equivalents information, drug monographs, drug interaction monographs, and professional or patient education information can also be requested.

This transaction will access detailed information about a particular drug.

Message Interactions:

Table 15 TDR_00_REQUEST

Interaction ID	TDR_00_REQUEST
Interaction Business Name	[Drug Monograph Information TDR (00) - Input]
Interaction Description	This is an inquiry request message.
Considerations	<p>MSH, ZZZ, ZCA, ZCB segments are required on all requests.</p> <p>Encryption will be used on existing segments that contain Patient identifiers (i.e., ZCC, ZPA).</p> <p>There are 3 types of monographs that can be retrieved via the TDR.</p> <p>See ZPC.8.3 [Information Type] and the codes for “Information_Type” terminology.</p> <p>Drug monograph information may be retrieved by DIN, or brand name, dosage form, strength, and units.</p> <p>See field notes for ZPC segment.</p> <p>Depending on which drug monograph is required, the information may be retrieved in several ways:</p> <ul style="list-style-type: none"> • For a Drug Monograph the mandatory field is DIN (this is a recommended method of retrieval). • For a TDR request for Patient Information or Patient Counsel Drug Monograph the mandatory fields are: <ul style="list-style-type: none"> ○ DIN ○ Generic Equivalent

Interaction ID	TDR_00_REQUEST
	<p style="text-align: center;">○ Information Type</p> <p>Optional fields that can be used in the query with any of methods above are:</p> <ul style="list-style-type: none"> • Brand Name • Dosage Form • Strength and Units • Information Source <p>For any of the optional fields, they must match what is in PharmaNet exactly.</p> <p>To request an Adverse Drug Interaction Monograph between the two drugs, a second DIN field in the ZPC segment is added.</p> <p>Drug-to-drug interaction monographs may be retrieved by a single DIN or a pair of DINs along with [TDR.Information type] = “ADIMONOG” in the ZPC segment.</p> <p>If two DINs are used:</p> <ul style="list-style-type: none"> • The first DIN must be entered in the ZPC.2 “DIN/PIN” field. • Returns drug interaction monographs for all potential drug interactions involving the requested DIN along with the basic drug information and generic equivalents (if requested) • The second DIN must be entered in ZPC.9.4 “DIN/PIN” field, a component of the ZPC1 sub-segment. • Returns drug interaction monographs specific to potential drug interaction(s) between the requested DINs along with the basic drug information and generic equivalents (if requested) for the first DIN requested <p>The format of the two fields is identical.</p> <p>A single ADIMONOG request can result in more than one monograph; therefore, a ZPD3 segment containing repeating ‘*=' characters, is used to indicate the end of a monograph.</p> <p>The new DIN/PIN 2 field will not be returned in the ZPD2 segment.</p>

Interaction ID	TDR_00_REQUEST	
	<p>Modifications for bc.pnet.r70:</p> <ul style="list-style-type: none"> Message is unmodified from version 03 (1999), however, the CPhA version number was changed by PharmaNet to “70” as part of a larger release. <p>PharmaNet currently supports the version ‘03’ messages for legacy implementations.</p> <p>For new implementations note the coding requirement for the [ZCA.CPhA Version Number] field.</p>	
Developer Guidance		
Trigger Event	00	
CPhA Version	03, 70	
Message Model	MSH	Message Header
	ZZZ	Transaction Control
	ZCA	CPhA Segment A - Claims Standard Header Message
	ZCB	CPhA Segment B - Provider Information
	ZPC	Drug Information Request

Table 16 TDR_50_RESPONSE

Interaction ID	TDR_50_RESPONSE
Interaction Business Name	[Drug Monograph Information TDR (50) - Output]
Interaction Description	This is the response message
Considerations	<p>Warning and error messages must be displayed and must comply with the mandatory display standards for the transaction.</p> <p>Test for any of the following:</p> <ul style="list-style-type: none"> A response status field not equaling: <ul style="list-style-type: none"> ‘0’ for each ZZZ segment returned.

Interaction ID	TDR_50_RESPONSE
	<ul style="list-style-type: none"> ○ 'Y' for each ZCG segment returned. ○ 'Z' for each ZCH segment returned. ● A transaction text field not equaling 'blanks' or 0 – Operation Successful' for each ZZZ segment returned. ● A response status field in the ZCE segment (if returned) not equal to 'A' or 'V' and the response codes field in the ZCE segment (if returned) is not blank.
Developer Guidance	<p>Monographs are returned in repeating ZPD3 segments</p> <p>Details:</p> <p>Drug monograph information comes from FDB in textual form.</p> <p>In order to transmit this data as a response to a TDR request, PharmaNet uses the following process:</p> <ul style="list-style-type: none"> ● Read a line of data from the FDB file, terminate the line with ZPD3; ● If the line is blank, insert a ZPD3. <p>This means that if there is a blank line between two paragraphs, then there will be two ZPD3s adjacent to each other in the data stream.</p> <p>As well, only the number of characters in the field will be sent in the ZPD3 (i.e., if the data supplied has 25 characters, then the ZPD3 will contain only 25 characters and the next ZPD3 will follow).</p> <p>A single ADIMONOG request can result in more than one Monograph.</p> <p>A separator is used in between monographs to distinguish each.</p> <p>The combination of characters "*"=" are used in a ZPD3 segment, left justified and 76 bytes long, to delimit multiple returned monographs.</p> <p>It only appears when there is more than one monograph to be returned.</p> <p>Modifications for bc.PharmaNet.r70:</p> <ul style="list-style-type: none"> ● Message is unmodified from version 03 (1999),

Interaction ID	TDR_50_RESPONSE	
	however, the CPhA version number was changed by PharmaNet to “70” as part of a larger release.	
Trigger Event	50	
CPhA Version	03, 70	
Message Model	MSH	Message Header
	ZZZ	Transaction Control
	ZCB	CPhA Segment B - Provider Information
	[ZPD]	Drug Information Response
	{{ZPI}}	Fan-out

7.7 TDT (30/80) – Adjudication Reconciliation (Daily Totals Inquiry)

The Daily Totals transaction returns accumulated totals for number of claims, same day reversals and prior day reversals on a particular date.

The purpose of this function is to provide the totals of daily transaction activity to a pharmacy.

This allows a pharmacy to retrieve summary totals of their claims processing for a given day.

Pharmacies request these totals by providing their Location ID and the Adjudication Date for which totals are required, along with a BIN (Bank Identification Number) number for the adjudicator from whom the totals are being requested.

Pharmacies can only retrieve daily totals for transactions processed in the most recent 45 days.

Message Interactions:

Table 17 TDT_30_REQUEST

Interaction ID	TDT_30_REQUEST
Interaction Business Name	[Daily Totals Enquiry] [Accumulated Totals - TDT (30) - Input]
Interaction Description	This transaction requests the accumulated totals for specified adjudication date (for Carrier ID and Group # if indicated). (per ZCA.4)
Considerations	MSH, ZZZ, ZCA, ZCB segments are required on all requests. Encryption will be used on existing segments that contain Patient identifiers (i.e., ZCC, ZPA). Message is unchanged from version 03 (1999), however, the CPhA version number was changed by PharmaNet to “70” as part of a larger release. This function is performed through 2 processes: <ul style="list-style-type: none"> • Validate Totals Request Submission Data; • Retrieve Pharmacy Totals.
Developer Guidance	The Beginning of Record and End of Record fields refer to the selection of local prescription numbers that are to be returned in the response. The selection will be based on a local prescription number

Interaction ID	TDT_30_REQUEST
	<p>greater than the Beginning of Record local prescription number and less than or equal to the End of Record local prescription number.</p> <p>This is not an inclusive selection, but that the first Local Prescription Number returned is equal to the Beginning of Record plus 1.</p> <p>The following example demonstrates this:</p> <p>Input:</p> <p>Beginning of Record = 001001255</p> <p>End of Record = 001001262</p> <p>This input will result in the return of seven dispenses from 001001256 through 001001262.</p> <p>Regardless of the values entered in the Beginning and End of Record fields, the CPhA Standards state that detail records will be returned in groups with a maximum of fourteen (14) dispenses per transaction or all prescriptions for that day within that range, whichever occurs first.</p> <p>Additional dispenses may be processed by submitting more than one TDT transaction.</p> <p>This may be done by changing the Beginning of Record field to the last local prescription number already received and submitting the transaction again.</p> <p>This procedure may be repeated until dispense matching the End of Record field is returned.</p> <p>The first transaction with this input will return fourteen (14) dispenses, from 001001256 through 001001269.</p> <p>Changing the Beginning of Record field to 00100269 and submitting a second transaction will result in the remaining five (5) dispenses, 001001270 to 001001274, being returned.</p> <p>Modifications for bc.PharmaNet.r70:</p> <p>Message is unmodified from version 03 (1999), however, the CPhA version number was changed by PharmaNet to “70” as part of a larger release.</p>
Trigger Event	30

Interaction ID	TDT_30_REQUEST	
CPhA Version	03, 70	
Message Model	MSH	Message Header
	ZZZ	Transaction Control
	ZCA	CPhA Segment A - Claims Standard Header Message
	ZCB	CPhA Segment B - Provider Information
	ZCC	Beneficiary Information
	ZCF	Request For Totals and Detail Records

Table 18 TDT_80_RESPONSE

Interaction ID	TDT_80_RESPONSE
Interaction Business Name	[Daily Totals Enquiry] [Accumulated Totals - TDT (80) - Output]
Interaction Description	Response to a transaction requesting the accumulated totals for a specified adjudication date. (Per ZCA.4)
Considerations	<p>Warning and error messages must be displayed and must comply with the mandatory display standards for the transaction.</p> <p>Test for any of the following:</p> <ul style="list-style-type: none"> • A response status field not equaling: <ul style="list-style-type: none"> ○ '0' for each ZZZ segment returned. ○ 'Y' for each ZCG segment returned. ○ 'Z' for each ZCH segment returned. • A transaction text field not equaling 'blanks' or 0 – Operation Successful' for each ZZZ segment returned. • A response status field in the ZCE segment (if returned) not equal to 'A' or 'V' and the response codes field in the ZCE segment (if returned) is not

Interaction ID	TDT_80_RESPONSE	
	blank. Modifications for bc.PharmaNet.r70: <ul style="list-style-type: none"> • Message is unmodified from version 03 (1999), however, the CPhA version number was changed by PharmaNet to “70” as part of a larger release. 	
Developer Guidance		
Trigger Event	80	
CPhA Version	03, 70	
Message Model	MSH	Message Header
	ZZZ	Transaction Control
	ZCA	CPhA Segment A - Claims Standard Header Message
	ZCB	CPhA Segment B - Provider Information
	ZCG	Daily Totals Response Elements

7.8 TDT (31/81) – Adjudication Reconciliation (Claim Details)

Claim Details provides a list of claims processed for a particular day as well as the amount paid by PharmaCare for each of them.

[See also, formal Transaction Code description]

These functions (CPhA Detail Claim records request - '31', '32', '33') allow a pharmacy to receive details (Rx #, Paid Amount, etc.) for up to 14 claims, same-day reversals, or prior dated reversed claims.

These types of transactions are utilized when the totals of a CPhA '30' transaction do not agree with the pharmacy's totals and further reconciliation must be done.

The transaction request contains the Location ID, Transaction Date of the claim, and the beginning/ending Rx # requested.

The transaction will be validated with the same criteria as a CPhA transaction '30'.

Message Interactions:

Table 19 TDT_31_REQUEST

Interaction ID	TDT_31_REQUEST
Interaction Business Name	[Accepted Claims] [Claims Details - TDT (31) - Input]
Interaction Description	Transaction requesting a detailed record of Pharmacare claims, for up to 14 consecutive claim transactions, on a specified adjudication date (for Carrier ID and Group # if indicated). (per ZCA.4)
Considerations	MSH, ZZZ, ZCA, ZCB segments are required on all requests. Encryption will be used on existing segments that contain Patient identifiers (i.e., ZCC, ZPA).
Developer Guidance	The [ZCF.Beginning of Record] and [ZCF.End of Record] fields refer to the selection of local prescription numbers that are to be returned in the response. The selection will be based on a local prescription number greater than the Beginning of Record local prescription number and less than or equal to the End of Record local

Interaction ID	TDT_31_REQUEST
	<p>prescription number.</p> <p>This is not an inclusive selection.</p> <p>The first Local Prescription Number returned will be the Beginning of Record plus 1.</p> <p>The following example demonstrates this:</p> <p>Input:</p> <ul style="list-style-type: none"> • Beginning of Record = 001001255 • End of Record = 001001262 <p>This input will result in the return of seven dispenses from 001001256 through 001001262.</p> <p>Regardless of the values entered in the Beginning and End of Record fields, the records will be returned in groups, with a maximum of fourteen (14) dispenses per transaction or all prescriptions for that day within that range, whichever occurs first.</p> <p>This is according to the CPhA Standard.</p> <p>Example Input:</p> <ul style="list-style-type: none"> • Beginning of Record = 001001255 • End of Record = 001001274 <p>More than 14 dispenses can be processed by submitting more than one TDT transaction.</p> <p>This is done by changing the Beginning of Record field to the last local prescription number already received and submitting the transaction again.</p> <p>This procedure is repeated until dispense matching the End of Record field is returned.</p> <p>The first transaction in this example will return fourteen (14) dispenses, from 001001256 through 001001269.</p> <p>Changing the Beginning of Record field to 00100269 and submitting a second transaction will result in the remaining five (5) dispenses, 001001270 to 001001274, being returned.</p> <p>Modifications for bc.PharmaNet.r70:</p> <p>Message is unmodified from version 03 (1999), however, the CPhA version number was changed by PharmaNet to “70” as</p>

Interaction ID	TDT_31_REQUEST	
	part of a larger release.	
Trigger Event	31	
CPhA Version	03, 70	
Message Model	MSH	Message Header
	ZZZ	Transaction Control
	ZCA	CPhA Segment A - Claims Standard Header Message
	ZCB	CPhA Segment B - Provider Information
	ZCC	Beneficiary Information
	ZCF	Request For Totals and Detail Records

Table 20 TDT_81_RESPONSE

Interaction ID	TDT_81_RESPONSE
Interaction Business Name	[Accepted Claims] [Claims Details - TDT (81) - Output]
Interaction Description	Record of Accepted Pharmacare claims. (Per ZCA.4)
Considerations	<p>Warning and error messages must be displayed and must comply with the mandatory display standards for the transaction.</p> <p>Test for any of the following:</p> <ul style="list-style-type: none"> • A response status field not equaling: <ul style="list-style-type: none"> ○ '0' for each ZZZ segment returned. ○ 'Y' for each ZCG segment returned. ○ 'Z' for each ZCH segment returned. • A transaction text field not equaling 'blanks' or 0 – Operation Successful' for each ZZZ segment returned. • A response status field in the ZCE segment (if

Interaction ID	TDT_81_RESPONSE	
	<p>returned) not equal to 'A' or 'V' and the response codes field in the ZCE segment (if returned) is not blank.</p> <p>(CIS) Message is unchanged from version 03 (1999), however, the CPhA version number was changed by PharmaNet to "70" as part of a larger release.</p>	
Developer Guidance	<p>(CPhA) Detailed records will be presented in a time of day sequence.</p> <p>Modifications for bc.PharmaNet.r70:</p> <p>Message is unmodified from version 03 (1999), however, the CPhA version number was changed by PharmaNet to "70" as part of a larger release.</p>	
Trigger Event	81	
CPhA Version	03, 70	
Message Model	MSH	Message Header
	ZZZ	Transaction Control
	ZCA	CPhA Segment A - Claims Standard Header Message
	ZCB	CPhA Segment B - Provider Information
	ZCG	Daily Totals Response Elements

7.9 TDT (32/82) – Adjudication Reconciliation (Same Day Reversals)

Same Day Reversals provides a list of claims that were reversed on the same day for a particular day, as well as the dollar amount of each reversed claim.

See the formal Transaction Code description in the BC PharmaNet Terminology Worksheet.

Message Interactions:

Table 21 TDT_32_REQUEST

Interaction ID	TDT_32_REQUEST
Interaction Business Name	[Same Day Reversals] [Same Day Reversals - TDT (32) - Input]
Interaction Description	Transaction requesting a detailed record of prior reversals, for up to 14 consecutive reversals, of Pharmacare claims processed on a specified adjudication date (for Carrier Id and Group # if indicated). (per ZCA.4)
Considerations	MSH, ZZZ, ZCA, ZCB segments are required on all requests. Encryption will be used on existing segments that contain Patient identifiers (i.e., ZCC, ZPA).
Developer Guidance	<p>The [ZCF.Beginning of Record] and [ZCF.End of Record] fields refer to the selection of local prescription numbers that are to be returned in the response.</p> <p>The selection will be based on a local prescription number greater than the Beginning of Record local prescription number and less than or equal to the End of Record local prescription number.</p> <p>This is not an inclusive selection.</p> <p>The first Local Prescription Number returned will be the Beginning of Record plus 1.</p> <p>The following example demonstrates this:</p> <p>Input:</p> <ul style="list-style-type: none"> • Beginning of Record = 001001255 • End of Record = 001001262

Interaction ID	TDT_32_REQUEST	
	<p>This input will result in the return of seven dispenses from 001001256 through 001001262.</p> <p>Regardless of the values entered in the Beginning and End of Record fields, the records will be returned in groups, with a maximum of fourteen (14) dispenses per transaction or all prescriptions for that day within that range, whichever occurs first.</p> <p>This is according to the CPhA Standard.</p> <p>Example Input:</p> <ul style="list-style-type: none"> • Beginning of Record = 001001255 • End of Record = 001001274 <p>More than 14 dispenses can be processed by submitting more than one TDT transaction.</p> <p>This is done by changing the Beginning of Record field to the last local prescription number already received and submitting the transaction again.</p> <p>This procedure is repeated until dispense matching the End of Record field is returned.</p> <p>The first transaction in this example will return fourteen (14) dispenses, from 001001256 through 001001269.</p> <p>Changing the Beginning of Record field to 00100269 and submitting a second transaction will result in the remaining five (5) dispenses, 001001270 to 001001274, being returned.</p> <p>Modifications for bc.pnet.r70:</p> <p>Message is unmodified from version 03 (1999), however, the CPhA version number was changed by PharmaNet to “70” as part of a larger release.</p>	
Trigger Event	32	
CPhA Version	03, 70	
Message Model	MSH	Message Header
	ZZZ	Transaction Control
	ZCA	CPhA Segment A - Claims Standard Header Message

Interaction ID	TDT_32_REQUEST	
	ZCB	CPhA Segment B - Provider Information
	ZCC	Beneficiary Information
	ZCF	Request For Totals and Detail Records

Table 22 TDT_82_RESPONSE

Interaction ID	TDT_82_RESPONSE
Interaction Business Name	[Same Day Reversals] [Same Day Reversals - TDT (82) - Output]
Interaction Description	Response to a request for a detailed record of reversals of same date claims. (Per ZCA.4)
Considerations	<p>Warning and error messages must be displayed and must comply with the mandatory display standards for the transaction.</p> <p>Test for any of the following:</p> <ul style="list-style-type: none"> • A response status field not equaling: <ul style="list-style-type: none"> ○ '0' for each ZZZ segment returned. ○ 'Y' for each ZCG segment returned. ○ 'Z' for each ZCH segment returned. • A transaction text field not equaling 'blanks' or 0 – Operation Successful' for each ZZZ segment returned. • A response status field in the ZCE segment (if returned) not equal to 'A' or 'V' and the response codes field in the ZCE segment (if returned) is not blank. <p>Modifications for bc.pnet.r70:</p> <ul style="list-style-type: none"> • Message is unmodified from version 03 (1999), however, the CPhA version number was changed by PharmaNet to "70" as part of a larger release.
Developer Guidance	(CPhA) Detailed records will be presented in a time of day

Interaction ID	TDT_82_RESPONSE	
	sequence.	
Trigger Event	82	
CPhA Version	03, 70	
Message Model	MSH	Message Header
	ZZZ	Transaction Control
	ZCA	CPhA Segment A - Claims Standard Header Message
	ZCB	CPhA Segment B - Provider Information
	ZCG	Daily Totals Response Elements

7.10 TDT (33/83) – Adjudication Reconciliation (Prior Day Reversals)

Prior Day Reversals provides a list of claims that were reversed from a previous day, as well as the dollar amount of each reversed claim.

See the formal Transaction Code description in the BC PharmaNet Terminology Worksheet.

Message Interactions:

Table 23 TDT_33_REQUEST

Interaction ID	TDT_33_REQUEST
Interaction Business Name	[Prior Day Reversals] [Prior Reversals - TDT (33) - Input]
Interaction Description	Transaction requesting a detailed record of prior reversals, for up to 14 consecutive reversals, of claims processed prior to the adjudication date specified in this request (for Carrier ID and Group # if indicated). (per ZCA.4)
Considerations	MSH, ZZZ, ZCA, ZCB segments are required on all requests. Encryption will be used on existing segments that contain Patient identifiers (i.e., ZCC, ZPA).
Developer Guidance	<p>The [ZCF.Beginning of Record] and [ZCF.End of Record] fields refer to the selection of local prescription numbers that are to be returned in the response.</p> <p>The selection will be based on a local prescription number greater than the Beginning of Record local prescription number and less than or equal to the End of Record local prescription number.</p> <p>This is not an inclusive selection.</p> <p>The first Local Prescription Number returned will be the Beginning of Record plus 1.</p> <p>The following example demonstrates this:</p> <p>Input:</p> <ul style="list-style-type: none"> • Beginning of Record = 001001255 • End of Record = 001001262

Interaction ID	TDT_33_REQUEST	
	<p>This input will result in the return of seven dispenses from 001001256 through 001001262.</p> <p>Regardless of the values entered in the Beginning and End of Record fields, the records will be returned in groups, with a maximum of fourteen (14) dispenses per transaction or all prescriptions for that day within that range, whichever occurs first.</p> <p>This is according to the CPhA Standard.</p> <p>Example Input:</p> <ul style="list-style-type: none"> • Beginning of Record = 001001255 • End of Record = 001001274 <p>More than 14 dispenses can be processed by submitting more than one TDT transaction.</p> <p>This is done by changing the Beginning of Record field to the last local prescription number already received and submitting the transaction again.</p> <p>This procedure is repeated until dispense matching the End of Record field is returned.</p> <p>The first transaction in this example will return fourteen (14) dispenses, from 001001256 through 001001269.</p> <p>Changing the Beginning of Record field to 00100269 and submitting a second transaction will result in the remaining five (5) dispenses, 001001270 to 001001274, being returned.</p> <p>Modifications for bc.pnet.r70:</p> <p>Message is unmodified from version 03 (1999), however, the CPhA version number was changed by PharmaNet to “70” as part of a larger release.</p>	
Trigger Event	33	
CPhA Version	03, 70	
Message Model	MSH	Message Header
	ZZZ	Transaction Control
	ZCA	CPhA Segment A - Claims Standard Header Message

Interaction ID	TDT_33_REQUEST	
	ZCB	CPhA Segment B - Provider Information
	ZCC	Beneficiary Information
	ZCF	Request For Totals and Detail Records

Table 24 TDT_83_RESPONSE

Interaction ID	TDT_83_RESPONSE
Interaction Business Name	[Prior Day Reversals] [Prior Reversals - TDT (83) - Output]
Interaction Description	Response to a request for a detailed record of prior date claims. (Per ZCA.4)
Considerations	<p>Warning and error messages must be displayed and must comply with the mandatory display standards for the transaction.</p> <p>Test for any of the following:</p> <ul style="list-style-type: none"> • A response status field not equaling: <ul style="list-style-type: none"> ○ '0' for each ZZZ segment returned. ○ 'Y' for each ZCG segment returned. ○ 'Z' for each ZCH segment returned. • A transaction text field not equaling 'blanks' or 0 – Operation Successful' for each ZZZ segment returned. • A response status field in the ZCE segment (if returned) not equal to 'A' or 'V' and the response codes field in the ZCE segment (if returned) is not blank. <p>Message is unchanged from version 03 (1999), however, the CPhA version number was changed by PharmaNet to "70" as part of a larger release.</p>
Developer Guidance	(CPhA) Detailed records will be presented in a time of day sequence.

Interaction ID	TDT_83_RESPONSE	
	Modifications for bc.pnet.r70: <ul style="list-style-type: none"> Message is unmodified from version 03 (1999), however, the CPhA version number was changed by PharmaNet to “70” as part of a larger release. 	
Trigger Event	83	
CPhA Version	03, 70	
Message Model	MSH	Message Header
	ZZZ	Transaction Control
	ZCA	CPhA Segment A - Claims Standard Header Message
	ZCB	CPhA Segment B - Provider Information
	ZCG	Daily Totals Response Elements

7.11 TDU (00/50) – Drug Utilization Evaluation

The TDU inquiry transaction is used by a provider to perform drug use evaluation checking of a medication prior to recording a dispense.

Message Interactions:

Table 25 TDU_00_REQUEST

Interaction ID	TDU_00_REQUEST
Interaction Business Name	[Drug Utilization Evaluation - TID (00) - Input]
Interaction Description	<p>This is a synchronous transaction.</p> <p>This is a combination message that can optionally include two concurrent requests.</p>
Considerations	<p>TDU can be combined with a query request for a TRP, TRR or TRS profile.</p> <p>(One only, per message instance).</p> <p>The Too Soon Too Late DUE check will not be performed for the DUE inquiry (TDU 00/50) transaction.</p>
Developer Guidance	<p>The request message can contain two distinct server requests: a TDU request and, optionally, one of three possible Profile requests.</p> <p>Each request is identified by a separate ZZZ segment in the message.</p> <p>See requirements for the individual Profile requests, which are the same in this combined message.</p> <p>PharmaNet requires only one ZCA segment for combination messages.</p> <p>This rule is an exception to the usual protocol in which individual message types have a specific (and different) value for [ZCA.Transaction Code].</p> <p>The composite message contains only the transaction code value for the “primary” request, in this case the TDU.</p> <p>The Transaction code for the profile request is inferred from the contents of the ZZZ segment.</p> <p>The rules for Trace Number are the same for combination</p>

Interaction ID	TDU_00_REQUEST	
	<p>transactions.</p> <p>The message model below contains several logical segment groups.</p> <p>However, apart from MSH being the first, the segments can be sent in any order.</p> <p>For the ZPJ segment three ZPJ2 sub-segments are required.</p>	
Trigger Event	00 (00)	
CPhA Version	03, 70	
Message Model	MSH	Message Header
	{	TDU Request
	ZZZ	Transaction Control (TDU)
	ZCA	CPhA Segment A - Claims Standard Header Message
	ZCB	CPhA Segment B - Provider Information
	ZCC	Beneficiary Information
	ZCD	Prescription and Professional Service Information
	ZPJ	Claim Information
	}	End of segment group
	[ZZZ]	Transaction Control (TRP, TRR or TRS)

Table 26 TDU_50_RESPONSE

Interaction ID	TDU_50_RESPONSE										
Interaction Business Name	[Drug Utilization Evaluation - TID (50) - Output]										
Interaction Description	This is the response message.										
Considerations	If a PHN has been merged the new PHN is returned in the [ZCC.Provincial Health Care ID] field in the response.										
Developer Guidance	<p>ZPE segment is returned only when there is a DUE interaction.</p> <p>ZPE has two, paired ZPB3 sub-segments – [ZPE.7.RX Information Block 1] and [ZPE.8.RX Information Block 2].</p> <ul style="list-style-type: none"> Block 1 contains the drug being enquired about from the TDU request. And Block 2 contains a single drug from the patient’s medication history for which a DUE assessment is being returned. <p>Multiple ZPE segments to a maximum of 28 may be returned, (thus 28 comparisons).</p> <p>ZPI segment is returned only when a fan-out message exists.</p> <p>The Prescriber Last Name Edit and Prescriber Restriction Checking are not performed for the TDU inquiry transaction.</p> <p>Order of DUE Messages:</p> <p>The DUE messages (in [ZPE] segment) must be displayed in the order returned by PharmaNet.</p> <p>The order is as follows:</p> <table border="1" data-bbox="561 1446 1187 1776"> <tbody> <tr> <td>Drug To Drug Interactions</td> <td>up to 10 encounters</td> </tr> <tr> <td>Drug to Prior Adverse Reactions</td> <td>up to 5 encounters</td> </tr> <tr> <td>Min/Max Dosages</td> <td>up to 1 encounter</td> </tr> <tr> <td>Duplicate Ingredient/Therapy</td> <td>up to 10 encounters</td> </tr> <tr> <td>T00 S00n/T00 Late (Compliance)</td> <td>up to 1 encounter</td> </tr> </tbody> </table> <p>There is no message flag for a replacement PHN.</p> <p>Receiver must test for a different value in [ZCC.Provincial Health</p>	Drug To Drug Interactions	up to 10 encounters	Drug to Prior Adverse Reactions	up to 5 encounters	Min/Max Dosages	up to 1 encounter	Duplicate Ingredient/Therapy	up to 10 encounters	T00 S00n/T00 Late (Compliance)	up to 1 encounter
Drug To Drug Interactions	up to 10 encounters										
Drug to Prior Adverse Reactions	up to 5 encounters										
Min/Max Dosages	up to 1 encounter										
Duplicate Ingredient/Therapy	up to 10 encounters										
T00 S00n/T00 Late (Compliance)	up to 1 encounter										

Interaction ID	TDU_50_RESPONSE	
	<p>Care ID].</p> <p>PharmaNet does not respond to a combination message request until it has gathered all the component message replies and has evaluated each one for success or failure.</p> <p>If one or more of the component messages is not successful, then all component responses are set to be not successful and the response is constructed and returned to the client.</p> <p>The message model (below) contains several logical segment groups.</p> <p>However, apart from MSH being the first, the segments may be returned in any order by PharmaNet.</p> <p>Interaction Advisory Text description is composed of:</p> <ul style="list-style-type: none"> • maximum of 60 characters; • a field terminating character (":"); • 2 three-byte clinical effect codes separated by a delimiter (space), a terminating character (":"); and • up to 6 distinct one-byte Drug-Drug Interaction Reference Category Indicators to a maximum of 80 characters. 	
Trigger Event	50 (00)	
CPhA Version	70	
Message Model	MSH	Message Header
	{	TDU Response group
	ZZZ	Transaction Control
	ZCA	CPhA Segment A - Claims Standard Header Message
	ZCB	CPhA Segment B - Provider Information
	ZCC	Beneficiary Information
	[ZPE]	DUE Response

Interaction ID	TDU_50_RESPONSE	
	}	End of segment group
	[Profile Query Response group
	ZZZ	Transaction Control (TRP, TRR or TRS)
	ZPB	Patient History Response
]	End of segment group
	{ZPI}	Fan-out

7.12 TID (00/50) – Patient Identification

This transaction will return a PharmaNet patient record using the patient’s PHN.

The purpose of this transaction is to lookup patient demographic information on the PharmaCare Network System when the PHN is known.

This transaction does not perform any lookups against the Client Registry database.

Points of Service integrated with the Client Registry do no use this transaction.

This transaction is used to confirm a patient’s identity or to verify that a patient's address and telephone number is up-to-date.

Message Interactions:

Table 27 TID_00_REQUEST

Interaction ID	TID_00_REQUEST
Interaction Business Name	[Patient Identification - TID (00) - Input]
Interaction Description	This is an inquiry request message.
Considerations	<p>MSH, ZZZ, ZCA, ZCB segments are required on all requests.</p> <p>Encryption will be used on existing segments that contain Patient identifiers (i.e., ZCC, ZPA).</p> <p>This message was NOT modified for CPhA ‘70’ and is still backward compatible with the release ‘03’ message.</p> <p>PharmaNet currently supports the version ‘03’ messages for legacy implementations.</p> <p>For new implementations note the coding requirement for the [ZCA.CPhA Version Number] field.</p>
Developer Guidance	<p>Modifications for bc.pnet.r70:</p> <p>Message is unmodified from version 03 (1999), however, the CPhA version number was changed by PharmaNet to “70” as part of a larger release.</p>
Trigger Event	00
CPhA Version	03, 70

Interaction ID	TID_00_REQUEST	
Message Model	MSH	Message Header
	ZZZ	Transaction Control
	ZCA	CPhA Segment A - Claims Standard Header Message
	ZCB	CPhA Segment B - Provider Information
	ZCC	Beneficiary Information

Table 28 TID_50_RESPONSE

Interaction ID	TID_50_RESPONSE
Interaction Business Name	Patient Identification - TID (50) - Output]
Interaction Description	This is the response message
Considerations	<p>Warning and error messages must be displayed and must comply with the mandatory display standards for the transaction.</p> <p>Test for any of the following:</p> <ul style="list-style-type: none"> • A response status field not equaling: <ul style="list-style-type: none"> ○ '0' for each ZZZ segment returned. ○ 'Y' for each ZCG segment returned. ○ 'Z' for each ZCH segment returned. • A transaction text field not equaling 'blanks' or 0 – Operation Successful' for each ZZZ segment returned. • A response status field in the ZCE segment (if returned) not equal to 'A' or 'V' and the response codes field in the ZCE segment (if returned) is not blank. <p>If no data exists for the patient the transaction will return successfully, but applicable data segments will be absent from the returned message.</p> <p>If a PHN has been merged the new PHN is returned in the [ZCC.Provincial Health Care ID] field in the response.</p>

Interaction ID	TID_50_RESPONSE	
Developer Guidance	<p>Modifications for bc.pnet.r70:</p> <p>Message is unmodified from version 03 (1999), however, the CPhA version number was changed by PharmaNet to “70” as part of a larger release.</p> <p>There is no message flag for a replacement PHN.</p> <p>Receiver must test for a different value in [ZCC.Provincial Health Care ID].</p>	
Trigger Event	50	
CPhA Version	03, 70	
Message Model	MSH	Message Header
	ZZZ	Transaction Control
	ZCB	CPhA Segment B - Provider Information
	ZCC	Beneficiary Information
	ZPA	Patient Information
	{[ZPI]}	Fan-out

7.13 TIL (00/50) – Get Location Details

This transaction allows the user to retrieve the name, address, and telephone number for a specified POS Location ID from PharmaNet.

The TIL transaction only works in conjunction with the TRP v70 transaction.

Message Interactions:

Table 29 TIL_00_REQUEST

Interaction ID	TIL_00_REQUEST	
Interaction Business Name	Get Location Details - TIL_00 - Input	
Interaction Description	This is an inquiry request message.	
Considerations	MSH, ZZZ, ZCA, ZCB segments are required on all requests. Encryption will be used on existing segments that contain Patient identifiers (i.e., ZCC, ZPA).	
Developer Guidance		
Trigger Event		
CPhA Version	70	
Message Model	MSH	Message Header
	ZZZ	Transaction Control (TDU)
	ZCA	CPhA Segment A - Message Destination, Purpose and Control Elements
	ZCB	CPhA Segment B - Provider Information
	ZPL	Location Information

Table 30 TIL_51_RESPONSE

Interaction ID	TIL_51_RESPONSE	
Interaction Business Name	Get Location Details - TIL_50 - Output	
Interaction Description	This is the response message	
Considerations	<p>Warning and error messages must be displayed and must comply with the mandatory display standards for the transaction.</p> <p>Test for any of the following:</p> <ul style="list-style-type: none"> • A response status field not equaling: <ul style="list-style-type: none"> ○ '0' for each ZZZ segment returned. ○ 'Y' for each ZCG segment returned. ○ 'Z' for each ZCH segment returned. • A transaction text field not equaling 'blanks' or 0 – Operation Successful' for each ZZZ segment returned. • A response status field in the ZCE segment (if returned) not equal to 'A' or 'V' and the response codes field in the ZCE segment (if returned) is not blank. 	
Developer Guidance	The ZPL segment is only returned when there are no errors.	
Trigger Event		
CPhA Version	70	
Message Model	MSH	Message Header
	ZZZ	Transaction Control (TDU)
	ZCB	CPhA Segment B - Provider Information
	[ZPL]	Location Information
	[ZPI]	Fan-out

7.14 TIP (00/50) – Prescriber Identification

This function may be used to obtain information on a provider (e.g., physician, pharmacist, dentist or veterinarian) by either searching a name or by the unique identification number assigned by the appropriate regulatory body.

Message Interactions:

Table 31 TIP_00_REQUEST

Interaction ID	TIP_00_REQUEST
Interaction Business Name	[Prescriber Identification - TIP (00) - Input]
Interaction Description	This is an inquiry request message.
Considerations	<p>MSH, ZZZ, ZCA, ZCB segments are required on all requests.</p> <p>Encryption will be used on existing segments that contain Patient identifiers (i.e., ZCC, ZPA).</p> <p>MSP billing numbers are not used to identify prescribers anywhere in PharmaNet.</p>
Developer Guidance	<p>To retrieve practitioner demographics and practice information the following combinations must be used:</p> <ul style="list-style-type: none"> • practitioner ID number and Reference ID or • Family name and optionally, the first characters or all characters of the first name. <p>If a unique match is found, the response will be the prescriber record.</p> <p>If a unique match is not found, a list (maximum of 100) in alphabetical order by first name of practitioners matching the search criteria will be returned.</p> <p>If more than 100 matches are found, none will be returned.</p> <p>The transaction Segment Count will be 100 and the following message will be returned '106 Selection criteria chosen resulted in t00 many matches'.</p> <p>If less than or equal to 100 matches are found, the number of matches will be returned in the Transaction Segment Count of the ZZZ.</p> <p>Modifications for bc.pnet.r70:</p>

Interaction ID	TIP_00_REQUEST	
	<p>Message is unmodified from version 03 (1999), however, the CPhA version number was changed by PharmaNet to “70” as part of a larger release.</p> <p>ZPH segment: provider addresses, as they appear in ZPH, are based upon the Canada Post Standard.</p>	
Trigger Event	00	
CPhA Version	03, 70	
Message Model	MSH	Message Header
	ZZZ	Transaction Control
	ZCA	CPhA Segment A - Message Destination, Purpose and Control Elements
	ZCB	CPhA Segment B - Provider Information
	ZPH	Prescriber Information

Table 32 TIP_50_RESPONSE

Interaction ID	TIP_50_RESPONSE
Interaction Business Name	[Prescriber Identification - TIP (50) - Output]
Interaction Description	This is the response message.
Considerations	<p>Warning and error messages must be displayed and must comply with the mandatory display standards for the transaction.</p> <p>Test for any of the following:</p> <ul style="list-style-type: none"> • A response status field not equaling: <ul style="list-style-type: none"> ○ ‘0’ for each ZZZ segment returned. ○ ‘Y’ for each ZCG segment returned. ○ ‘Z’ for each ZCH segment returned. • A transaction text field not equaling ‘blanks’ or 0 – Operation Successful’ for each ZZZ segment returned.

Interaction ID	TIP_50_RESPONSE	
	<ul style="list-style-type: none"> A response status field in the ZCE segment (if returned) not equal to 'A' or 'V' and the response codes field in the ZCE segment (if returned) is not blank. 	
Developer Guidance	<p><markup rules for addresses></p> <p>ZPH segment: provider addresses, as they appear in ZPH, are based upon the Canada Post Standard.</p>	
Trigger Event	50	
CPhA Version	03, 70	
Message Model	MSH	Message Header
	ZZZ	Transaction Control
	ZCB	CPhA Segment B - Provider Information
	ZPH	Prescriber Information
	[ZPI]	Fan-out

7.15 TMU (01/51) – Medication Update

This transaction is used to update a PharmaNet medication profile with the dispense of a sample medication or any dispense of medication that the practitioner sees pertinent to the patient’s medical history.

Message Interactions:

Table 33 TMU_01_REQUEST

Interaction ID	TMU_01_REQUEST
Interaction Business Name	[Medication Update - TMU (01) - Input]
Interaction Description	This is an inquiry request message.
Considerations	<p>MSH, ZZZ, ZCA, ZCB segments are required on all requests.</p> <p>Encryption will be used on existing segments that contain Patient identifiers (i.e., ZCC, ZPA).</p> <p>The 10-byte Prescriber ID in the ZCD segment in a TMU transaction must contain the 5-byte prescriber licence number followed by the first 5-bytes of the prescriber’s last name.</p> <p>The Prescriber ID must be the prescriber’s licence number, not the MSP number.</p> <p>The edit matches the prescriber name on the ZCD segment with PharmaNet’s prescriber name.</p> <p>If the match is not successful, the prescription is rejected with a response code of ‘PB no match to Prescriber ID and name found’.</p> <p>The TMU specification was modified for bc.pnet.r70.</p>
Developer Guidance	<p>A failed TMU can be retransmitted.</p> <p>All the sub-segments of the ZPJ segment are required even though there may not be values in all of the fields.</p> <p>The directions field of ZPJ4 is required.</p> <p>The system will return an error if this field is not populated.</p> <p>Even though the fields of the ZPJ2 sub-segment may not be populated, the sub-segment must repeat three times, or it will not pass conformance checks in the PharmaNet applications.</p>

Interaction ID	TMU_01_REQUEST	
Trigger Event	01	
CPhA Version	03, 70	
Message Model	MSH	Message Header
	ZZZ	Transaction Control
	ZCA	CPhA Segment A - Message Destination, Purpose and Control Elements
	ZCB	CPhA Segment B - Provider Information
	ZCC	Beneficiary Information
	ZCD	Prescription and Professional Service Information
	ZPJ	Claim Information
	[ZPM]	MMI and Clinical Services Information

Table 34 TMU_51_RESPONSE

Interaction ID	TMU_51_RESPONSE
Interaction Business Name	[Medication Update - TMU (51) - Output]
Interaction Description	This is the response message.
Considerations	<p>Warning and error messages must be displayed and must comply with the mandatory display standards for the transaction.</p> <p>Test for any of the following:</p> <ul style="list-style-type: none"> • A response status field not equaling: <ul style="list-style-type: none"> ○ '0' for each ZZZ segment returned. ○ 'Y' for each ZCG segment returned. ○ 'Z' for each ZCH segment returned. • A transaction text field not equaling 'blanks' or 0 – Operation Successful' for each ZZZ segment returned.

Interaction ID	TMU_51_RESPONSE	
	<ul style="list-style-type: none"> • A response status field in the ZCE segment (if returned) not equal to 'A' or 'V' and the response codes field in the ZCE segment (if returned) is not blank. <p>Order of Returned DUE Messages</p> <p>The DUE messages returned from PharmaNet must be displayed in the order returned.</p> <p>The order is:</p> <ul style="list-style-type: none"> • Drug to Drug Interactions - up to 10 encounters • Drug to Prior Adverse Reactions - up to 5 encounters • Min/Max Dosages - up to 1 encounter • Duplicate Ingredient/Therapy - up to 10 encounters • Too Soon/Too Late (Compliance) - up to 1 encounter <p>If a PHN has been merged the new PHN is returned in the [ZCC.Provincial Health Care ID] field in the response.</p>	
Developer Guidance	<p>Prescription details for DUE responses are returned in reverse chronological order by expiry date.</p> <p>PharmaNet calculates the expiry date by adding the days supply to the Dispensing Date.</p> <p>There is no message flag for a replacement PHN.</p> <p>Receiver must test for a different value in [ZCC.Provincial Health Care ID].</p>	
Trigger Event	51	
CPhA Version	03, 70	
Message Model	MSH	Message Header
	ZZZ	Transaction Control
	ZCB	CPhA Segment B - Provider Information
	ZCC	Beneficiary Information
	{[ZPE]}	DUE Response

Interaction ID	TMU_51_RESPONSE	
	{{ ZPI }}	Fan-Out

7.16 TMU (11/61) – Medication Update Reversal

This transaction is used to correct a medication update made in error.

Message Interactions:

Table 35 TMU_11_REQUEST

Interaction ID	TMU_11_REQUEST	
Interaction Business Name	[Medication Update Reversal - TMU (11) - Input]	
Interaction Description	This is an inquiry request message.	
Considerations	<p>MSH, ZZZ, ZCA, ZCB segments are required on all requests.</p> <p>Encryption will be used on existing segments that contain Patient identifiers (i.e., ZCC, ZPA).</p> <p>The TMU specification was modified for bc.pnet.r70.</p>	
Developer Guidance	<p>A failed TMU can be retransmitted.</p> <p>Even though the fields of the ZPJ2 sub-segment may not be populated, the sub-segment must repeat three times, or it will not pass conformance checks in the PharmaNet applications.</p>	
Trigger Event	11	
CPhA Version	03, 70	
Message Model	MSH	Message Header
	ZZZ	Transaction Control
	ZCA	CPhA Segment A - Message Destination, Purpose and Control Elements
	ZCB	CPhA Segment B - Provider Information
	ZCC	Beneficiary Information
	ZCD	Prescription and Professional Service Information
	ZPJ	Claim Information

Table 36 TMU_61_RESPONSE

Interaction ID	TMU_61_RESPONSE
Interaction Business Name	[Medication Update Reversal - TMU (61) - Output]
Interaction Description	This is the response message.
Considerations	<p>Warning and error messages must be displayed and must comply with the mandatory display standards for the transaction.</p> <p>Test for any of the following:</p> <ul style="list-style-type: none"> • A response status field not equaling: <ul style="list-style-type: none"> ○ '0' for each ZZZ segment returned. ○ 'Y' for each ZCG segment returned. ○ 'Z' for each ZCH segment returned. • A transaction text field not equaling 'blanks' or 0 – Operation Successful' for each ZZZ segment returned. • A response status field in the ZCE segment (if returned) not equal to 'A' or 'V' and the response codes field in the ZCE segment (if returned) is not blank. <p>Notes:</p> <ol style="list-style-type: none"> 1. The most recent dispense on the patient's profile that matches the criteria supplied will be reversed. 2. If a PHN has been merged the new PHN is returned in the [ZCC.Provincial Health Care ID] field in the response.
Developer Guidance	<p>There is no message flag for a replacement PHN.</p> <p>Receiver must test for a different value in [ZCC.Provincial Health Care ID].</p>
Trigger Event	61
CPhA Version	03, 70

Interaction ID	TMU_61_RESPONSE	
Message Model	MSH	Message Header
	ZZZ	Transaction Control
	ZCB	CPhA Segment B - Provider Information
	ZCC	Beneficiary Information

7.17 TPA (00/50) – Patient Address Update

This transaction is used by the Pharmacist to update a patient’s address in PharmaNet. It uses the PHN of the patient to find the existing address.

The Update Patient Address (TPA) transaction is used by a pharmacy to update a patient’s mailing address information. This transaction is performed by the Client Registry System (CRS).

Message Interactions:

Table 37 TPA_00_REQUEST

Interaction ID	TPA_00_REQUEST
Interaction Business Name	[Patient Address Update - TPA (00) - Input]
Interaction Description	This is an inquiry request message.
Considerations	<p>MSH, ZZZ, ZCA, ZCB segments are required on all requests.</p> <p>Encryption will be used on existing segments that contain Patient identifiers (i.e., ZCC, ZPA).</p> <p>Complete address</p> <p>The complete address must be entered and transmitted to ensure the address is updated correctly in PharmaNet.</p> <p>All required fields and the Address Prefix 2 field (if it contains data) must be entered.</p> <p>If the Address Prefix 2 field is left blank, it will be updated as blank on the Client Registry.</p> <p>Postal Codes</p> <p>PharmaNet returns an error if the postal code is left blank.</p> <p>Postal codes must:</p> <ul style="list-style-type: none"> • use the correct format (e.g., six alphanumeric characters with no spaces for Canada; and up to 10 A/N/S characters for other countries); and • be associated with the correct codes (e.g., Province Code, Country Code). <p>Examples:</p> <ul style="list-style-type: none"> • Canada: <ul style="list-style-type: none"> ○ Postal Code = ‘V9V9V9’

Interaction ID	TPA_00_REQUEST
	<ul style="list-style-type: none"> ○ Province Code = 'BC' ○ Country Code = 'CAN' ● United States: <ul style="list-style-type: none"> ○ Postal Code = '90210' ○ Province Code = 'CA' (i.e., California) ○ Country Code = 'USA' ● Other countries: <ul style="list-style-type: none"> ○ Postal Code = 00-368 ○ Province Code = 'XX' (i.e., Other) ○ Country Code = 'POL' (i.e., Poland) <p>Format for Canadian postal codes must be six (6) alphanumeric characters with no spaces (e.g., V9V9V9).</p> <p>If the patient's postal code is not available, the pharmacy must enter their facility's postal code.</p>

Interaction ID	TPA_00_REQUEST
Developer Guidance	<p>Modifications for bc.pnet.r70:</p> <p>Message is unmodified from version 03 (1999), however, the CPhA version number was changed by PharmaNet to “70” as part of a larger release.</p> <p>The following rules apply to components of the ZPA1 and ZPA2 sub-segments:</p> <ul style="list-style-type: none"> • The only accepted Address Type is M. • Address prefix 1 cannot be blank. • If country code sent is CAN or blank, Canadian address checks are performed as follows: <ul style="list-style-type: none"> ○ city cannot be blank ○ province cannot be blank ○ postal code cannot be blank ○ postal code must be in ANANAN format ○ first character of postal code is compared against the province code • Address prefix 1 must have 2 or more alphanumeric characters. • If the country code is not CAN or blank then no province and postal code edits are performed, and the province can be blank, and the postal code can be anything.
Trigger Event	00
CPhA Version	03, 70

Interaction ID	TPA_00_REQUEST	
Message Model	MSH	Message Header
	ZZZ	Transaction Control
	ZCA	CPhA Segment A - Message Destination, Purpose and Control Elements
	ZCB	CPhA Segment B - Provider Information
	ZPA	Patient Information

Table 38 TPA_50_RESPONSE

Interaction ID	TPA_50_RESPONSE	
Interaction Business Name	[Patient Address Update - TPA (50) - Output]	
Interaction Description	The TPA response is a simple acknowledgement to indicate if the patient address update request was successful or not.	
Considerations	<p>Warning and error messages must be displayed and must comply with the mandatory display standards for the transaction.</p> <p>Test for any of the following:</p> <ul style="list-style-type: none"> • A response status field not equaling: <ul style="list-style-type: none"> ○ '0' for each ZZZ segment returned. ○ 'Y' for each ZCG segment returned. ○ 'Z' for each ZCH segment returned. • A transaction text field not equaling 'blanks' or 0 – Operation Successful' for each ZZZ segment returned. • A response status field in the ZCE segment (if returned) not equal to 'A' or 'V' and the response codes field in the ZCE segment (if returned) is not blank. 	
Developer Guidance		
Trigger Event	50	
CPhA Version	03, 70	
Message Model	MSH	Message Header
	ZZZ	Transaction Control
	ZCB	CPhA Segment B - Provider Information

7.18 TPH (00/50) – Request PHN

This transaction will create a new patient record and assign a PHN.

This transaction is used by a pharmacy when a patient requesting a prescription does not have a valid PHN. This transaction is handled by the Client Registry System (CRS) if available.

Message Interactions:

Table 39 TPH_00_REQUEST

Interaction ID	TPH_00_REQUEST
Interaction Business Name	[PHN Assignment - TPH (00) - Input]
Interaction Description	This is an inquiry request message.
Considerations	<p>MSH, ZZZ, ZCA, ZCB segments are required on all requests.</p> <p>Encryption will be used on existing segments that contain Patient identifiers (i.e., ZCC, ZPA).</p> <p>[ZCC.Patient First Name] is partially validated by PharmaNet.</p> <p>First character must match.</p> <p>[ZCC.Patient Last Name] is partially validated by PharmaNet.</p> <p>First two characters must match.</p> <p>Name Search Before PHN Assignment</p> <p>A TPN transaction (patient name search) must be enforced prior to a TPH transaction (assigning a PHN).</p>
Developer Guidance	<p>Modifications for bc.pnet.r70:</p> <p>Message is unmodified from version 03 (1999), however, the CPhA version number was changed by PharmaNet to “70” as part of a larger release.</p> <p>The following rules apply to components of the ZPA1 and ZPA2 sub-segments:</p> <ul style="list-style-type: none"> • The only accepted Address Type is M. • Address prefix 1 cannot be blank. • If country code sent is CAN or blank, Canadian address checks are performed as follows: <ul style="list-style-type: none"> ○ city cannot be blank

Interaction ID	TPH_00_REQUEST	
	<ul style="list-style-type: none"> ○ province cannot be blank ○ postal code cannot be blank ○ postal code must be in ANANAN format ○ first character of postal code is compared against the province code ● Address prefix 1 must have 2 or more alphanumeric characters. ● If the country code is not CAN or blank, then no province and postal code edits are performed, and the province can be blank and the postal code can be anything. 	
Trigger Event	00	
CPhA Version	03, 70	
Message Model	MSH	Message Header
	ZZZ	Transaction Control
	ZCA	CPhA Segment A - Message Destination, Purpose and Control Elements
	ZCB	CPhA Segment B - Provider Information
	ZCC	CPhA Segment C - Beneficiary Information
	ZPA	Patient Information

Table 40 TPH_50_RESPONSE

Interaction ID	TPH_50_RESPONSE
Interaction Business Name	[PHN Assignment - TPH (50) - Output]
Interaction Description	This is the response message.
Considerations	<p>Warning and error messages must be displayed and must comply with the mandatory display standards for the transaction.</p> <p>Test for any of the following:</p> <ul style="list-style-type: none"> • A response status field not equaling: <ul style="list-style-type: none"> ○ '0' for each ZZZ segment returned. ○ 'Y' for each ZCG segment returned. ○ 'Z' for each ZCH segment returned. • A transaction text field not equaling 'blanks' or 0 – Operation Successful' for each ZZZ segment returned. • A response status field in the ZCE segment (if returned) not equal to 'A' or 'V' and the response codes field in the ZCE segment (if returned) is not blank.
Developer Guidance	<p>The ZPA segment can repeat up to 999 times and has a minimum of zero (if there are no names to return), though in reality the TPN server will only return a maximum of 25.</p> <p>The ZZZ segment may contain fields with trailing spaces, as well as fields with only spaces as values.</p> <p>The PharmaNet system provides such response for TPH transaction only.</p>
Trigger Event	50
CPhA Version	03, 70

Interaction ID	TPH_50_RESPONSE	
Message Model	MSH	Message Header
	ZZZ	Transaction Control
	ZCB	CPhA Segment B - Provider Information
	ZCC	CPhA Segment C - Beneficiary Information
	{[ZPA]}	Patient Information

7.19 TPI (00/50) – Patient Medication Profile Information Update

A patient medication profile information update transaction is used to add or change profile information on the patient’s record.

Message Interactions:

Table 41 TPI_00_REQUEST

Interaction ID	TPI_00_REQUEST
Interaction Business Name	[Patient Profile Information Update - TPI (00) - Input]
Interaction Description	This is an inquiry request message.
Considerations	<p>MSH, ZZZ, ZCA, ZCB segments are required on all requests.</p> <p>Encryption will be used on existing segments that contain Patient identifiers (i.e., ZCC, ZPA).</p> <p>TPI is used for four types of updates:</p> <ul style="list-style-type: none"> • record an Adverse Reaction (ZPB2) • record a Clinical Condition (ZPB1) • Discontinue a Dispense (ZPB3) • Add a Dispense Comment (ZPB3) <p>Any combination of types is permitted in the same message.</p> <p>Discontinue a Dispense</p> <p>To discontinue a dispense use the [ZPB.RX Information Block].</p> <p>This is the ZPB3 sub-segment.</p> <p>Clinical Condition Entry With a Comment</p> <p>To enter a clinical condition with a comment, use the [ZPB.Clinical Information Block].</p> <p>This is the ZPB1 sub-segment.</p> <p>Clinical Condition Entry Without a Comment</p> <p>To enter a clinical condition without a comment, use the [ZPB.Clinical Information Block], omitting the optional comment fields.</p> <p>Adverse Reaction Entry</p> <p>To add an adverse reaction, use the [ZPB. Reaction</p>

Interaction ID	TPI_00_REQUEST	
	Information Block]. Edit an Adverse Reaction To change or add a comment on an existing adverse drug reaction uses the [ZPB. Reaction Information Block], OMITTING the [Date Reported] field.	
Developer Guidance		
Trigger Event	00	
CPhA Version	03, 70	
Message Model	MSH	Message Header
	ZZZ	Transaction Control
	ZCA	CPhA Segment A - Message Destination, Purpose and Control Elements
	ZCB	CPhA Segment B - Provider Information
	ZCC	Beneficiary Information
	ZPB	Patient History Response

Table 42 TPI_50_RESPONSE

Interaction ID	TPI_50_RESPONSE
Interaction Business Name	[Patient Profile Information Update - TPI (50) - Output]
Interaction Description	The TPI response is an acknowledgement that returns a simple status code (and text) to indicate that the update(s) have been applied to the patient profile.
Considerations	<p>Warning and error messages must be displayed and must comply with the mandatory display standards for the transaction.</p> <p>Test for any of the following:</p> <ul style="list-style-type: none"> • A response status field not equaling:

Interaction ID	TPI_50_RESPONSE	
	<ul style="list-style-type: none"> ○ '0' for each ZZZ segment returned. ○ 'Y' for each ZCG segment returned. ○ 'Z' for each ZCH segment returned. ● A transaction text field not equaling 'blanks' or 0 – Operation Successful' for each ZZZ segment returned. ● A response status field in the ZCE segment (if returned) not equal to 'A' or 'V' and the response codes field in the ZCE segment (if returned) is not blank. 	
Developer Guidance		
Trigger Event	50	
CPhA Version	03, 70	
Message Model	MSH	Message Header
	ZZZ	Transaction Control
	ZCB	CPhA Segment B - Provider Information
	ZCC	Beneficiary Information
	{{ZPI}}	Fan-Out

7.20 TPM (00/50) – Profile Mailing Request

This transaction will request to have the patient’s profile mailed to the patient.

The purpose of this request is to allow the pharmacist, on behalf of the patient, to submit a request to the College of Pharmacists to print the patient profile.

The patient profile includes the patient demographic, clinical, adverse reaction, and medication history information; and a log of all access to the profile including those where no medication was dispensed.

The College of Pharmacists of BC co-ordinates the request and subsequent mailing of the patient record.

Message Interactions:

Table 43 TPM_00_REQUEST

Interaction ID	TPM_00_REQUEST	
Interaction Business Name	[Profile Mailing Request - TPM (00) - Input]	
Interaction Description	This is an inquiry request message.	
Considerations	MSH, ZZZ, ZCA, ZCB segments are required on all requests. Encryption will be used on existing segments that contain Patient identifiers (i.e., ZCC, ZPA).	
Developer Guidance	Modifications for bc.pnet.r70: <ul style="list-style-type: none"> Message is unmodified from version 03 (1999), however, the CPhA version number was changed by PharmaNet to “70” as part of a larger release. 	
Trigger Event	00	
CPhA Version	03, 70	
Message Model	MSH	Message Header
	ZZZ	Transaction Control
	ZCA	CPhA Segment A - Message Destination, Purpose and Control Elements
	ZCB	CPhA Segment B - Provider Information

Interaction ID	TPM_00_REQUEST	
	ZCC	Beneficiary Information

Table 44 TPM_50_RESPONSE

Interaction ID	TPM_50_RESPONSE
Interaction Business Name	[Profile Mailing Request - TPM (00) – Output]
Interaction Description	
Considerations	<p>Warning and error messages must be displayed and must comply with the mandatory display standards for the transaction.</p> <p>Test for any of the following:</p> <ul style="list-style-type: none"> • A response status field not equaling: <ul style="list-style-type: none"> ○ ‘0’ for each ZZZ segment returned. ○ ‘Y’ for each ZCG segment returned. ○ ‘Z’ for each ZCH segment returned. • A transaction text field not equaling ‘blanks’ or 0 – Operation Successful’ for each ZZZ segment returned. • A response status field in the ZCE segment (if returned) not equal to ‘A’ or ‘V’ and the response codes field in the ZCE segment (if returned) is not blank. <p>If a PHN has been merged the new PHN is returned in the [ZCC.Provincial Health Care ID] field in the response.</p>
Developer Guidance	<p>Modifications for bc.pnet.r70:</p> <p>Message is unmodified from version 03 (1999), however, the CPhA version number was changed by PharmaNet to “70” as part of a larger release.</p> <p>There is no message flag for a replacement PHN.</p> <p>Receiver must test for a different value in [ZCC.Provincial Health Care ID].</p>
Trigger Event	50

Interaction ID	TPM_50_RESPONSE	
CPhA Version	03, 70	
Message Model	MSH	Message Header
	ZZZ	Transaction Control
	ZCB	CPhA Segment B - Provider Information
	ZCC	Beneficiary Information
	{{ZPI}}	Fan-Out

7.21 TPN (00/50) – Patient Name Search

The Patient Name Search uses the name, date of birth and gender to find the patient’s record and PHN in PharmaNet.

The purpose of this transaction is to lookup a PHN based on the demographic search criteria.

This transaction is used when a patient knows that they have a PHN, but they do not know the number.

Using this transaction helps to avoid the creation of duplicate PHNs.

Message Interactions:

Table 45 TPN_00_REQUEST

Interaction ID	TPN_00_REQUEST
Interaction Business Name	Patient Name Search - TPN (00) - Input
Interaction Description	This is an inquiry request message.
Considerations	<p>MSH, ZZZ, ZCA, ZCB segments are required on all requests.</p> <p>Encryption will be used on existing segments that contain Patient identifiers (i.e., ZCC, ZPA).</p> <p>Message was NOT modified for CPhA ‘70’.</p> <p>In other words, this message is backward compatible with the release ‘03’ message.</p> <p>PharmaNet currently supports the version ‘03’ messages for legacy implementations.</p> <p>For new implementations note the coding requirement for the [ZCA.CPhA Version Number] field.</p> <p>A TPN transaction coming through PharmaNet will be processed by the Provincial Client Registry.</p> <p>If Client Registry is not available, the search will be processed by PharmaNet’s ‘Stand-in’ function.</p> <p>The ‘Stand-in’ search in PharmaNet will return only exact matches.</p> <p>Patient Name Search Options</p> <p>Name search options are as follows:</p> <ul style="list-style-type: none"> • Search using full surname [ZPA.Family Name],

Interaction ID	TPN_00_REQUEST
	<p>complete or partial given name [ZPA.Given Name] (first name is wildcarded if less than 15 chars in length), gender [ZCC. Patient Gender] and full date of birth [ZCC. Patient Date of Birth].</p> <ul style="list-style-type: none"> • Use full DOB (YYYYMMDD) to return all exact matches, as well as matches where the day (DD) is equal to 01. • Search using full surname, complete or partial given name, gender and partial date of birth (YYYY only). • Returns all exact matches, as well as matches for patients whose date of birth falls within a +/- five (5) year window of the year provided. <p>PharmaNet Extended search functions</p> <p>The name search will first attempt to find exact matches using all the characters of the given name provided.</p> <p>If no matches are found, then a re-search is automatically done using only the first letter of the given name.</p> <p>This re-search does not function during 'Stand-in' processing.</p> <p>Regardless of patient gender entered ('M' or 'F'), the search will return exact matches on the gender provided and any records with a gender of 'U' (unknown).</p>
Developer Guidance	<p>Modifications for bc.pnet.r70:</p> <p>Message is unmodified from version 03 (1999), however, the CPhA version number was changed by PharmaNet to "70" as part of a larger release.</p>
Trigger Event	00
CPhA Version	03, 70

Interaction ID	TPN_00_REQUEST	
Message Model	MSH	Message Header
	ZZZ	Transaction Control
	ZCA	CPhA Segment A - Claims Standard Header Message
	ZCB	CPhA Segment B - Provider Information
	ZCC	Beneficiary Information
	ZPA	Patient Information

Table 46 TPN_50_RESPONSE

Interaction ID	TPN_50_RESPONSE
Interaction Business Name	Patient Name Search - TPN (50) - Output
Interaction Description	This is the response message
Considerations	<p>Warning and error messages must be displayed and must comply with the mandatory display standards for the transaction.</p> <p>Test for any of the following:</p> <ul style="list-style-type: none"> • A response status field not equaling: <ul style="list-style-type: none"> ○ '0' for each ZZZ segment returned. ○ 'Y' for each ZCG segment returned. ○ 'Z' for each ZCH segment returned. • A transaction text field not equaling 'blanks' or 0 – Operation Successful' for each ZZZ segment returned. • A response status field in the ZCE segment (if returned) not equal to 'A' or 'V' and the response codes field in the ZCE segment (if returned) is not blank. <p>If no data exists for the patient the transaction will return successfully, but applicable data segments will be absent from the returned message.</p> <p>A TPN transaction coming through PharmaNet will be</p>

Interaction ID	TPN_50_RESPONSE
	<p>processed by CRS.</p> <p>If CRS is not available, the search will be processed via its Stand In function.</p> <p>A CRS search using full surname, complete or partial given name, gender and FULL date of birth (CCYMMDD) to return all exact matches, as well as matches where the DD (day) is 01.</p> <p>A CRS search using full surname, complete or partial given name, gender and PARTIAL date of birth (CCYY only) to return all exact matches, as well as matches for patients whose date of birth falls within a +/- five-year window of the year provided.</p> <p>The Stand In search in PharmaNet will return only exact matches.</p> <p>Regardless of patient gender entered (M or F), the search will return exact matches on the gender provided and any records with a gender of U (unknown).</p> <p>The Stand In search in PharmaNet will return only exact matches.</p> <p>Both the CRS and Stand In searches will return up to 25 matches.</p> <p>If the number of matches exceeds 25, an error message will be returned.</p> <p>The name search will first attempt to find exact matches using all the characters of the given name provided.</p> <p>If no matches are found, then a re-search is automatically done using only the first letter of the given name.</p> <p>The re-search does not function during Stand In processing.</p> <p>The TPN does not indicate in the response what search criteria were used for the search.</p>
Developer Guidance	<p>No Matches Found</p> <p>If no matches are found:</p> <ul style="list-style-type: none"> • the transaction will be completed successfully, • the Transaction Segment Count [ZZZ.6] will be zeros,

Interaction ID	TPN_50_RESPONSE	
	<p>and</p> <ul style="list-style-type: none"> • one of the following messages will be returned and must be displayed to the user: <ul style="list-style-type: none"> ○ If Client Registry is available: <ul style="list-style-type: none"> ▪ ‘CRNS002 Nothing found matching search parameters’ ○ For Stand-in Processing: <ul style="list-style-type: none"> ▪ ‘108 No matches found for selection criteria chosen’ <p>Exceeding 25 Matches</p> <p>Both the Client Registry and ‘Stand-in’ searches will return up to 25 matches.</p> <p>If the number of matches exceeds 25, the Transaction Segment Count (ZZZ.6) will be zeros and the following message will be returned:</p> <ul style="list-style-type: none"> • 106 Selection criteria chosen resulted in too many matches. <p>Sort Order:</p> <ul style="list-style-type: none"> • All matches that are returned will be in alphabetic order and, where the surname and given names are the same, in ascending order by name and PHN. <p>Modifications for bc.pnet.r70:</p> <ul style="list-style-type: none"> • Message is unmodified from version 03 (1999), however, the CPhA version number was changed by PharmaNet to “70” as part of a larger release. 	
Trigger Event	50	
CPhA Version	03, 70	
Message Model	MSH	Message Header
	ZZZ	Transaction Control
	ZCB	CPhA Segment B - Provider Information

Interaction ID	TPN_50_RESPONSE	
	{	Demographic Information group
	ZCC	Beneficiary Information
	ZPA	Patient Information
	}	End of segment group

7.22 TRP (00/50) – Request Patient Profile

The TRP transaction returns the dispensed medication history for a patient as well as patient clinical conditions and adverse reactions. TRP will return all data for the past 14 months.

Message Interactions:

Table 47 TRP_00_REQUEST

Interaction ID	TRP_00_REQUEST
Interaction Business Name	[Patient Profile Request - TRP (00) - Input] [Request Patient Profile - Input]
Interaction Description	The purpose of this transaction is to inquire on the patient clinical, adverse reaction and medication profile.
Considerations	<p>MSH, ZZZ, ZCA, ZCB segments are required on all requests.</p> <p>Encryption will be used on existing segments that contain Patient identifiers (i.e., ZCC, ZPA).</p> <p>ZCC.1 [Carrier ID] is returned if populated on input.</p> <p>ZCC.5 [Patient Date of Birth] is returned if populated on input.</p> <p>ZCC.8 [Patient First Name] is partially validated by PharmaNet. First character must match.</p> <p>ZCC.9 [Patient Last Name] is partially validated by PharmaNet. First two characters must match.</p> <p>ZCC.11 [Patient Gender] is returned if populated on input.</p> <p>ZCC.2 [Group Number or Code], ZCC.3 [Client ID Number or Code], ZCC.4 [Patient Code], ZCC.6 [Cardholder Identity], ZCC.7 [Relationship] are returned if populated on input but with warning messages.</p> <p>TRP will return all data for the past 14 months.</p> <p>The 14-month period is calculated as 366 days + 62 days = 428 days.</p> <p>The current System Date will be used to calculate the 14-month cut off date.</p> <p>Medication with the same trace number as the current request (within the same day) will also not be returned when the profile request is in combination with a prescription</p>

Interaction ID	TRP_00_REQUEST
	<p>dispense.</p> <p>This is to ensure the prescription being dispensed is not returned in the profile.</p> <p>The process of retrieving the information will depend on whether the location which originally made the patient profile request is a pharmacy location or a non-pharmaceutical location:</p> <ul style="list-style-type: none"> • Pharmacy Locations <ul style="list-style-type: none"> ○ All active clinical information is retrieved and sent back to the pharmacy. ○ All active adverse reaction information is retrieved and sent back to the pharmacy. ○ All pharmaceutical and non-pharmaceutical medication history which meet the criteria set in 1 and were filled within the last 14 months, are retrieved and sent back to the pharmacy. • Non-Pharmacy Locations: <ul style="list-style-type: none"> ○ Clinical, adverse reaction and pharmaceutical medication history information are not retrieved. ○ Non-pharmaceutical medication history information for the past 14 months is sent back to the pharmacy which originally issued the patient profile request.
Developer Guidance	<p>Modifications for bc.pnet.r70:</p> <p>For the TRP(00) output message, name of the dispensed medication is stored in the field “Generic Name/Manufacturer” of type (A/N/S 68 bytes) while in the TRX(X5) message, name of the prescribed medication is stored in the field “Drug Device Name” of type (A/N 100 bytes).</p> <p>The differences in medication name type/length are due to legacy reasons. (Ref #SP30)</p>
Trigger Event	00
CPhA Version	03, 70

Interaction ID	TRP_00_REQUEST	
Message Model	MSH	Message Header
	ZZZ	Transaction Control
	ZCA	CPhA Segment A - Message Destination, Purpose and Control Elements
	ZCB	CPhA Segment B - Provider Information
	ZCC	CPhA Segment C - Beneficiary Information

Table 48 TRP_50_RESPONSE

Interaction ID	TRP_50_RESPONSE
Interaction Business Name	[Patient Profile Request - TRP (50) - Output] [Request Patient Profile - Output]
Interaction Description	This is the response message.
Considerations	<p>Warning and error messages must be displayed and must comply with the mandatory display standards for the transaction.</p> <p>Test for any of the following:</p> <ul style="list-style-type: none"> • A response status field not equaling: <ul style="list-style-type: none"> ○ '0' for each ZZZ segment returned ○ 'Y' for each ZCG segment returned ○ 'Z' for each ZCH segment returned • A transaction text field not equaling 'blanks' or 0 – Operation Successful' for each ZZZ segment returned. • A response status field in the ZCE segment (if returned) not equal to 'A' or 'V' and the response codes field in the ZCE segment (if returned) is not blank. <p>If no data exists for the patient the transaction will return successfully, but applicable data segments will be absent from the returned message.</p> <p>If the PHN has been merged into new PHN, the new PHN will</p>

Interaction ID	TRP_50_RESPONSE
	<p>automatically be used to retrieve the Patient Profile information and will be returned in the ZCC.10 [Provincial Health Care ID] field in the response.</p> <p>In these cases, the POS software is responsible for indicating that the PHN has been changed.</p>
Developer Guidance	<p>Modifications for bc.pnet.r70 (do not use with bc.pnet.r03 development):</p> <ul style="list-style-type: none"> • Response message structure extended to include the Medication Management Issues, Clinical Services, Location ID, Adaptation Indicator and PharmaNet Prescription Identifier that are associated with the historical medication in the ZPB3 sub-segment (Rx Information Block) of the response. • The historical medications will be returned in the same order as the revised PharmaNet version 03 transaction. • Dispenses of adaptation prescriptions are identified by new values in the ZPB3 sub-segment (Rx Information Block) Rx Status field of the historical medications that are returned in the response. • Return historical medications in order of date of service (descending) and last updated time stamp (descending) in the response. • The MMI Codes and Clinical Service Codes that are related to the historical medication row are concatenated and returned in the MMI Codes and the Clinical Service Codes fields, respectively, of the ZPB3 sub-segment. <p>There is no message flag for a replacement PHN.</p> <p>Receiver must test for a different value in [ZCC.Provincial Health Care ID].</p> <p>Medication History is returned in reverse chronological order.</p> <p>See field notes for [ZPB.RX Information Block]</p>
Trigger Event	50

Interaction ID	TRP_50_RESPONSE	
CPhA Version	03, 70	
Message Model	MSH	Message Header
	ZZZ	Transaction Control
	ZCB	CPhA Segment B - Provider Information
	ZCC	CPhA Segment C - Beneficiary Information
	ZPB	Patient History Response

7.23 TRR (00/50) – Retrieve Patient Profile – Most Recent 15

The TRR transaction returns the dispensed medication history for a patient as well as patient clinical conditions and adverse reactions.

TRR will return the most recent 15 prescription dispenses occurring within the past 14 months.

Message Interactions:

Table 49 TRR_00_REQUEST

Interaction ID	TRR_00_REQUEST	
Interaction Business Name	[Patient Profile Request - TRR (00) - Input] [Retrieve Patient Profile - Most Recent Only - Input]	
Interaction Description	This is the query request message	
Considerations	MSH, ZZZ, ZCA, ZCB segments are required on all requests. Encryption will be used on existing segments that contain Patient identifiers (i.e., ZCC, ZPA). TRP will return all data for the past 14 months.	
Developer Guidance	Modifications for bc.pnet.r70 release	
Trigger Event	00	
CPhA Version	03, 70	
Message Model	MSH	Message Header
	ZZZ	Transaction Control
	ZCA	CPhA Segment A - Message Destination, Purpose and Control Elements
	ZCB	CPhA Segment B - Provider Information
	ZCC	CPhA Segment C - Beneficiary Information

Table 50 TRR_50_RESPONSE

Interaction ID	TRR_50_RESPONSE
Interaction Business Name	[Patient Profile Request – TRR (50) - Output] [Retrieve Patient Profile – Most Recent Only - Output]
Interaction Description	This is the response message
Considerations	<p>Warning and error messages must be displayed and must comply with the mandatory display standards for the transaction.</p> <p>Test for any of the following:</p> <ul style="list-style-type: none"> • A response status field not equaling: <ul style="list-style-type: none"> ○ ‘0’ for each ZZZ segment returned. ○ ‘Y’ for each ZCG segment returned. ○ ‘Z’ for each ZCH segment returned. • A transaction text field not equaling ‘blanks’ or 0 – Operation Successful’ for each ZZZ segment returned. • A response status field in the ZCE segment (if returned) not equal to ‘A’ or ‘V’ and the response codes field in the ZCE segment (if returned) is not blank. <p>If no data exists for the patient the transaction will return successfully, but applicable data segments will be absent from the returned message.</p> <p>If a PHN has been merged the new PHN is returned in the [ZCC.Provincial Health Care ID] field in the response.</p>

Interaction ID	TRR_50_RESPONSE
Developer Guidance	<p>Modifications for bc.pnet.r70 (do not use with bc.pnet.r03 development):</p> <ul style="list-style-type: none"> • Response message structure extended to include the Medication Management Issues, Clinical Services, Location ID, Adaptation Indicator and PharmaNet Prescription Identifier that are associated with the historical medication in the ZPB3 sub-segment (Rx Information Block) of the response. • The historical medications will be returned in the same order as the revised PharmaNet version 03 transaction. • Dispenses of adaptation prescriptions are identified by new values in the ZPB3 sub-segment (Rx Information Block) Rx Status field of the historical medications that are returned in the response. • Return historical medications in order of date of service (descending) and last updated time stamp (descending) in the response. <p>The MMI Codes and Clinical Service Codes that are related to the historical medication row are concatenated and returned in the MMI Codes and the Clinical Service Codes fields, respectively, of the ZPB3 sub-segment.</p> <p>When a TRR transaction returns successfully, the following message is returned in the transaction text field of the ZZZ segment 'Operation Successful: most recent <N1> Rx's'. (N1 represents the system variable, currently set to 15)</p> <p>There is no message flag for a replacement PHN.</p> <p>Receiver must test for a different value in [ZCC.Provincial Health Care ID].</p>
Trigger Event	50
CPhA Version	03, 70

Interaction ID	TRR_50_RESPONSE	
Message Model	MSH	Message Header
	ZZZ	Transaction Control
	ZCB	CPhA Segment B - Provider Information
	ZCC	CPhA Segment C - Beneficiary Information
	ZPB	Patient History Response

7.24 TRS (00/50) – Retrieve Patient Profile – Filled Elsewhere

The TRS transaction returns the dispensed medication history for a patient as well as patient clinical conditions and adverse reactions.

The TRS transaction will return all dispenses of prescriptions for the patient at all pharmacies in the province except the pharmacy sending the transaction.

Message Interactions:

Table 51 TRS_00_REQUEST

Interaction ID	TRS_00_REQUEST	
Interaction Business Name	[Patient Profile Request - TRS (00) - Input] [Retrieve Patient Profile – Filled Elsewhere - Input]	
Interaction Description	This is an inquiry request message.	
Considerations	MSH, ZZZ, ZCA, ZCB segments are required on all requests. Encryption will be used on existing segments that contain Patient identifiers (i.e., ZCC, ZPA). TRP will return all data for the past 14 months.	
Developer Guidance		
Trigger Event	00	
CPhA Version	03, 70	
Message Model	MSH	Message Header
	ZZZ	Transaction Control
	ZCA	CPhA Segment A - Message Destination, Purpose and Control Elements
	ZCB	CPhA Segment B - Provider Information
	ZCC	CPhA Segment C - Beneficiary Information

Table 52 TRS_50_RESPONSE

Interaction ID	TRS_50_RESPONSE
Interaction Business Name	<p>[Patient Profile Request - TRS (00) - Output]</p> <p>[Retrieve Patient Profile – Filled Elsewhere – Output]</p>
Interaction Description	This is the response message
Considerations	<p>Warning and error messages must be displayed and must comply with the mandatory display standards for the transaction.</p> <p>Test for any of the following:</p> <ul style="list-style-type: none"> • A response status field not equaling: <ul style="list-style-type: none"> ○ ‘0’ for each ZZZ segment returned. ○ ‘Y’ for each ZCG segment returned. ○ ‘Z’ for each ZCH segment returned. • A transaction text field not equaling ‘blanks’ or 0 – Operation Successful’ for each ZZZ segment returned. • A response status field in the ZCE segment (if returned) not equal to ‘A’ or ‘V’ and the response codes field in the ZCE segment (if returned) is not blank. <p>If no data exists for the patient the transaction will return successfully, but applicable data segments will be absent from the returned message.</p> <p>If a PHN has been merged the new PHN is returned in the [ZCC.Provincial Health Care ID] field in the response.</p>

Interaction ID	TRS_50_RESPONSE
Developer Guidance	<p>When a TRS transaction returns successfully, the following message is returned in the transaction text field of the ZZZ segment '3049 Operation Successful: Rx's not filled here'.</p> <p>Modifications for bc.pnet.r70 (do not use with bc.pnet.r03 development):</p> <ul style="list-style-type: none"> • Response message structure extended to include the Medication Management Issues, Clinical Services, Location ID, Adaptation Indicator and PharmaNet Prescription Identifier that are associated with the historical medication in the ZPB3 sub-segment (Rx Information Block) of the response. • The historical medications will be returned in the same order as the revised PharmaNet version 03 transaction. • Dispenses of adaptation prescriptions are identified by new values in the ZPB3 sub-segment (Rx Information Block) Rx Status field of the historical medications that are returned in the response. • Return historical medications in order of date of service (descending) and last updated time stamp (descending) in the response. <p>The MMI Codes and Clinical Service Codes that are related to the historical medication row are concatenated and returned in the MMI Codes and the Clinical Service Codes fields, respectively, of the ZPB3 sub-segment.</p> <p>There is no message flag for a replacement PHN.</p> <p>Receiver must test for a different value in [ZCC.Provincial Health Care ID].</p>
Trigger Event	50
CPhA Version	03, 70

Interaction ID	TRS_50_RESPONSE	
Message Model	MSH	Message Header
	ZZZ	Transaction Control
	ZCB	CPhA Segment B - Provider Information
	ZCC	CPhA Segment C - Beneficiary Information
	ZPB	Patient History Response

7.25 TRX (X0/X5) – Retrieve Patient Prescription

This interaction enables users to retrieve prescriptions for a patient.

Message Interactions:

Table 53 TRX_X0_REQUEST

Interaction ID	TRX_X0_REQUEST
Interaction Business Name	[Retrieve Patient Prescription - TRX (X0) - Input]
Interaction Description	This is an inquiry request message.
Considerations	<p>MSH, ZZZ, ZCA, ZCB segments are required on all requests.</p> <p>Encryption will be used on existing segments that contain Patient identifiers (i.e., ZCC, ZPA).</p> <p>[ZCC.Patient First Name] is partially validated by PharmaNet. First character must match.</p> <p>[ZCC.Patient Last Name] is partially validated by PharmaNet. First two characters must match.</p> <p>If a protective word exists for the patient, the protective word must be submitted with the request transaction else the transaction will be rejected.</p>
Developer Guidance	<p>New for bc.pnet.r70</p> <p>Query Parameters:</p> <ul style="list-style-type: none"> • All fields of ZPR segment • ZCC.Provincial Health Care ID (Required).PHN field. • ZCC.Patient Last Name <p>Name validation is performed based on following rules:</p> <ul style="list-style-type: none"> • First Name: If Patient First Name is spaces OR If the first character of Patient First Name matches the first character of FIRST_NAME on PHN Patient record; • Last Name: If Patient Last Name is spaces OR If the first two characters of Patient Last Name match the first two character of LAST_NAME on PHN Patient record.

Interaction ID	TRX_X0_REQUEST	
Trigger Event	X0	
CPhA Version	70	
Message Model	MSH	Message Header
	ZZZ	Transaction Control
	ZCA	CPhA Segment A - Claims Standard Header Message
	ZCB	CPhA Segment B - Provider Information
	ZCC	Beneficiary Information
	ZPR	Prescription Information Request

Table 54 TRX_X5_RESPONSE

Interaction ID	TRX_X5_RESPONSE
Interaction Business Name	[Retrieve Patient Prescription - TRX (X5) - Output]
Interaction Description	This is the response message
Considerations	<p>Warning and error messages must be displayed and must comply with the mandatory display standards for the transaction.</p> <p>Test for any of the following:</p> <ul style="list-style-type: none"> • A response status field not equaling: <ul style="list-style-type: none"> ○ '0' for each ZZZ segment returned. ○ 'Y' for each ZCG segment returned. ○ 'Z' for each ZCH segment returned. • A transaction text field not equaling 'blanks' or 0 – Operation Successful' for each ZZZ segment returned. • A response status field in the ZCE segment (if returned) not equal to 'A' or 'V' and the response codes field in the ZCE segment (if returned) is not blank. <p>If a PHN has been merged the new PHN is returned in the [ZCC.Provincial Health Care ID] field in the response.</p>
Developer Guidance	<p>New for bc.pnet.r70</p> <p>Prescriptions are returned by PharmaNet in the following order:</p> <ul style="list-style-type: none"> • Date Prescribed (descending) • Record Created Timestamp (effectively "last updated" timestamp - descending) <p>If the Last Update Timestamp is submitted only rows with the Record Create Timestamp or Last Update Timestamp that are equal to or greater than the submitted Last Update Timestamp are returned.</p> <p>So, this would return same day prescriptions.</p> <p>The search is not limited to date only.</p> <p>The time component is optional, but if included it will be used as part of the search parameters.</p> <p>When one or more adaptation prescriptions are returned, the</p>

Interaction ID	TRX_X5_RESPONSE	
	<p>original prescription will also be returned.</p> <p>If no data exists for the patient, the transaction will return successfully, but applicable data segments will be absent from the returned message.</p> <p>Only one Active instance of an RX_ID (the RX_ID with the highest sequence number or 'most current' instance) is returned.</p> <p>If a response exceeds the record limit (currently 999) an error message is returned as well.</p> <p>There is no message flag for a replacement PHN.</p> <p>Receiver must test for a different value in [ZCC.Provincial Health Care ID].</p>	
Trigger Event	X5	
CPhA Version	70	
Message Model	MSH	Message Header
	ZZZ	Transaction Control
	ZCB	Provider Information
	ZCC	Beneficiary Information
	{{ ZPI }}	Fan-Out
	{{ ZPX }}	Prescription Information

7.26 TRX (X1/X6) – Record Prescription

The TRX record transaction (Record Prescription) is used by Providers to record a prescription in PharmaNet.

[This transaction is used by a prescriber to send a prescription to PharmaNet.]

Message Interactions:

Table 55 TRX_X1_REQUEST

Interaction ID	TRX_X1_REQUEST
Interaction Business Name	[Record Prescription - TRX (X1) - Input]
Interaction Description	This is an inquiry request message.
Considerations	MSH, ZZZ, ZCA, ZCB segments are required on all requests. Encryption will be used on existing segments that contain Patient identifiers (i.e., ZCC, ZPA).

Interaction ID	TRX_X1_REQUEST	
Developer Guidance	<p>New for bc.pnet.r70</p> <p>If ZPX.[DIN_PIN] is NOT submitted AND if the ZPX.[GCN Sequence Number] is submitted then ZPX.[Device Indicator] must be 'N'.</p> <p>If ZPX.[Device Indicator] is 'Y', both ZPX.[Compound Ingredients] and ZPX.[Compound Instructions] must be spaces.</p> <p>CS/MMI message set field is alphanumeric with a maximum length 56.</p> <p>The message set field is broken down into 7 fixed length fields of size 8.</p> <p>The code for each fixed length field is left justified with any unused character positions being set to spaces.</p> <p>Any unused fixed length fields are not populated (e.g., 1 code – 8 characters used, 2 codes – 16 characters used, 3 codes – 24 characters used).</p> <p>Do not include extra spaces to pad out the final field value in the list of CS or MMI codes if multiple codes are being submitted.</p> <p>For example:</p> <p><u>INPUT</u></p> <p>ZPX ZPX1^N^P1^XYCVDGREAT^^^^PHARMACIST^^113^12409^12409^20200827^^20200827^2041294^^AMOXICILLIN^500^5^1^^50^^250^99^BID^250^TAB^1^^^N^N^N^N^N^N^N^N^N^N^TAKE 1 A DAY^^^^MMI1 MMI2 MMI3 MMI4^CS01 CS02 CS03 CS04^^^^^^^^^^1115^</p>	
Trigger Event	X1	
CPhA Version	70	
Message Model	MSH	Message Header
	ZZZ	Transaction Control
	ZCA	CPhA Segment A - Claims Standard Header Message

Interaction ID	TRX_X1_REQUEST	
	ZCB	CPhA Segment B - Provider Information
	ZCC	CPhA Segment C - Beneficiary Information
	ZPX	Prescription Information

Table 56 TRX_X6_RESPONSE

Interaction ID	TRX_X6_RESPONSE
Interaction Business Name	[Record Prescription - TRX (X6) - Output]
Interaction Description	This is the response message
Considerations	<p>Warning and error messages must be displayed and must comply with the mandatory display standards for the transaction.</p> <p>Test for any of the following:</p> <ul style="list-style-type: none"> • A response status field not equaling: <ul style="list-style-type: none"> ○ '0' for each ZZZ segment returned. ○ 'Y' for each ZCG segment returned. ○ 'Z' for each ZCH segment returned. • A transaction text field not equaling 'blanks' or 0 – Operation Successful' for each ZZZ segment returned. • A response status field in the ZCE segment (if returned) not equal to 'A' or 'V' and the response codes field in the ZCE segment (if returned) is not blank. <p>If no data exists for the patient the transaction will return successfully, but applicable data segments will be absent from the returned message.</p> <p>The ZPE segment (containing the ZPB3 sub-segments) is only returned if the DUE process produces a warning.</p> <p>If a warning is produced, the ZPE segment and the ZPB3 sub-segments will exist and be populated with the appropriate fields.</p> <p>The ZPX segment returns the newly recorded RX.</p>

Interaction ID	TRX_X6_RESPONSE	
	<p>It consists of one ZPX1 sub-segment (Prescription Information). If duplicates are found multiple ZPX segments will be returned (a maximum of 999 can be returned). The newly recorded RX will be returned as the first ZPX segment, followed by the duplicate RX ZPX segments which are returned in Last Update Timestamp, RX ID descending order. If a PHN has been merged the new PHN is returned in the [ZCC.Provincial Health Care ID] field in the response.</p>	
Developer Guidance	<p>New for bc.pnet.r70. There is no message flag for a replacement PHN. Receiver must test for a different value in ZCC.Provincial Health Care ID]. ZCC, ZPP are encrypted.</p>	
Trigger Event	X6	
CPhA Version	70	
Message Model	MSH	Message Header
	ZZZ	Transaction Control
	ZCB	CPhA Segment B - Provider Information
	ZCC	CPhA Segment C - Beneficiary Information
	{[ZPE]}	DUE Response
	{[ZPI]}	Fan-out
	{ ZPX }	Prescription Information

7.27 TRX (X2/X7) – Change Prescription Status

This transaction allows a provider to modify a prescription’s status.

PharmaNet prescriptions may be revoked or stopped using this transaction.

Message Interactions:

Table 57 TRX_X2_REQUEST

Interaction ID	TRX_X2_REQUEST	
Interaction Business Name	[Update Prescription Status - TRX (X2) - Input]	
Interaction Description	This is an inquiry request message.	
Considerations	<p>MSH, ZZZ, ZCA, ZCB segments are required on all requests.</p> <p>Encryption will be used on existing segments that contain Patient identifiers (i.e., ZCC, ZPA).</p> <p>[ZCC.Patient First Name] is partially validated by PharmaNet. First character must match.</p> <p>[ZCC.Patient Last Name] is partially validated by PharmaNet. First two characters must match.</p>	
Developer Guidance	<p>New for bc.pnet.r70</p> <p>If the submitted transaction is a retransmission, the transaction must be identical to the original (i.e., Pharmacy ID, PharmaNet Prescription Identifier, PHN, and Trace Number) except the Response Status (ZZZ.2) field of each ZZZ segment of the inbound message requires an ‘R’.</p>	
Trigger Event	X2	
CPhA Version	70	
Message Model	MSH	Message Header
	ZZZ	Transaction Control
	ZCA	CPhA Segment A - Claims Standard Header Message
	ZCB	CPhA Segment B - Provider Information

Interaction ID	TRX_X2_REQUEST	
	ZCC	CPhA Segment C - Beneficiary Information
	ZPX	Prescription Information

Table 58 TRX_X7_RESPONSE

Interaction ID	TRX_X7_RESPONSE
Interaction Business Name	[Update Prescription Status - TRX (X7) - Output]
Interaction Description	This is the response message.
Considerations	<p>Warning and error messages must be displayed and must comply with the mandatory display standards for the transaction.</p> <p>Test for any of the following:</p> <ul style="list-style-type: none"> • A response status field not equaling: <ul style="list-style-type: none"> ○ '0' for each ZZZ segment returned. ○ 'Y' for each ZCG segment returned. ○ 'Z' for each ZCH segment returned. • A transaction text field not equaling 'blanks' or 0 – Operation Successful' for each ZZZ segment returned. • A response status field in the ZCE segment (if returned) not equal to 'A' or 'V' and the response codes field in the ZCE segment (if returned) is not blank. <p>If no data exists for the patient the transaction will return successfully, but applicable data segments will be absent from the returned message.</p> <p>If a PHN has been merged the new PHN is returned in the [ZCC.Provincial Health Care ID] field in the response.</p> <p>For each RX returned in the response, the current last dispensed information (Last Dispensed Location ID, Last Dispensed DIN PIN, and Last Dispensed Date of Service) is retrieved.</p> <p>If the patient cannot be validated successfully PharmaNet will return an error message to the POS Software and stop further processing of the request.</p> <p>RX Records are returned in last update timestamp descending</p>

Interaction ID	TRX_X7_RESPONSE
	<p>within the following RX ordered groups: non-adaptation/ adaptation, adapted (if exists) (a maximum of 999 can be returned).</p> <p>In total, a maximum of 999 Rx records regardless of grouping can be returned.</p> <p>Rx records are grouped for response in this manner, non-adaptation/ adaptation, and adapted (if exists).</p> <p>Then within each group the records are ordered by timestamp descending.</p>
Developer Guidance	<p>New for bc.pnet.r70:</p> <p>ZCC is encrypted.</p> <p>If the submitted transaction is a retransmission the RX table is checked for an Active row that matches the submitted Location ID, PharmaNet Prescription Identifier, PHN, and Trace Number.</p> <p>If a match is found a successful response is returned using the matching row.</p> <p>If no match is found, processing continues as though the submitted transaction is not a retransmission.</p> <p>If the Rx is not found the ZPX segment is not returned.</p> <p>There is no message flag for a replacement PHN.</p> <p>Receiver must test for a different value in [ZCC.Provincial Health Care ID].</p>
Error Notifications	<p>If the submitted PharmaNet Prescription Identifier is found, but the PHN does not match the PHN on the original prescription, PharmaNet will return the following error notification:</p> <ul style="list-style-type: none"> • 94 'RX is for another patient'. <p>If the submitted PharmaNet Prescription Identifier is not found, PharmaNet will return the following error notification:</p> <ul style="list-style-type: none"> • 97 'RX not found'. <p>If the submitted PharmaNet Prescription Identifier is found, the Prescription Status (i.e., RX Status Code field) must be 'A' (Active) or 'C' (Complete); and if not PharmaNet will return the following error notification:</p>

Interaction ID	TRX_X7_RESPONSE	
	<ul style="list-style-type: none"> • 276 'RX is not eligible to be changed'. <p>If the submitted PharmaNet Prescription Identifier has a Prescription Status (i.e., RX Status Code field) of 'R' (Revoked), and an existing Prescription Status (i.e., RX Status Code field) of 'C' (Complete), PharmaNet will return the following error notification:</p> <ul style="list-style-type: none"> • 276 'RX is not eligible to be changed' <p>If the submitted PharmaNet Prescription Identifier has a Prescription Status (i.e., RX Status Code field) of 'R' (Revoked), and any un-reversed dispenses, PharmaNet will return the following error notification:</p> <ul style="list-style-type: none"> • 278 'Revoked Status not allowed' <p>If the submitted Change Reason is not in the BC PharmaNet Terminology Worksheet, PharmaNet will return the following error notification:</p> <ul style="list-style-type: none"> • 285 'Change Reason is not valid' <p>If the submitted PharmaNet Prescription Identifier is not greater than zero, PharmaNet will return the following error notification:</p> <ul style="list-style-type: none"> • 285 'PharmaNet Prescription Identifier is not valid' 	
Trigger Event	X7	
CPhA Version	70	
Message Model	MSH	Message Header
	ZZZ	Transaction Control
	ZCB	CPhA Segment B - Provider Information
	ZCC	CPhA Segment C - Beneficiary Information
	{{ ZPX }}	Prescription Information
	{{ ZPI }}	Fan-out

7.28 TRX (X3/X8) – Adapt Prescription

This transaction is used by a pharmacist to enter a prescription in PharmaNet that is an adaptation of another prescription.

To resolve a Medication Management Issue (MMI) a pharmacist may choose to adapt an active prescription for a patient.

Message Interactions:

Table 59 TRX_X3_REQUEST

Interaction ID	TRX_X3_REQUEST
Interaction Business Name	[Adapt Prescription - TRX (X3) - Input]
Interaction Description	This is an inquiry request message.
Considerations	<p>MSH, ZZZ, ZCA, ZCB segments are required on all requests.</p> <p>Encryption will be used on existing segments that contain Patient identifiers (i.e., ZCC).</p> <p>[ZCC.Patient First Name] is partially validated by PharmaNet. First character must match.</p> <p>[ZCC.Patient Last Name] is partially validated by PharmaNet. First two characters must match.</p> <p>An adaptation is a renewal or modification of an existing prescription.</p> <p>Adaption example: an original prescription “A” is adapted by a pharmacist.</p> <p>The adaptation is recorded in PharmaNet as prescription “B”. “B” has a pointer to “A” identified in the [ZPX.Original PharmaNet Prescription Identifier] field.</p> <p>The resulting indicator fields for A:</p> <ul style="list-style-type: none"> • [Adapted Indicator] = Y • [Adaptation Indicator] = N <p>The resulting indicator fields for B:</p> <ul style="list-style-type: none"> • [Adapted Indicator] = N • [Adaptation Indicator] = Y

Interaction ID	TRX_X3_REQUEST
	<p>In summary, “A” is adapted, and “B” is the adaptation.</p> <p>Transaction includes a DUE request and will return results for the new (adapted) Rx’s DIN.</p>
Developer Guidance	<p>New for bc.pnet.r70:</p> <p>Each data element in the request transaction is checked to determine if the data meets data element format and control requirements.</p> <p>Basic editing to ensure numeric, alpha, alphanumeric, mandatory field requirement and in some instances value checking of the fields in a transaction is performed.</p> <p>The fields in the input segments are edited to ensure that they conform to the following rules:</p> <ul style="list-style-type: none"> • PharmaNet Prescription Identifier <ul style="list-style-type: none"> ○ Must be greater than zero. • Date of Prescription <ul style="list-style-type: none"> ○ Must be less than or equal to ZCB Provider Transaction Date. ○ Must be less than or equal to the Patient’s Date of Death else a warning is returned. ○ Must be greater than or equal to the original prescription date. • Device Indicator <ul style="list-style-type: none"> ○ Must be equal to ‘N’. ○ The DRUGCLINICAL.PHARMACEUTICAL_IND must be ‘Y’ for the DIN PIN in the Medication Value Set. • Total Days Supply <ul style="list-style-type: none"> ○ Must be greater than zero. • Total Quantity <ul style="list-style-type: none"> ○ Must be greater than zero. • Do Not Substitute Indicator (if spaces default = ‘N’) <ul style="list-style-type: none"> ○ If submitted must be equal to ‘Y’ or ‘N’.

Interaction ID	TRX_X3_REQUEST
	<ul style="list-style-type: none"> • Do Not Adapt Indicator (if spaces default = 'N') <ul style="list-style-type: none"> ○ If submitted must be equal to 'Y' or 'N'. • Refill Repeat Authorizations <ul style="list-style-type: none"> ○ Must be greater than or equal to zero. • Route Code <ul style="list-style-type: none"> ○ If submitted must be a valid code in the ROUTECODE list. ○ Must be submitted if Compound Instructions are submitted. • Frequency <ul style="list-style-type: none"> ○ Must be greater than zero. • Frequency Code <ul style="list-style-type: none"> ○ Must be a valid code in the FREQUENCYCD list. • Dispense Interval <ul style="list-style-type: none"> ○ If submitted must be greater than or equal to zero. • Maximum Dispense Quantity <ul style="list-style-type: none"> ○ If submitted must be greater than zero or equal zero. • Dose and Dose Units <ul style="list-style-type: none"> ○ If Dose is submitted then Dose Units must be entered and vice versa. • Dose Units <ul style="list-style-type: none"> ○ If submitted it must exist in the DOSEUNITCD list. • Dose <ul style="list-style-type: none"> ○ If submitted it must be greater than zero. ○ Must be submitted if Compound Instructions are submitted. • Indication Code

Interaction ID	TRX_X3_REQUEST
	<ul style="list-style-type: none"> ○ If Indication Code submitted then the Indication Code must be from the INDICATIONCD list. ● DIN PIN <ul style="list-style-type: none"> ○ Must exist in the Drug Clinical table and must be effective based on the Provider Transaction Date. ● Dispense Start Date <ul style="list-style-type: none"> ○ Must be greater than or equal to Date of Prescription. ○ If the Expiry Date is submitted, the Dispense Start Date must be less than or equal to the Expiry Date. ● Prescription Expiry Date (i.e., RX Expiry Date field) <ul style="list-style-type: none"> ○ If submitted, must be greater than the Date of Prescription. ○ If the Prescription Expiry Date is not submitted the RX_EXPIRY_DT is set to 3000/01/01. ● Office Use Indicator (if spaces default = 'N') <ul style="list-style-type: none"> ○ If submitted must be equal to a 'N'. ● DUE Indicator <ul style="list-style-type: none"> ○ Must be equal to a "Y" or 'N'. ● Trial Eligibility Indicator (if spaces default = 'N') <ul style="list-style-type: none"> ○ If submitted must be equal to a 'Y' or 'N'. ● Compliance Packaging Indicator (if spaces default = 'N') <ul style="list-style-type: none"> ○ If submitted must be equal to a 'Y' or 'N'. ● Directions <ul style="list-style-type: none"> ○ Must not be equal to spaces. ● Drug Device Name <ul style="list-style-type: none"> ○ Must not be equal to spaces.

Interaction ID	TRX_X3_REQUEST
	<ul style="list-style-type: none"> • Patient Consent Indicator <ul style="list-style-type: none"> ○ Must be equal to ‘Y’ or space. • Intervention and Exception Codes <ul style="list-style-type: none"> ○ Must exist in the INTERVENTION CODE list if submitted. • Local Prescription Identifier <ul style="list-style-type: none"> ○ Must be greater than zero. • Compound Ingredients and Compound Instructions <ul style="list-style-type: none"> ○ If one is entered the other must also be present. • If any edits fails, the transaction is rejected, and an error returned. <p>At least one MMI Codes (ZPX.2.46) and one Clinical Service code identified with an Adaptation Indicator = Y must be submitted.</p> <p>CS/MMI message set field is alphanumeric with a maximum length 56.</p> <p>The message set field is broken down into 7 fixed length fields of size 8.</p> <p>The code for each fixed length field is left justified with any unused character positions being set to spaces.</p> <p>Any unused fixed length fields are not populated (e.g., 1 code – 8 characters used, 2 codes – 16 characters used, 3 codes – 24 characters used).</p> <p>Do not include extra spaces to pad out the final field value in the list of CS or MMI codes if multiple codes are being submitted.</p> <p>For example:</p> <p><u>INPUT</u></p> <pre>ZPX ZPX1^N^P1^XYCVDGREAT^^^^PHARMACIST^^113^1240 9^12409^20200827^^20200827^2041294^^AMOXICILLIN^50 0^5^1^^50^^250^99^BID^250^TAB^1^^N^N^N^N^N^N^N^N^ N^TAKE 1 A DAY^^^^MMI1 MMI2 MMI3 MMI4^CS01 CS02 CS03 CS04^^^^^^^^^^1115^</pre>

Interaction ID	TRX_X3_REQUEST
	<p>If the submitted transaction is a retransmission, the transaction must be identical to the original (i.e., Pharmacy ID, PharmaNet Prescription Identifier, PHN, and Trace Number, DIN/PIN and RX Date of incoming transaction) except the Response Status (ZZZ.2) field of each ZZZ segment of the inbound message requires an 'R'.</p> <p>If no match is found, the incoming transaction is processed as if it is not a retransmission.</p> <p>Duplicate RX Check:</p> <p>The incoming prescription is compared to historical prescriptions that are Active (i.e., have an RX_STATUS_CD of 'A') and have the DIN present (cannot be equal to zeroes), to determine if there are potential duplicate prescriptions. A warning is returned if any historical prescriptions match the duplicate criteria and all duplicate RX records are returned in the response.</p> <p>Duplicate RX Criteria:</p> <p>Same Prescriber</p> <p>An incoming RX is defined as a potential duplicate for the same prescriber when the following conditions are met:</p> <ul style="list-style-type: none"> • The PHN of the retrieved historical RX is the same as PHN on incoming transaction. • The Prescriber ID and Prescriber ID Reference of retrieved historical RX is the same as the incoming transaction. • RX Date of the retrieved existing RX row is: <ul style="list-style-type: none"> ○ less than or equal today's date; and ○ greater than or equal the incoming transaction's Date of Prescription minus 3_DAYS. • The submitted DIN/PIN matches the DIN/PIN of the historical RX as described under the Duplicate RX Check. <p>If a match is found:</p> <ul style="list-style-type: none"> • Warning 96 'RX exists' is returned as the historical

Interaction ID	TRX_X3_REQUEST	
	<p>prescriber is the same.</p> <p>Different Prescriber</p> <p>An incoming RX is defined as a potential duplicate for a different prescriber when the following conditions are met:</p> <ul style="list-style-type: none"> • The PHN of the retrieved historical RX is the same as PHN on incoming transaction • The Prescriber ID/Prescriber ID Reference of retrieved historical RX is not the same as the incoming transaction • RX Date of the retrieved existing RX row is less than or equal today's date and greater than or equal the incoming transaction's Date of Prescription minus 3_DAYS • The submitted DIN/PIN matches the DIN/PIN of the historical RX as described under Duplicate Drug Check above <p>If a match is found</p> <ul style="list-style-type: none"> • Warning 95 'RX exists with different data' is returned as the historical prescriber is different. 	
Trigger Event	X3	
CPhA Version	70	
Message Model	MSH	Message Header
	ZZZ	Transaction Control
	ZCA	CPhA Segment A - Claims Standard Header Message
	ZCB	CPhA Segment B - Provider Information
	ZCC	Beneficiary Information
	ZPX	Prescription Information

Table 60 TRX_X8_RESPONSE

Interaction ID	TRX_X8_RESPONSE
----------------	-----------------

Interaction ID	TRX_X8_RESPONSE
Interaction Business Name	[Adapt Prescription - TRX (X8) - Output]
Interaction Description	PharmaNet will return the new adapted prescription and the original prescription that was adapted.
Considerations	<p>Warning and error messages must be displayed and must comply with the mandatory display standards for the transaction.</p> <p>Test for any of the following:</p> <ul style="list-style-type: none"> • A response status field not equaling: <ul style="list-style-type: none"> ○ 'O' for each ZZZ segment returned. ○ 'Y' for each ZCG segment returned. ○ 'Z' for each ZCH segment returned. • A transaction text field not equaling 'blanks' or 0 – Operation Successful' for each ZZZ segment returned. • A response status field in the ZCE segment (if returned) not equal to 'A' or 'V' and the response codes field in the ZCE segment (if returned) is not blank. <p>The ZPE segment (containing the ZPB3 sub-segments) is only returned if the DUE process produces a warning.</p> <p>If a warning is produced, the ZPE segment and the ZPB3 sub-segments will exist and be populated with the appropriate fields.</p> <p>The ZPI segment is returned only when a fan-out message exists.</p> <p>If a PHN has been merged the new PHN is returned in the ZCC Provincial Health Care ID in the response.</p>
Developer Guidance	<p>TRX X8 returns two ZPX segments:</p> <ul style="list-style-type: none"> • one for the updated original prescription where Prescription Status (i.e., RX Status Code field) = O (Obsolete) and • another ZPX segment for the new adaptation prescription where Prescription Status (i.e., RX Status Code field) = A (Active).

Interaction ID	TRX_X8_RESPONSE
	<p>New “Active” prescription:</p> <ul style="list-style-type: none"> • Most fields will correspond with the whatever was included in the TRX X3 request message (if it was included it will be returned); • Quantity Dispensed and Reason Code will be empty because there will be no dispense against this RX row; • Adapted Indicator = N; • Adaptation Indicator = Y. <p>Old “Obsolete” prescription:</p> <ul style="list-style-type: none"> • Will return what is on the PharmaNet RX record (If there is a value, it will be returned); • RX Status Code = O; • Quantity Dispensed and Reason Code will be returned if there are values on the RX table for them (if there has been a dispense or change on this prescription); • Last Dispensed Location ID/DINPIN/Date of Service will be returned if there has been a prior dispense; • Adapted Indicator = Y; • Adaptation Indicator = N. <p>New for bc.PharmaNet.r70:</p> <p>PharmaNet will return an error if an unrevoked prescription record does not exist for the patient with the specified PharmaNet Prescription Identifier.</p> <p>An "Obsolete" prescription may only be adapted if it was adapted previously.</p> <p>Otherwise (i.e. for a first adaptation), the prescription must have a status of "Active" or "Complete".</p> <p>If the new adaptation is identified by PharmaNet as a duplicate of one or more existing prescriptions, a warning message and the duplicate prescription records (in ZPX segments) will be returned.</p> <p>A Maximum of 999 can be returned.</p> <p>See ZPX segment for more information about sort orders.</p>

Interaction ID	TRX_X8_RESPONSE	
Trigger Event	X8	
CPhA Version	70	
Message Model	MSH	Message Header
	ZCB	Provider Information
	ZZZ	Transaction Control
	ZCC	Beneficiary Information
	{ ZPX }	Prescription Information
	{[ZPE]}	DUE Response
	{[ZPI]}	Fan-Out

7.29 TRX (X4/X9) – Retrieve Prescriber Prescription

The Retrieve Prescriber Prescription transaction enables the retrieval of all prescription records recorded by a single prescriber.

Message Interactions:

Table 61 TRX_X4_REQUEST

Interaction ID	TRX_X4_REQUEST
Interaction Business Name	[Retrieve Prescriber Prescription - TRX (X4) - Input]
Interaction Description	This is an inquiry request message.
Considerations	<p>Patient keyword validation is not performed with this transaction.</p> <p>The ZCC (Beneficiary Information) segment is not supported for this transaction.</p> <p>The request may return records from many different PHN's in one request.</p> <p>Only the most current Active instance of each Rx that meets the search criteria is returned to the requestor.</p>
Developer Guidance	<p>New for bc.PharmaNet.r70:</p> <p>The input fields in the ZPR segment are validated to ensure that they conform to the following rules:</p> <ul style="list-style-type: none"> • Prescriber ID/ID Reference <ul style="list-style-type: none"> ○ A row must exist for the Prescriber in the PRACTITIONER table • Location ID <ul style="list-style-type: none"> ○ A valid Location ID must be submitted from the assignees Location ID or the retrieved prescription record • Prescription Status (i.e., RX Status Code field) <ul style="list-style-type: none"> ○ If submitted must exist in the RXSTATUSCD table • Date of Prescription <ul style="list-style-type: none"> ○ If submitted must be valid

Interaction ID	TRX_X4_REQUEST
	<ul style="list-style-type: none"> ○ Dispense Indicator ○ If submitted must be 'Y', or 'N' ● Adapted Indicator <ul style="list-style-type: none"> ○ If submitted must be 'Y', or 'N' ● Adaptation Indicator <ul style="list-style-type: none"> ○ If submitted must be 'Y', or 'N' ● Veterinary Indicator <ul style="list-style-type: none"> ○ If submitted must be 'Y', or 'N' ● Last Updated Timestamp <ul style="list-style-type: none"> ○ If submitted must be valid <p>If any error is found by the Edit/Validation Routines validation is stopped and an error is returned.</p> <p>A combination of [ZPR.Date of Prescription] and [ZPR.Last Update Timestamp] can be used in the query information in the message.</p> <ul style="list-style-type: none"> ● If [ZPR.Date of Prescription] is submitted, then only rows matching the Prescription Date are returned. ● If [ZPR.Last Update Timestamp] is submitted, then only rows with the Record Create Timestamp or Last Update Timestamp that are equal to or greater than the submitted Last Update Timestamp are returned. <p>PharmaNet has a default upper limit (999) for the number of RX rows that can be returned.</p> <p>If the maximum number of rows are exceeded an Error 106 (Too Many Prescriptions Found) is returned and no prescriptions are returned.</p>
Trigger Event	X4
CPhA Version	70

Interaction ID	TRX_X4_REQUEST	
Message Model	MSH	Message Header
	ZZZ	Transaction Control
	ZCA	Claims Standard Header Message
	ZCB	Provider Information
	ZPR	Prescription Information Request

Table 62 TRX_X9_RESPONSE

Interaction ID	TRX_X9_RESPONSE
Interaction Business Name	[Retrieve Prescriber Prescription - TRX (X9) - Output]
Interaction Description	This is the response message.
Considerations	<p>Warning and error messages must be displayed and must comply with the mandatory display standards for the transaction.</p> <p>Test for any of the following:</p> <ul style="list-style-type: none"> • A response status field not equaling: <ul style="list-style-type: none"> ○ '0' for each ZZZ segment returned. ○ 'Y' for each ZCG segment returned. ○ 'Z' for each ZCH segment returned. • A transaction text field not equaling 'blanks' or 0 – Operation Successful' for each ZZZ segment returned. • A response status field in the ZCE segment (if returned) not equal to 'A' or 'V' and the response codes field in the ZCE segment (if returned) is not blank. <p>If no data is found the transaction will return successfully, but applicable data segments will be absent from the returned message.</p> <p>When one or more adaptation prescription records are returned the original prescription record will also be returned.</p> <p>The ZPP response message segment containing the patient</p>

Interaction ID	TRX_X9_RESPONSE	
	<p>identifier and associated prescription information is returned encrypted.</p> <p>The ZPI segment is returned only when a fan-out message exists for the submitting location.</p>	
Developer Guidance	<p>New for bc.PharmaNet.r70</p> <p>Records are returned sorted in the following order:</p> <ul style="list-style-type: none"> • PHN (ascending) • RX_DT (descending) • Record Create Timestamp (descending) <p>For each RX returned in the response, the current last dispensed information (Last Dispensed Location ID, Last Dispensed DIN PIN, and Last Dispensed Date of Service) is retrieved from the patient’s medication history based on system date and is selected based on the following criteria:</p> <ul style="list-style-type: none"> • RX_ID matches the RX_ID of the RX • RX_STAT is ‘F’ (Filled), ‘N’ (Not Filled), or ‘D’ (Discontinued) 	
Trigger Event	X9	
CPhA Version	70	
Message Model	MSH	Message Header
	ZZZ	Transaction Control
	ZCB	Provider Information
	{{ZPP}}	Patient and Prescription Information
	{{ZPI}}	Fan-Out