

Overview of Integrated Child & Youth Teams



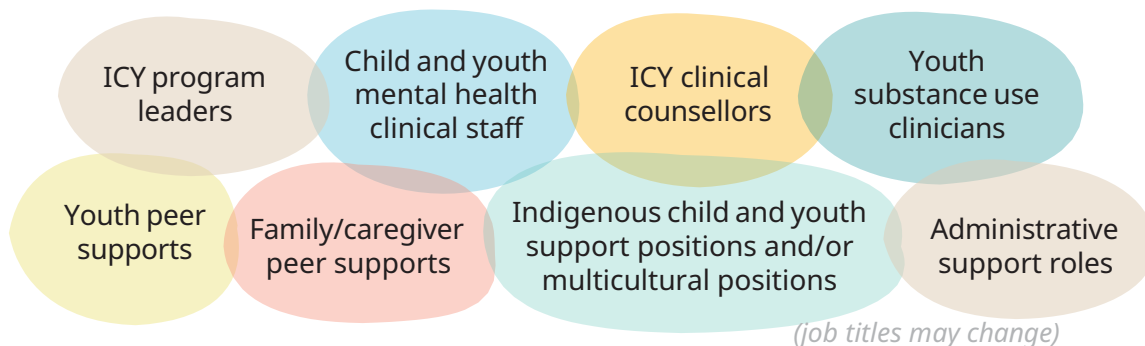
1 What are ICY Teams?

Integrated Child and Youth (ICY) teams are part of *A Pathway to Hope* – the provincial strategy for improved mental health and substance use care in B.C.

2 How are they different?

- Wraparound mental health and substance use services and supports for children and youth delivered by multidisciplinary teams.
- Families and caregivers do not have to navigate services and supports on their own - service providers work to ensure smooth transitions.
- Children and youth from early years to age 19 are provided supports by an ICY team within a school district.
- Reduced need for children and youth to re-tell their story - team members share information.
- Services are based on the strengths and needs of the individual and their caregivers.

3 Who are ICY Team members?



Where positions already exist in the community, they are assigned to the teams, as appropriate.

Additional team members identified by the child or youth may be included, such as cultural or religious/spiritual support, family, friends, family physicians, social workers, coaches, support people, Elders, other counsellors or professionals (not additional funding).

4 Services & Referrals

ICY teams receive referrals from other service providers such as:

- early years services
- school staff
- primary care
- mental health and substance use services
- Foundry centres
- Indigenous-led organizations

The teams work towards culturally safer, distinctions-based, and child-, youth-, family-, and community-centred approaches, engaging and communicating with Inuit, First Nations and Métis organizations and working towards meaningful and reciprocal relationships.

Approaches are gender, diversity and trauma informed. Wherever possible, services for Inuit, First Nations and Métis children and youth are offered by Inuit, First Nations and Métis providers, and additional care members can be invited.

The multi-disciplinary approach expands the diversity of mental health supports so that children and youth may access services when they are needed.

5 ICY Teams Locations

ICY Teams operate with school districts' boundaries including those attending First Nations operated schools, independent schools, alternative school environments or those not in school.

Children and youth connect to ICY teams based on geographic location if they are new to services.

ICY teams will meet children, youth and families in outbound services as well as regular care settings.

Phase 1 communities:

- SD 82 Coast Mountains (Terrace/Hazelton)
- SD 71 Comox Valley
- SD 53 Okanagan-Similkameen (Oliver/Keremeos)
- SD 42 Maple Ridge-Pitt Meadows
- SD 38 Richmond

Phase 2 communities:

- SD 78 Fraser-Cascade (Hope, Agassiz-Harrison)
- SD 20 Kootenay-Columbia (Castlegar/Trail)
- SD 75 Mission
- SD 68 Nanaimo-Ladysmith
- SD 83 North Okanagan-Shuswap (Salmon Arm)
- SD 70 Pacific Rim (Port Alberni)
- SD 47 qathet (Powell River)

Phase 3 communities:

- SD 49 Central Coast (Bella Coola – Bella Bella)
- SD 79 Cowichan Valley
- SD 37 Delta
- SD 74 Gold Trail (Lytton, Cache Creek, Lillooet)
- SD 58 Nicola-Similkameen (Princeton, Merritt)
- SD 59 Peace River South (Dawson Creek, Chetwynd)
- SD 69 Qualicum
- SD 36 Surrey (phased approach)