

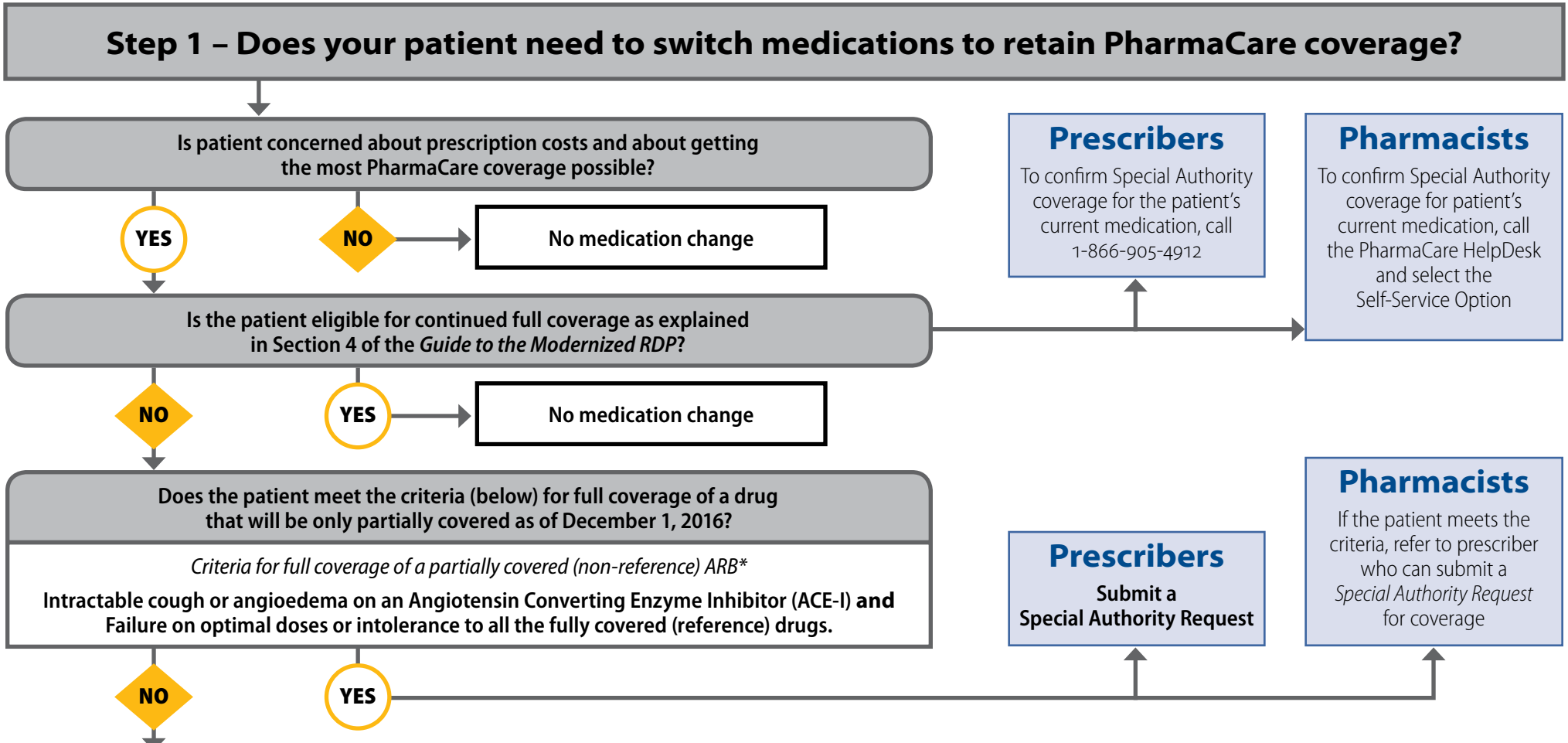
Modernized Reference Drug Program Angiotensin Receptor Blockers (ARBs)



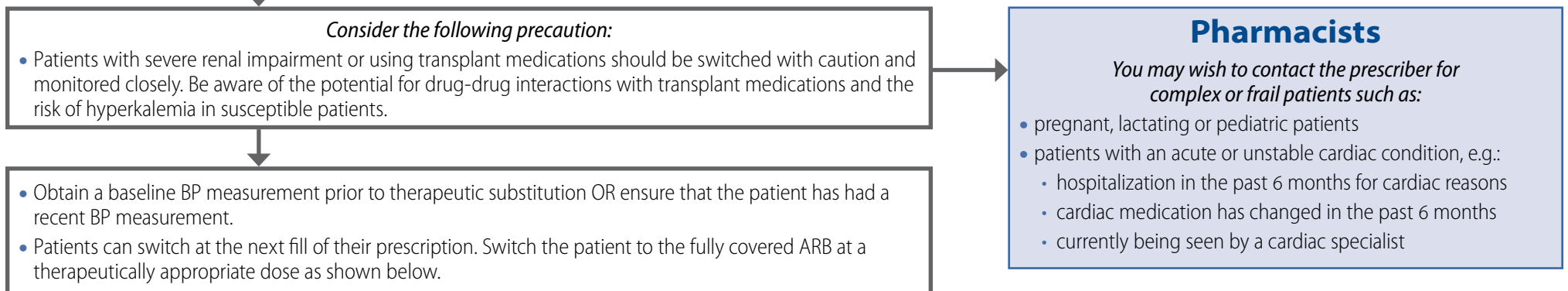
Please note: Special Authority approval is required for access to coverage of any ARB. Additional Special Authority approval is required for access to full coverage of a partially covered ARB.

Fully Covered (Reference Drugs)	Partially Covered (Non-Reference Drugs)
<ul style="list-style-type: none"> • Candesartan with/without hydrochlorothiazide (HCTZ) • Losartan with/without HCTZ 	<ul style="list-style-type: none"> • Eprosartan with/without HCTZ • Olmesartan with/without HCTZ • Telmisartan with/without HCTZ or Amlodipine • Valsartan with/without HCTZ

Information provided is not intended as a substitute for professional judgement.



Step 2 – Making the switch



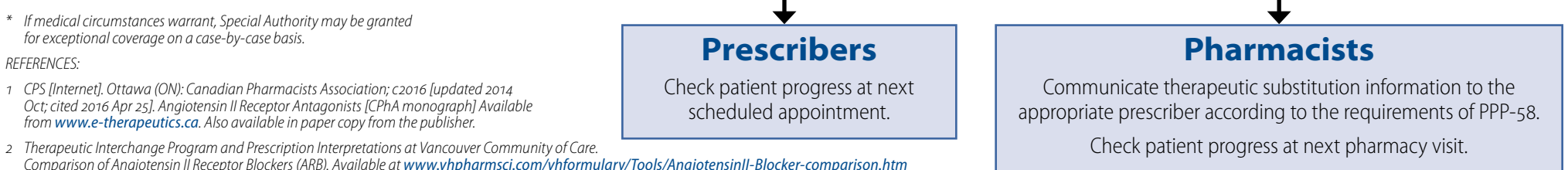
Recommended Doses of ARBs ¹						
	Hypertension	Heart Failure	Risk Reduction Post-MI in Select Individuals*	Risk Reduction of CV Events in Select Individuals*	Adjustments-Renal	Adjustments-Hepatic
• Candesartan	• Initial: 8 mg daily • Max: 32 mg daily	• Initial: 4 mg daily • Target: 32 mg daily			• Moderate to severe impairment or dialysis: lower initial dose (4 mg daily)	• Severe impairment: lower initial dose (4 mg daily)
• Losartan	• Initial: 25 mg daily • Max: 100 mg daily				• None	• 25 mg daily initial dose
• Telmisartan	• Initial: 40 mg daily • Max: 80 mg daily			• 80 mg daily	• None	• 40 mg daily initial dose • Severe impairment: Use not recommended
• Valsartan	• Initial: 80 mg daily • Max: 320 mg daily	• Initial: 40 mg BID • Target: 80-160 mg BID	• 20 mg BID, titrated up to 160 mg BID as tolerated		• None	• Mild to moderate impairment: max 80 mg daily • Severe impairment: not recommended

* Refer to product monograph for details. MI: Myocardial Infarction CV: cardiovascular

Approximate daily equivalent doses of ARBs ¹⁻³		
Drug	Approximate Equivalent Dose	Maximum Daily Dose
• Candesartan	8 mg	32 mg
• Losartan	50 mg	100 mg
• Telmisartan	40 mg	80 mg
• Valsartan	80 mg	320 mg
• Eprosartan	600 mg	600 mg
• Irbesartan	150 mg	300 mg
• Olmesartan	20 mg	40 mg

Comparable doses are approximate and are recommended doses for hypertension. Note: When switching products consider indication, liver function, renal function, other medical conditions such as HF or hypertension and allergies. Monitor blood pressure, potassium and renal function.

Monitor blood pressure, potassium, and renal function. Inform the patient of the changes made, of any self-monitoring required, and of plans for follow-up.



* If medical circumstances warrant, Special Authority may be granted for exceptional coverage on a case-by-case basis.

REFERENCES:

- 1 CPS [Internet]. Ottawa (ON): Canadian Pharmacists Association; c2016 [updated 2014 Oct; cited 2016 Apr 25]. Angiotensin II Receptor Antagonists [CPhA monograph]. Available from www.e-therapeutics.ca. Also available in paper copy from the publisher.
- 2 Therapeutic Interchange Program and Prescription Interpretations at Vancouver Community of Care. Comparison of Angiotensin II Receptor Blockers (ARB). Available at www.vhpharmsci.com/vhformulary/Tools/AngiotensinII-Blocker-comparison.htm
- 3 Pharmacist's Letter/Prescriber's Letter. Angiotensin Receptor Blocker (ARB) antihypertensive dose comparison. Aug 2009 (full update Feb 2012); 25: 250801.