

B.C. Ebola Virus Disease Patient Process Map

British Columbia Ebola Virus Disease Patient Process Map

The 2014/15 outbreak of Ebola Virus Disease in West Africa is the largest since the virus was discovered in 1976. The British Columbia Ministry of Health and its partners collaborated to ensure that the system would be ready in the unlikely event of a case of Ebola in the province. The attached Ebola Patient Process Map walks through each step of the potential care pathway, providing links to the relevant policies and guidelines.

Ebola Virus Disease (EVD) is a very serious communicable disease with a mortality rate of over fifty percent.

The 2014/15 outbreak of EVD in West Africa is the largest since the virus was discovered in 1976. Many Canadian health care workers have travelled to West Africa to support international efforts to end the outbreak. The probability of someone returning to BC with Ebola is very low, but it is imperative that the health system is prepared to respond.

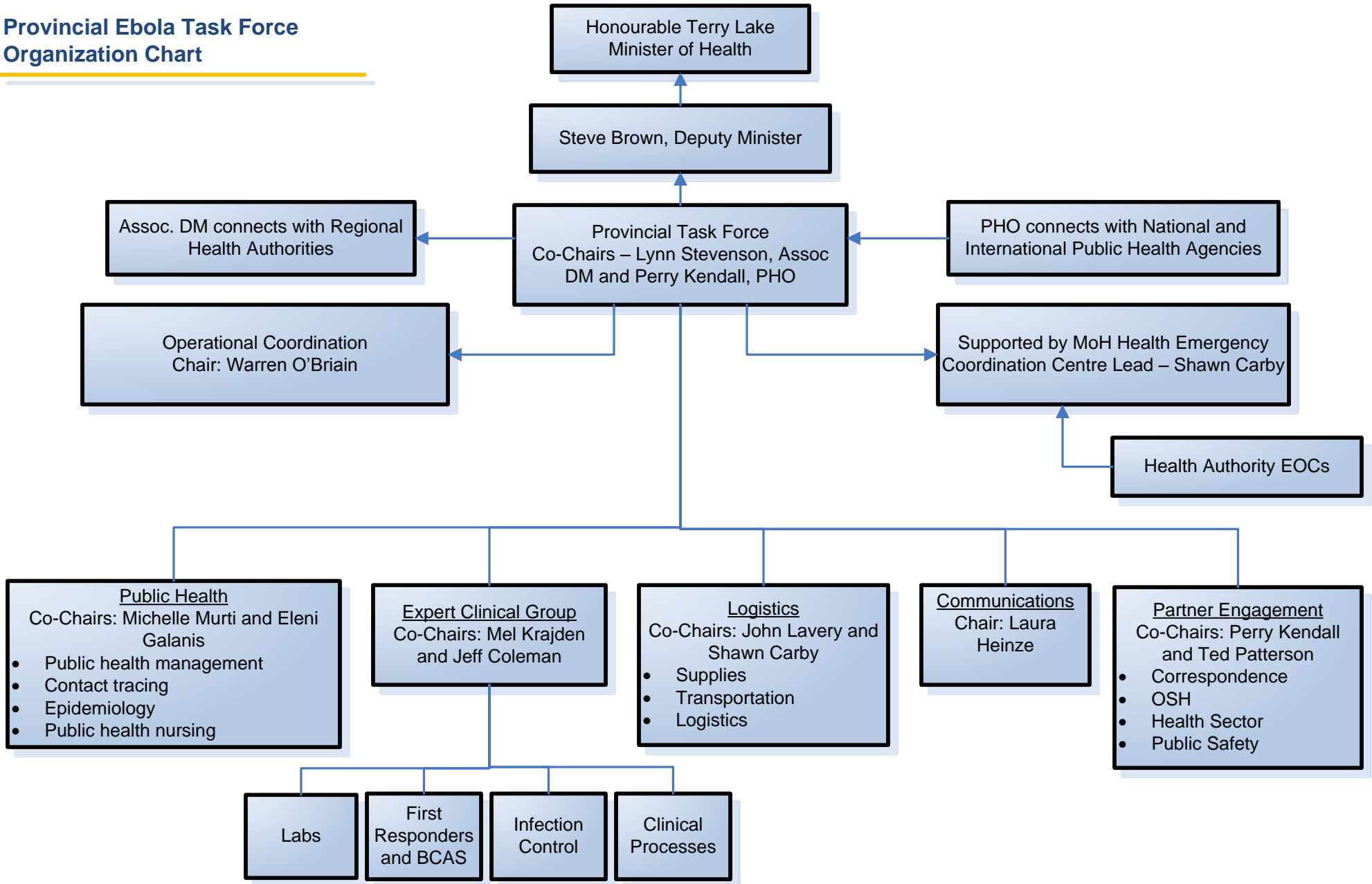
Building on the province's experiences in managing SARS in 2003 and pandemic influenza in 2009, the British Columbia Ministry of Health and its partners undertook an extensive Ebola preparedness initiative. In October 2014, the Ministry of Health created a co-ordinating task force with representatives from across the health system, co-chaired by Provincial Health Officer Perry Kendall and Ministry of Health Associate Deputy Minister Lynn Stevenson.

Task Force working groups brought experts together from across the health system - from acute care to public health, from infection control to emergency services, and from primary care to veterinary and laboratory medicine – to establish a comprehensive suite of evidence-based policies, guidelines and algorithms that address the full patient cycle for an Ebola case, including:

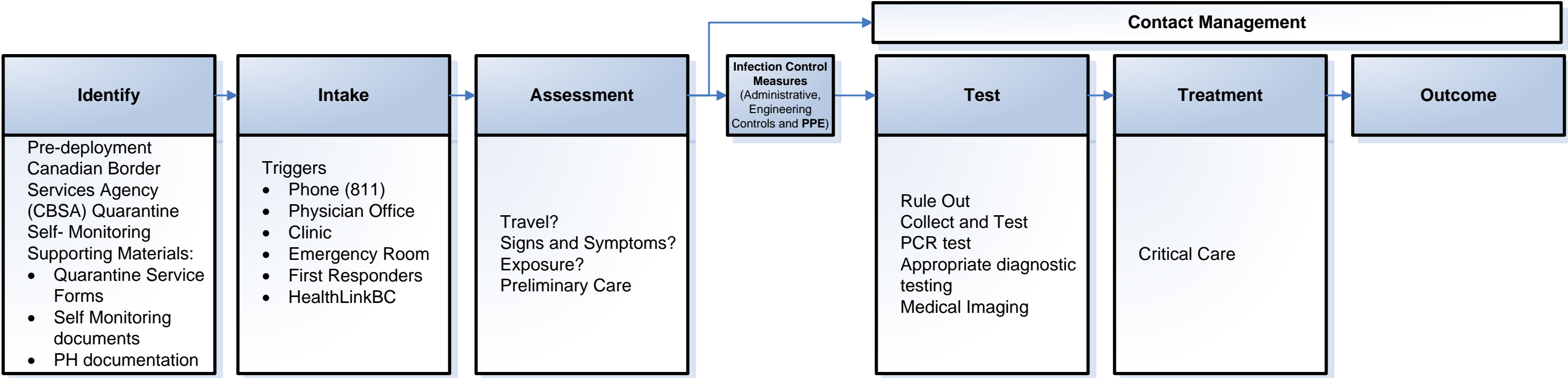
- identifying a potential case;
- intake and assessment;
- infection control;
- further assessment and initial care;
- testing;
- treatment; and
- outcome.

This will be updated as new information becomes available. Please contact the following for questions related to the Patient Process Map or any of the linked resources: Gina.McGowan@gov.bc.ca.

Provincial Ebola Task Force Organization Chart



Patient Process Map



Glossary

BCAS – BC Ambulance Service

BCCH – BC Children’s Hospital

BCEHS – BC Emergency Health Services

CBSA – Canadian Border Service Agency

ERAP – Emergency Response Assistance Plan (for transporting dangerous goods)

EVD – Ebola Virus Disease

EVS – Environmental Services

MHO – Medical Health Officer

MHO Alg – Medical Health Officer Algorithm

PAPRS – Powered Air Purifying Respirator

PHO – Provincial Health Officer

PPE – Personal Protective Equipment

PTN – Patient Transfer Network

PUI – Person Under Investigation

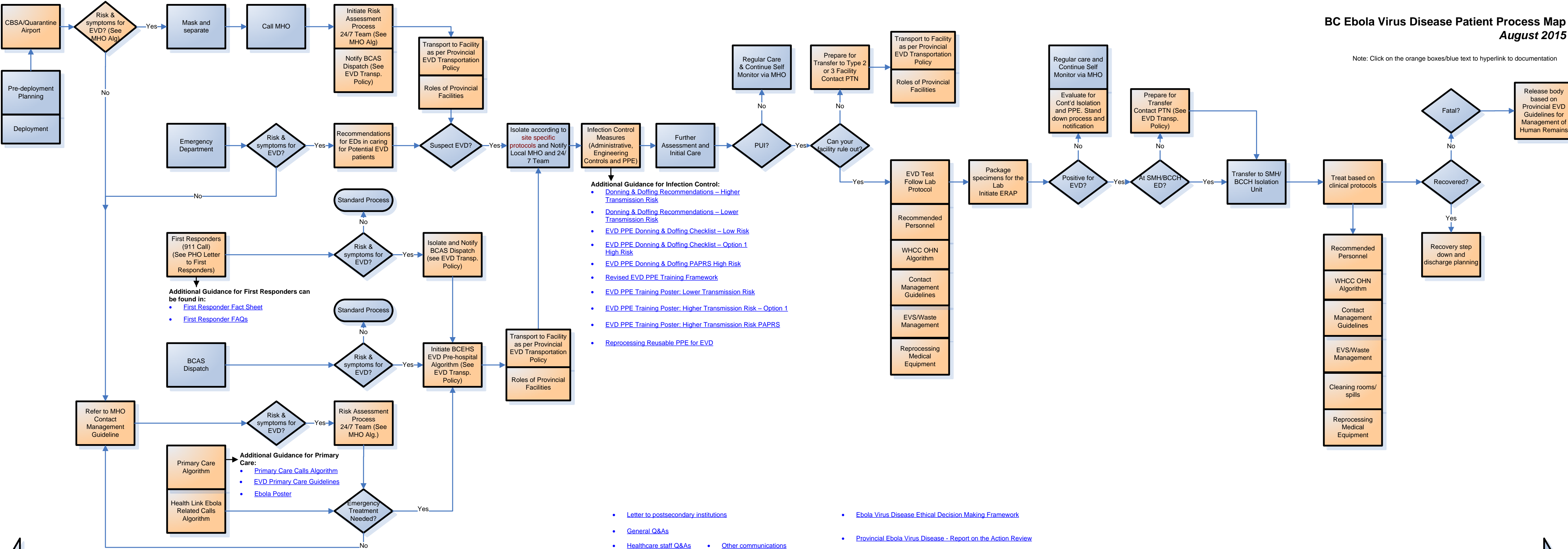
SMH – Surrey Memorial Hospital

WHCC OHN – Workplace Health Call Centre Occupational Health Nursing

BC Ebola Virus Disease Patient Process Map

August 2015

Note: Click on the orange boxes/blue text to hyperlink to documentation



- Additional Guidance for Infection Control:**
- [Donning & Doffing Recommendations – Higher Transmission Risk](#)
 - [Donning & Doffing Recommendations – Lower Transmission Risk](#)
 - [EVD PPE Donning & Doffing Checklist – Low Risk](#)
 - [EVD PPE Donning & Doffing Checklist – Option 1 High Risk](#)
 - [EVD PPE Donning & Doffing PAPRS High Risk](#)
 - [Revised EVD PPE Training Framework](#)
 - [EVD PPE Training Poster: Lower Transmission Risk](#)
 - [EVD PPE Training Poster: Higher Transmission Risk – Option 1](#)
 - [EVD PPE Training Poster: Higher Transmission Risk PAPRS](#)
 - [Reprocessing Reusable PPE for EVD](#)

- [Letter to postsecondary institutions](#)
- [Ebola Virus Disease Ethical Decision Making Framework](#)
- [General Q&As](#)
- [Provincial Ebola Virus Disease - Report on the Action Review](#)
- [Healthcare staff Q&As](#)
- [Other communications](#)

Communications