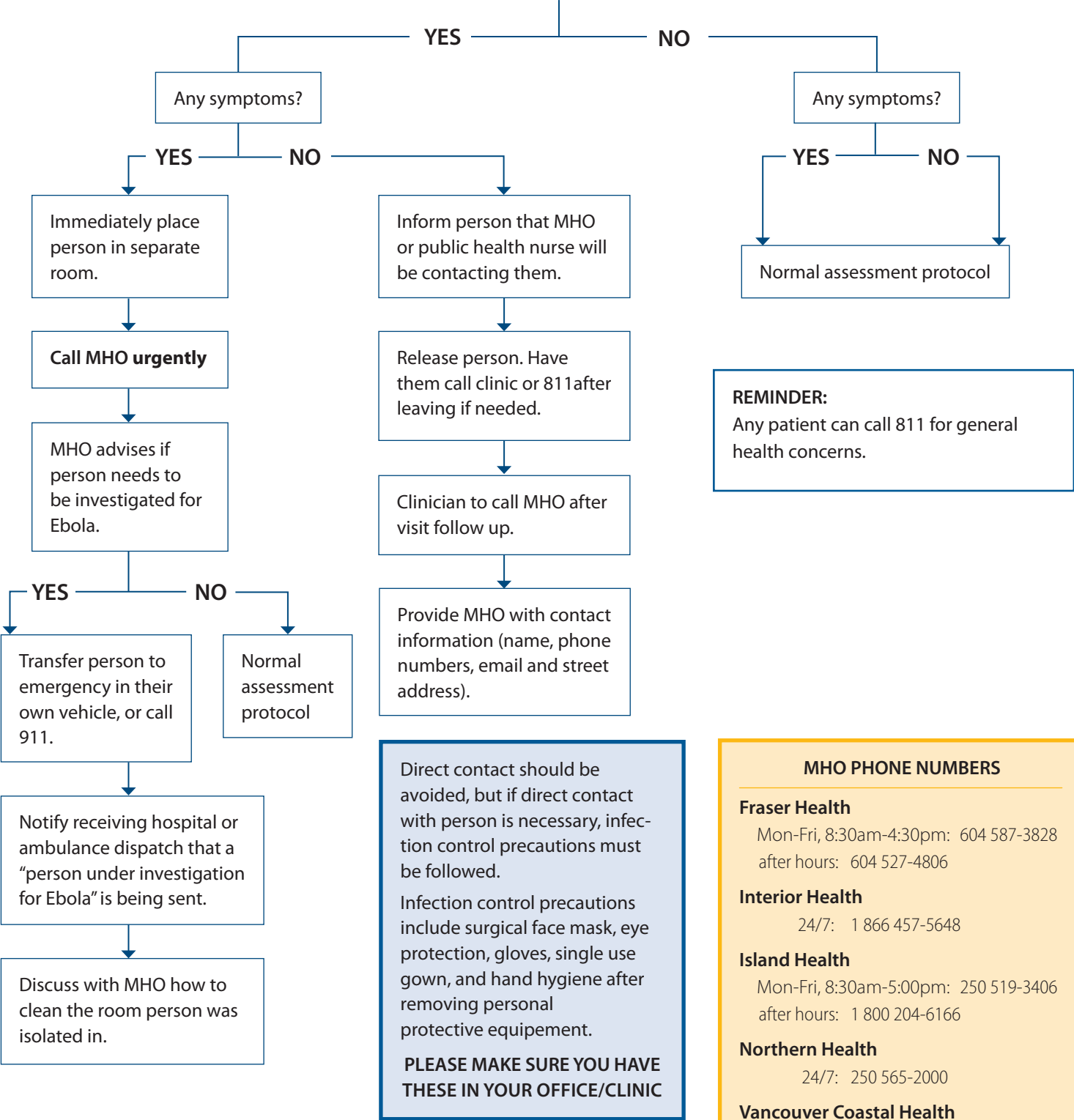


# SCENARIO B: Person arrives at a primary health care centre, concerned about or exposed to Ebola

Effective: January 22, 2020

MHO = medical health officer

Travelled to **a region with Ebola cases** in the last 21 days or potentially exposed to someone with Ebola.



**MHO PHONE NUMBERS**

**Fraser Health**  
 Mon-Fri, 8:30am-4:30pm: 604 587-3828  
 after hours: 604 527-4806

**Interior Health**  
 24/7: 1 866 457-5648

**Island Health**  
 Mon-Fri, 8:30am-5:00pm: 250 519-3406  
 after hours: 1 800 204-6166

**Northern Health**  
 24/7: 250 565-2000

**Vancouver Coastal Health**  
 Mon-Fri, 8:30am-5:00pm: 604 675-3900  
 after hours: 604 527-4893