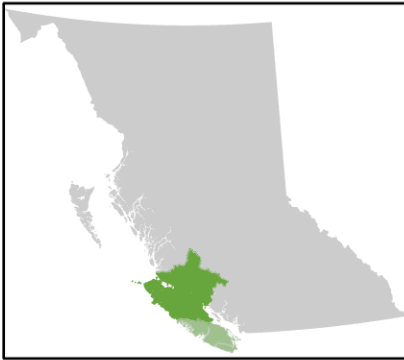


Health Service Delivery Area (HSDA)

43 North Vancouver Island

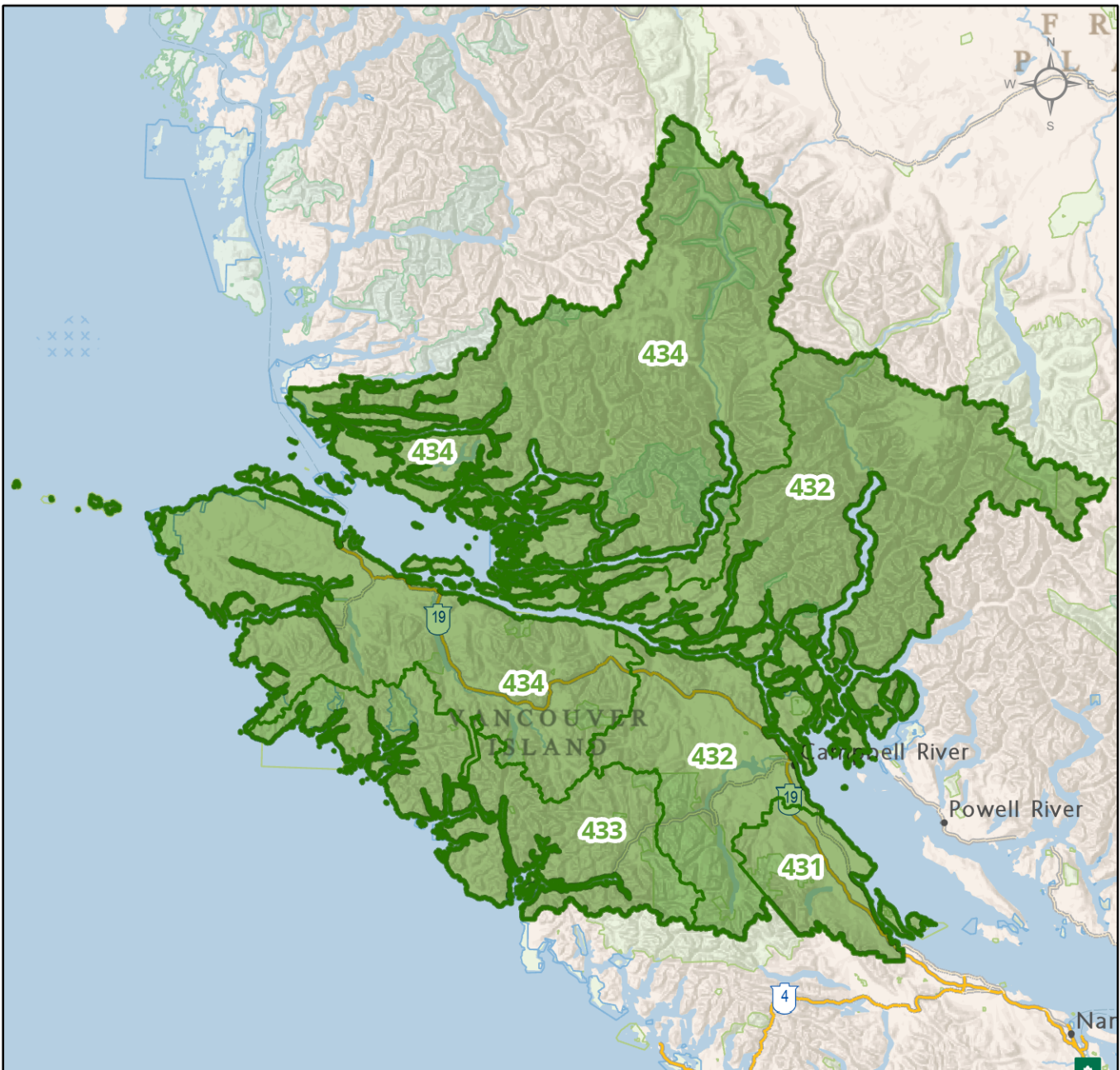


Ministry of Health



Local Health Area (LHA)

- 431 Comox Valley
- 432 Greater Campbell River
- 433 Vancouver Island West
- 434 Vancouver Island North



1:2,175,000

Ministry of Health, 2023
Health Boundaries Version 2022

The B.C. Ministry of Health developed the Community Health Service Area (CHSA) and Local Health Area (LHA) geographic boundaries for administrative purposes to inform health system planning and service delivery. The names and areas represented by CHSAs and LHAs are subject to change at the discretion of the Ministry.
Basemap credits: Ministry of Land, Water and Resource Stewardship - GeoBC Branch, OpenStreetMap, US Census Bureau, CGIAR- CSI, USGS, Government of Canada