

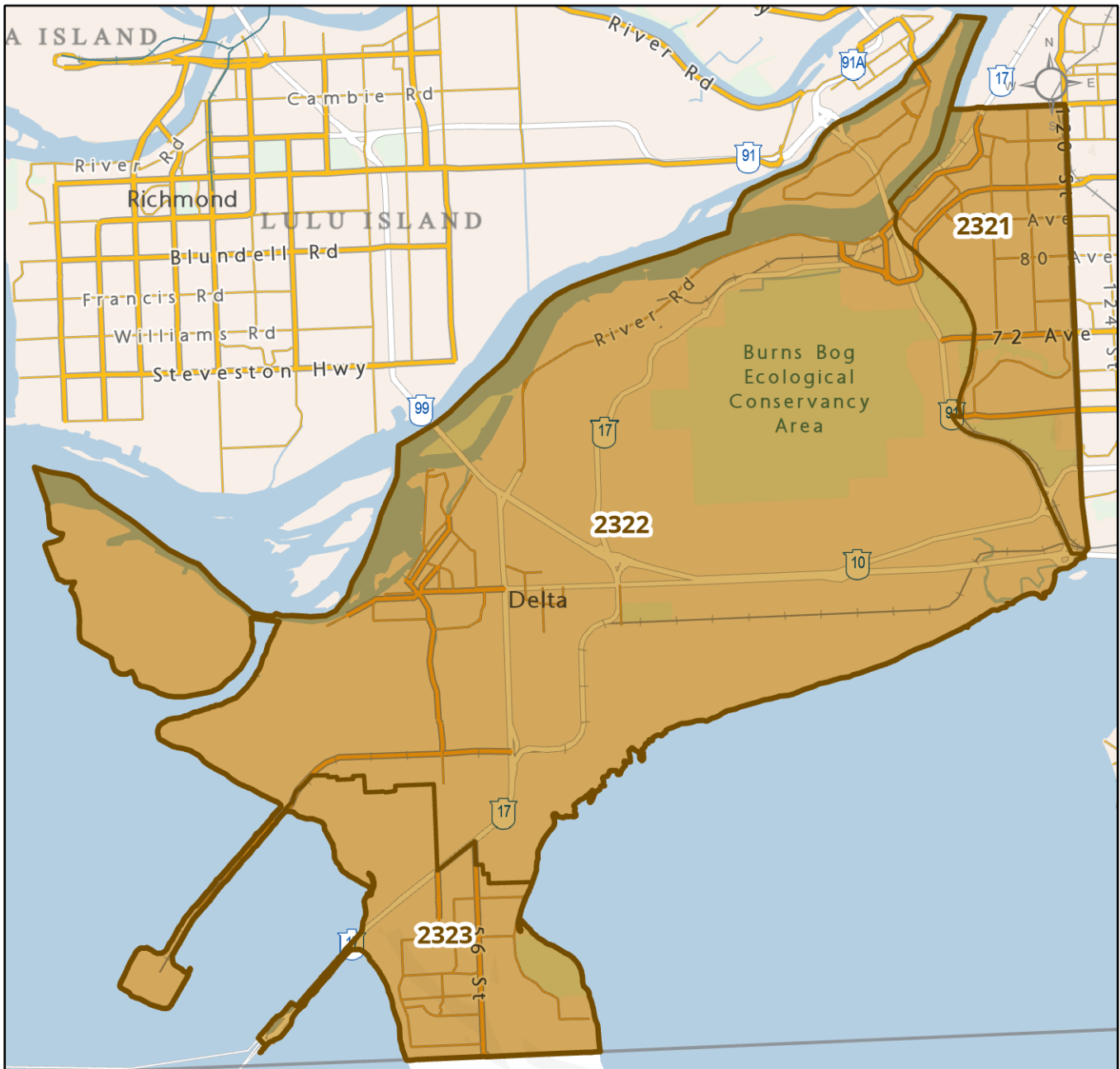
# Local Health Area (LHA)

## 232 Delta



### Community Health Service Area (CHSA)

- 2321 North Delta
- 2322 Ladner
- 2323 Tsawwassen



0 6 Kilometers 1:131,000

Ministry of Health, 2023  
Health Boundaries Version 2022

The B.C. Ministry of Health developed the Community Health Service Area (CHSA) and Local Health Area (LHA) geographic boundaries for administrative purposes to inform health system planning and service delivery. The names and areas represented by CHSAs and LHAs are subject to change at the discretion of the Ministry.  
Basemap credits: Ministry of Land, Water and Resource Stewardship - GeoBC Branch, OpenStreetMap, US Census Bureau, CGIAR-CSI, USGS, Government of Canada