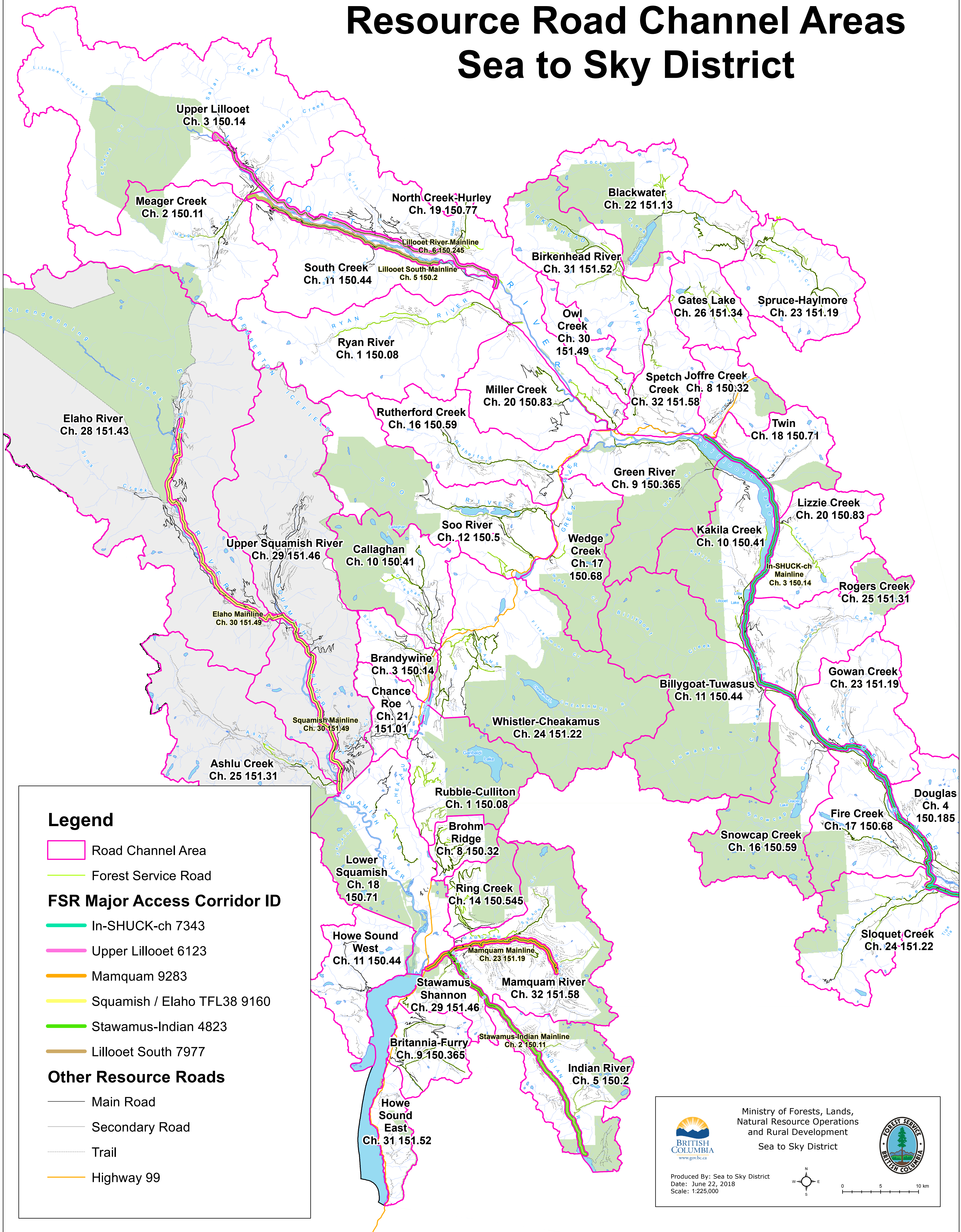


Resource Road Channel Areas Sea to Sky District



Legend

- Road Channel Area
- Forest Service Road

FSR Major Access Corridor ID

- In-SHUCK-ch 7343
- Upper Lillooet 6123
- Mamquam 9283
- Squamish / Elaho TFL38 9160
- Stawamus-Indian 4823
- Lillooet South 7977

Other Resource Roads

- Main Road
- Secondary Road
- Trail
- Highway 99

Ministry of Forests, Lands,
Natural Resource Operations
and Rural Development
Sea to Sky District

Produced By: Sea to Sky District
Date: June 22, 2018
Scale: 1:225,000

DISTRICT	LOCATION	RRCHANNEL	FREQUENCY
DSQ	Rubble-Culliton	1	150.080
DSQ	Ryan River	1	150.080
DSQ	Stawamus-Indian Mainline	2	150.110
DSQ	Meager Creek	2	150.110
DSQ	Upper Lillooet	3	150.140
DSQ	Brandywine	3	150.140
DSQ	In-SHUCK-ch Mainline	3	150.140
DSQ	Douglas	4	150.185
DSQ	Lillooet South Mainline	5	150.200
DSQ	Indian River	5	150.200
DSQ	Lillooet River Mainline	6	150.245
DSQ	Joffre Creek	8	150.320
DSQ	Brohm Ridge	8	150.320
DSQ	Britannia-Furry	9	150.365
DSQ	Green River	9	150.365
DSQ	Callaghan	10	150.410
DSQ	Kakila Creek	10	150.410
DSQ	Billygoat-Tuwasus	11	150.440
DSQ	South Creek	11	150.440
DSQ	Howe Sound West	11	150.440
DSQ	Soo River	12	150.500
DSQ	Ring Creek	14	150.545
DSQ	Rutherford Creek	16	150.59
DSQ	Snowcap Creek	16	150.590
DSQ	Fire Creek	17	150.680
DSQ	Wedge Creek	17	150.680
DSQ	Lower Squamish	18	150.710
DSQ	Twin	18	150.710
DSQ	North Creek-Hurley	19	150.770
DSQ	Lizzie Creek	20	150.830
DSQ	Miller Creek	20	150.830
DSQ	Chance-Roe	21	151.010
DSQ	Blackwater	22	151.130
DSQ	Gowan Creek	23	151.190
DSQ	Spruce-Haylmore	23	151.190
DSQ	Mamquam Mainline	23	151.190
DSQ	Sloquet Creek	24	151.220
DSQ	Whistler-Cheakamus	24	151.220
DSQ	Ashlu Creek	25	151.310
DSQ	Rogers Creek	25	151.310
DSQ	Gates Lake	26	151.340
DSQ	Elaho River	28	151.430
DSQ	Upper Squamish River	29	151.460
DSQ	Stawamus-Shannon	29	151.460
DSQ	Squamish / Elaho Mainline	30	151.490
DSQ	Owl Creek	30	151.490
DSQ	Birkenhead River	31	151.520
DSQ	Howe Sound East	31	151.520
DSQ	Mamquam River	32	151.580
DSQ	Spetch	32	151.580



File: 6890-50/DSQ

June 13, 2014

Dear Forest Service Road Users:

DISTRICT MANAGER INFORMATION NOTICE – COAST AREA

RADIO COMMUNICATION PROTOCOLS BEING IMPLEMENTED ON FSRS

This letter is to advise of pending changes to radio communication protocols for forest service roads in the Sea to Sky P cwtcnTguqwtg"District.

Standard resource road radio communications protocols are being implemented in the district following on successful outcomes of pilot projects examining whether road user safety could be improved through standardized protocols for mobile radio communications when travelling on resource roads in BC. The pilot projects consisted of implementing: standardized radio communications signage, a set of dedicated resource road radio channels, and standardized call procedures. The pilots occurred on Vancouver Island, the Sunshine Coast and in the South Peace areas of the province.

The standard resource road radio communications protocol, radio channels and signs were developed by the radio communications working group, with representatives from the Ministry of Forests, Lands and Natural Resource Operations (including BC Timber Sales), Industry Canada, BC Forest Safety Council/Truck Safe and FPInnovations. The working group coordinated numerous meetings with forest licensees and truck drivers in developing the protocol. The Ministry of Forests, Lands and Natural Resource Operations lead the implementation and evaluation of the pilot projects. Industry Canada is taking the greater lead role as implementation of the standard protocols spreads to other areas of the province.

Previously, mobile radio communications has been highly variable across the province with users required to know the unwritten local protocols. Heavy radio traffic volume caused frequent overlapping calls and interference resulting in reduced safety of radio communications systems. Truckers and other road users with mobile radios needed to reprogram their radios to gain access to local radio channels as they moved around to different work locations. In the pilot areas, a single set of radio channels was used on forest service roads. New communications signs were posted for the pilot roads indicating which radio channel to use as well as calling procedure including: road name, location, direction being travelled, vehicle type and calling interval.



Page 1 of 2

The pilot projects were successful and the new standard protocols are being gradually expanded from the original pilot areas and into other areas of the province. A key finding in the pilots were challenges in regards to the incorporation of tones in the radio channels associated with the pilot radio frequencies. As a result, new resource road channels without tones have been established for provincial implementation.

Currently, activity is underway in the Vancouver Island and Sunshine Coast areas to revise the standard bank of resource road radio channels and further expand the standard communications protocols onto other forest service roads. Sea to Sky District will also be transitioning to the new protocols. The transition will begin on **Saturday, August 23, 2014**.

Throughout the next several weeks forest service roads will be reposted with the new radio channel numbers. Road radio users shall be expected to have the revised standard bank of Resource Road Radio Channels (40 channels), pre-programmed into their radios prior to August 23, 2014, for use when the posted channels are updated on individual roads. Radio shops are aware and prepared to program radios with the revised channels. **Note:** as not all resource roads will be adopting the new Resource Road Radio Channels, it is recommended that road users retain current radio frequencies until such time that they are no longer required.

Where posted, road users using mobile radios must use the posted channels and call protocols. All road users are reminded that forest service roads and the majority of resource roads are not radio controlled but that they are radio assisted and should drive safely according to the road conditions and weather.

It is recommended that all users exercise additional caution when travelling on resource roads during the transition period. This should be communicated to all affected employees and contractors.

The local Resource Road Safety committees have worked together to bring this change about in this area and forest licensees have been disseminating information and informing their employees and contractors.

Thanks to all those involved in collaborating in the transition, including forest licensees and road safety committees to make this a safe transition.

For further information, please contact: District Engineering, Sea to Sky Natural Resource District at 604-898-2139, or Industry Canada at 1-800-667-3780.

A summary report of the pilot projects, produced by FPInnovations, as well as other information pertaining to resource road radio communications can be found by visiting: www.for.gov.bc.ca/hth/engineering/Road_Radio_Project.htm.

Yours truly,

.



Dave Southam, RPF
District Manager

Attachments: Resource Road Channel Areas, Sea to Sky District