

Plan2Adapt is Updated!



June 18, 2020

FPIInnovations Webinar

Kari Tyler

ktyler@uvic.ca

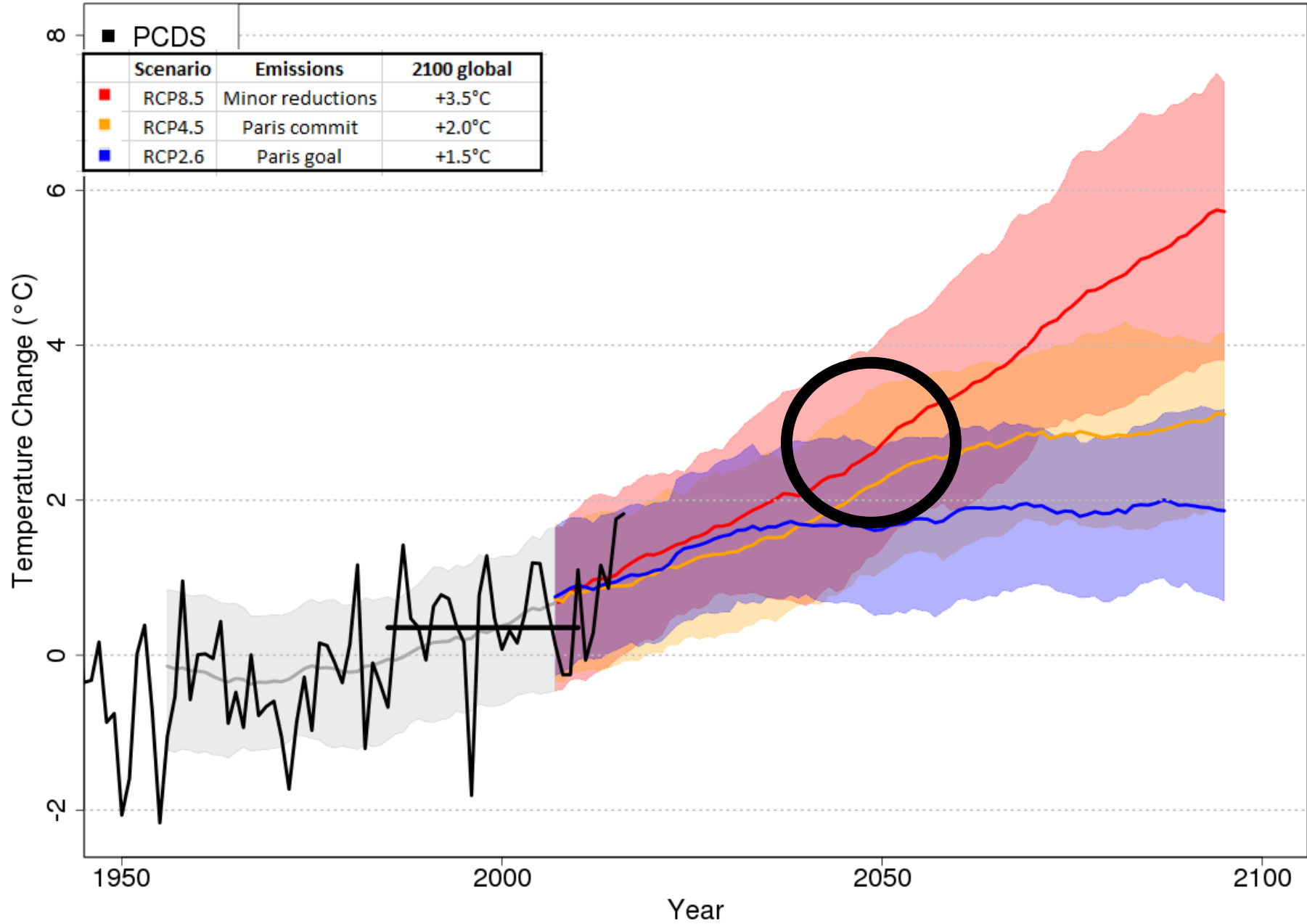
Updated Plan2Adapt

<https://pacificclimate.org/analysis-tools/plan2adapt>

Simpler & more user friendly than Climate Explorer:

- Fewer variables available
- Pre-defined regions
- Output from multiple models
- Uses RCP 8.5

Future Warming in BC



Features of Plan2Adapt

Features;

- Summary table
- Impacts Tab
- Maps
- Graphs (coming soon!)

Features;

- Defined regions; regional districts, health authorities, ecoprovinces
- Choose from; 2020s, 2050s and 2080s time period

I am interested in information about
projected climate change ...

in

British Columbia

British Columbia

REGIONAL DISTRICTS

Alberni-Clayoquot

Bulkley-Nechako

Capital

Cariboo

Central Coast

I am interested in information about
projected climate change ...

in

British Columbia

during the

2050s (2040–2069)

2020s (2010–2039)

2050s (2040–2069)

2080s (2070–2099)

I am interested in information about projected climate change ...

in

Kootenay Boundary

during the

2050s (2040–2069)

Summary

Impacts

Maps

Graphs

Notes

References

About

The table below shows projected changes in average (mean) temperature, precipitation and several derived climate variables from the baseline historical period (1961-1990) to the 2050s (2040-2069) for the Kootenay Boundary region. The ensemble median is a mid-point value, chosen from a PCIC standard set of Global Climate Model (GCM) projections (see the 'Notes' tab for more information). The range values represent the lowest and highest results within the set.

Climate Variable	Season	Projected Change from 1961-1990 Baseline	
		Ensemble Median	Range (10th to 90th percentile)
Temperature* (°C)	Annual	+3.2 °C	+2.1 °C to +4.4 °C
Precipitation (%)	Annual	+2.1%	-3.3% to +6.4%
	Summer	-5.2%	-39% to +5.1%
	Winter	+1.1%	-3.7% to +5.2%
Snowfall* (%)	Annual	-34%	-38% to -31%
	Fall	-48%	-59% to -39%
	Winter	-24%	-26% to -19%
	Spring	-58%	-72% to -47%
Growing Degree-Days* (degree days)	Annual	+584 degree days	+365 to +902 degree days
Heating Degree-Days* (degree days)	Annual	-1050 degree days	-1400 to -724 degree days
Frost-Free Days* (days)	Annual	+48 days	+36 to +69 days

* These values are derived from temperature and/or precipitation.

I am interested in information about projected climate change ...

in

Kootenay Boundary | ▾

during the

2050s (2040–2069) | ▾

Summary Impacts **Maps** Graphs Notes References About

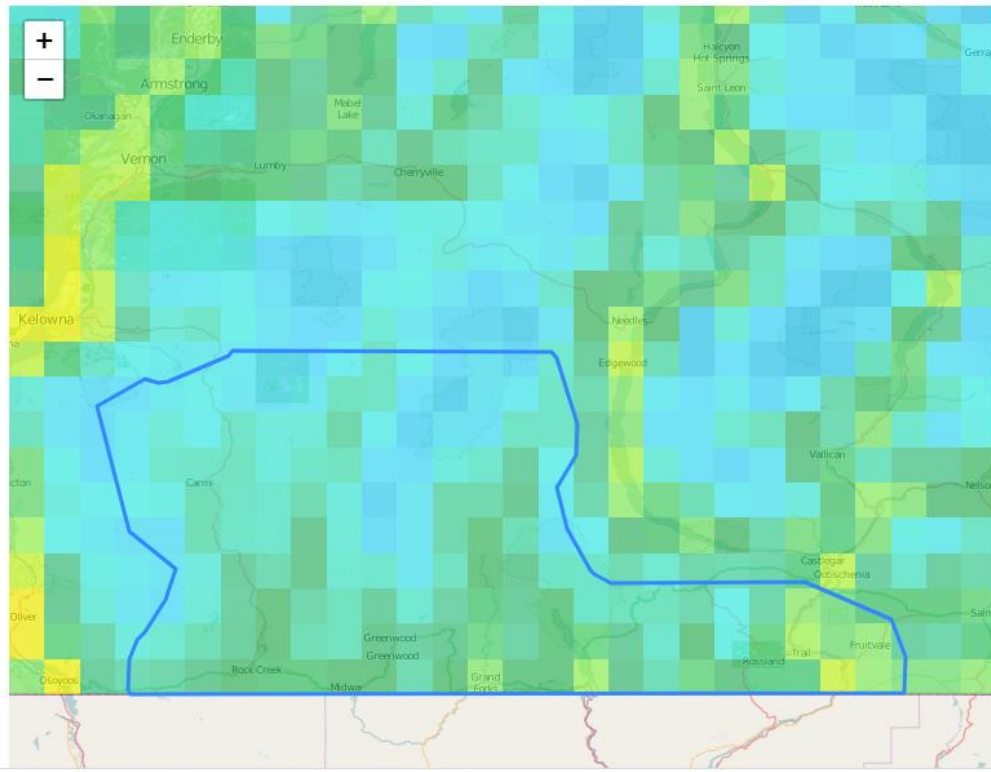
... with details about **Frost-Free Days** | ▾

for a typical **Annual** | ▾

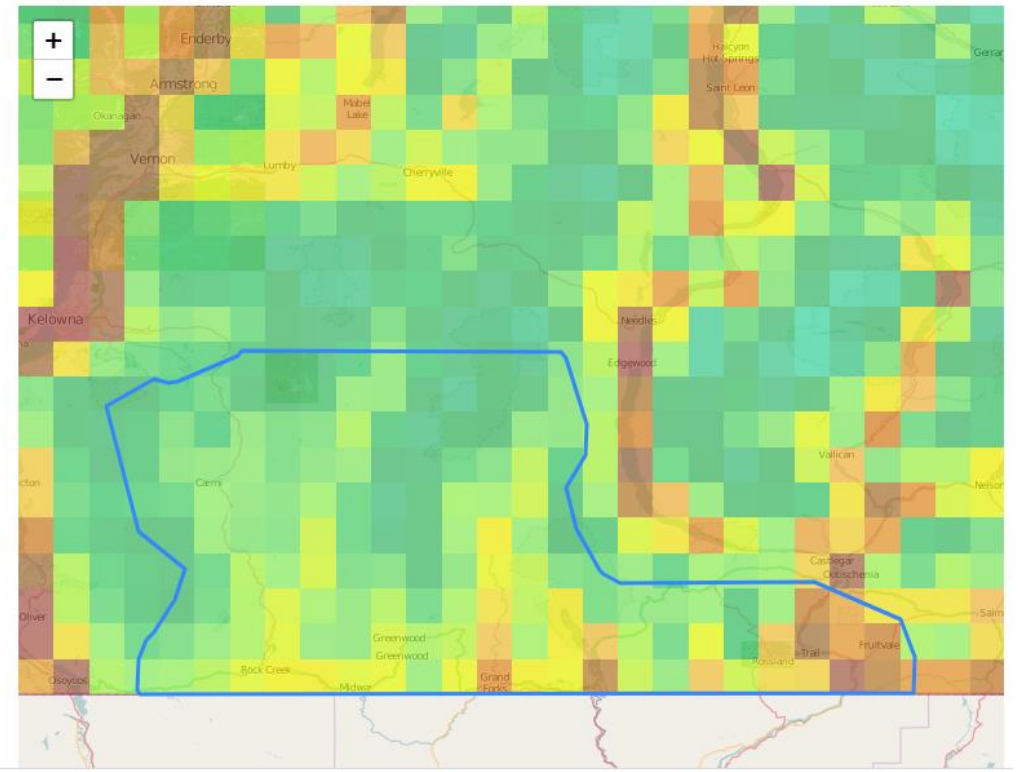
period



Historical: 1961-1990



Projected: 2040-2069



Available variables:

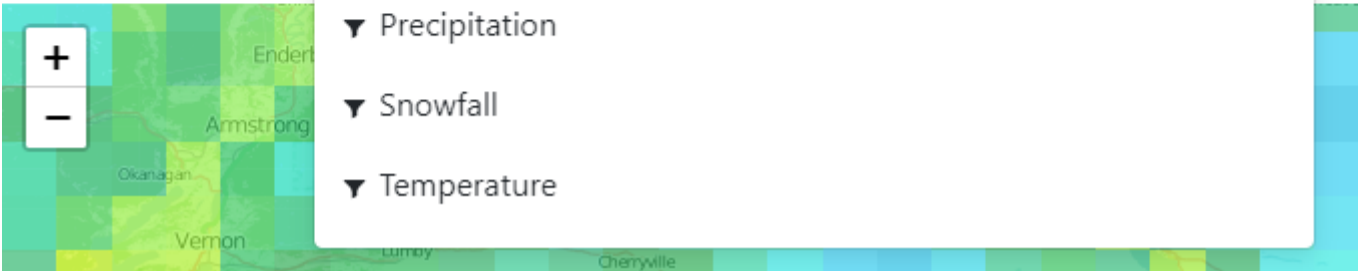
Summary Impacts **Maps** Graphs Notes References About

... with details about

< 0

Historical: 1961

+
-



- ▼ MULTI-YEAR STATISTIC DATASETS
- ▼ Frost-Free Days
- ▼ Growing Degree-Days
- ▼ Heating Degree-Days
- ▼ Precipitation
- ▼ Snowfall
- ▼ Temperature

Maps: Annual and Seasonal data

al period

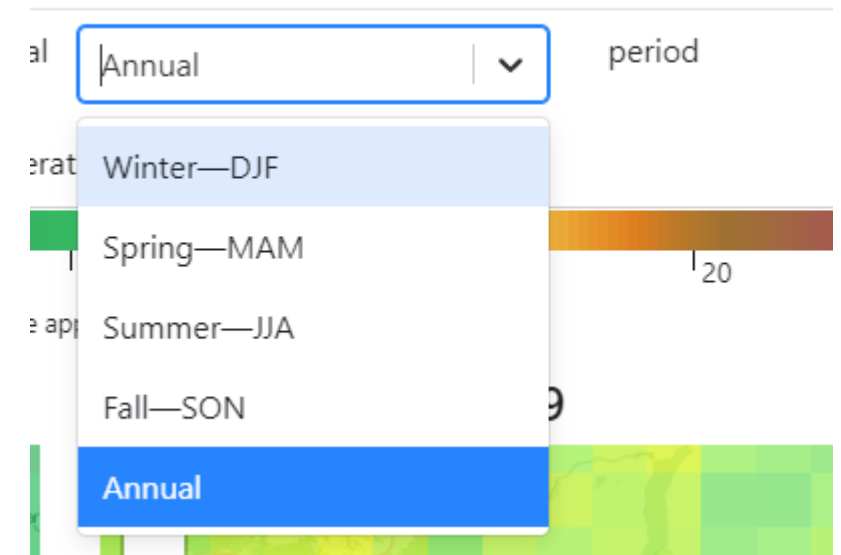
erat

Spring—MAM

Summer—JJA

Fall—SON

Annual



Questions?



PLAN2ADAPT

Kari Tyler

ktyler@uvic.ca