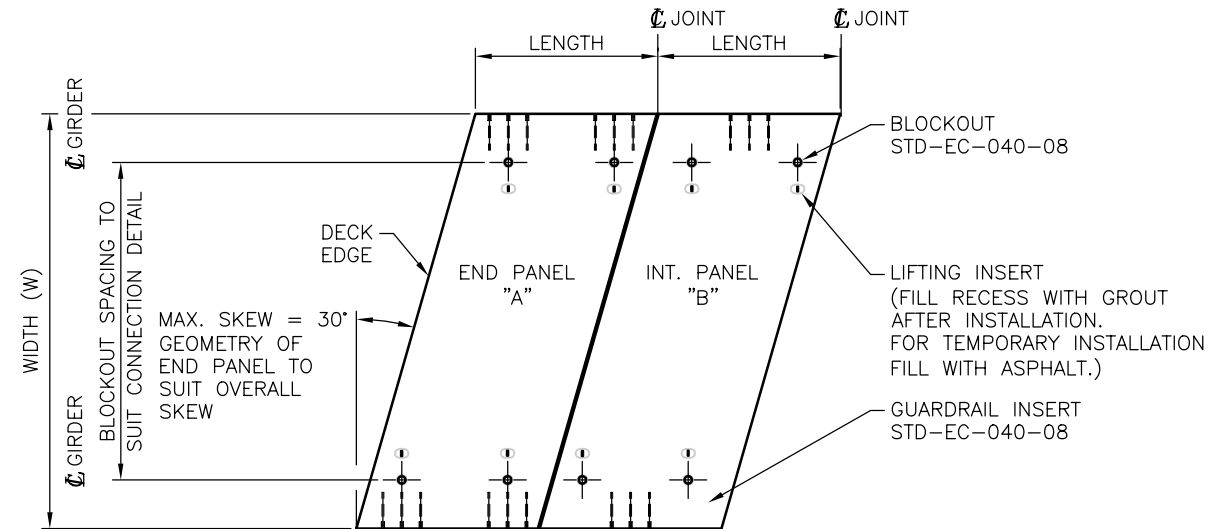
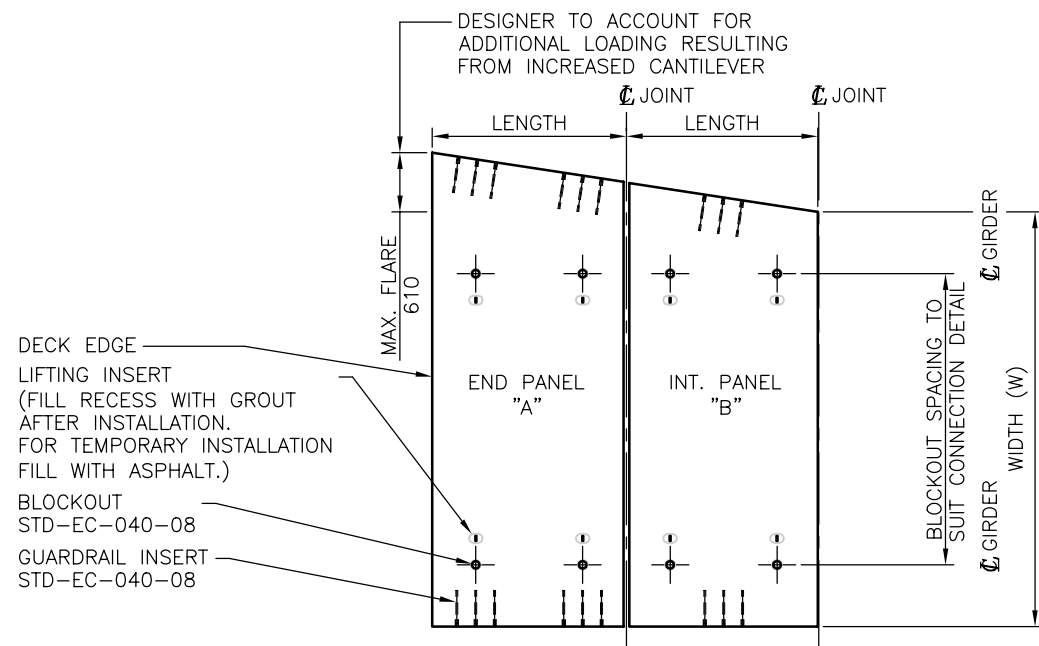


TYPE 1 – SQUARE PANEL GEOMETRY – PLAN
1:100



TYPE 3 – SKEWED PANEL GEOMETRY (SKEW MAX. 30°) – PLAN
1:100



TYPE 2 – FLARED PANEL GEOMETRY – PLAN
1:100

NOTES:

- DECK PANEL LENGTH:**
- THE PREFERRED DECK PANEL LENGTH IS 3048 (10').
 - NOTWITHSTANDING, DECK PANEL LENGTHS SHOULD CONFORM TO THE FOLLOWING:
 - MINIMUM DECK PANEL LENGTH: 1524 mm
 - MAXIMUM INTERNAL DECK PANEL LENGTH: 3048 mm
 - MAXIMUM END DECK PANEL LENGTH (DECK BESIDE BALLAST WALL): 3048 mm
 - MAXIMUM END PANEL LENGTH (DECK OVER BALLAST WALL): 3300 mm

ASSUME NOT TO SCALE

ORIGINAL SIGNED AND SEALED



SCALE AS SHOWN
 Designed J.H. Date MAR 2010
 Checked D.J.H. Date MAR 2010
 Drawn W.R. Date MAR 2010

STANDARD BRIDGE DRAWING

STANDARD STEEL GIRDER BRIDGE WITH NON-COMPOSITE DECK PRECAST DECK PANEL TYPES

ORIGINAL SIGNED and SEALED BY: JULIEN HENLEY
 APPROVED BY:

DESIGN ENGINEER: JULIEN HENLEY
 MOF ENGINEER
 DATE: JULIEN HENLEY
 DATE:

FILE No. DRAWING No. STD-EC-040-04

Rev	Date	DESCRIPTION	Init

REVISIONS