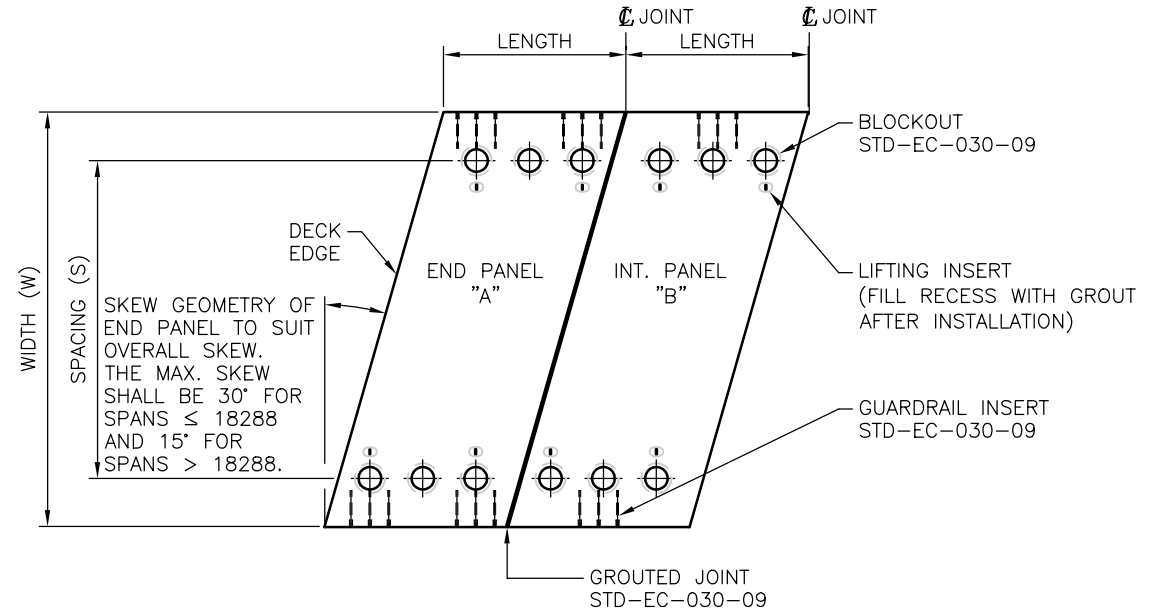
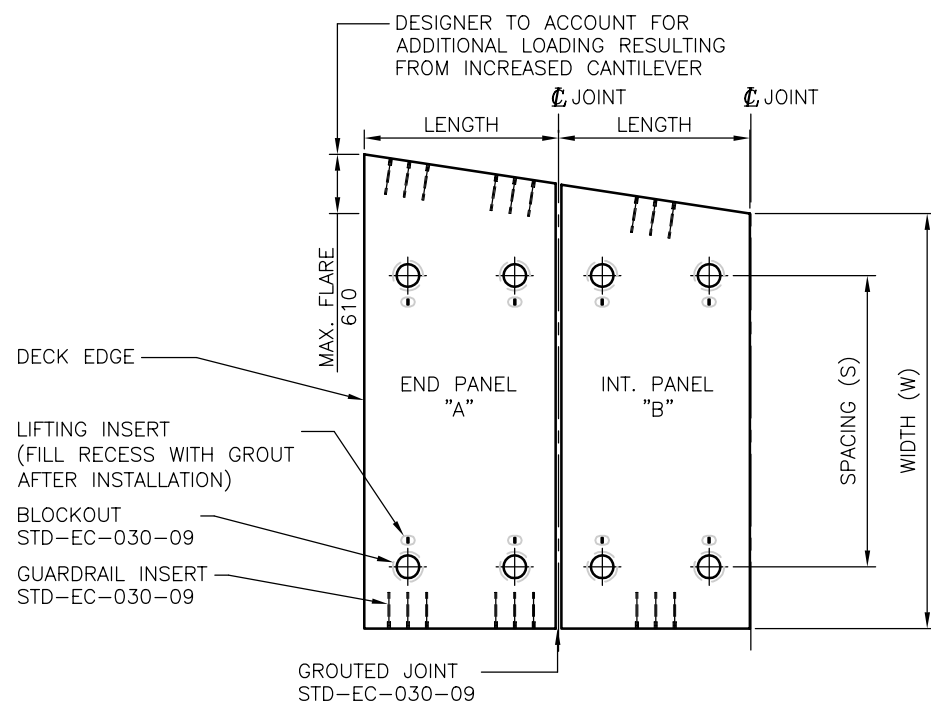


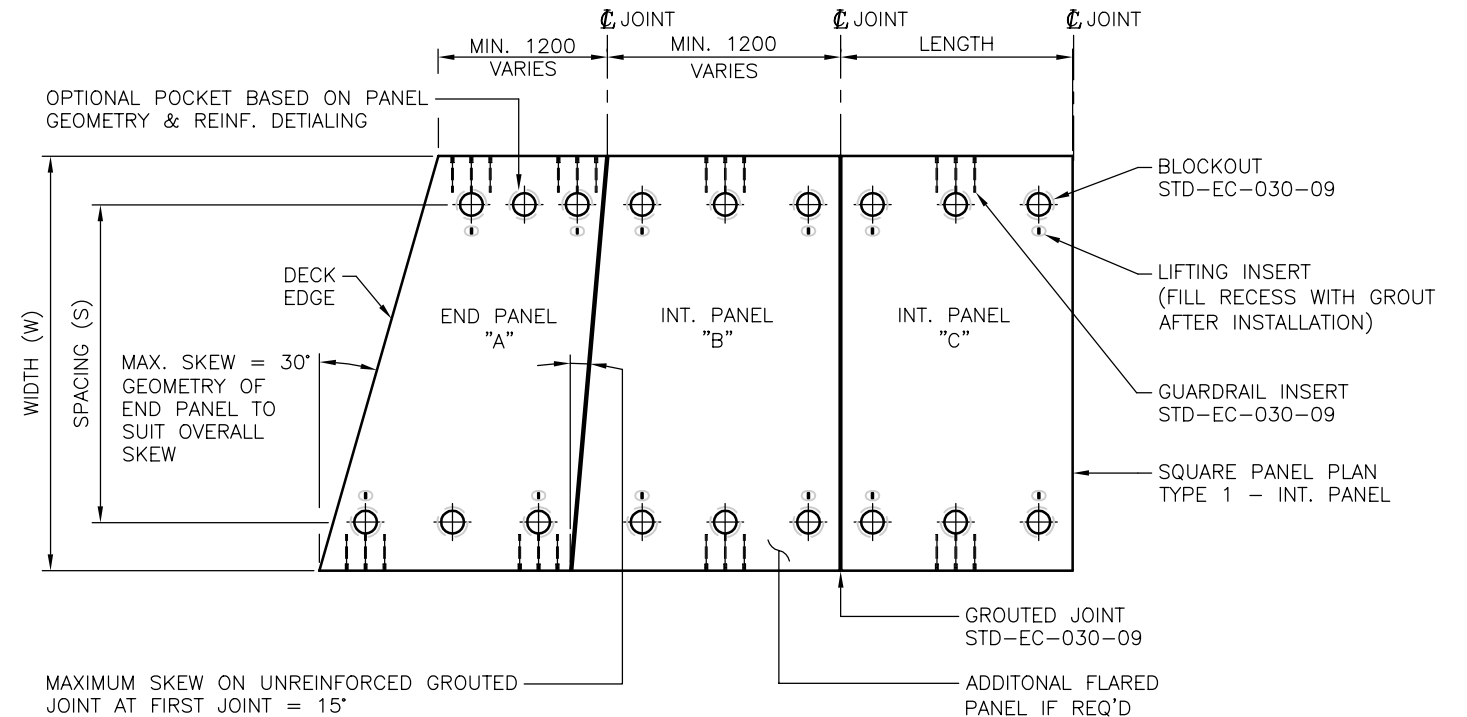
TYPE 1 - SQUARE PANEL GEOMETRY - PLAN
1:100



TYPE 3 - SKEWED PANEL GEOMETRY (ALL PANELS SKEWED) - PLAN
1:100



TYPE 2 - FLARED PANEL GEOMETRY - PLAN
1:100



TYPE 4 - SKEWED END PANEL(S) GEOMETRY - PLAN
1:100

NOTES:

- DECK PANEL LENGTH:**
- THE PREFERRED DECK PANEL LENGTH IS 3048 (10').
 - NOTWITHSTANDING, DECK PANEL LENGTHS SHOULD CONFORM TO THE FOLLOWING:
 - MINIMUM DECK PANEL LENGTH: 1524 mm
 - MAXIMUM INTERNAL DECK PANEL LENGTH: 3048 mm
 - MAXIMUM END DECK PANEL LENGTH (DECK BESIDE BALLAST WALL): 3048 mm
 - MAXIMUM END PANEL LENGTH (DECK OVER BALLAST WALL): 3300 mm

**ASSUME NOT TO SCALE
NOT FOR CONSTRUCTION**

SCALE AS SHOWN		Designed: J.H.	Date: MAR 2010
		Checked: D.J.H.	Date: MAR 2010
		Drawn: W.R.	Date: MAR 2010
Rev	Date	DESCRIPTION	Init
REVISIONS			

STANDARD BRIDGE DRAWING	
STANDARD STEEL GIRDER BRIDGE WITH COMPOSITE DECK PRECAST DECK PANEL - TYPES	
ORIGINAL SIGNED and SEALED BY: JULIEN HENLEY	APPROVED BY:
DESIGN ENGINEER	MOF ENGINEER
DATE: JULIEN HENLEY	DATE:
FILE No.	DRAWING No.
	STD-EC-030-05