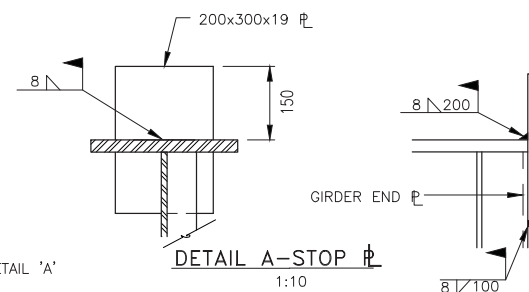
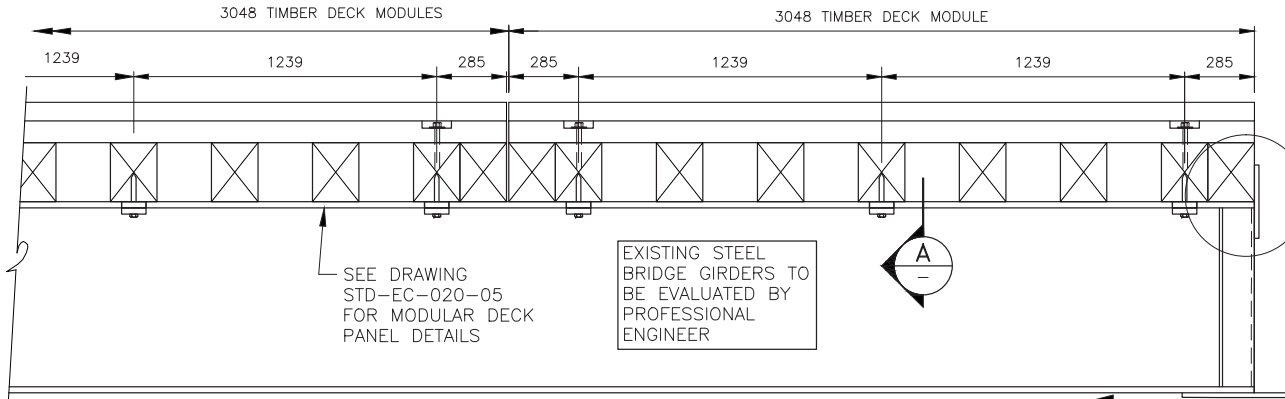


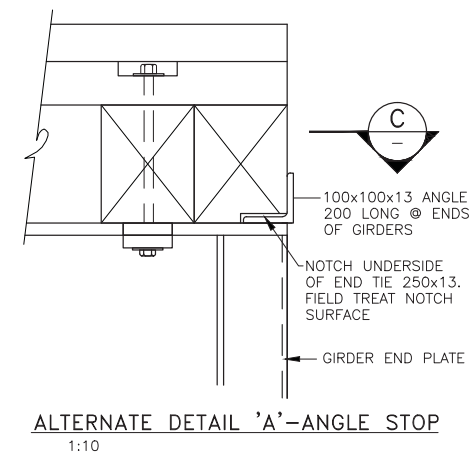
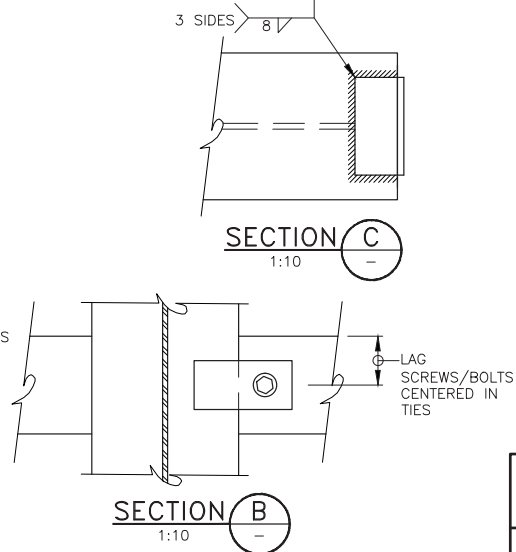
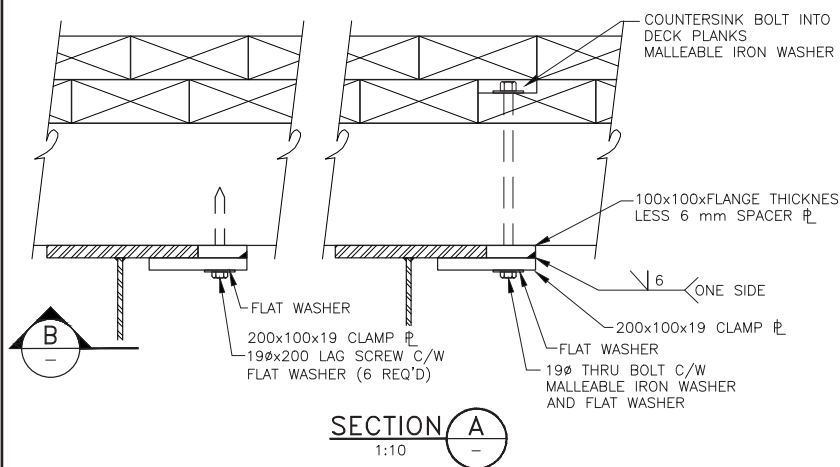
DIMENSIONS SHOWN FOR BCL-625 & L-100; DIMENSIONS FOR L150/L165 TO BE ADJUSTED ACCORDINGLY
 3048 TIMBER DECK MODULES

3048 TIMBER DECK MODULE



DECK CLAMPED TO GIRDER: RETROFIT APPLICATIONS

1:20



ALTERNATE LAG SCREW INSTALLATION NOTES:

- LAG SCREWS SHALL 19mm DIA x 200mm LONG (6 REQUIRED)
- PRE-DRILLING FOR LAG SCREW HOLES SHALL BE AS FOLLOWS:
 - 19 mm DIA HOLE FOR SHANK PENETRATION LENGTH INTO CROSSTIE ONLY
 - 12.5 mm DIA HOLE FOR FULL PENETRATION LENGTH INTO CROSSTIE ONLY
- A NON-PETROLEUM LUBRICANT (IE .SOAP) MAY BE USED TO FACILITATE INSTALLATION
- IF LAG SCREWS HAVE BEEN INSTALLED MORE THAN TWO TIMES OR IF LAG SCREWS ARE STRIPPED, USE BOLT THROUGH OPTION

**ASSUME NOT TO SCALE
 NOT FOR CONSTRUCTION**

SCALE	AS SHOWN	Designed	ABS	Date	2012/03/12
		Checked	LT	Date	2012/03/20
		Drawn	ABS	Date	2012/03/12

Rev	Date	DESCRIPTION	Init

MINISTRY OF FORESTS, LANDS AND NATURAL RESOURCE OPERATIONS ENGINEERING BRANCH	
STANDARD BRIDGE DRAWING	
MODULAR TIMBER DECK PANELS, ATTACHMENT DETAILS FIELD RETROFIT TO EXISTING BRIDGES	
ORIGINAL SIGNED and SEALED BY: A.B. SWAN, P.Eng	MFR ENGINEER: DATE
DESIGN ENGINEER: A.B. SWAN P.ENG DATE: MARCH 26, 2012	APPROVED BY: BRIAN CHOW, P.ENG, CHIEF ENGINEER DATE:
FILE No.	DRAWING No. STD-EC-020-07