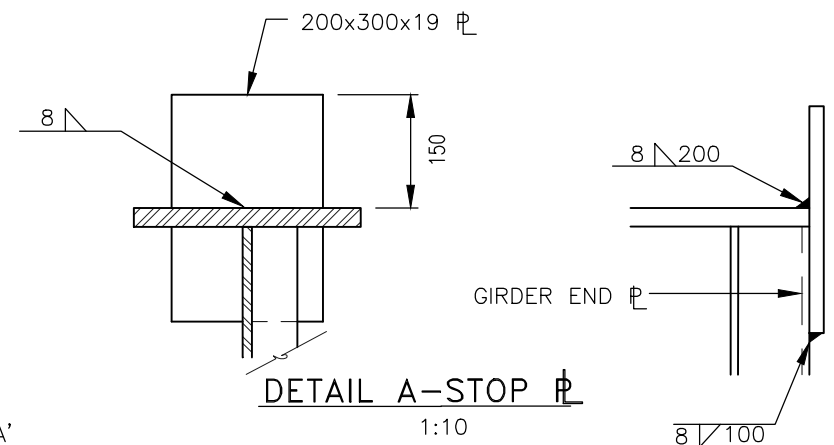
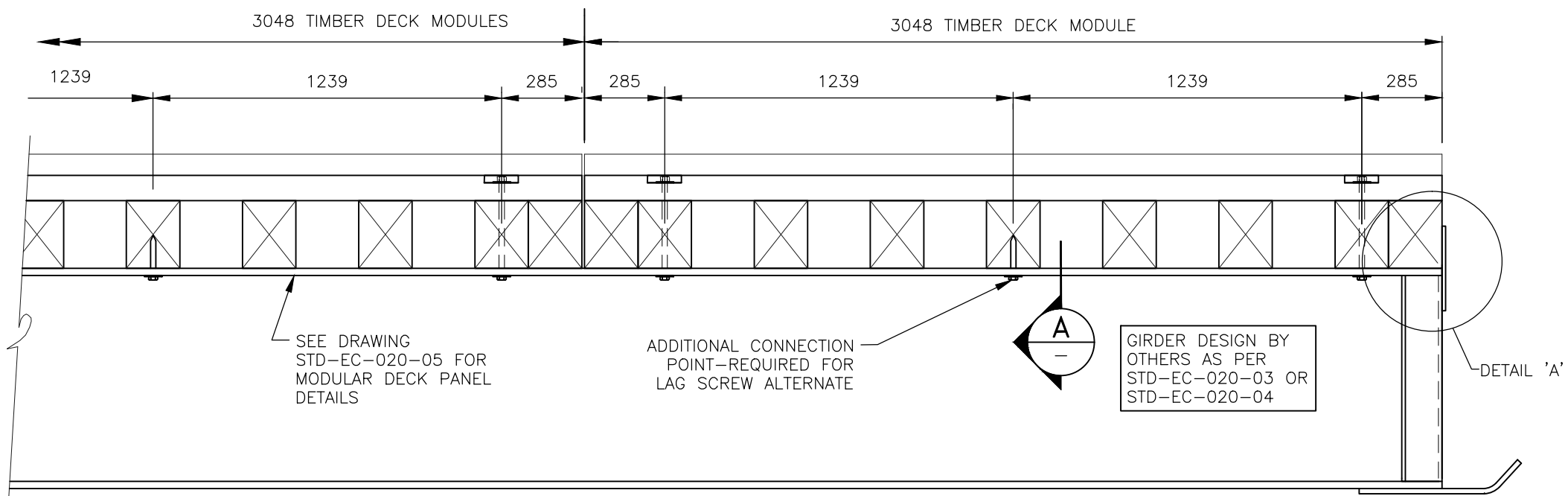
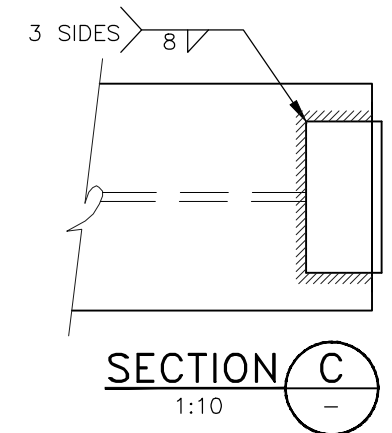
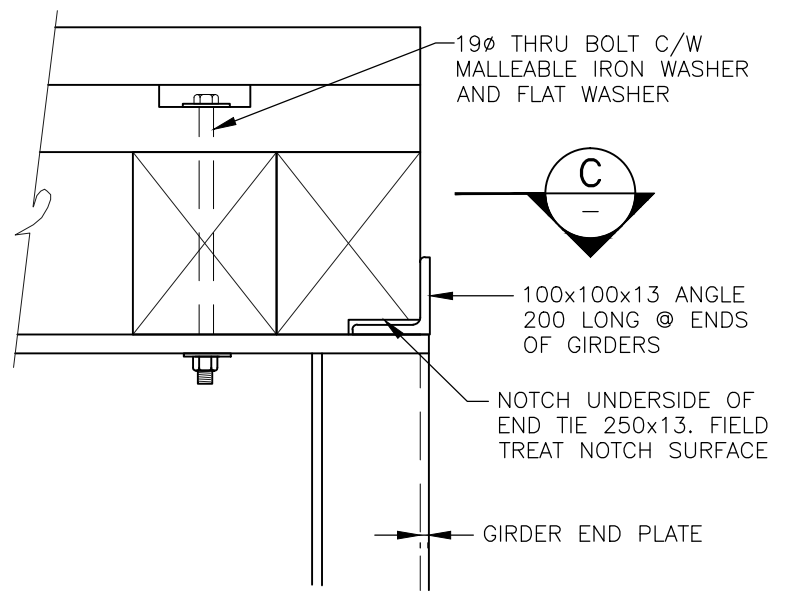
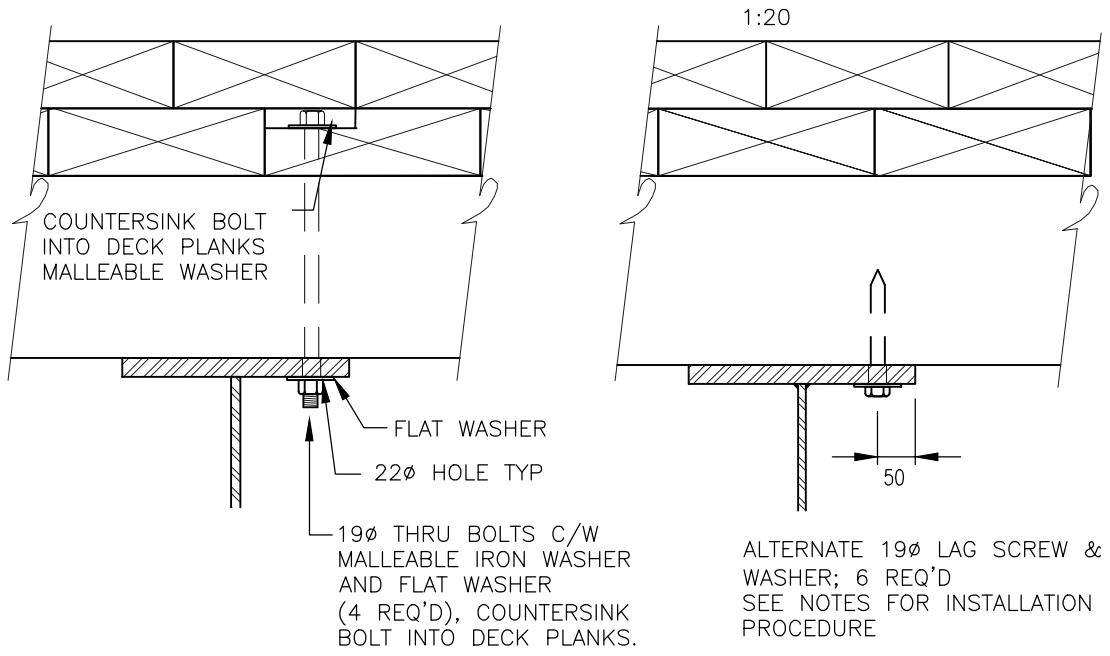


DIMENSIONS SHOWN FOR BCL-625 7 L-100; DIMENSIONS FOR L150/L165 TO BE ADJUSTED ACCORDINGLY



DECK PANEL TO GIRDER ATTACHMENT (NEW CONSTRUCTION)



- ALTERNATE LAG SCREW INSTALLATION NOTES:**
- LAG SCREWS SHALL 19mm DIA x 200mm LONG (6 REQUIRED)
  - PRE-DRILLING FOR LAG SCREW HOLES SHALL BE AS FOLLOWS:
    - 19 mm DIA HOLE FOR SHANK PENETRATION LENGTH INTO CROSSTIE ONLY
    - 12.5 mm DIA HOLE FOR FULL PENETRATION LENGTH INTO CROSSTIE ONLY
  - A NON-PETROLEUM LUBRICANT (IE .SOAP) MAY BE USED TO FACILITATE INSTALLATION
  - IF LAG SCREWS HAVE BEEN INSTALLED MORE THAN TWO TIMES OR IF LAG SCREWS ARE STRIPPED, USE BOLT THROUGH OPTION

**BRITISH COLUMBIA** **MINISTRY OF FORESTS, LANDS AND NATURAL RESOURCE OPERATIONS**  
ENGINEERING BRANCH

STANDARD BRIDGE DRAWING

**MODULAR TIMBER DECK PANELS, ATTACHMENT DETAILS-NEW BRIDGES**

ORIGINAL SIGNED and SEALED BY: A.B. SWAN, PEng	MFR ENGINEER: DATE
DESIGN ENGINEER: A.B. SWAN P.ENG DATE: MARCH 26, 2012	APPROVED BY: BRIAN CHOW, P.ENG, CHIEF ENGINEER DATE:
FILE No.	DRAWING No. STD-EC-020-06

SCALE	AS SHOWN	Designed	ABS	Date	2012/03/12
		Checked	LT	Date	2012/03/20
		Drawn	ABS	Date	2012/03/12
Rev	Date	DESCRIPTION	Init		
-	-	-	-		
REVISIONS					

2009/02/19 \\STUDY-PC\Public\Documents\ACAD Dwgs