

**MINISTRY OF FORESTS, LANDS AND NATURAL RESOURCE OPERATIONS**  
ENGINEERING BRANCH

STANDARD BRIDGE DRAWING

PERMANENT, CONTINUOUS TIMBER DECK BRIDGE  
GENERAL ARRANGEMENT

ORIGINAL SIGNED and SEALED BY: A.B. SWAN, P.Eng  
DATE: \_\_\_\_\_  
APPROVED BY: BRIAN CHOW, P.Eng, CHIEF ENGINEER  
DATE: MARCH 26, 2012  
FILE No. \_\_\_\_\_  
DRAWING No. STD-EC-020-03

Rev	Date	DESCRIPTION	IR

SCALE AS SHOWN  
Designed: ABS Date: 2012/03/12  
Checked: LT Date: 2012/03/20  
Drawn: ABS Date: 2012/03/12

**OPTIONAL SKID PLATE BEARING DETAIL**  
1:25

**ASSUME NOT TO SCALE  
NOT FOR CONSTRUCTION**

**END GIRDER/TIE CLIP DETAIL B**  
1:25

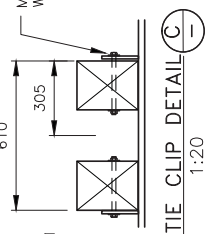
**A TYPICAL DIAPHRAGM/DECK SECTION**  
4268 (4876)\* WIDE DECK  
1:25

FOR PERMANENT BRIDGES, BALLAST WALLS TO BE 150x300x6000 TREATED TIMBER BOLTED TO GIRDER END P's UNLESS SPECIFIED OTHERWISE.

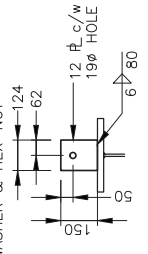
- WEAR PLANKS NAILING PATTERN:**
- WEAR PLANKS TO DECK PLANKS
  - 150mm GALV. COMMON SPIKES
  - 2 @ 150 APART 300 FROM ENDS
  - 2 @ 150 APART @ +/- 1000mm
  - O/C TYPICAL
- DECK PLANKS NAILING PATTERN:**
- DECK PLANKS TO CROSS-TIES
  - 200mm GALV. COMMON SPIKES
  - 1 SPIKE, CENTERED ON PLANK AND TIE AT EACH END; PRE-DRILL (6mm) TO PREVENT SPLITTING
  - 1 SPIKE EVERY TIE, STAGGERED SIDE TO SIDE @ 150 APART

- GUARD RAILS SHALL ONLY BE BOLTED TO TIES THAT ARE BOLTED TO GIRDERS
- ALL TIMBER CROSS TIES TO BE INSTALLED WITH LONG SIDES VERTICAL
- DECK PLANK BUTT JOINTS SHALL BE CENTERED ON ADJACENT LINES OF PLANKS
- CROSS TIES JOINTS IN SHALL BE STAGGERED A MINIMUM OF 2 TIE SPACES

DIMENSION TO SUITE TIE SPACING



M16 BOLT C/W MALLEABLE IRON WASHER & HEX-NUT



STRUCTURAL STEEL & BRIDGE SUPPORT - DESIGN BY OTHERS

SEE DWG STD-EC-020-01 FOR TIMBER TIE SIZE & SPACING

GIRDERS INCLUDING BRACING, DESIGN BY OTHERS. SEE DWGS STD-EC-020-01 AND STD-EC-020-02

150 WALL PLANKS  
75x150 SHACKLE SLOT  
C/W 45.4 RADIUS CORNERS  
1-50ø LIFTING POINT  
2-30ø HOLES  
BEARING PLATE  
PLATE FLUSH WITH GIRDER END

DIMENSION TO SUITE TIE SPACING

