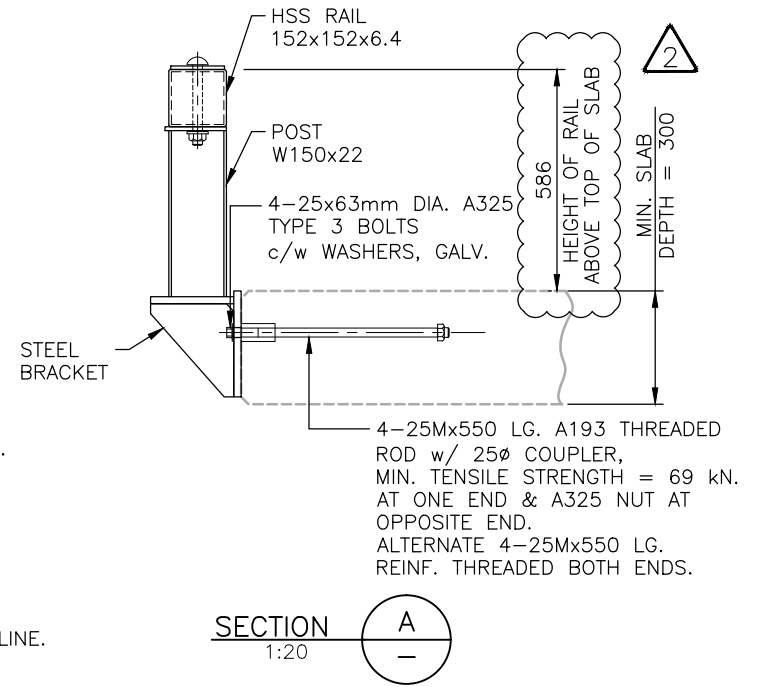
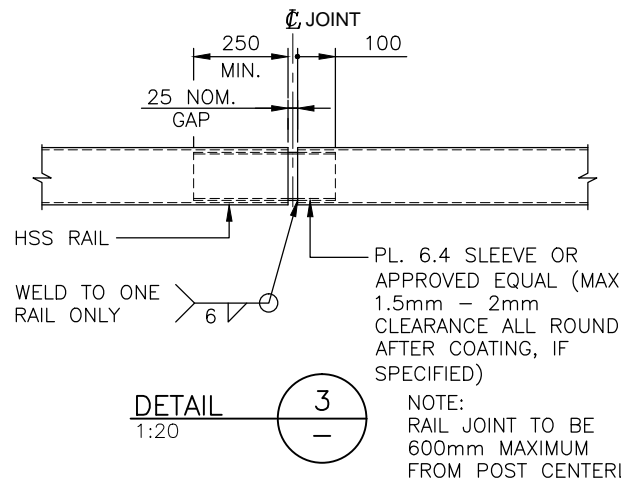
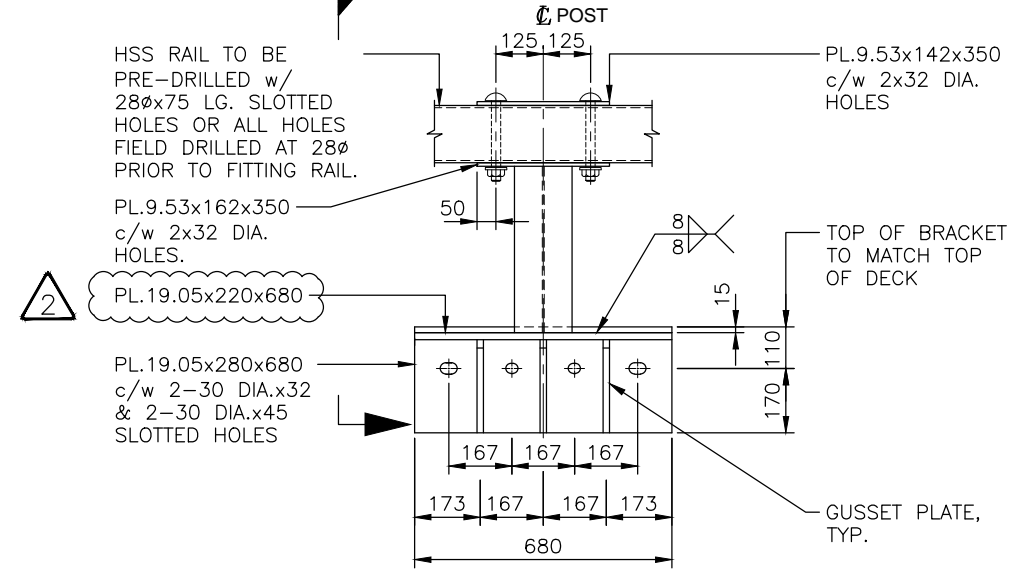
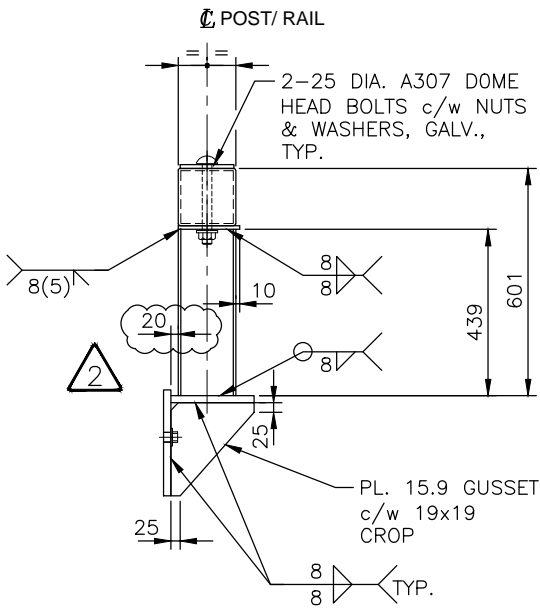
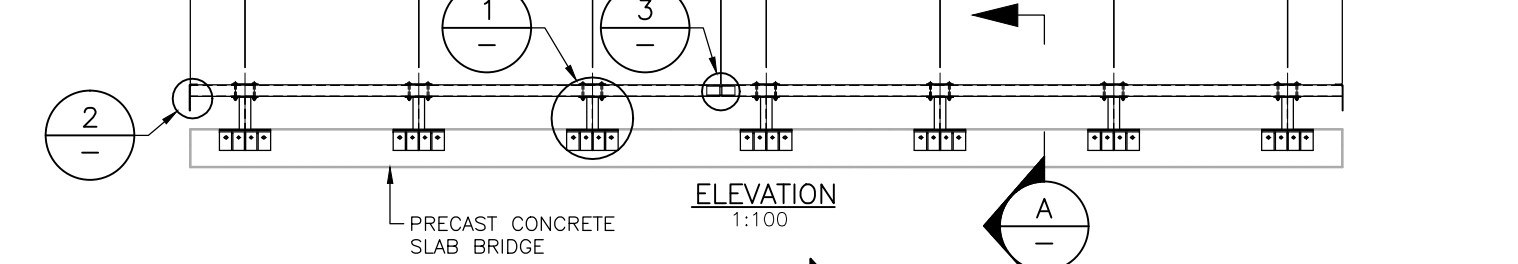


700 MAX. POST SPACING    3048 MAX.    3048 MAX.    2448±    600 MAX.    3048 MAX.    3048 MAX.    3048 MAX.    700 MAX. POST SPACING



**ASSUME NOT TO SCALE**

**NOTES:**

**GENERAL**

- GUARDRAILS HAVE BEEN DESIGNED TO MEET THE CRITERIA FOR CONTAINMENT LEVEL CL-3 AS DEFINED BY THE MINISTRY. GUARDRAILS HAVE NOT BEEN DESIGNED TO CONTAIN ERRANT VEHICLES.

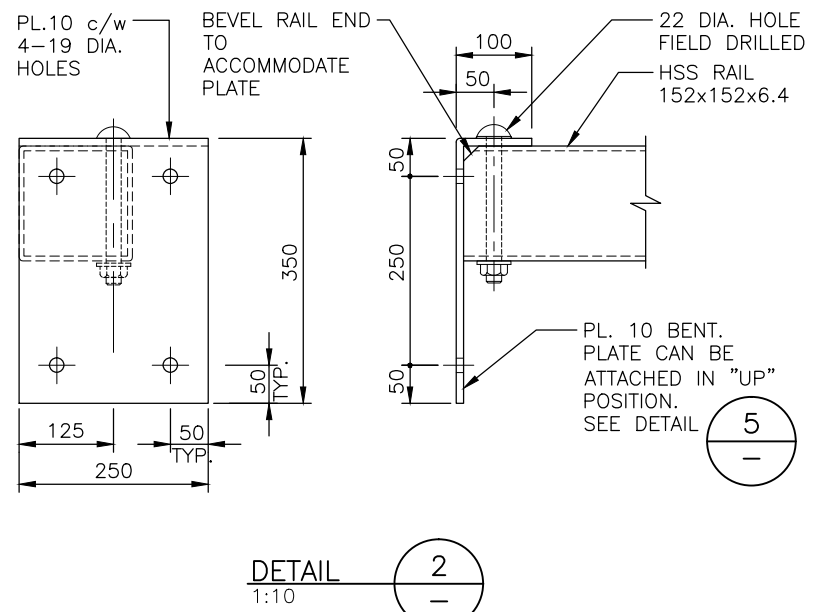
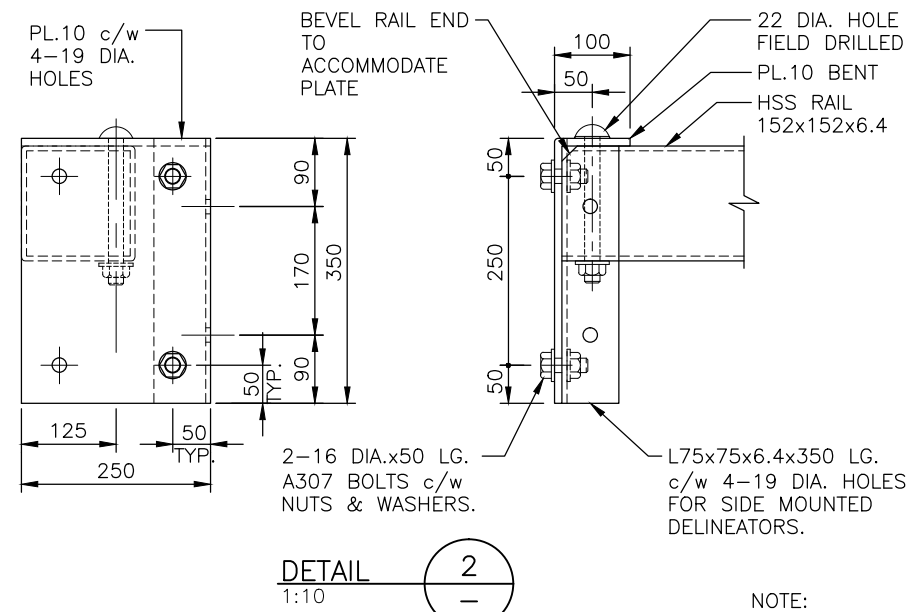
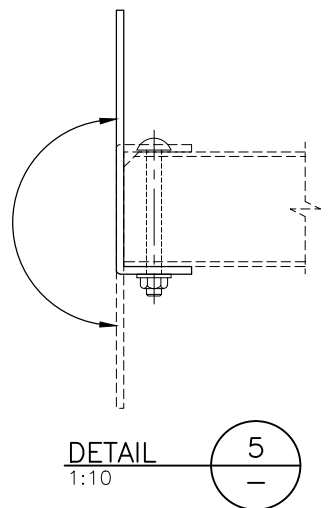
- MAXIMUM POST SPACING = 3048 C/C.

**MATERIALS**

- STEEL:
- RAILS
    - TO CSA G40.21M
    - GRADE 350W (COATED)
    - GRADE 350A (UNCOATED)
  - OR TO ASTM
    - A500 GRADE C (COATED)
    - A847 (UNCOATED)
  - POSTS TO CSA G40.21M
    - GRADE 350W (COATED)
  - PLATE TO CSA G40.21M
    - GRADE 350W (COATED)
    - GRADE 350A (UNCOATED)

**- STEEL FABRICATION:**

- WELDING:**
- SHOP WELDING IN ACCORDANCE WITH CSA W59 FABRICATOR TO BE CERTIFIED FOR DIVISION 1, 2 OR 3 IN ACCORDANCE WITH CSA W47.1.
  - FIELD WELDING BY COMPANY CERTIFIED TO CSA W47.1, DIVISIONS 1, 2 OR 3.
  - MIN. 6mm FILLET WELD UNLESS OTHERWISE NOTED.
- GUARDRAIL BRACKETS AND POST COATING TO BE EITHER:**
- GALVANIZED TO CSA G164 AS NOTED ON DRAWINGS. MINIMUM 610 g/m<sup>2</sup>; OR
  - PAINTED IN ACCORDANCE WITH MINISTRY STEEL GUARDRAIL COMPONENT PAINT STANDARD:
  - HSS RAIL TO BE PAINTED SAFETY YELLOW IN ACCORDANCE WITH MINISTRY STEEL GUARDRAIL COMPONENT PAINT STANDARD:



NOTE: DELINEATOR ORIENTATION BY OWNER

Rev	Date	DESCRIPTION	Init
1	2014/04/16	ISSUED TO CLIENT	
2	2016/05/10	REDUCED GAP DISTANCE & PLATE SIZE	

SCALE AS SHOWN

Designed J.D.    Date 2014/03/30  
Checked J.H.    Date 2014/03/30  
Drawn W.R.    Date 2014/03/30

**MINISTRY OF FORESTS, LANDS & NATURAL RESOURCE OPERATIONS**  
BRITISH COLUMBIA  
The Best Place on Earth

**STANDARD BRIDGE DRAWING**

**STANDARD HSS GUARDRAIL FOR PRECAST CONCRETE SLAB BRIDGES**  
CL - 3

ORIGINAL SIGNED and SEALED BY: <b>JULIEN HENLEY</b>	APPROVED BY:
DESIGN ENGINEER DATE <b>JULIEN HENLEY</b>	MOF ENGINEER DATE
FILE No.	DRAWING No.

STD-EC-010-06