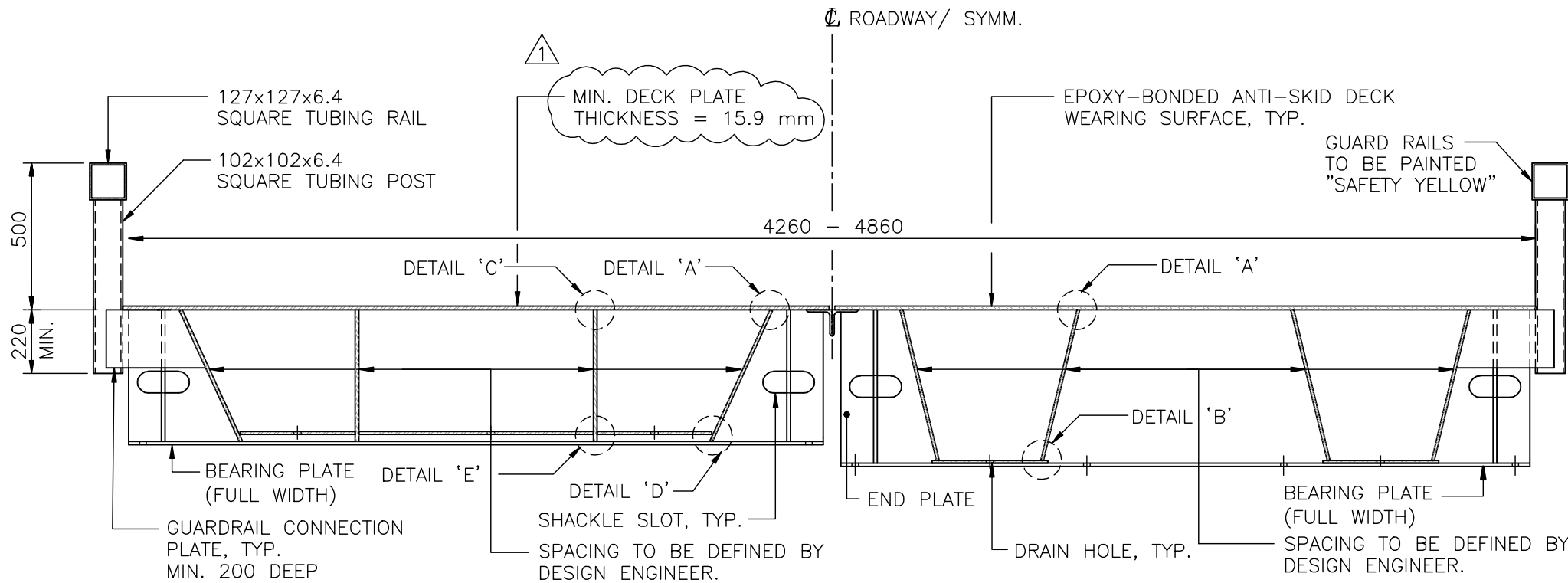
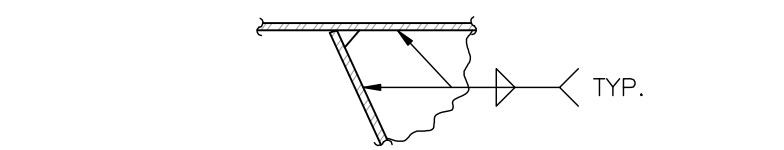
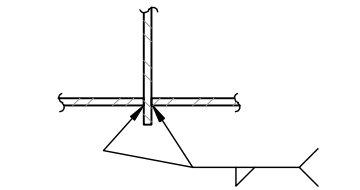
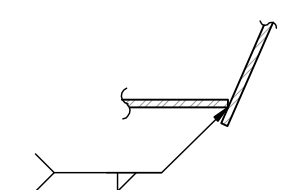
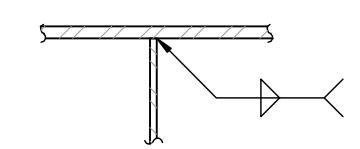
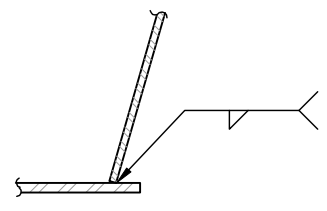
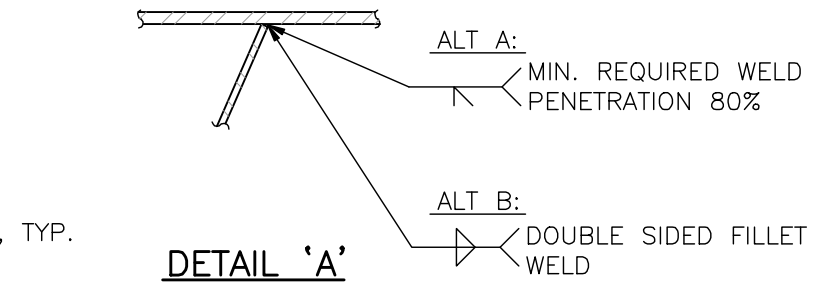


**ELEVATION**



**ALTERNATE #1: TYPICAL SINGLE BOX MODULE**

(MIN. NO. INTERNAL WEB=2)  
(MAX. SPAN=24m)

**ALTERNATE #2: TYPICAL TWIN BOX MODULE**

(MAX. SPAN=20m)

**TYPICAL CROSS SECTION**

(SKID PLATE NOT SHOWN FOR CLARITY)

**Province of British Columbia**  
MINISTRY OF FORESTS AND RANGE  
RESOURCE TENURES and ENGINEERING BRANCH

SCALE AS SHOWN		Designed J.H. Date FEB 2007	Checked D.J.H. Date FEB 2007	Drawn E.F. Date FEB 2007
Rev	Date	DESCRIPTION	Init	
1	08/03/28	DECK PLATE THICKNESS		
REVISIONS				

**STANDARD BRIDGE DRAWING**

**TYPICAL ALL STEEL PORTABLE SUPERSTRUCTURE**  
**CONCEPTUAL GENERAL ARRANGEMENT SHEET 1 OF 2**

ORIGINAL SIGNED and SEALED BY:  
DAVID I. HARVEY, P.ENG.

DESIGN ENGINEER  
DATE: JULIEN HENLEY, P.ENG

APPROVED BY:

MOF ENGINEER  
DATE

FILE No.

DRAWING No.  
**STD-E-090-01**