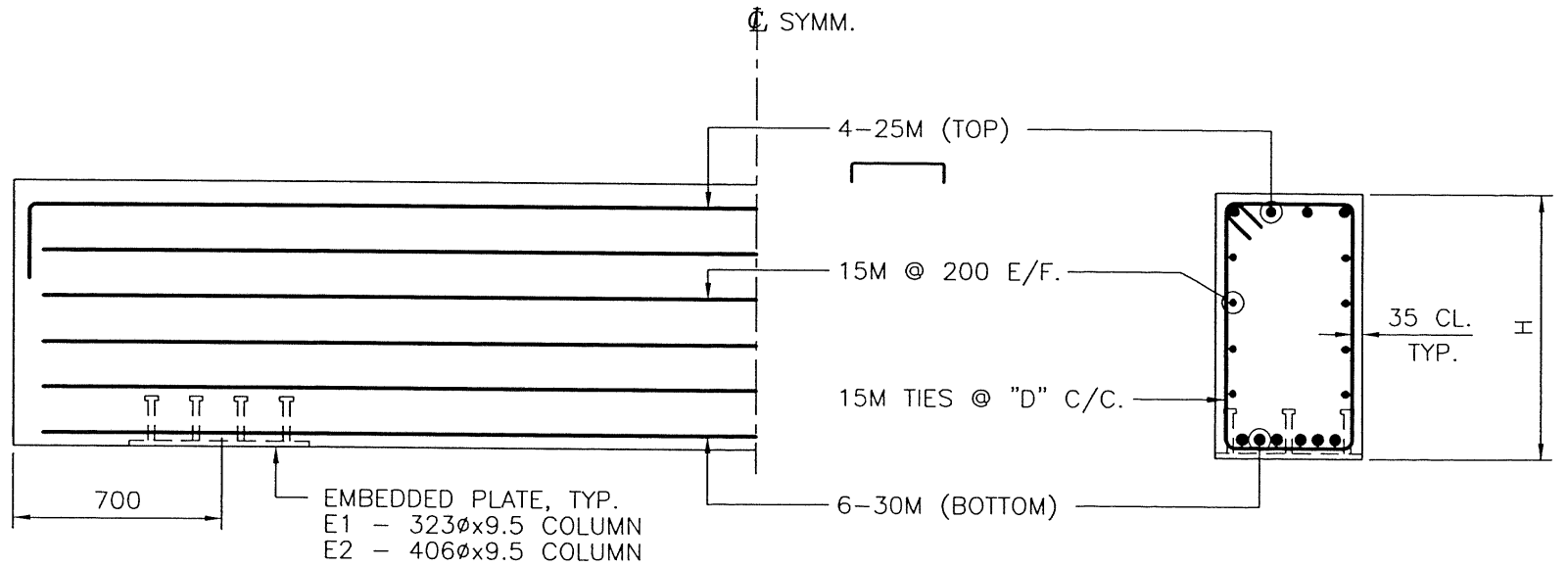


**1/2 CAP BEAM/WINGWALL REINFORCEMENT DETAIL**

1:25

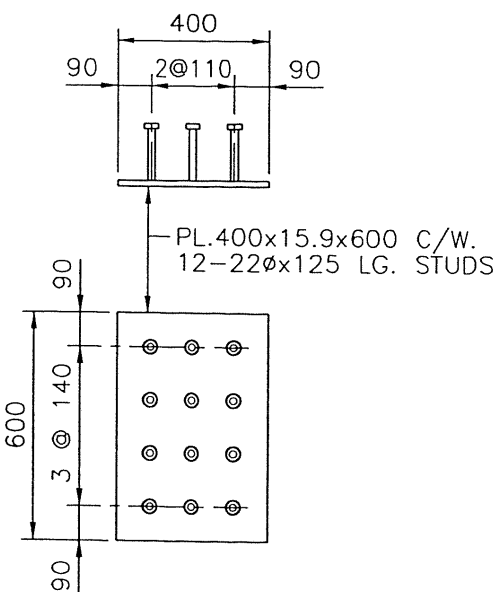
**NOTE:**  
FOR TABLE DEFINING "H" & "D"  
SEE DWG. STD-E-050-52



**1/2 CAP BEAM REINFORCEMENT DETAIL**

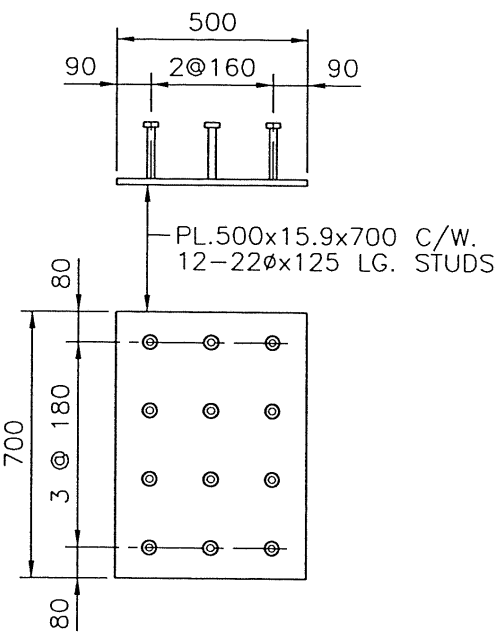
1:25

**ASSUME NOT TO SCALE**



**EMBEDDED PLATE E1 DETAIL**


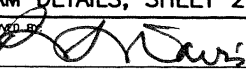
1:20



**EMBEDDED PLATE E2 DETAIL**

1:20

SCALE AS SHOWN		Designed: J.H.	Date: MAR. 2000
		Checked: D.J.H.	Date: MAR. 2000
		Drawn: P.J.	Date: MAR. 2000
Rev	Date	DESCRIPTION	Init
REVISIONS			

 <b>Province of British Columbia</b> MINISTRY OF FORESTS RESOURCE TENURES and ENGINEERING BRANCH	
<b>STANDARD BRIDGE DRAWING</b>	
<b>STANDARD PRECAST CONCRETE BRIDGE ABUTMENTS FOR CONCRETE BRIDGES</b> <b>TYPICAL CONCRETE CAP BEAM DETAILS, SHEET 2</b>	
ORIGINAL SIGNED and SEALED BY: <b>DAVID I. HARVEY, P.ENG.</b>	APPROVED BY: 
DESIGN ENGINEER DATE: <b>JULIEN HENLEY, P.ENG.</b>	MOF ENGINEER DATE:
FILE No.	DRAWING No.
	<b>STD-E-050-51</b>

CANCEL PRINTS BEARING PREVIOUS LETTER