



**Notification Form for a Requested Change to
Investigative Licence # _____**

As part of the requirements of the tenure document, if changes are made to the tenure activities that include placement of improvements (eg. Monitoring equipment) that were not part of the original submission of the investigative plan, it is the tenure holder's responsibility to notify the appropriate Authorizing Agency staff as soon as the information is known by the tenure holder, prior to changing the improvements, to maintain the tenure in good standing.

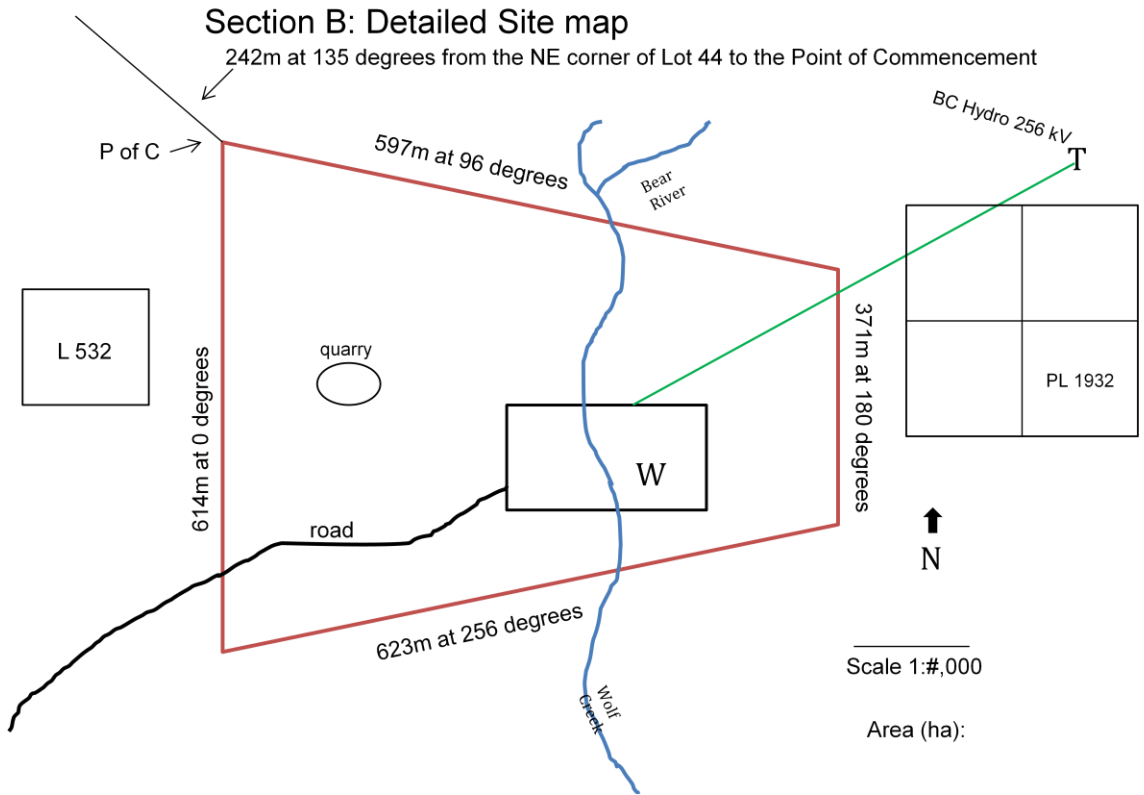
Sample text in **red**. Replace **red text** prior to submission.

Please replace the existing :

Section B – Detailed Site Map and

Section C – Investigative Schedule

Sample: Add notations to clearly indicate new features based on the revised Investigative Schedule or based on details from Investigative Plan instructions.



Section C - Investigative Schedule

Example of table partially filled in. Column headings are fixed.

Original Activity	Brief description of activity	Time Period	Potential Impact	Requested Change
Surveys	Cutting lines will be required (typically 1-2m wide by 50 – 200 m long.	Summers of 2011 and 2012	Vegetation removal is required for sight lines.	Change to time period to Summer 2012, and 2013
Geotechnical work	Drilling. Each drill hole will include a 5x5m wooden platform plus and addition area of cleared vegetation surrounding the platform. Bore holes will be a maximum of 45m deep and 6-8 cm in diameter.	Fall 2012	Drill pads will be constructed from wood flown in from outside the project area. To avoid damage to the environment, an oil spill kit will be in place at each drill pad. All bore holes will be capped once drilling is complete. Overall there will be approximately 7x7m of vegetation clearance per drill hole.	
New Activities				
Met tower placement	Meteorological towers of xx height, supported by wire anchors	Installation for A and B in Sept 2012, for C and D in March 2013. Monitoring and maintenance ongoing for life of Investigative License	Concrete anchors sunk into ground at xx depth.	Met towers to be placed at locations indicated on map at locations A, B, C and D.
Met tower maintenance	Site visit	Ongoing for life of IL: weather,	No additional impact anticipated	

for A, B, C, D		safety, permits and guidelines permitting		
----------------	--	--	--	--