










Forests, Lands, Natural Resource Operations and Rural Development

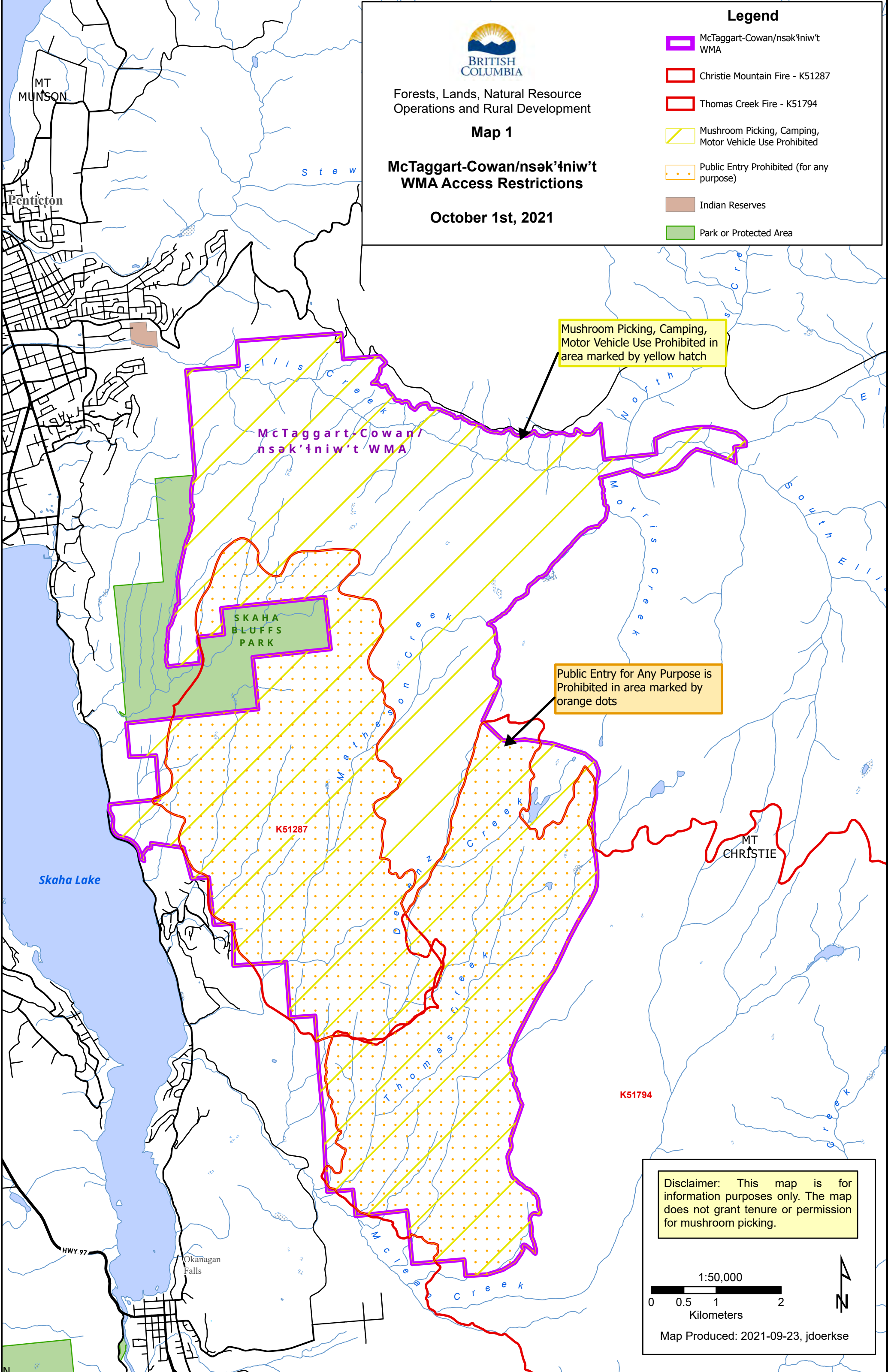
Map 1

McTaggart-Cowan/nsək'łniw't WMA Access Restrictions

October 1st, 2021

Legend

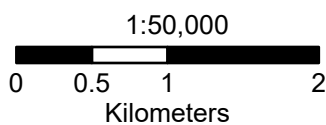
-  McTaggart-Cowan/nsək'łniw't WMA
-  Christie Mountain Fire - K51287
-  Thomas Creek Fire - K51794
-  Mushroom Picking, Camping, Motor Vehicle Use Prohibited
-  Public Entry Prohibited (for any purpose)
-  Indian Reserves
-  Park or Protected Area



Mushroom Picking, Camping, Motor Vehicle Use Prohibited in area marked by yellow hatch

Public Entry for Any Purpose is Prohibited in area marked by orange dots

Disclaimer: This map is for information purposes only. The map does not grant tenure or permission for mushroom picking.



Map Produced: 2021-09-23, jdoerkse