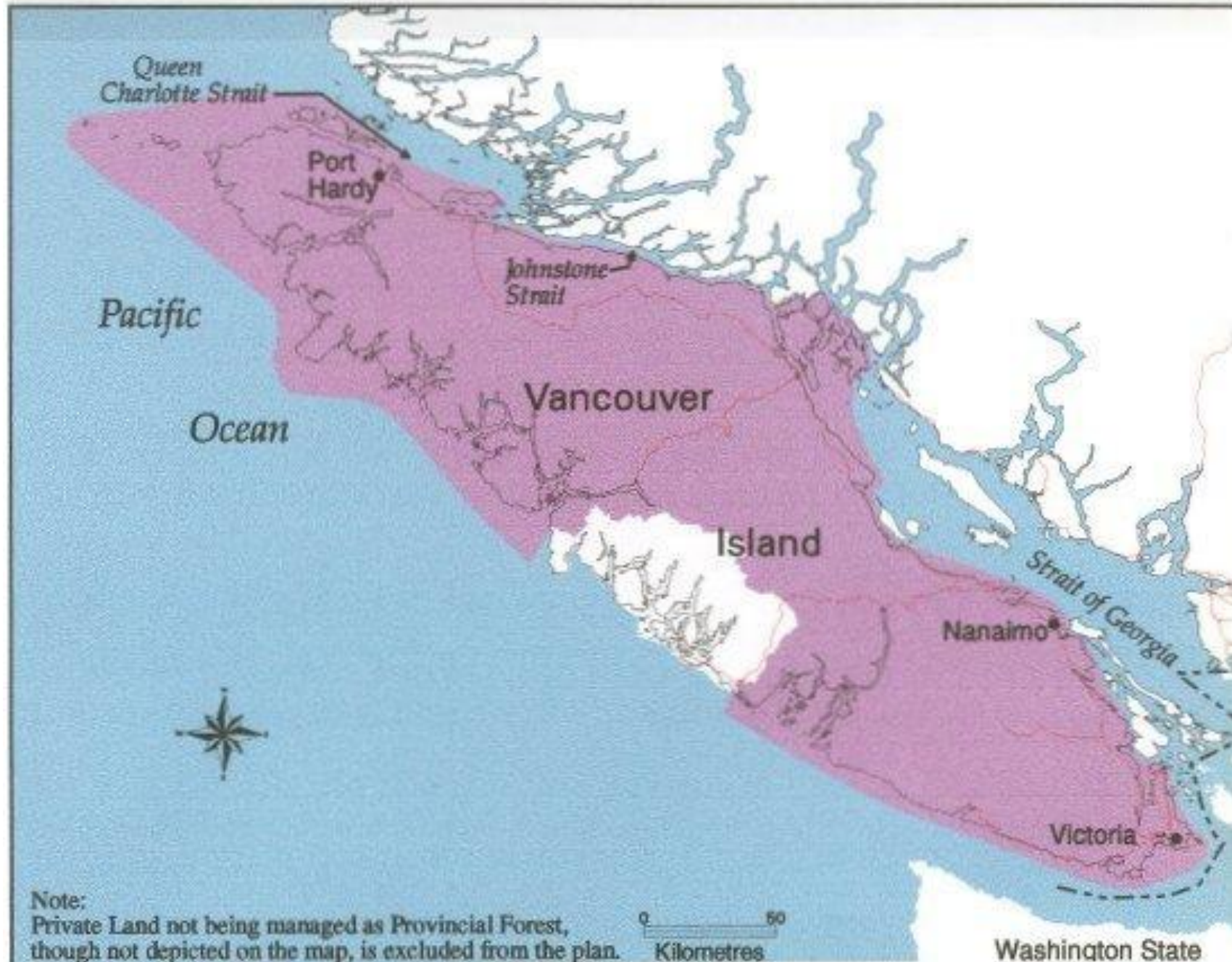


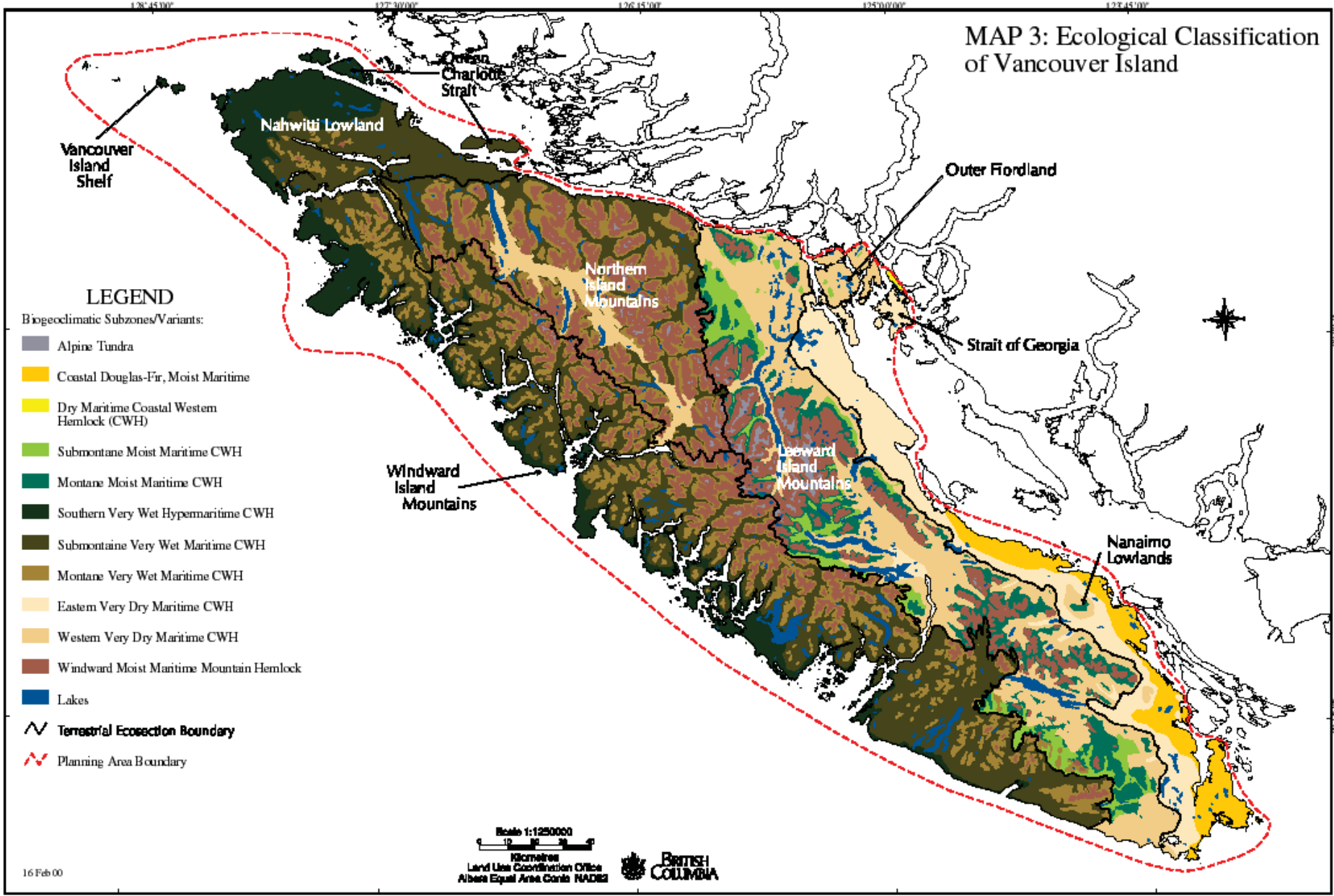
MAP 1: Vancouver Island Location Map



MAP 2: Vancouver Island Land Use Plan Area



MAP 3: Ecological Classification of Vancouver Island



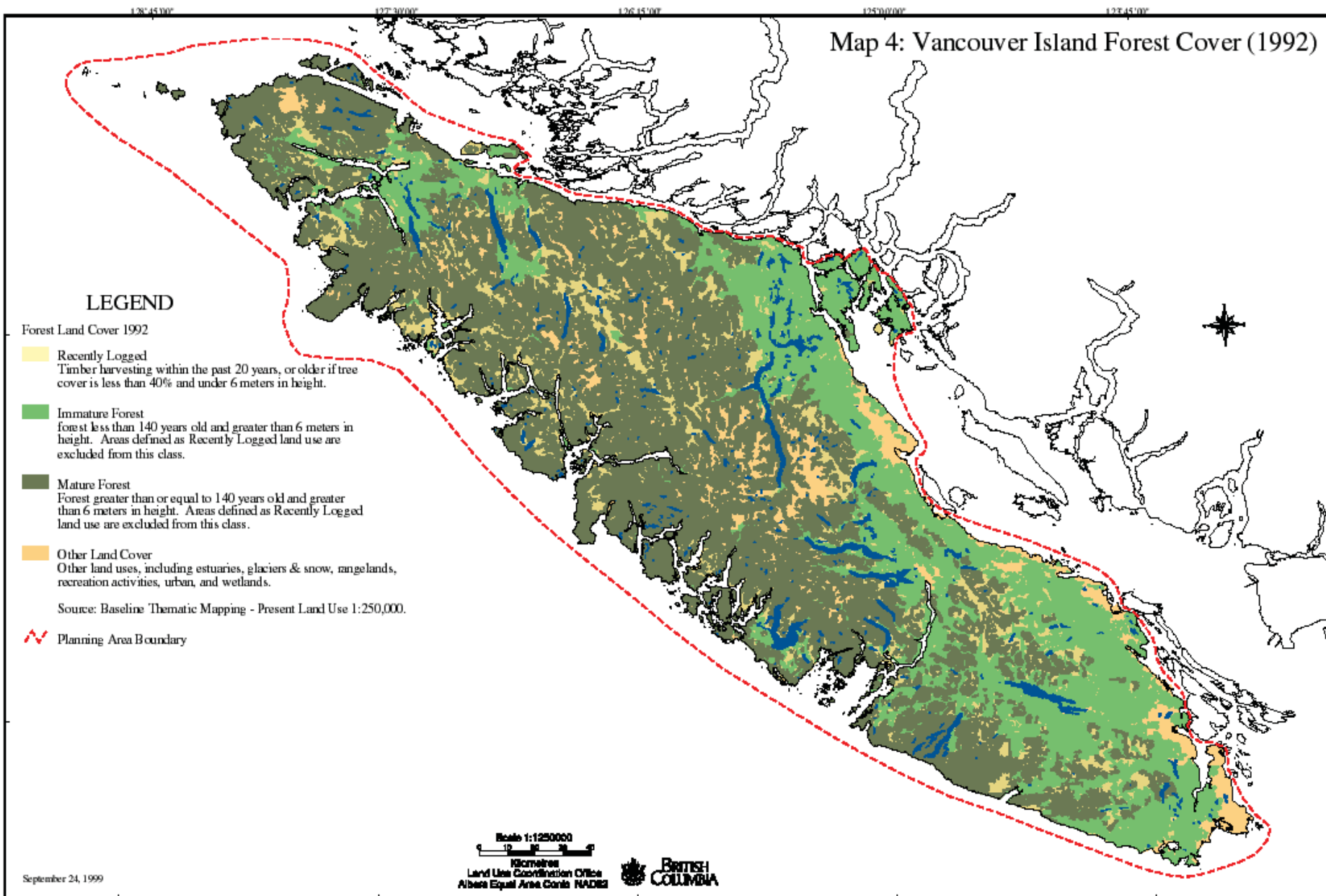
LEGEND

- Biogeoclimatic Subzones/Variants:
- Alpine Tundra
 - Coastal Douglas-Fir, Moist Maritime
 - Dry Maritime Coastal Western Hemlock (CWH)
 - Submontane Moist Maritime CWH
 - Montane Moist Maritime CWH
 - Southern Very Wet Hypemmaritime CWH
 - Submontane Very Wet Maritime CWH
 - Montane Very Wet Maritime CWH
 - Eastern Very Dry Maritime CWH
 - Western Very Dry Maritime CWH
 - Windward Moist Maritime Mountain Hemlock
 - Lakes
 - Terrestrial Ecosystem Boundary
 - Planning Area Boundary

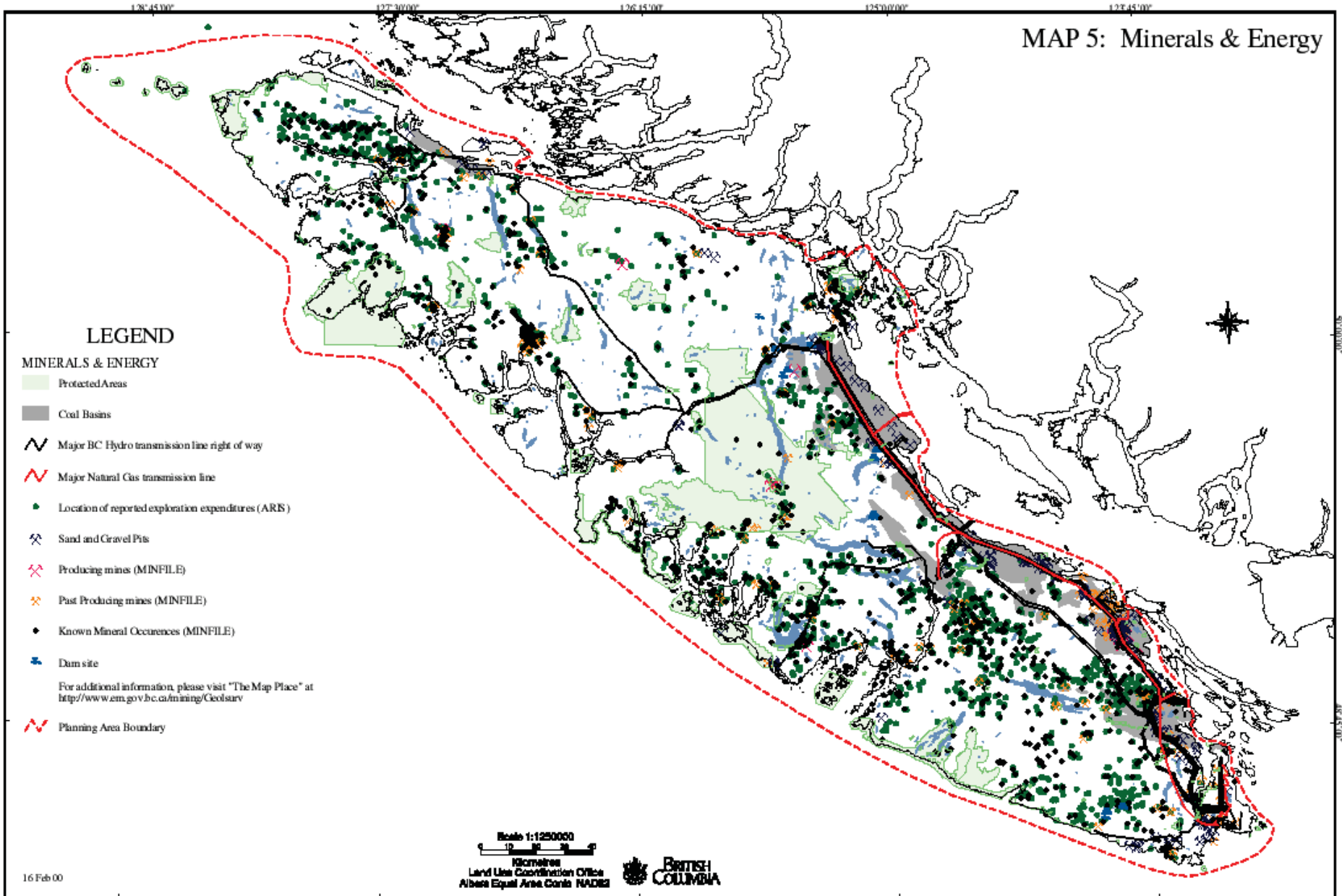
Scale 1:125000
 0 10 20 30
 Kilometres
 Land Use Coordination Office
 Alberta Equal Area Contour MAP82



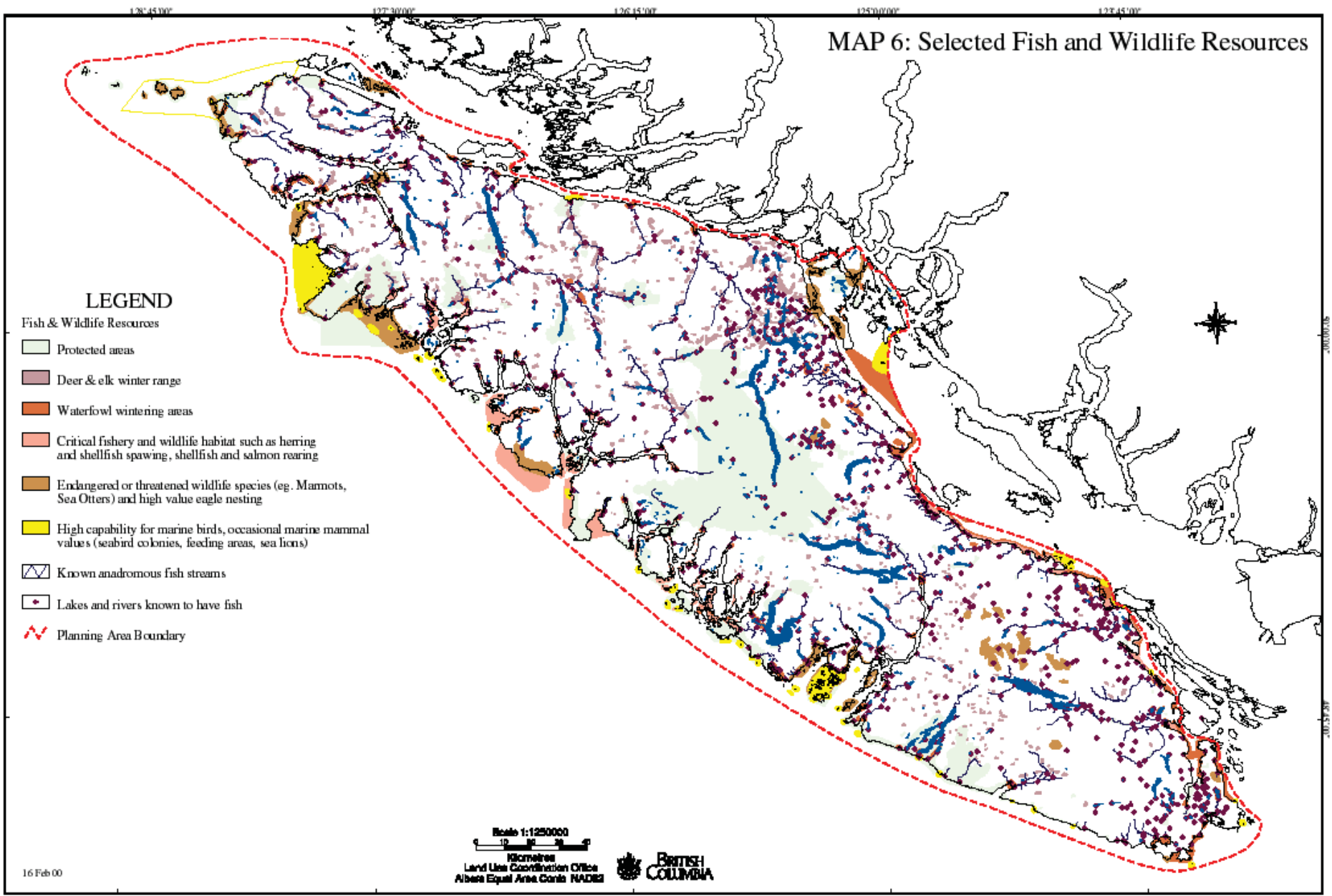
Map 4: Vancouver Island Forest Cover (1992)



MAP 5: Minerals & Energy



MAP 6: Selected Fish and Wildlife Resources



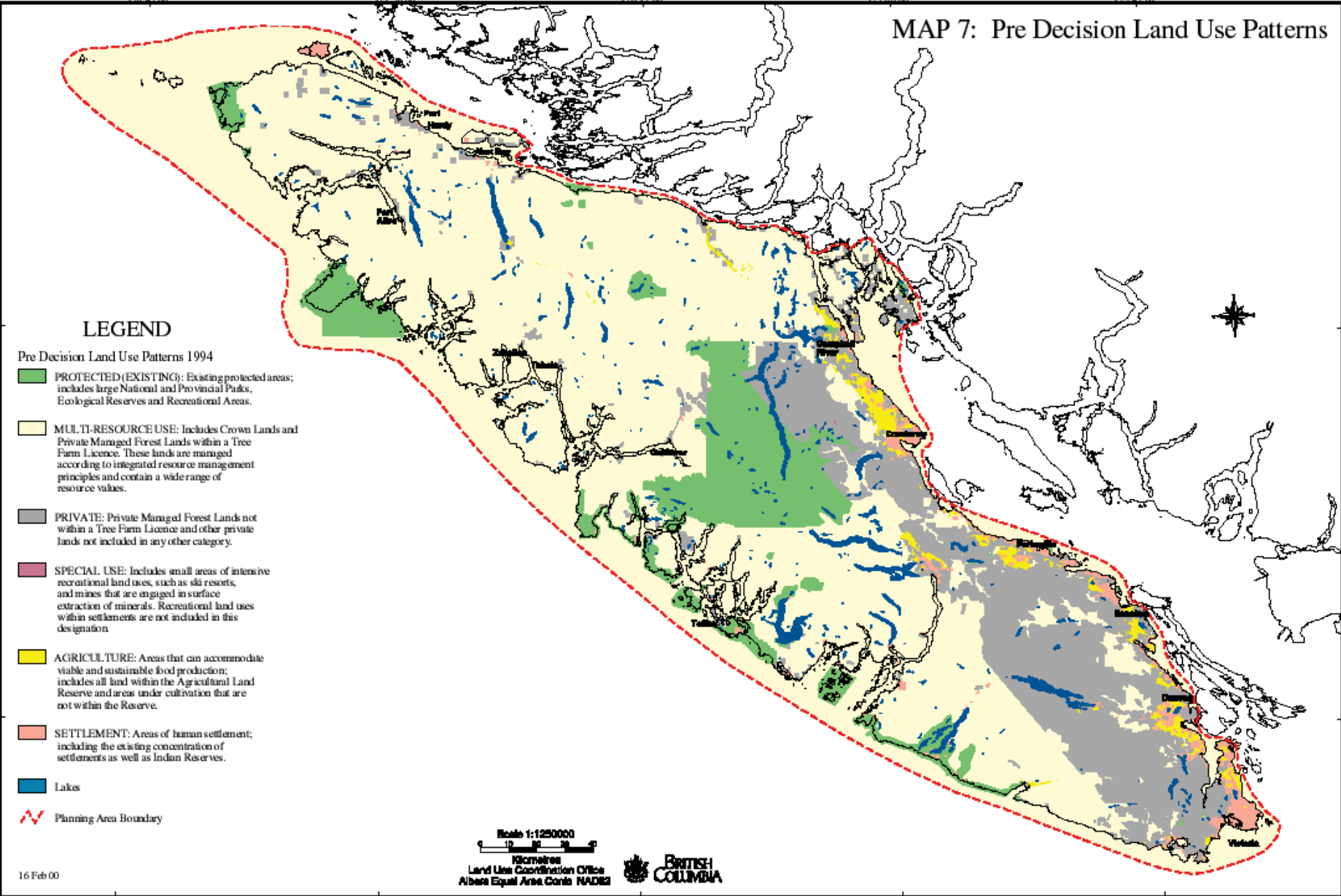
LEGEND

- Fish & Wildlife Resources
- Protected areas
- Deer & elk winter range
- Waterfowl wintering areas
- Critical fishery and wildlife habitat such as herring and shellfish spawning, shellfish and salmon rearing
- Endangered or threatened wildlife species (eg. Mamots, Sea Otters) and high value eagle nesting
- High capability for marine birds, occasional marine mammal values (seabird colonies, feeding areas, sea lions)
- Known anadromous fish streams
- Lakes and rivers known to have fish
- Planning Area Boundary

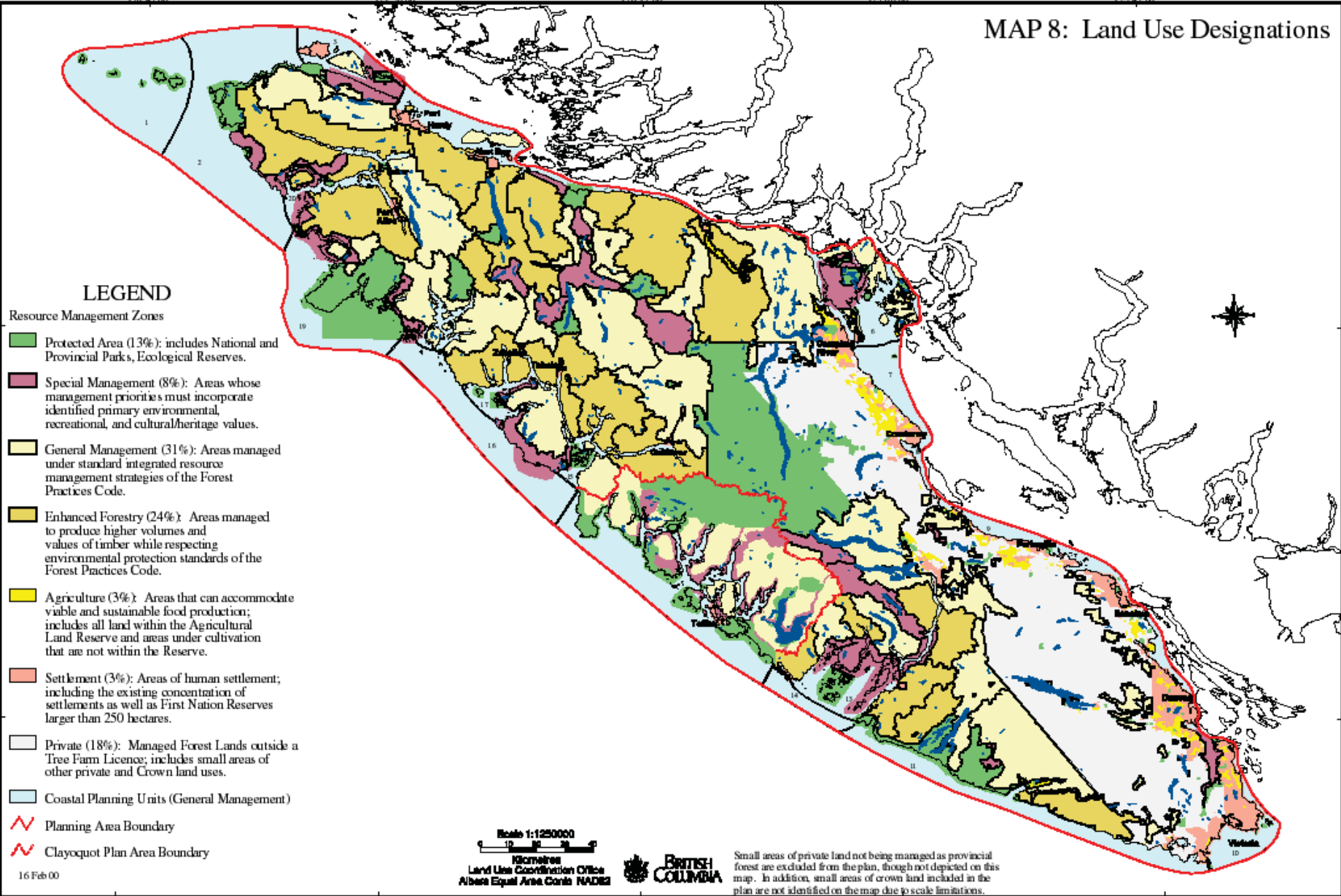
Scale 1:1250000
0 10 20 30
Kilometres
Land Use Coordination Office
Alberta Equal Area Conts. NAD83



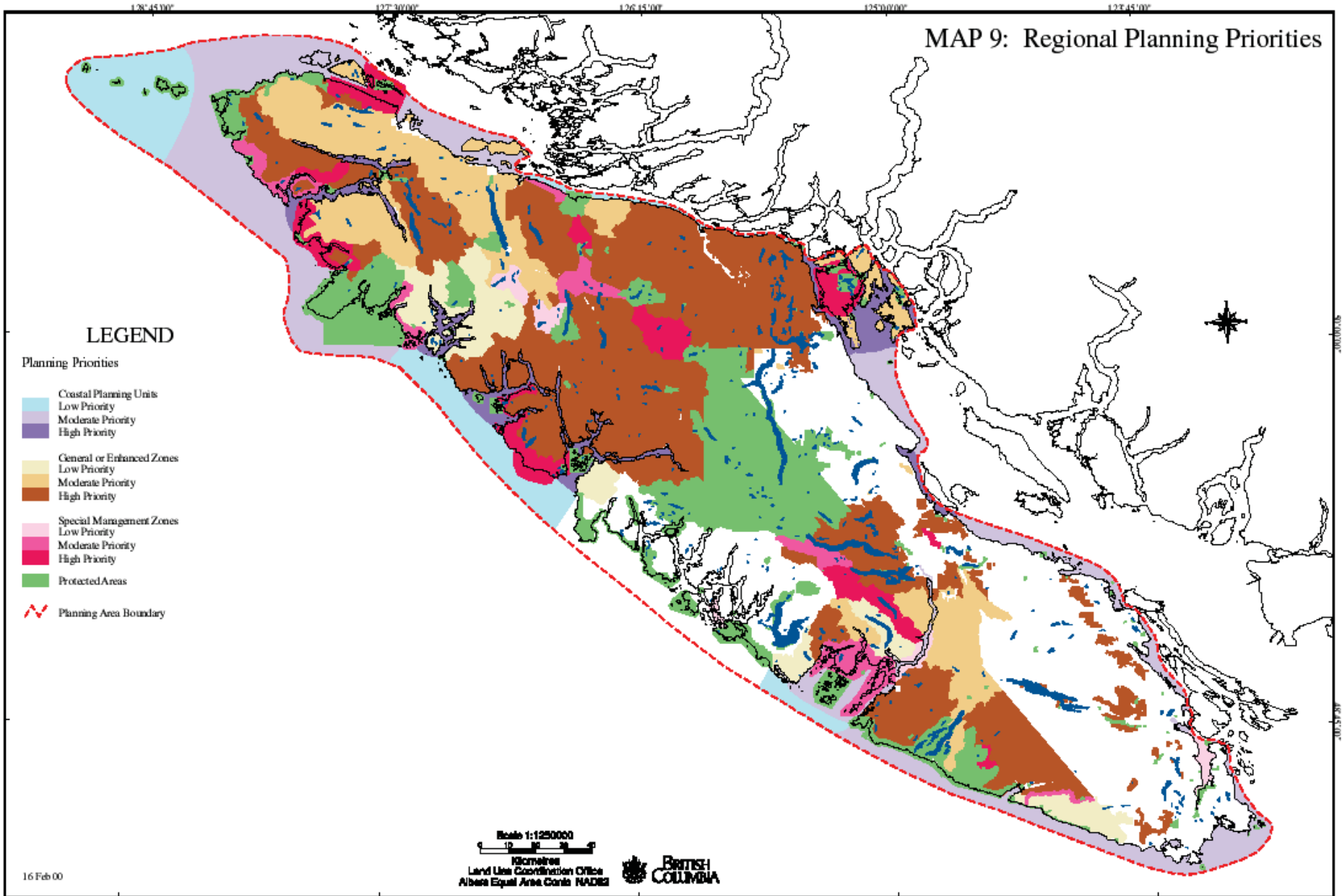
MAP 7: Pre Decision Land Use Patterns



MAP 8: Land Use Designations



MAP 9: Regional Planning Priorities



MAP 10: Special Management Zones with Primary Visual Resource Values

