

128°45'00"

127°30'00"



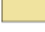

126°15'00"

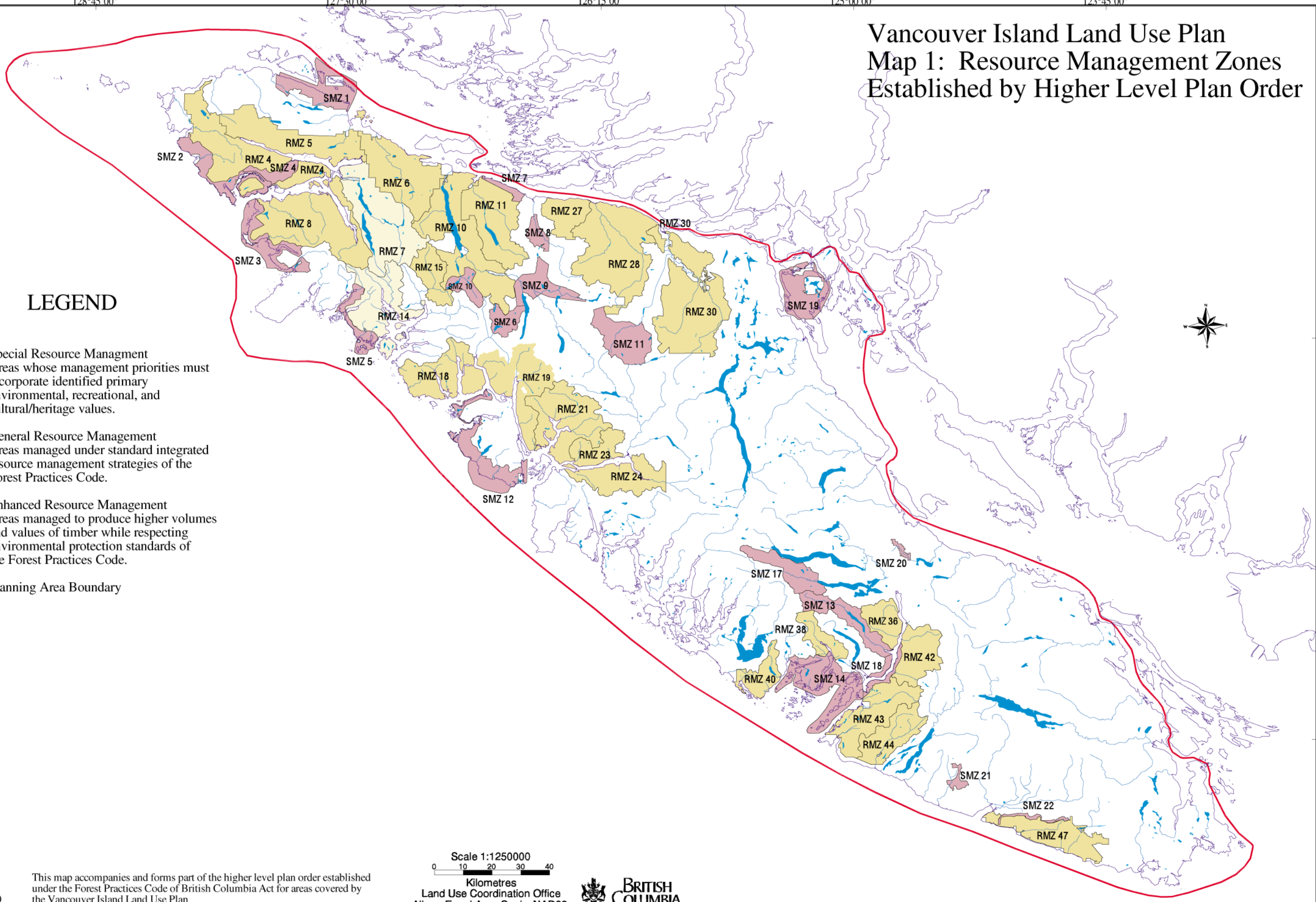
125°00'00"

123°45'00"

# Vancouver Island Land Use Plan Map 1: Resource Management Zones Established by Higher Level Plan Order

## LEGEND

-  Special Resource Management Areas whose management priorities must incorporate identified primary environmental, recreational, and cultural/heritage values.
-  General Resource Management Areas managed under standard integrated resource management strategies of the Forest Practices Code.
-  Enhanced Resource Management Areas managed to produce higher volumes and values of timber while respecting environmental protection standards of the Forest Practices Code.
-  Planning Area Boundary



Scale 1:1250000  
 0 10 20 30 40  
 Kilometres  
 Land Use Coordination Office  
 Albers Equal Area Conic NAD83

