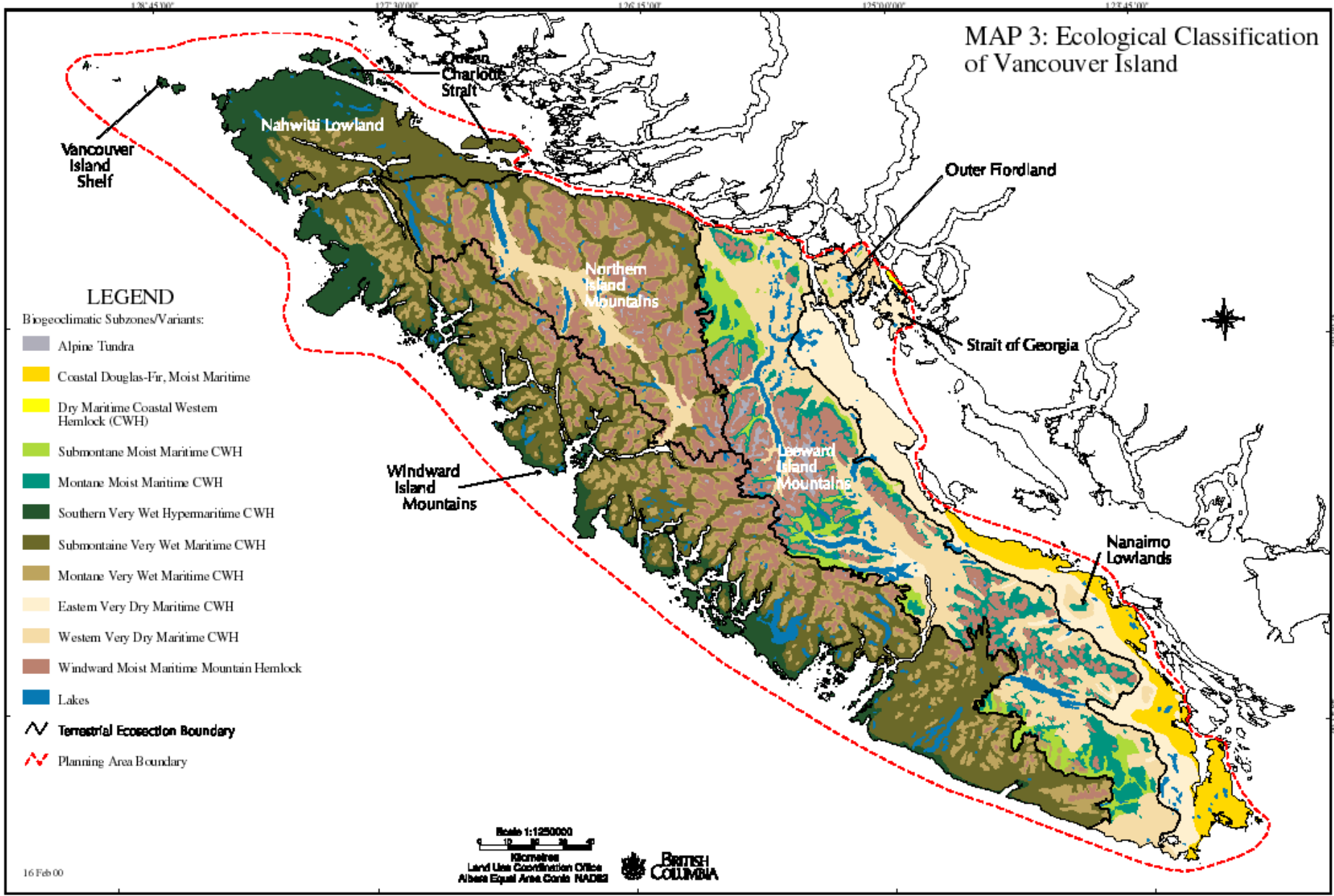


MAP 3: Ecological Classification of Vancouver Island



LEGEND

- Biogeoclimatic Subzones/Variants:
- Alpine Tundra
 - Coastal Douglas-Fir, Moist Maritime
 - Dry Maritime Coastal Western Hemlock (CWH)
 - Submontane Moist Maritime CWH
 - Montane Moist Maritime CWH
 - Southern Very Wet Hypemaritime CWH
 - Submontane Very Wet Maritime CWH
 - Montane Very Wet Maritime CWH
 - Eastern Very Dry Maritime CWH
 - Western Very Dry Maritime CWH
 - Windward Moist Maritime Mountain Hemlock
 - Lakes
 - Terrestrial Ecoregion Boundary
 - Planning Area Boundary

Scale 1:125000
 0 10 20 30
 Kilometres
 Land Use Coordination Office
 Alberta Equal Area Conic NAD83

